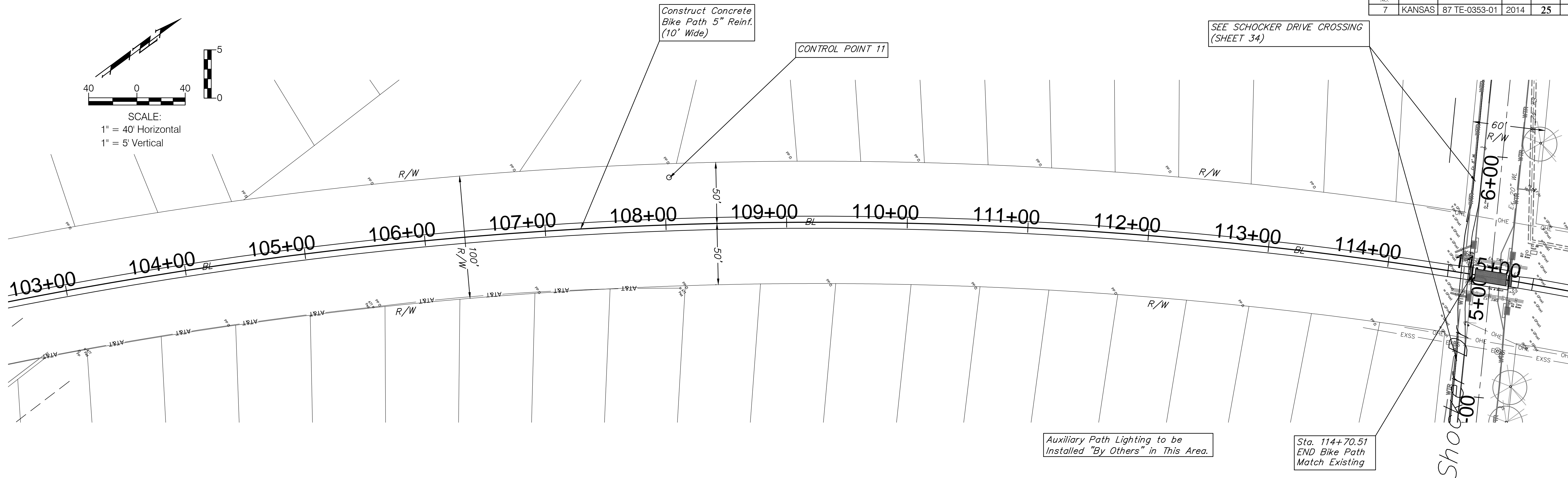
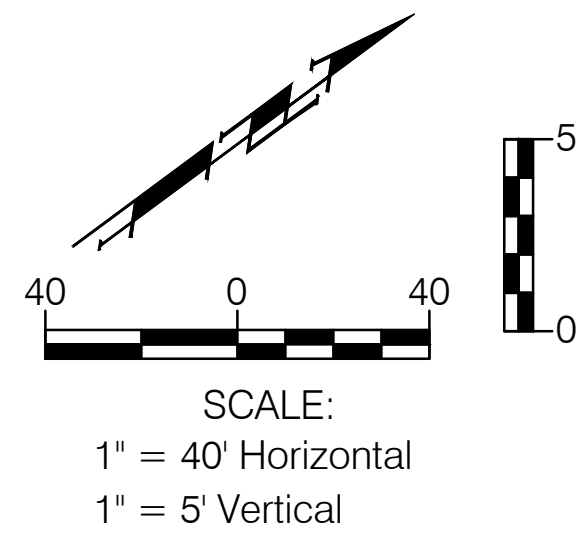


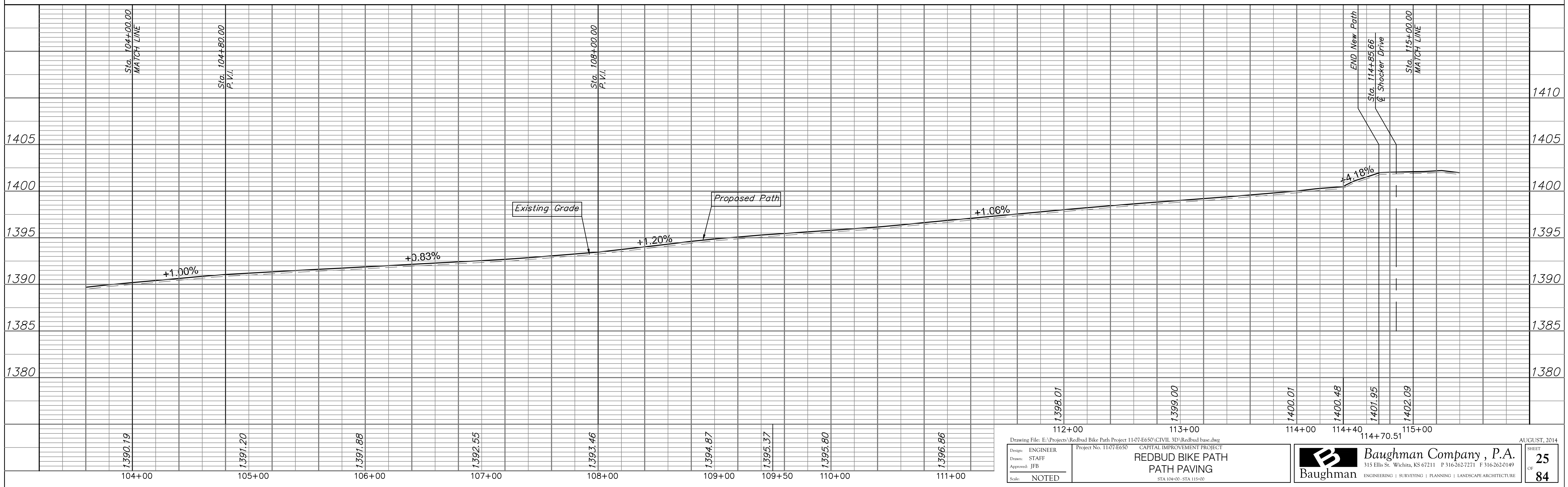
| FHWA REGION NO. | STATE | PROJECT NO. | FISCAL YEAR | SHEET NO. | TOTAL SHEETS |
|-----------------|--------|---------------|-------------|-----------|--------------|
| 7 | KANSAS | 87 TE-0353-01 | 2014 | 25 | 84 |



Sta. 114+70.51
END Bike Path
Match Existing

Auxiliary Path Lighting to be
Installed "By Others" in This Area.

Shocker Drive



Drawing File: E:\Projects\Redbud Bike Path Project 11-07-E650\CIVIL 3D\Redbud base.dwg
 Project No. 11-07-E650
 CAPITAL IMPROVEMENT PROJECT
**REDBUD BIKE PATH
 PATH PAVING**
 STA 104+00-STA 115+00

Baughman Company, P.A.
 315 Ellis St. Wichita, KS 67211 P 316-262-7271 F 316-262-0149
 ENGINEERING | SURVEYING | PLANNING | LANDSCAPE ARCHITECTURE