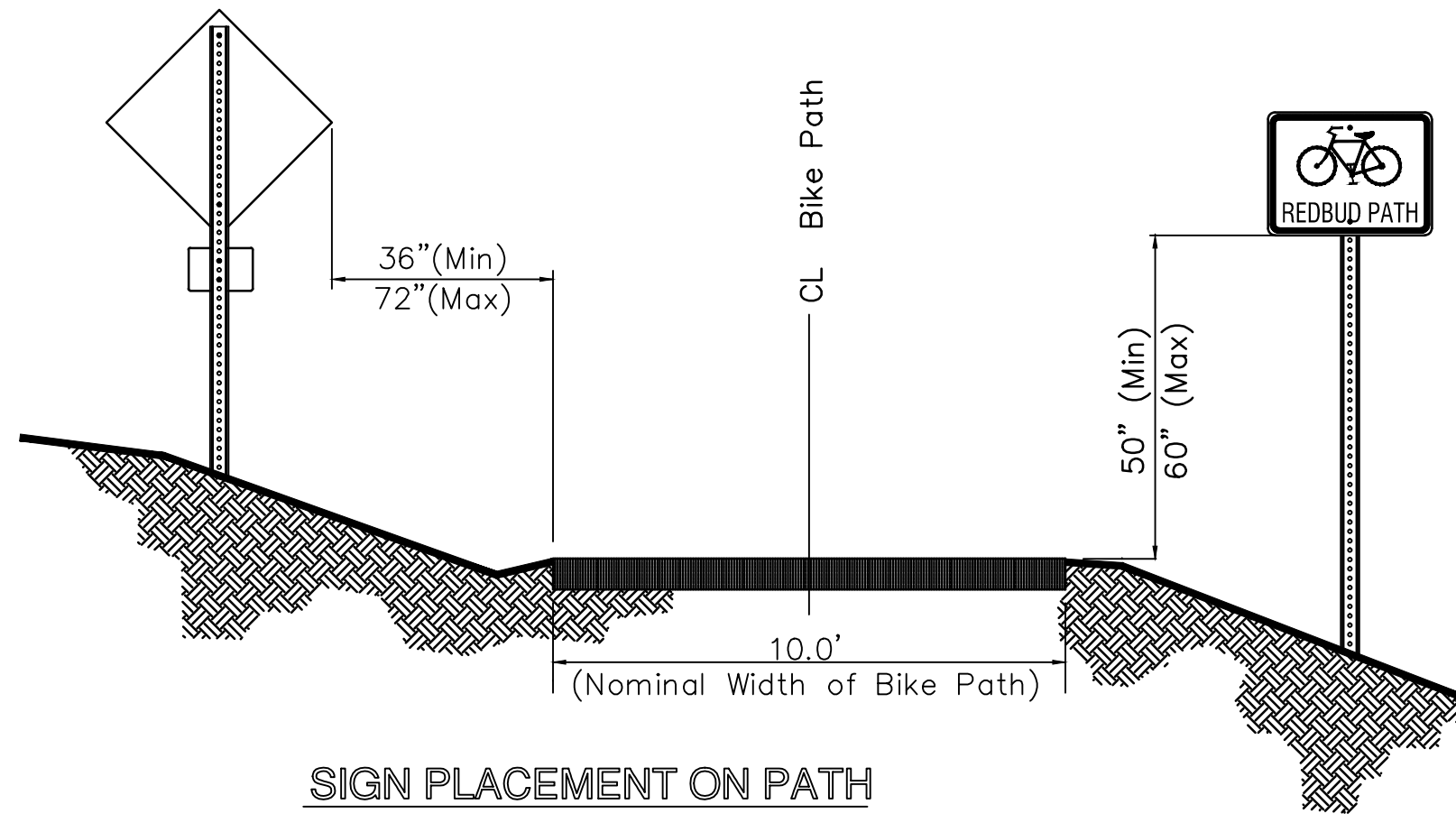


TYPICAL SIGN MOUNTING

(See Mounting Installation this Sheet for Details)



SIGN PLACEMENT ON PATH

MULTI-USE PATHS

Multi-Use paths should be signed with appropriate regulatory, warning and destination signs.

a. Regulatory Signs

Regulatory signs inform users of traffic laws or regulations. They are erected at the point where regulations apply. Common regulatory signs are:

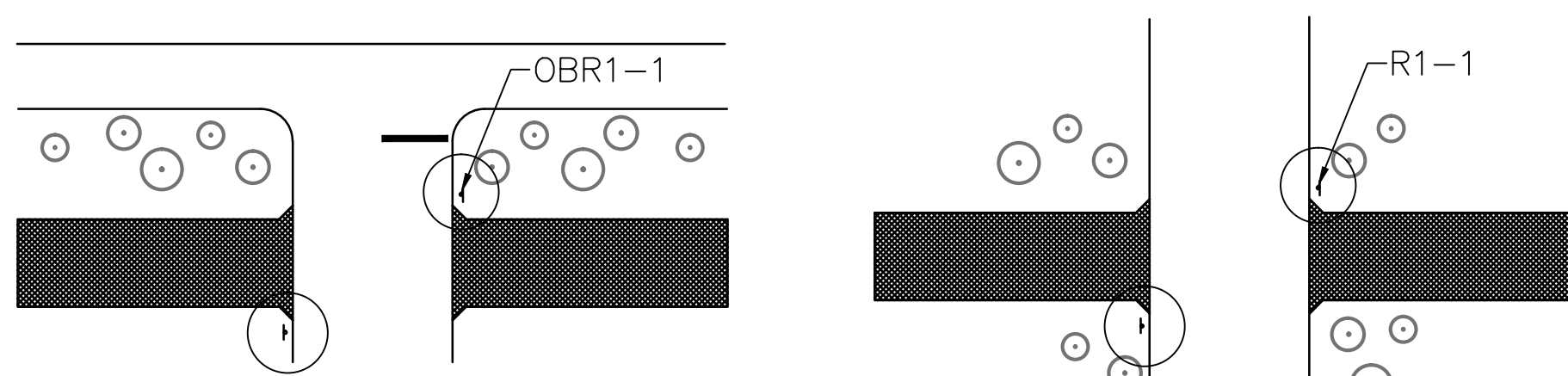


R1-1
18" X 18"



OBR1-1
24" X 24"

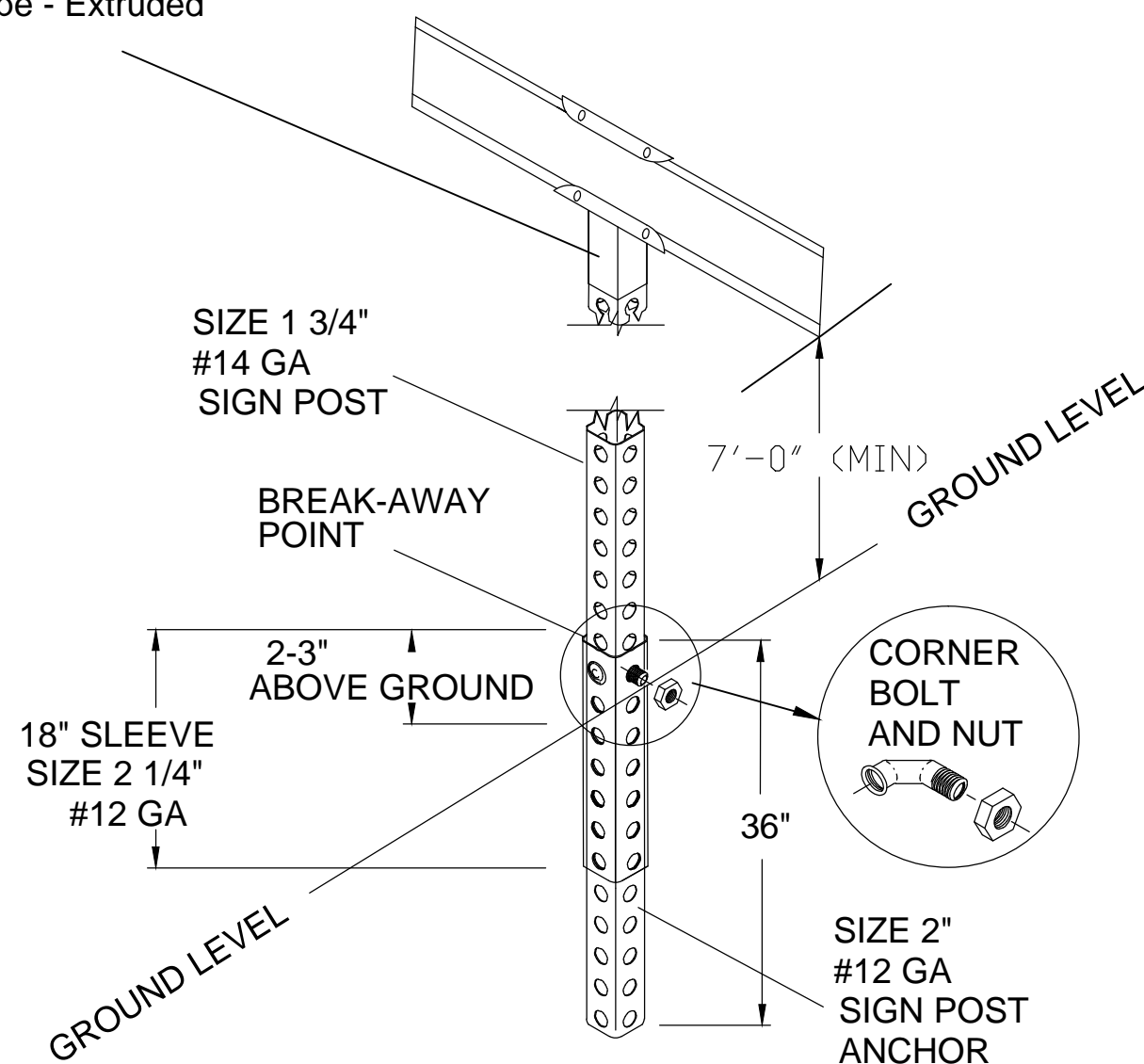
Note: Sign R1-1 is a reduced version of a standard motor vehicle sign. It should be used where it will be visible only to bicyclists, for example, where a path crosses another path or where a path intersects a roadway at right angles. Sign OBR1-1 should be used where the sign will be visible to motor vehicle traffic, for example, where a path is parallel and close to a roadway.



Appropriate use of sign OBR1-1

Appropriate use of sign R1-1

1 3/4" Square Post Cap
(includes 6 ea. 5/16" set screws)
Blade Holder Length - 5 1/2"
Blade Type - Extruded



TYPICAL STREET NAME and SIGN MOUNTING INSTALLATION

SIGN ASSEMBLY QUANTITIES
Note : Table is for Information Only. Items Shall be Paid as Lump Sum "Project Signage."

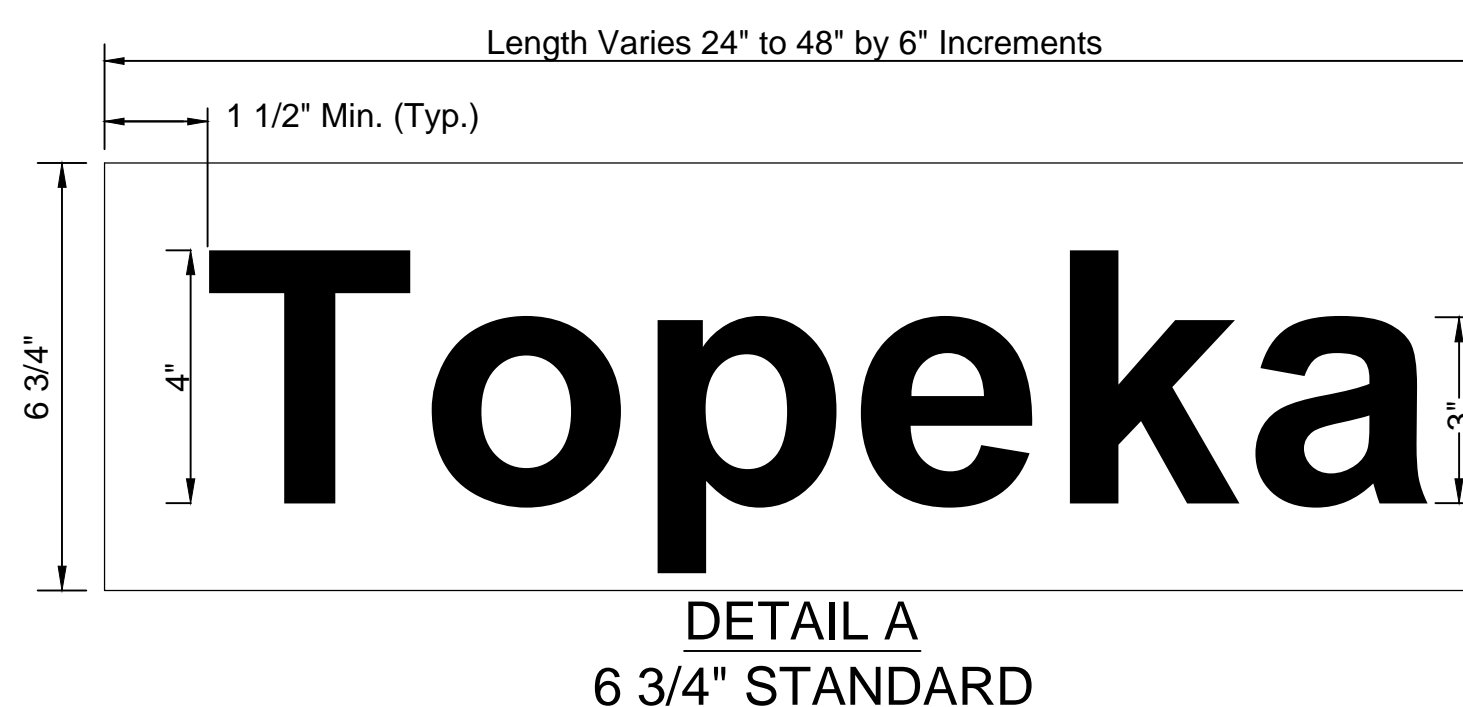
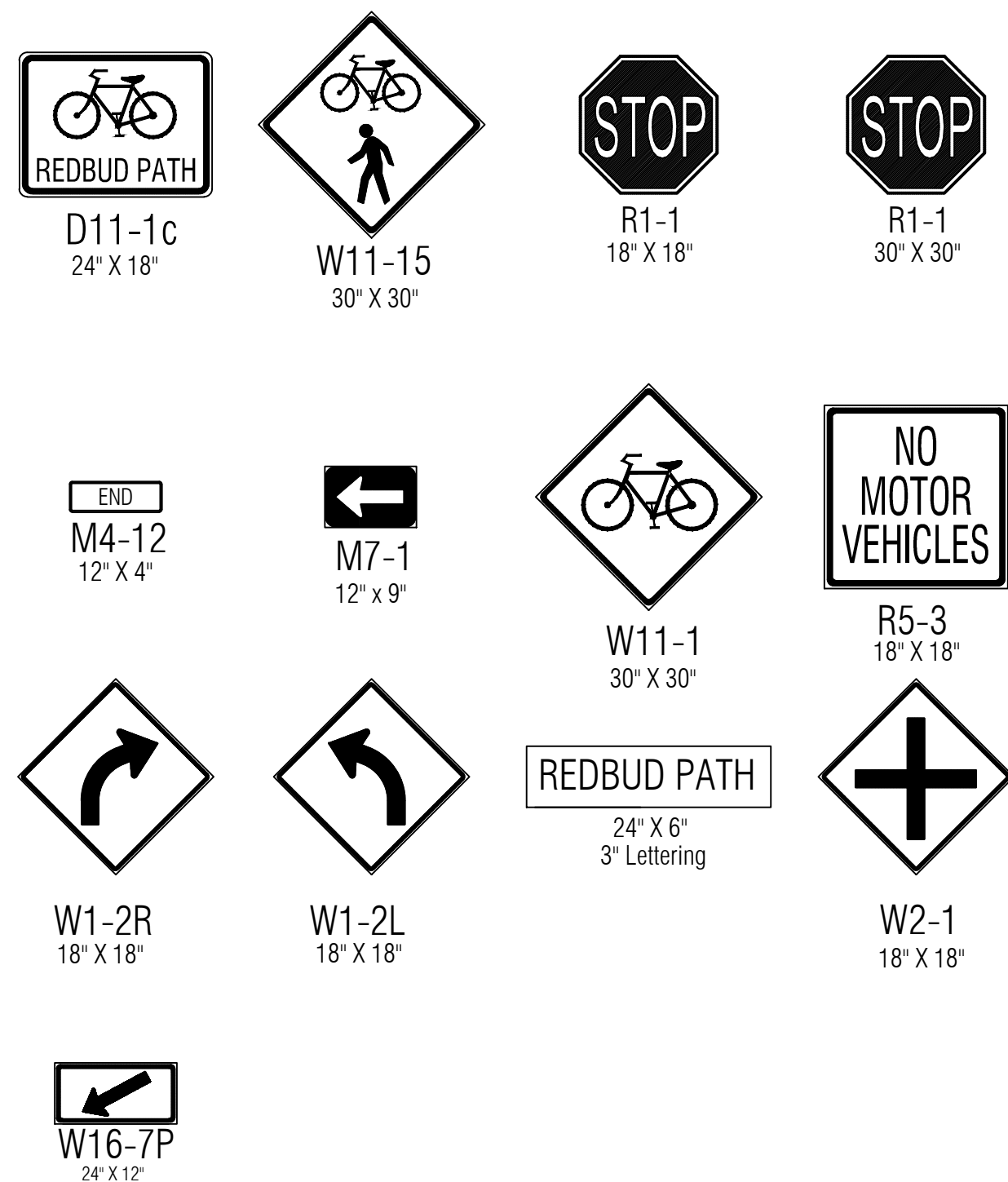
LOCATION	SIGN	QUANTITY
See Signing Sheets for Installation	W11-15	23
" "	W11-1	2
" "	W2-1	2
" "	W1-2R	1
" "	W1-2L	3
" "	W16-7P	10
" "	R1-1 (18"X18")	11
" "	R1-1 (30"X30")	1
" "	R3-17a	10
" "	R5-3	15
" "	M4-12	1
" "	M7-1	4
" "	D11-1c	4
" "	"REDBUD PATH"	10

STREET NAME	BLADES REQ'D 6 3/4" STD.
Hydraulic	1
Piatt	2
Ash	2
Grove	2
Green	2
Shocker Drive	2

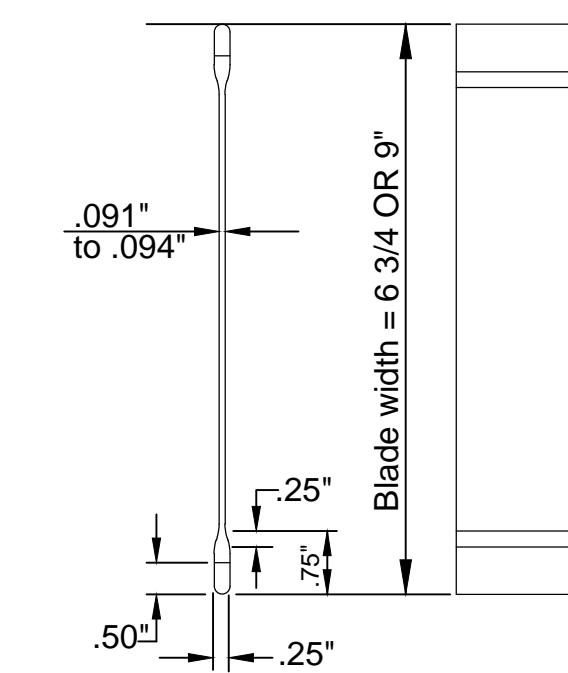
SIGNING NOTES

NOTE: References below to "standard specifications" denote "standard specifications for state road and bridge construction, edition 1990" by the Kansas Department of Transportation.

- Post Anchors. Posts shall be anchored with a yielding base post support as detailed.
- Posts for traffic control signs. Posts shall conform to the requirements of subsection 1620 of the standard specifications except that all posts shall weigh 3 lbs./foot minimum.
- Sign blanks for traffic control signs. Sign blanks shall be fabricated from 0.080" aluminum alloy 6063-T6 conforming to the requirements of subsection 1626 of the standard specifications.
- Fasteners. All steel fasteners for traffic control signs shall be galvanized and shall conform to the requirements of subsection 1614 of the standard specifications.
- Reflective sheeting. Reflective sheeting shall be type II - High performance class HA in accordance with subsection 2201 of the standard specifications.
- Process ink. All process ink shall conform to the requirements of subsection 2202 of the standard specifications.
- Details. Regulatory and warning signs shall conform to the details in "Standard Highway Signs", FHWA 1979.
- New traffic control and street name signs. New traffic control and street name signs shall be measured and paid for at the lump sum price for signing. The payment as set forth above shall be considered full compensation for all excavation, backfilling, posts, anchors, fasteners, materials, labor, tools, and incidentals necessary to complete this work.
- Details - SNS. The reflective sheeting for the 7" standard size SNS is to be the highway green reverse screened background with silver-white #2 copy with 4" uppercase and 3" lower case primary copy and suffix copy. Both series "C". Where suffix letters are used on numbered streets such as RD, TH, etc., they shall be 1.5" lower case series "C" letters. Faces to trim to a 6.3" (See detail A).
The reflective sheeting for the 9" metro size SNS is to be the highway green reverse screened background with silver-white #2 copy with 5" upper case and 3.7" lower case primary copy and suffix copy, both series "C". Where suffix letters are used on numbered streets, such as RD, TH, etc., they shall be 3" lower case series "C". The cardinal direction centered directly below the block number shall be an upper case, 3" series "C" letter. Faces to trim to an 8.5" width (See detail B).
- Shop drawings of layout for SNS shall be submitted to the Traffic of Engineering Division of the City of Newton for approval prior to fabrication. The finished signs as supplied shall be of good appearance, free from ragged edges, cracks, scales or blisters, and shall be clean cut. Signs shall be packed in such a manner as to prevent damage or defacement during shipment or storage.
- New traffic control and street name signs. New traffic control and street name signs shall be measured and paid for at the lump sum price for signing. The payment as set forth above shall be considered full compensation for all excavation, backfilling, posts, anchors, fasteners, materials, labor, tools, and incidentals necessary to complete this work.
- Final sign placement and locations to be coordinated with City of Newton Traffic Engineering Department.



DETAIL A
6 3/4" STANDARD



STREET NAME SIGN
BLADE DETAILS

Drawing File: E:\Projects\Redbud Bike Path\Details\Sign Details.dwg

Design: KK
Drawn: JM
Approved: JFB
Scale: NOTED

Project No. 11-07-E650

CAPITAL IMPROVEMENT PROJECT
REDBUD BIKE PATH
SIGNAGE DETAILS

Baughman Company, P.A.
315 Ellis St. Wichita, KS 67211 P 316-262-7271 F 316-262-0149
ENGINEERING | SURVEYING | PLANNING | LANDSCAPE ARCHITECTURE