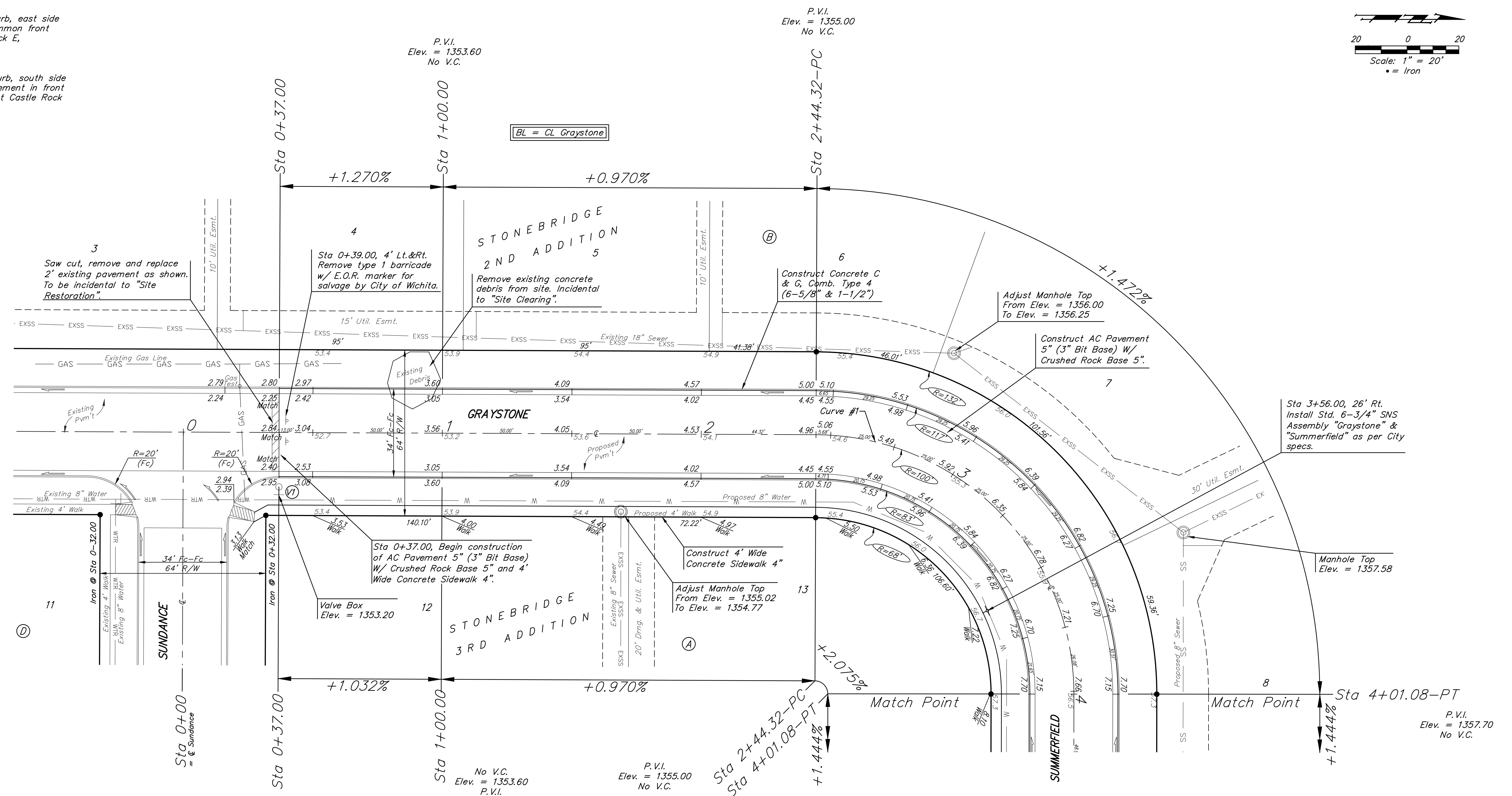
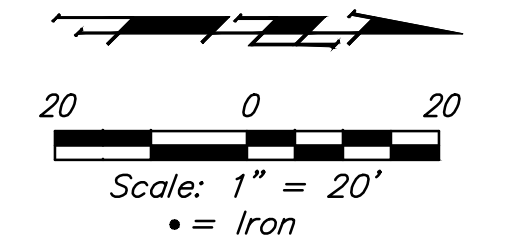


BENCHMARK:

BM #1: "□" Cut on top of curb, east side of Ridgehurst, adjacent to common front lot corner of Lots 6 & 7, Block E, Stonebridge 2nd Addition.
ELEV. = 1348.51 NGVD29

BM #2: "□" Cut on top of curb, south side of Sundance, near end of pavement in front of Lot 6, Block 3, Savannah at Castle Rock Ranch 7th Addition.
ELEV. = 1347.33 NGVD29



Curve #1
Curve Data Based on Centerline

Rad. = 100' Delta = 89°49'03" Tangent = 99.68'
Arc = 156.76' L.C. = 141.20' Def./Ft. = 17.18886 Min.

Station	Arc	Face Chord Lengths		Defl.	Total Defl.
		8' Left	8' Right		
2+44.32	-	-	-	0°00'00"	0°00'00"
2+50.00	5.68'	7.10'	4.26'	1°37'38"	1°37'38"
2+75.00	25.00'	31.17'	18.70'	7°09'43"	8°47'21"
3+00.00	25.00'	31.17'	18.70'	7°09'44"	15°57'05"
3+25.00	25.00'	31.17'	18.70'	7°09'43"	23°06'48"
3+50.00	25.00'	31.17'	18.70'	7°09'43"	30°16'31"
3+75.00	25.00'	31.17'	18.70'	7°09'43"	37°26'14"
4+00.00	25.00'	31.17'	18.70'	7°09'44"	44°35'58"
4+01.08	1.08'	1.35'	0.81'	0°18'33"	44°54'31"

WATER VALVE LOCATION TABLE

VALVE NUMBER	STREET	BASELINE STATION	OFFSET DISTANCE	OFFSET DIRECTION
V1	GRAYSTONE	0+37.00	26'	Rt.

Paving contractor will be responsible to operate all water valves on the project, in the presence of the inspector, to ensure accessibility to the valves, and that all valves (except blowoffs) are left in the "ON" position when the project is completed.

PROJECT NUMBER
47284593

REVISIONS:

STONEBRIDGE 2ND/3RD ADD. PH. 3

GRAYSTONE

STA 0+37.00 TO STA 4+01.08

ENGINEERING | SURVEYING | PLANNING | LANDSCAPE ARCHITECTURE

DESIGN: TJW
DRAWN: TMS
DATE: 11/14
APPROVED: [Signature]

SCALE: Noted
SHEET: **6 OF 27**