

**GENERAL NOTES**

- ALL WATER MAINS AND APPURTENANCES SHALL BE INSTALLED IN ACCORDANCE WITH CITY OF WICHITA, KANSAS STANDARD SPECIFICATIONS AND SPECIAL PROVISIONS.
- CONTRACTOR WILL BE REQUIRED TO PROVIDE A MINIMUM ADVANCE NOTICE OF SEVENTY-TWO (72) HOURS TO UTILITY COMPANIES PRIOR TO STARTING ANY EXCAVATION AS FOLLOWS:  
 KANSAS ONE-CALL 1-800-344-7233  
 OR LOCAL (WICHITA) 687-2470  
 THE CONTRACTOR MUST NOTIFY THE FOLLOWING IN CASE OF EMERGENCY:  
 COX COMMUNICATIONS (CABLE) 262-0661  
 WESTAR (ELECTRIC) 383-8600  
 KANSAS GAS SERVICE (GAS) 832-3101  
 AT&T (TELECOMMUNICATIONS) 268-2008  
 SBC (TELEPHONE) 800-870-8390  
 C.O.W. PUBLIC WORKS & UTILITIES 262-6000  
 BLACK HILLS ENERGY (GAS) 800-303-0357  
 SOUTHERN STAR PIPELINE 303-7800
- THE WATER MAIN SHALL BE CONSTRUCTED ON THE ALIGNMENT SHOWN ON THE PLANS. TREES AND SHRUBS IN PUBLIC RIGHT OF WAY WHICH ARE IN DIRECT CONFLICT WITH PROPOSED NEW CONSTRUCTION SHALL BE REMOVED BY THE CONTRACTOR WITH THE ENGINEER'S APPROVAL, AND SHALL BE INCLUDED IN THE PRICE BID FOR THE INSTALLED WATER PIPE. TREES AND SHRUBS WHICH ARE NOT IN DIRECT CONFLICT WITH PROPOSED CONSTRUCTION SHALL BE SAVED AND PROTECTED FROM DAMAGE.
- OPENING AND CLOSING WATER VALVES SHALL BE DONE SLOWLY TO PREVENT DAMAGE TO THE WATER DISTRIBUTION SYSTEM FROM WATER HAMMER. ALL VALVES CLOSED BY THE CONTRACTOR MUST BE REOPENED AS NEW CONSTRUCTION PERMITS. PROJECT INSPECTOR MUST ASCERTAIN THAT ANY VALVE CLOSED BY THE CONTRACTOR IS REOPENED. CONTRACTOR WILL BE PERMITTED TO OPERATE WATER VALVES ONLY WHEN THE PROJECT INSPECTOR ASSIGNED TO THE PROJECT IS PRESENT.
- CONTRACTOR SHALL NOT START WORK ON THE PROJECT UNTIL THE PROJECT INSPECTOR IS ASSIGNED TO THE PROJECT AND IS PRESENT ON THE SITE. ANY WORK DONE WITHOUT INSPECTION WILL BE REQUIRED TO BE UNCOVERED FOR INSPECTION.
- UNDERGROUND UTILITY SERVICE LINES AND OVERHEAD UTILITY POLE LINES ARE TO BE ADJUSTED AS NECESSARY BY OTHERS PRIOR TO CONSTRUCTION UNLESS THE PLANS SPECIFICALLY CALL FOR THEIR ADJUSTMENT BY THE CONTRACTOR. EXISTING UTILITIES AND THEIR LOCATION, AS SHOWN ON THE PLANS, REPRESENT THE BEST INFORMATION OBTAINABLE FOR DESIGN. LOCATION INFORMATION HAS BEEN OBTAINED FROM THE VARIOUS UTILITY COMPANIES AND IS EITHER FROM COMPANY RECORD DRAWINGS OR COMPANY PROVIDED FIELD LOCATIONS. THE CONTRACTOR WILL BE REQUIRED TO WORK AROUND EXISTING UTILITIES WITHIN THE RIGHT-OF-WAY WHICH DO NOT CONFLICT WITH PROPOSED CONSTRUCTION.
- THE CONTRACTOR SHALL GIVE ALL PROPERTY OWNERS AND/OR TENANTS OF DEVELOPED PROPERTY DIRECTLY ABUTTING CONSTRUCTION OF THIS PROJECT A MINIMUM OF TEN (10) DAYS NOTICE PRIOR TO START OF CONSTRUCTION.
- THE CONTRACTOR SHALL BE RESPONSIBLE FOR PRESERVING PROPERTY IRONS. THE CONTRACTOR WILL BE REQUIRED TO RE-ESTABLISH ANY PROPERTY IRONS WHICH ARE DAMAGED OR DESTROYED BY HIS CONSTRUCTION OPERATIONS. SUCH IRONS SHALL BE RE-ESTABLISHED BY A LICENSED LAND SURVEYOR IN ACCORDANCE WITH STATE LAWS. ALL COSTS FOR THIS WORK SHALL BE SUBSIDIARY TO SITE RESTORATION.
- THE CONTRACTOR SHALL RESTORE ALL DITCHES, SWALES, ROAD SHOULDERS, ENTRANCES AND BANK LINES TO THEIR ORIGINAL SLOPES AND GRADES EXCEPT AS SHOWN OTHERWISE.
- NO SERVICES WILL BE INSTALLED AS PART OF THIS PROJECT.
- INTERURBAN TRAFFIC GENERATED OUTSIDE THE PROJECT AREA, AND LOCAL BUSINESS OR RESIDENTIAL TRAFFIC GENERATED WITHIN THE PROJECT AREA ARE TO BE CARRIED THROUGH CONSTRUCTION AS FURTHER PROMULGATED BY PROJECT SPECIAL PROVISIONS. CONTRACTOR SHALL MAINTAIN ONE OPEN LANE THROUGHOUT THE DURATION OF THE PROJECT.
- RUBBLE FROM THE REMOVAL OF MISCELLANEOUS STRUCTURES INCLUDING ANY TREES REMOVED AND TREE TRIMMINGS SHALL BE DISPOSED OF ON SITES TO BE PROVIDED BY THE CONTRACTOR. THESE SITES SHALL BE APPROVED BY THE ENGINEER AS TO SUITABILITY, APPEARANCE AND SITE LOCATION. LOCATIONS THAT, IN THE OPINION OF THE ENGINEER, WILL LEAVE AN UNSIGHTLY APPEARANCE WILL NOT BE APPROVED. ALL DISPOSAL SITES MUST BE APPROVED BY THE KANSAS DEPARTMENT OF HEALTH AND ENVIRONMENT. MATERIAL EITHER STOCKPILED OR DISPOSED OF IN A FLOOD PLAIN WOULD REQUIRE A KANSAS STATE BOARD OF AGRICULTURE PERMIT. ANY MATERIAL DUMPED IN WATERS OF THE UNITED STATES OR WETLANDS IS SUBJECT TO U.S. CORPS OF ENGINEERS PERMITTING REGULATIONS. ANY MATERIAL BURIED OR STOCKPILED BEYOND APPROVED CONSTRUCTION LIMITS WOULD REQUIRE ADDITIONAL ARCHAEOLOGICAL INVESTIGATIONS UNLESS BURIED IN A PREVIOUSLY APPROVED BORROW LOCATION.
- ALL DISTURBED AREAS TO BE SEEDED WITH RYE GRASS AT A RATE OF 200 LBS. PER ACRE WITHIN 10 DAYS OF CONSTRUCTION. CONTRACTOR TO PREPARE GROUND PER CITY SPECIFICATIONS. COST IS SUBSIDIARY TO SITE PREPARATION AND RESTORATION.
- THE CONTRACTOR SHALL LAY A TRACER WIRE & SET TEST STATIONS ALONG ALL WATER LINE PIPE INSTALLED IN ACCORDANCE WITH CITY OF WICHITA SPECIFICATIONS AND TRACER WIRE DETAIL ON DETAIL SHEET. COST IS SUBSIDIARY TO PIPE INSTALLATION.
- CONTRACTOR TO COORDINATE CONSTRUCTION OF WATERLINE WITH OTHER CONSTRUCTION ACTIVITIES ON SITE. THIS INCLUDES SANITARY SEWER AND MASS GRADING PROJECTS.
- THE CONTRACTOR'S TRAFFIC CONTROL PLAN SHALL INCLUDE ERECTION OF WARNING SIGNS, DETOUR SIGNS, FLASHING LIGHTS, AND BARRICADES TO ENSURE VEHICULAR & PEDESTRIAN SAFETY FOR VEHICULAR AND PEDESTRIAN TRAFFIC IN ACCORDANCE WITH THE LATEST VERSION OF THE MUTCD.
- DEVELOPER FOR THIS PROJECT IS:  
 PERFECTION SIGNATURE PROPERTIES, LLC.  
 11828 W. CENTRAL #124  
 WICHITA, KS 67212  
 SCOTT LEHNER  
 316-729-1900

**WATER DISTRIBUTION SYSTEM IMPROVEMENTS**

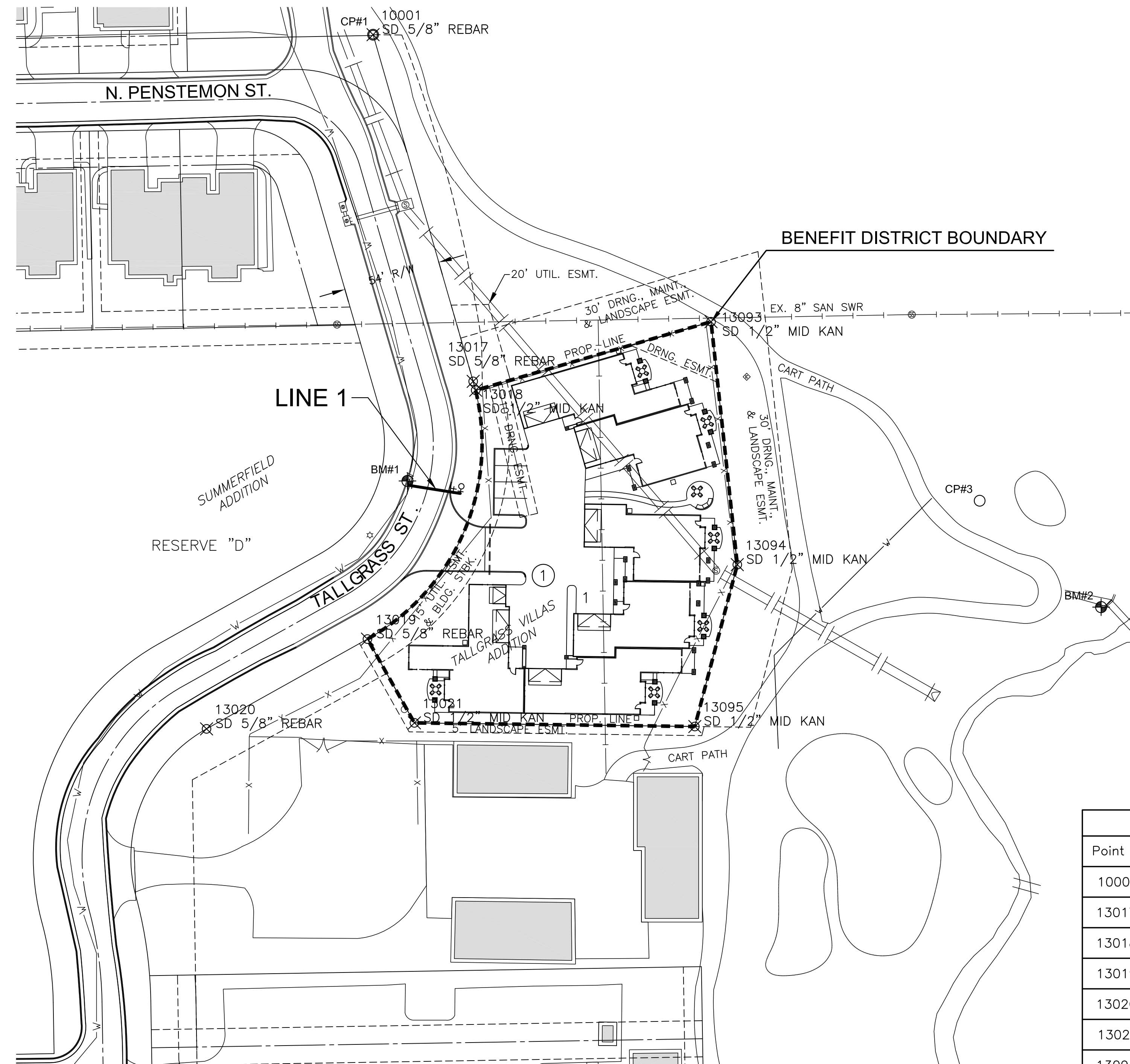
TO SERVE

**TALLGRASS VILLAS ADDITION**

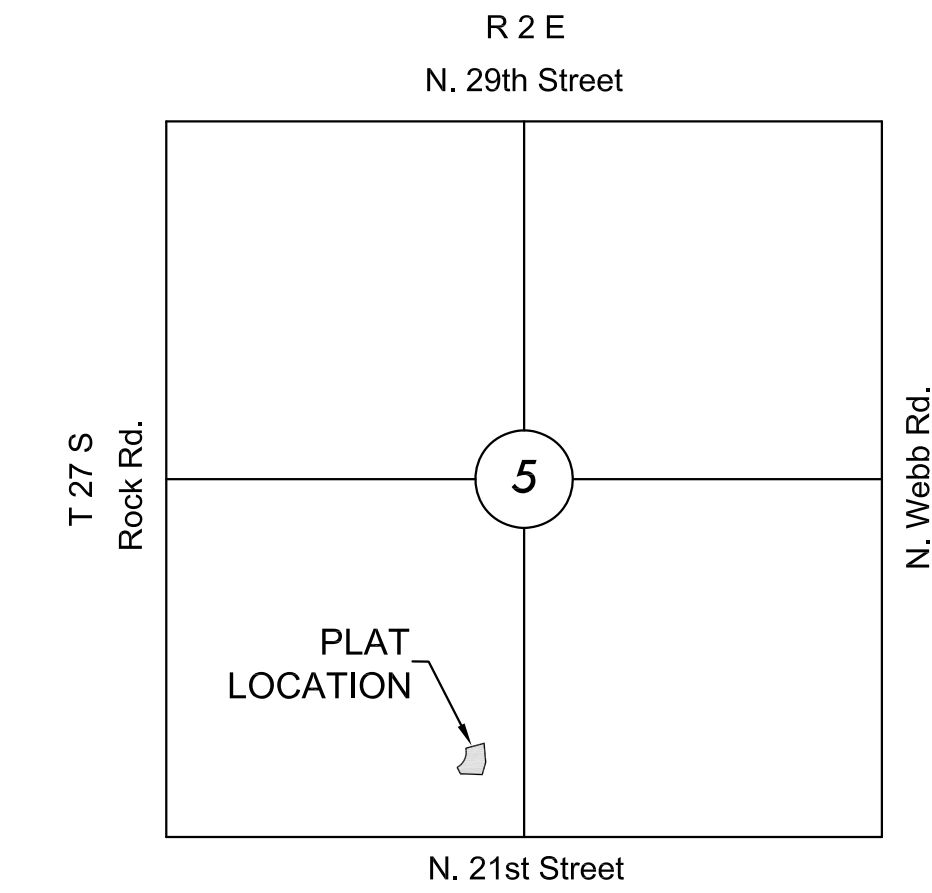
PROJECT NO. 448-90645

THE CITY OF WICHITA, KANSAS  
 GARY JANZEN, P.E. - CITY ENGINEER

OCA NO. 735517



**NOTE: WATER LINE VALVES TO BE OPERATED BY CONTRACTOR ONLY IF WATER INSPECTOR IS ON SITE.**



**VICINITY MAP**

No Scale

**INDEX TO DRAWINGS**

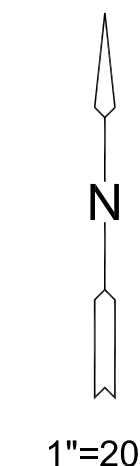
SHEET NO.	DESCRIPTION
1	TITLE SHEET
2	DETAILS
3	LINE 1
4-8	BMP SHEETS
9	FINAL PLAT

**BENCHMARKS**

- BM#1** Plus Cut set on top of west Curb of Tallgrass Street in middle of site 36.5' NE of a light pole. Elev. = 1379.16 NAVD 88.
- BM#2** Plus cut set on center south end of wing wall on the west end of a pedestrian bridge 200' east of the site. Elev. = 1374.66 NAVD 88

**CONTROL POINTS**

- CP#-1** 5/8" Rebar at the NE corner of Reserve "E", Summerfield Addn. Elev. = 1379.20 NAVD 88  
 N = 1700483.438 E = 1677708.600
- CP#-3** 60d Nail set 18' NE of cart path & 92' NW of the end of a pedestrian bridge. Elev. = 1376.344 NAVD 88  
 N = 1700225.549 E = 1678044.330



PLAT POINTS			
Point #	Northing	Easting	Desc.
10001	1700483.44	1677708.60	SD 5/8" REBAR
13017	1700291.59	1677764.01	SD 5/8" REBAR
13018	1700286.69	1677765.40	SD 1/2" MID KAN
13019	1700148.99	1677705.50	SD 5/8" REBAR
13020	1700099.31	1677616.44	SD 5/8" REBAR
13021	1700102.63	1677731.49	SD 1/2" MID KAN
13093	1700324.61	1677895.66	SD 1/2" MID KAN
13094	1700190.18	1677910.19	SD 1/2" MID KAN
13095	1700100.61	1677886.68	SD 1/2" MID KAN



**WATER DISTRIBUTION PLANS FOR**  
**TALLGRASS VILLAS ADDITION**  
**WICHITA, KS**

©2014 MKEC Engineering All Rights Reserved  
 These drawings and their contents, including, but not limited to, all concepts, designs, & ideas are the exclusive property of MKEC Engineering (MKEC), and may not be used or reproduced in any way without the express consent of MKEC.

TITLE SHEET	
PROJECT NO.	448-90645
DATE	NOV. 2014
SCALE	1"=40'
DESIGNED	DRAWN
AJK	BKS
CHECKED	AJK
NO.	REVISION
DATE	
SHEET NO.	
1 OF 9	

PLOTTED: Wednesday, November 19, 2014 8:04:18 AM

J:\PROJECTS\2013\10107077\_PERFECTION - TALLGRASS-CIVIL\CAD\DWG\13077 TITLE.DWG