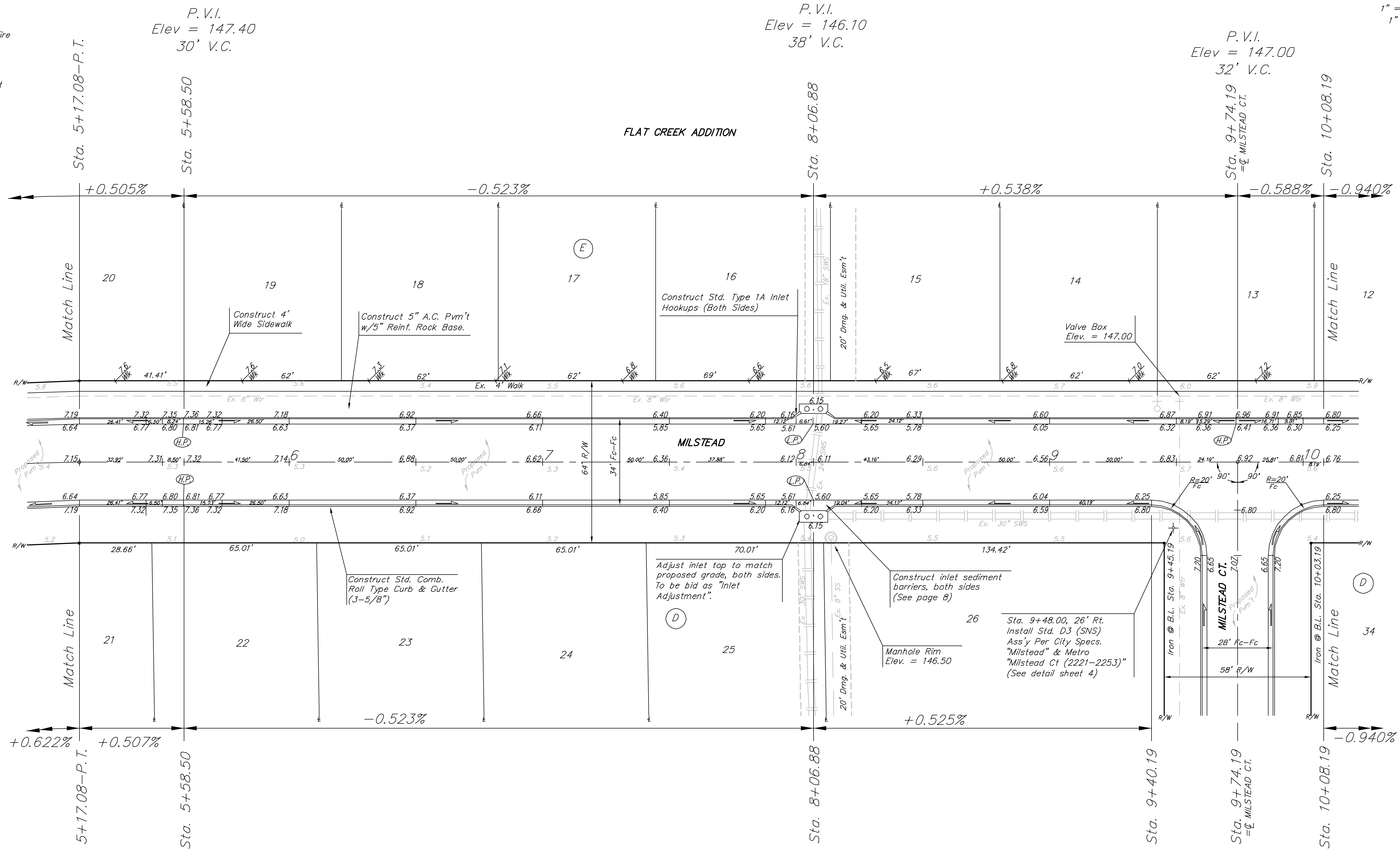


BENCHMARKS:
 BM #1: "□" Cut in top of curb, east return of SE corner of Lotus & Parkridge.
 Elev. = 145.99 (City Datum)
 BM #2: C.O.W. Disc Adjacent to Fire Hydrant in S.E. Curb Return of Grant & Milstead.
 Elev. = 146.09 (City Datum)
 BM #3: "X" Cut in Top of Curb at South End of Golden Hills Ct. Cul-de-Sac.
 Elev. = 147.73 (City Datum)

Scale
 1" = 20' Horizontal
 1" = 5' Vertical
 • = Iron



P.V.I.
 Elev = 147.19
 NO V.C.

P.V.I.
 Elev = 147.40
 30' V.C.

P.V.I.
 Elev = 146.10
 38' V.C.

NOTE:
 ROLL TYPE CURB & GUTTER TO BE CONSTRUCTED ON THE PAVEMENT SHOWN ON THIS SHEET. TOP OF CURB ELEVATIONS ARE GIVEN FOR FULL HEIGHT CURB.

FLAT CREEK ADDITION - PHASE III
MILSTEAD
 STA 5+17.08 TO STA 10+08.19

BAUGHMAN COMPANY P.A.
 ENGINEERING, SURVEYING, & PLANNING
 315-262-7271 • 315 ELLIS • WICHITA, KANSAS 67211

PROJECT NUMBER
472-83385

DESIGN NEW	DRAWN KDP/CNX	APPROVED	DATE 10/03	SCALE NOTED
---------------	------------------	----------	---------------	----------------

SHEET
7
 OF
44

F:\K\1703\1712 02-06-03