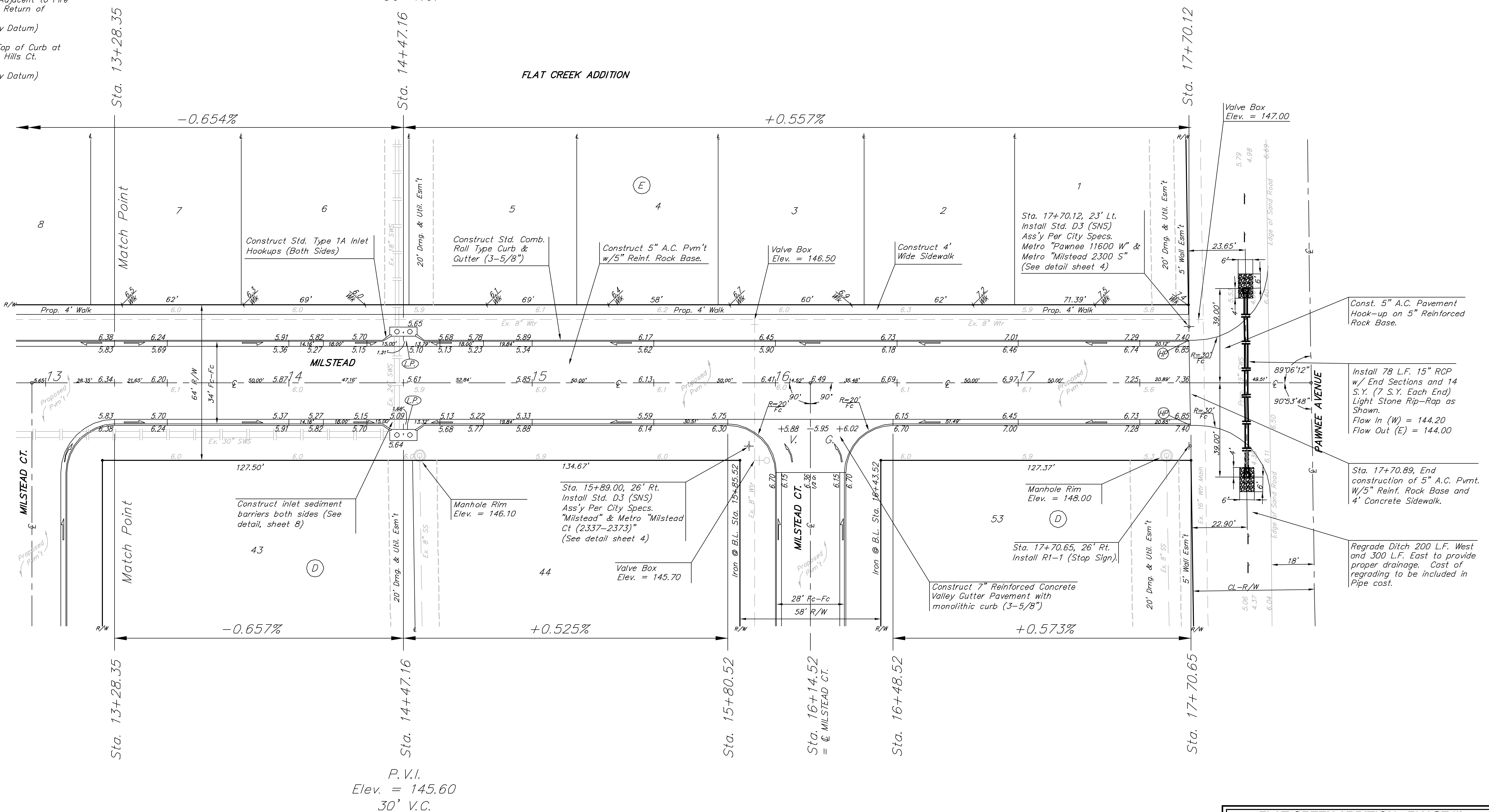


**BENCHMARKS:**  
 BM #1: "□" Cut in top of curb, east return of SE corner of Lotus & Parkridge.  
 Elev. = 145.99 (City Datum)  
 BM #2: C.O.W. Disc Adjacent to Fire Hydrant in S.E. Curb Return of Grant & Milstead.  
 Elev. = 146.09 (City Datum)  
 BM #3: "X" Cut in Top of Curb at South End of Golden Hills Ct. Cul-de-Sac.  
 Elev. = 147.73 (City Datum)

Scale  
 1" = 20' Horizontal  
 1" = 5' Vertical  
 • = Iron

P.V.I.  
 Elev. = 145.60  
 30' V.C.

FLAT CREEK ADDITION



Const. 5" A.C. Pavement Hook-up on 5" Reinforced Rock Base.

Install 78 L.F. 15" RCP w/ End Sections and 14 S.Y. (7 S.Y. Each End) Light Stone Rip-Rap as Shown. Flow In (W) = 144.20 Flow Out (E) = 144.00

Sta. 17+70.89, End construction of 5" A.C. Pavm't w/5" Reinf. Rock Base and 4' Concrete Sidewalk.

Regrade Ditch 200 L.F. West and 300 L.F. East to provide proper drainage. Cost of regrading to be included in Pipe cost.

NOTE: ROLL TYPE CURB & GUTTER TO BE CONSTRUCTED ON THE PAVEMENT SHOWN ON THIS SHEET. TOP OF CURB ELEVATIONS ARE GIVEN FOR FULL HEIGHT CURB.

FLAT CREEK ADDITION - PHASE III  
**MILSTEAD**  
 STA 13+28.35 TO STA 17+70.89

**BAUGHMAN COMPANY P.A.**  
 ENGINEERING, SURVEYING, & PLANNING  
 316-262-7271 • 315 ELLIS • WICHITA, KANSAS 67211

PROJECT NUMBER  
**472-83395**

DESIGN NBW DRAWN KDP/GNX APPROVED DATE 10/03 SCALE NOTED

SHEET **9** OF **44**

FROM PLS 5174 02-06-E386