

STREET IMPROVEMENTS

83455

TO SERVE

THE COLLECTIVE

FOUNDERS CIRCLE-FROM THE SOUTH LINE OF 21ST STREET NORTH TO THE NORTH LINE OF LOT 3, BLOCK 1, THE COLLECTIVE

OCA NO. 765834

CITY OF WICHITA PROJECT NO. 472-83455

CITY OF WICHITA, KANSAS

JAMES L. ARMOUR, PE. - ACTING CITY ENGINEER

468-83771 (OCA NO. 622089) S.S. EXTENSION UNDER FOUNDERS CIRCLE (formerly "WAWONA")

INDEX OF SHEETS

1. TITLE SHEET
2. PLAT - THE COLLECTIVE
3. PLAT - WICHITA CLINIC ADDITION
4. TYPICAL SECTION
5. PLAN
6. FOUNDERS CIRCLE ENTRANCE DETAILS & 8" CLEANOUT RISER ASSBLY. DETAIL
7. VALLEY GUTTER DETAILS
8. STANDARD DRIVE ENTRANCE DETAILS
9. MANHOLE ADJUSTMENT DETAILS
10. SIGNING DETAILS
11. EROSION CONTROL PLAN
- 12.-15. EROSION CONTROL
- 16.-17. CROSS SECTIONS

PROJECT SURVEY CONTROL

- BM 1: STEP NAIL IN N. SIDE P.P. ON S.W. CORNER 21ST N. & FOUNDERS CIRCLE (FORMERLY "WAWONA")
ELEV.=197.32
- BM 2: CHISELED "d" E. END CTR. MEDIAN 21ST N.E. OF K96.
ELEV.=189.43
- BM 3: R.R. SPIKE IN N. FACE P.P. 120± S. OF CTR. RES. A ON W. SIDE OF FOUNDERS CIRCLE (FORMERLY "WAWONA")
ELEV.=190.17

EARTHWORK

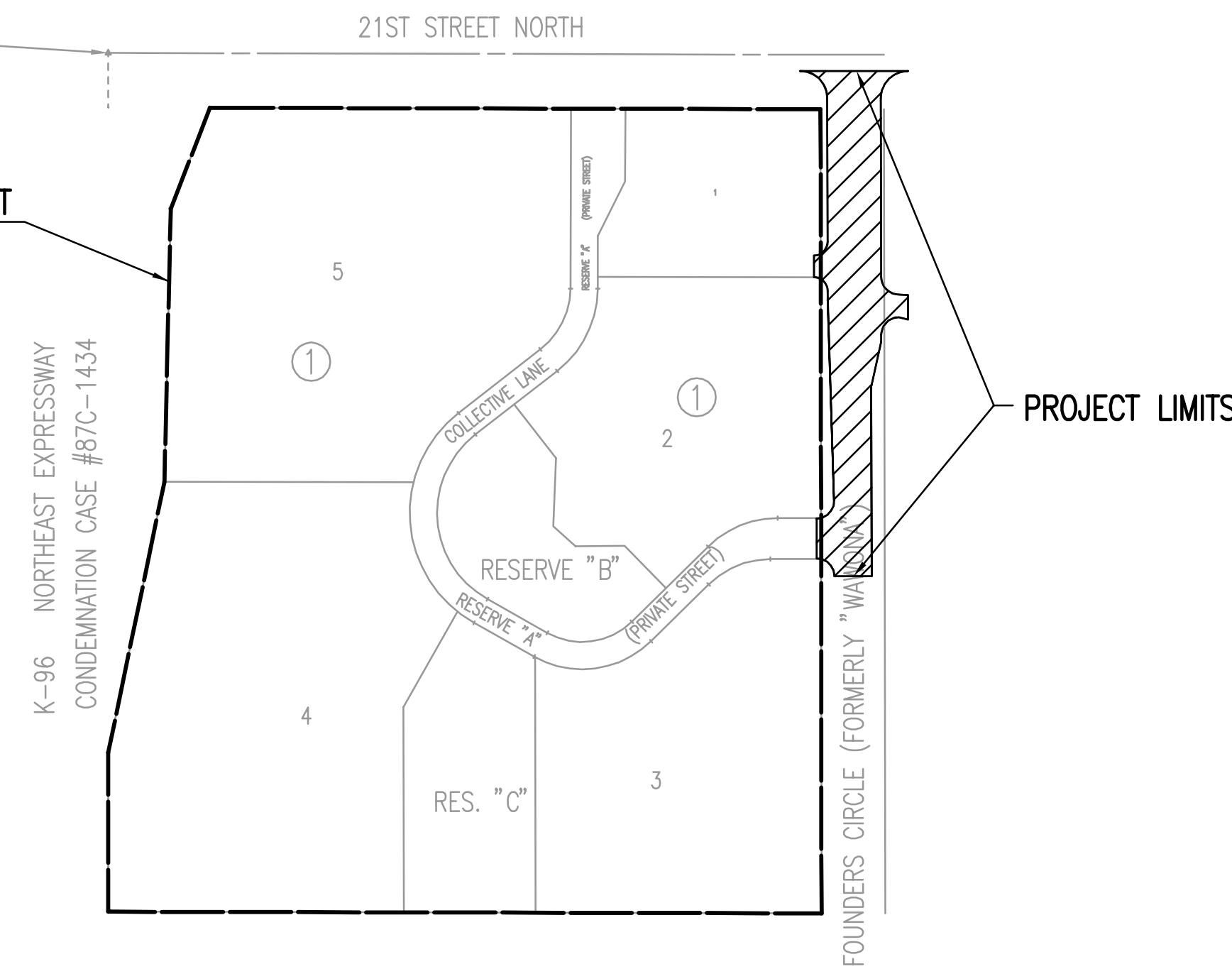
EXCAVATION 2,153 CU. YDS.
COMPACTED FILL 19 CU. YDS.

PROJECT LENGTH = 573.87 LIN. FT.

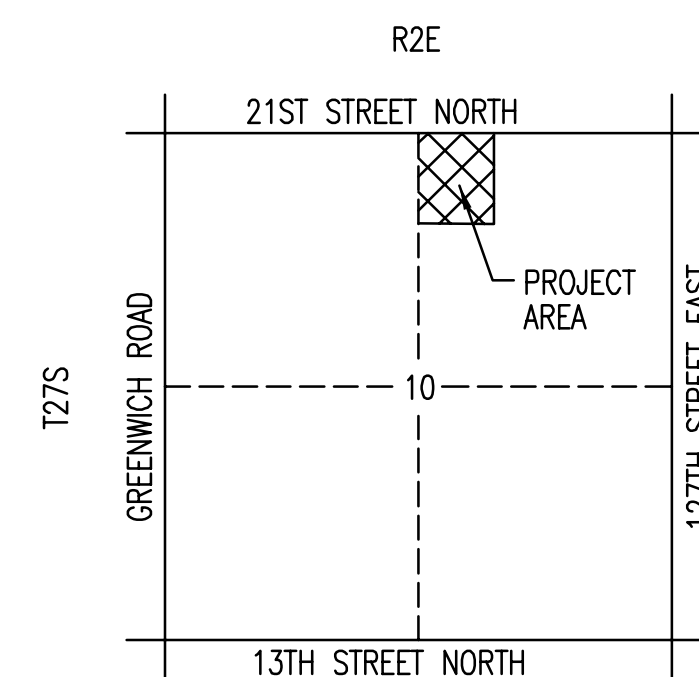
ALL EXCESS EXCAVATED MATERIAL, INCLUDING 252 C.Y. OF ROCK EXCAVATION FROM PAVEMENT REMOVAL SHALL BE DISPOSED OF BY THE CONTRACTOR OFF-SITE. SEE GENERAL NOTES.

NW Corner, NE 1/4,
Sec. 10, T27S, R2E
of the 8th P.M.
Found 5/8" Bar
with Forgy Cap

IMPROVEMENT DISTRICT
BOUNDARY



SCALE: 1" = 150'



VICINITY MAP

GENERAL NOTES

UNDERGROUND UTILITY SERVICE LINES AND OVERHEAD UTILITY POLE LINES ARE TO BE ADJUSTED AS NECESSARY BY OTHERS PRIOR TO CONSTRUCTION UNLESS THE PLANS SPECIFICALLY CALL FOR THEIR ADJUSTMENT BY THE CONTRACTOR. EXISTING UTILITIES AND THEIR LOCATION, AS SHOWN ON THE PLANS, REPRESENT THE BEST INFORMATION OBTAINABLE FOR DESIGN. LOCATION INFORMATION HAS BEEN OBTAINED FROM THE VARIOUS UTILITY COMPANIES AND IS EITHER FROM COMPANY RECORD DRAWINGS OR COMPANY PROVIDED FIELD LOCATIONS. THE CONTRACTOR WILL BE REQUIRED TO WORK AROUND EXISTING UTILITIES WITHIN THE RIGHT-OF-WAY WHICH DO NOT CONFLICT WITH PROPOSED CONSTRUCTION.

TREES AND SHRUBS IN PUBLIC RIGHT-OF-WAY WHICH ARE IN DIRECT CONFLICT WITH PROPOSED NEW CONSTRUCTION SHALL BE REMOVED BY THE CONTRACTOR WITH THE ENGINEER'S APPROVAL. TREES AND SHRUBS WHICH ARE NOT IN DIRECT CONFLICT WITH PROPOSED NEW CONSTRUCTION SHALL BE SAVED AND PROTECTED FROM DAMAGE.

RUBBLE FROM THE REMOVAL OF MISCELLANEOUS STRUCTURES SHALL BE DISPOSED OF ON SITES TO BE PROVIDED BY THE CONTRACTOR AND APPROVED AS NOTED BELOW.

ALL DISPOSAL SITES MUST BE APPROVED BY THE KANSAS DEPARTMENT OF HEALTH AND ENVIRONMENT. MATERIAL EITHER STOCKPILED OR DISPOSED OF IN A FLOOD PLAIN WOULD REQUIRE A KANSAS STATE BOARD OF AGRICULTURE PERMIT. ANY MATERIAL DUMPED IN WATERS OF THE UNITED STATES OR WELANDS IS SUBJECT TO U.S. CORPS OF ENGINEERS PERMITTING REGULATIONS. ANY MATERIAL BURIED OR STOCKPILED BEYOND APPROVED CONSTRUCTION LIMITS WOULD REQUIRE ADDITIONAL ARCHEOLOGICAL INVESTIGATIONS UNLESS BURIED IN A PREVIOUSLY APPROVED BORROW LOCATION.

CONTRACTOR SHALL SATISFY HIMSELF OF SURFACE AND SUBSURFACE CONDITIONS PRIOR TO BIDDING.

TEMPORARY SURFACING MATERIAL (ROCK, ASPHALT, ETC.) MAY HAVE BEEN PLACED WITHIN STREET RIGHTS-OF-WAY FOR HAUL ROADS AND TEMPORARY ACCESS. CONTRACTOR SHALL FIELD VERIFY EXISTING CONDITIONS TO DETERMINE EXTENT, IF ANY, OF SUCH SURFACING. CONTRACTOR SHALL REMOVE SAID TEMPORARY SURFACING IN THE SAME MANNER AS NOTED ABOVE FOR RUBBLE. THIS REMOVAL SHALL BE SUBSIDIARY TO "EXCAVATION".

CONTRACTOR SHALL PROVIDE A MINIMUM FORTY-EIGHT (48) HOUR ADVANCE NOTICE (EXCLUDING WEEKENDS AND HOLIDAYS) PRIOR TO BEGINNING ANY EXCAVATION, TO KANSAS ONE-CALL SYSTEM, A UTILITY LOCATION SERVICE, AT (316) 687-2470 TO REQUEST THE FOLLOWING UTILITY COMPANIES TO LOCATE ALL EXISTING LINES WITHIN THE PROJECT AREA: PEOPLES NATURAL GAS, WESTAR ENERGY, SOUTHWESTERN BELL TELEPHONE, COX COMMUNICATIONS, CITY OF WICHITA SEWER MAINTENANCE AND CITY OF WICHITA WATER DEPARTMENT.

THE CONTRACTOR SHALL BE RESPONSIBLE FOR PRESERVING PROPERTY IRONS. THE CONTRACTOR WILL BE REQUIRED TO RE-ESTABLISH ANY PROPERTY IRONS WHICH ARE DAMAGED OR DESTROYED BY HIS CONSTRUCTION OPERATIONS. SUCH IRONS SHALL BE RE-ESTABLISHED BY A LICENSED LAND SURVEYOR IN ACCORDANCE WITH STATE LAWS.

THE WATER DEPARTMENT SHALL FIELD LOCATE WATER VALVES ONE TIME DURING CONSTRUCTION WHEN REQUESTED BY THE CONTRACTOR. IT SHALL BE THE CONTRACTOR'S RESPONSIBILITY TO PRESERVE SUCH FIELD LOCATIONS DURING THE CONSTRUCTION PROCESS. WATER VALVES, WATER VALVE BOXES OR FIRE HYDRANTS DAMAGED DURING CONSTRUCTION SHALL BE REPAIRED BY THE CONTRACTOR AT HIS OWN EXPENSE.

THE CONTRACTOR SHALL ADJUST WATER VALVE BOXES AS DIRECTED BY THE ENGINEER. THIS WORK TO BE SUBSIDIARY TO OTHER BID ITEMS.

THE CONTRACTOR SHALL APPLY PERMANENT SEED, FERTILIZER, AND MULCH TO THE STREET RIGHT-OF-WAYS, AND UTILITY EASEMENTS IN ACCORDANCE WITH STANDARD SPECIFICATIONS. SEED SHALL BE K-31 FESCUE APPLIED AT THE RATE OF 350 LBS. PER ACRE. FERTILIZER SHALL BE 12-24-12 APPLIED AT THE RATE OF 350 LBS. PER ACRE. MULCH SHALL BE PRAIRIE HAY APPLIED AT THE RATE OF 15 BALES PER ACRE. THIS WORK SHALL BE PAID FOR AT THE CONTRACT PRICE BID PER ACRE FOR "PERMANENT SEEDING".

EROSION CONTROL (BMP'S)
THE CONTRACTOR SHALL ABIDE BY THE PROVISIONS OF THE STORM WATER POLLUTION PREVENTION PLAN DURING CONSTRUCTION AND SHALL EXECUTE A CONTRACTOR CERTIFICATION FORM PRIOR TO CONSTRUCTION. THE CONTRACTOR SHALL BE RESPONSIBLE FOR MAINTAINING EROSION CONTROL MEASURES UNTIL A WRITTEN TRANSFER OF RESPONSIBILITY IS ISSUED BY THE OWNER.

SILT FENCE BARRIER 107 L.F.
CONSTRUCTION ENTRANCE 1 EACH
BACK OF CURB PROTECTION 982 L.F.

PAVEMENT REMOVALS, PIPE REMOVALS, SIGN REMOVALS, AND MISCELLANEOUS REMOVALS NECESSARY FOR CONSTRUCTION SHALL NOT BE MEASURED OR PAID FOR DIRECTLY, BUT SHALL BE CONSIDERED INCIDENTAL TO "SITE CLEARING".

FEBRUARY 2004

PLANS PREPARED BY
PROFESSIONAL ENGINEERING CONSULTANTS, P.A.
ENGINEERS
WICHITA, KANSAS