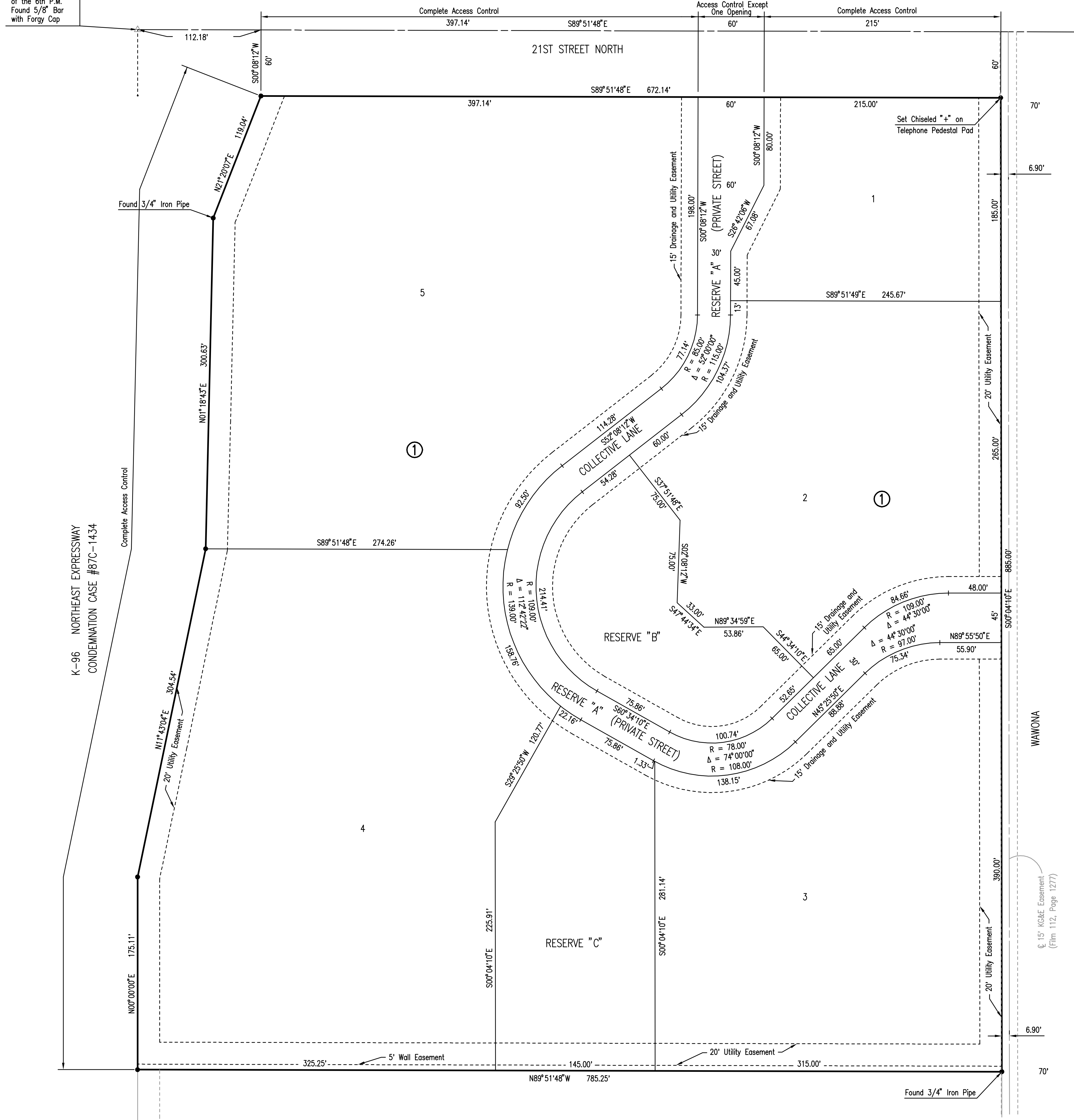


NW Corner, NE 1/4,  
Sec. 10, T27S, R2E  
of the 6th P.M.  
Found 5/8" Bar  
with Forgy Cap



SCALE : 1" = 50'  
• = 3/4" IRON PIPE W/PEC CAP UNLESS OTHERWISE NOTED

# THE COLLECTIVE

AN ADDITION TO WICHITA, SEDGWICK COUNTY, KANSAS

DSNR: BER OPER: SAW SCALE: 1"=50.00  
P: \SENTOUT\2003\03088\Street\DWGs\02str\PLAT 03-15-2004 02:24:55 pm

No.	Revision	By	Date
CITY OF WICHITA, KANSAS JAMES L. ARMOUR, P.E. - ACTING CITY ENGINEER THE COLLECTIVE PLAT CITY OF WICHITA PROJECT NO. 472-83455			
<b>Professional Engineering Consultants, P.A.</b> 303 S. TOPEKA • WICHITA, KANSAS 67202 316-262-2691 • FAX 316-262-3003			
Designed by	BER	Job No.	35-03088-0042
Drawn by	JP, SAW	Date	DECEMBER 2003
			Sht. 2 of 17

