

# STREET PAVING FOR KENNEDY

to serve

## THE WOODS ADDITION - PHASE 5

Jayson from the west line of Lot 22, Block C, west to the east line of Kennedy  
Kennedy from the east line of Lot 53, Block B to the west line of Jayson

### CITY OF WICHITA, KANSAS

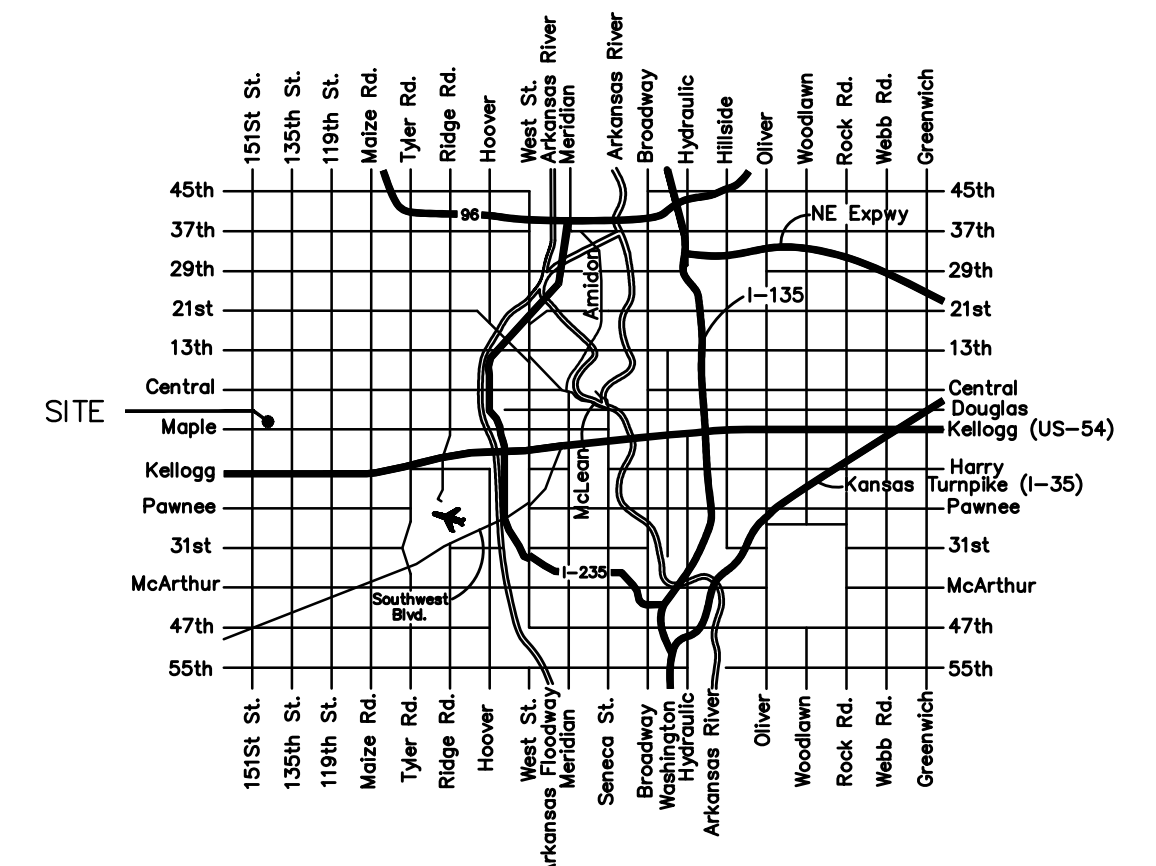
Gary Janzen, P.E. City Engineer

Project Number

472 - 84949

O.C.A. Number

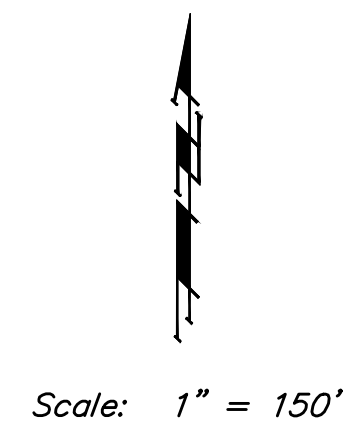
766312



VICINITY MAP

### GENERAL NOTES:

- Contractor will be required to provide notice to utility companies a minimum of forty-eight (48) hours prior to any excavation, as follows:  
  
Kansas One-Call 687-2470  
  
The Contractor must notify the following in case of an emergency:  
  
Cox Communications 262-4270  
Kansas Gas Service 1-888-482-4950  
Westar Energy 383-8650  
Aquila Energy 1-800-303-0357  
ATT 268-2245  
City of Wichita Water Dept. 268-4563  
City of Wichita Sewer Maint. 268-4024  
City of Wichita Storm Sewer Maint. 268-4090  
City of Wichita Traffic Maint. 268-4034  
Conoco Phillips Pipeline Co. 1-877-267-2290  
Southern Star Pipeline Co. 529-6600  
Kinder-Morgan Pipeline Co. 1-888-844-5658
- Utility service lines, poles, valve boxes, meters, and etcetera are to be adjusted as necessary by others prior to construction unless the plans specifically call for their adjustment by the Contractor or unless the plans specifically identify a utility to be adjusted by its owner during construction. Existing utilities and their location, as shown on the plans, represent the best information obtainable for design. The Contractor will be required to work around existing utilities within the right-of-way which do not conflict with proposed construction.
- Rubble from the removal of miscellaneous structures and excess excavation which is to be wasted shall be disposed of on sites to be provided by the Contractor. These sites shall be approved by the Engineer as to suitability, appearance and site location. Locations, in the opinion of the Engineer, that will leave an unsightly appearance will not be approved. All disposal sites must be approved by the Kansas Department of Health and Environment. Material either stockpiled or disposed of in a flood plain would require a Kansas State Board of Agriculture permit. Any material dumped in waters of the United States or wetlands is subject to U.S. Corps. of Engineers permitting regulations. Any material buried or stockpiled beyond approved construction limits would require additional archaeological investigations unless buried in a previously approved borrow location.
- Trees and shrubs in public right-of-way which are in direct conflict with proposed new construction shall be removed by the Contractor ONLY with the Developer or Baughman Company approval. Trees and shrubs which are not in direct conflict with proposed new construction shall be saved and protected from damage.
- The Contractor shall give all property owners and/or tenants of developed property abutting the construction of this project a minimum of ten (10) days notice prior to start of construction.
- The Contractor shall be responsible for preserving property irons. The Contractor will be required to re-establish any property irons which are damaged or destroyed by his construction operations. Such irons shall be re-established by a licensed Land Surveyor in accordance with state laws.
- All existing and proposed erosion control measures including silt fencing, erosion control mat, straw bales, inlet barriers, and const. entrance shall be maintained throughout construction by the Contractor and until project is accepted by the City of Wichita. The on-site Engineer shall complete weekly reports on the status of erosion control measures. The Contractor shall be required to comply with maintenance and/or replacement of erosion control measures as determined by the on-site Engineer until project is accepted by City of Wichita.
- A saw cut of at least one-half the depth of existing surface courses or one-fourth the depth of the existing total pavement thickness shall be provided at locations where proposed construction abuts the existing surface course or pavement for which partial removal of that surface or pavement is required. Sawed joint to facilitate removal within three (3) feet of existing joints will not be permitted and for such instances the limits of removal shall extend to the existing joint. Such saw cuts will not be paid for directly and this cost shall be considered as subsidiary to the removal of the surface or pavement.
- All areas disturbed during construction shall be seeded as noted on the Erosion Control Plan. Contractor shall prepare ground per City of Wichita Specifications. All costs associated with seeding shall be included in bid item "Project Seeding"
- The Contractor shall adjust valve boxes as necessary to match proposed grade. Cost to be included in bid item, "Site Restoration."
- The Contractor shall drain any standing water in sump areas of the proposed pavement. Contractor shall overexcavate and recompact these areas as required to maintain compaction of 95% Standard Proctor Density. Cost to be incidental to pavement.
- Limits of earthwork shall match existing ground elevations at the right-of-way line unless otherwise noted on the plans with a new finished grade elevation. When a new finished grade elevation is shown, the earthwork shall extend one foot beyond the right-of-way line and then slope up or down using permissible slopes to match the existing ground surface.
- The Developer for this project is Jay Russell and may be reached at (316) 722-2417.
- Excess excavation shall be stockpiled or spread on-site at a location determined by the developer or design engineer.



Scale: 1" = 150'

### BENCHMARKS

BM #1: City of Wichita Benchmark Disc, top of curb adjacent to fire hydrant, west end of north curb return, intersection of Fawnwood and Fawnwood Ct., south corner of Lot 11, Block D, The Woods Addition.  
Elev. = 1382.28 NGVD29

BM #2: City of Wichita Benchmark Disc, Top of curb top of curb adjacent to fire hydrant, east end of north curb return, intersection of Fawnwood and Kennedy, southwest corner of Lot 53, Block B, The Woods Addition.  
Elev. = 1378.78 NGVD29

BM #3: City of Wichita Benchmark Disc, Top of curb top of curb adjacent to fire hydrant at west end of north curb return, intersection of Jayson and City View Cir, southeast corner of Lot 46, Block B, The Woods Addition.  
Elev. = 1378.78 NGVD29

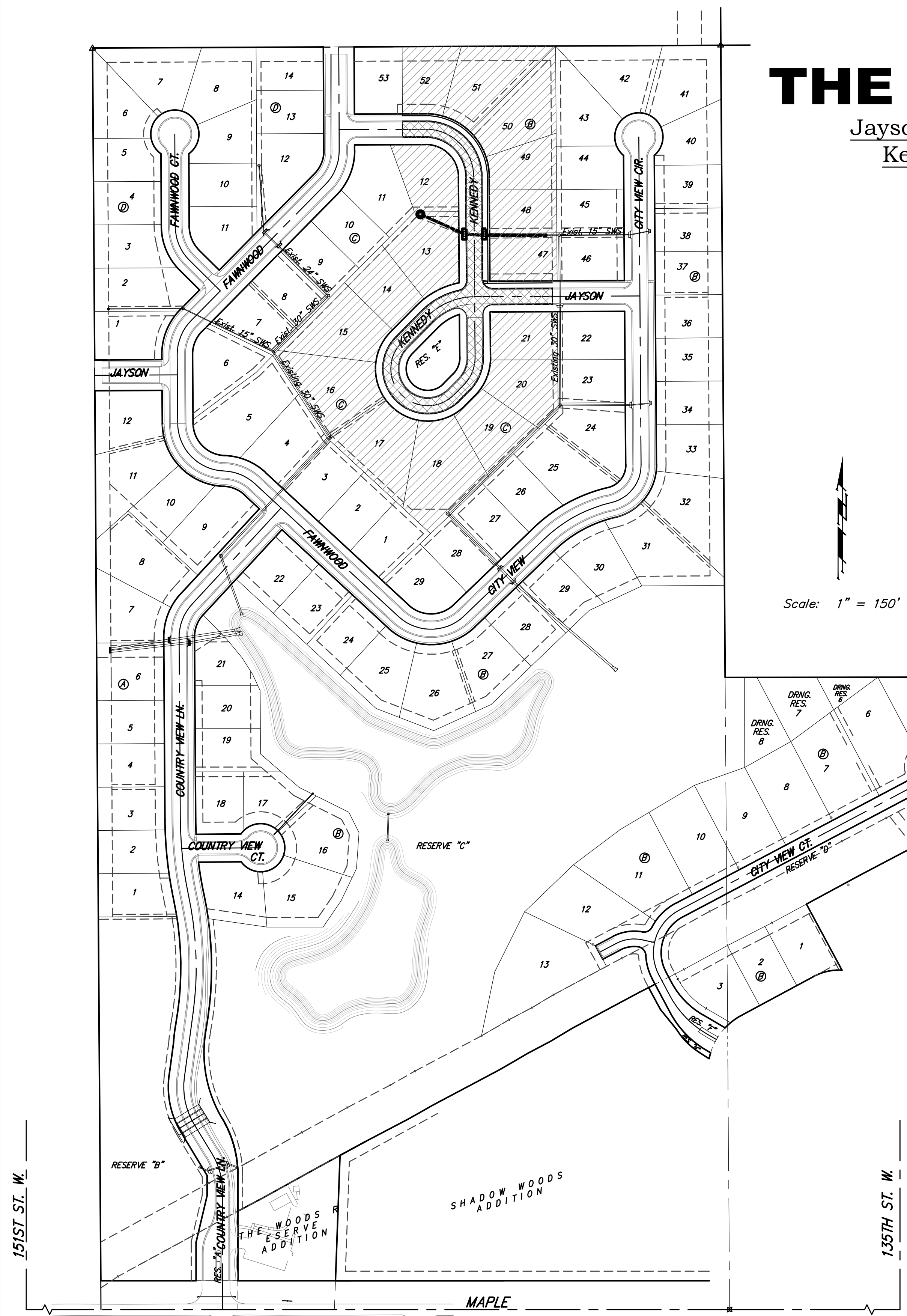
### SHEET INDEX

Title Sheet	1
35' Pavement Detail	2
Curb & Gutter Detail	3
Sign Detail	4
Miscellaneous Details	5
Pavement Underdrain Details	6
Kennedy	7-10
Jayson	11
SWS Line 1	12
Erosion Control Plan	13
Erosion Control BMP Details	14-17
Std. Type 1A Curb Inlet Detail	18
Yard Inlet Detail	19
Ring & Cover Detail	20
Cross Sections	21-24
Coordinate Sheet	25
Copy of Plat	26

### Project Earthwork Totals

Excavation = 880 C.Y.  
Loose Fill = 445 C.Y.  
Compacted Fill = 0 C.Y.

Total Project Length  
1,263 L.F. = 0.24 Miles



Benefit District

Proposed Streets



Baughman Company, P.A. 315 Ellis St. Wichita, KS 67211 P 316-262-7271 F 316-262-0148  
ENGINEERING | SURVEYING | PLANNING | LANDSCAPE ARCHITECTURE

