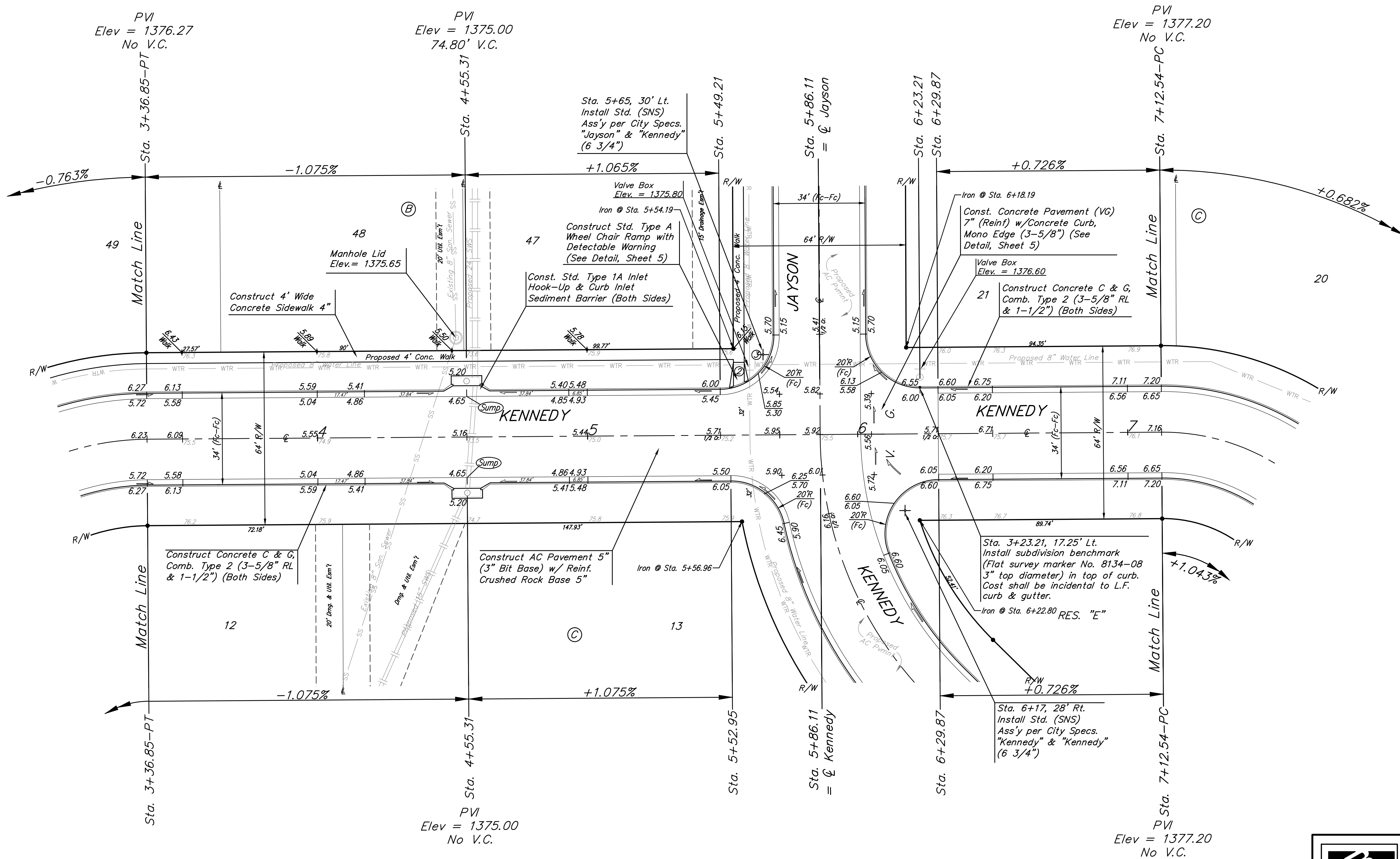
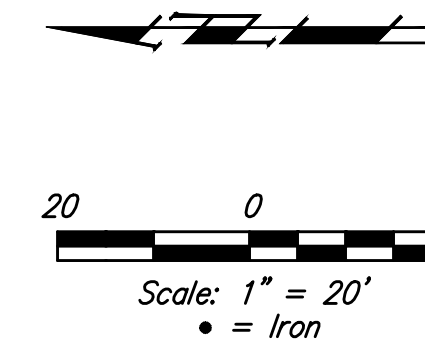


BENCHMARKS:

BM #1: City of Wichita Benchmark
Disc, top of curb adjacent to fire hydrant, west end of north curb return, intersection of Fawnwood and Fawnwood Ct., south corner of Lot 11, Block D, The Woods Addition.
Elev. = 1382.28 NGVD29

BM #2: City of Wichita Benchmark
Disc, Top of curb top of curb adjacent to fire hydrant, east end of north curb return, intersection of Fawnwood and Kennedy, southwest corner of Lot 53, Block B, The Woods Addition.
Elev. = 1378.78 NGVD29

BM #3: City of Wichita Benchmark
Disc, Top of curb top of curb adjacent to fire hydrant at west end of north curb return, intersection of Jayson and City View Cir, southeast corner of Lot 46, Block B, The Woods Addition.
Elev. = 1378.78 NGVD29



Subdivision Bench Marks

Street & Station	Location Description	Elevation
Kennedy 3+23.21, 17.25' Lt.	Adjacent to Fire Hydrant at S End of E Curb Return of Kennedy and Jayson	

NOTE: Roll Type Curb & Gutter (Type 2) to be constructed on the pavement shown on this sheet. Top of curb elevations are given for Full Height Curb (Type 4).

	The Woods Addition - Phase 5	
	KENNEDY STA. 3+66.85 TO STA. 7+12.54	
Baughman Company, P.A. 315 Ellis St. Wichita, KS 67211 P 316-263-7271 F 316-262-0149 ENGINEERING SURVEYING PLANNING LANDSCAPE ARCHITECTURE		
PROJECT NUMBER 472-84949	DESIGN AEG	DRAWN JAK
REVISIONS:	APPROVED DATE 8/14	SCALE 1" = 20' SHEET 8 OF 26
E:\Projects\The Woods Addition\Phase 5\Str_1405-E068\Street Plans.dwg		