

1	INDEX OF SHEETS
2	Cover Sheet
3	Typical Section
4	Paving Plan 1
5	Paving Plan 2
6	Paving Plan 3
7	Paving Plan 4
8-10	Traffic Control Plan
11	Cross Sections
	BMP Details

GENERAL NOTES

1. Contractor will be required to provide notice to utility companies a minimum of twenty-four (24) hours prior to any excavation, as follows:

Kansas One-Call	687-2470
The Contractor must notify the following in case of an emergency:	
Cox Communications	262-4270
K.P.L. Gas Service Company	383-8850
Kansas Gas & Electric Company	261-6152
Southwestern Bell Telephone Company	1-800-870-8390
City of Wichita Water & Sewer Department	262-6000
Kansas Gas Service	832-3101
Aquilia (Peoples Natural Gas)	1-800-303-0357
2. Exist, utilities and their locations, as shown on the plans, represent the best information obtainable for design. Location information has been obtained from the various utility companies and is either from company record drawings or company-provided field locations. The Contractor will be required to work around existing utilities which do not conflict with proposed construction.
3. The Contractor to verify utility locations prior to construction of this project.
4. Utility service and installation shall be coordinated with the respective utility owners. Contacts are:

Kansas Gas Service	James Stoltz	831-3122
KGE	Russ Chitwood	261-6251
Aquilia (Peoples Natural Gas)	Calvin Briggs	941-1608
Wichita Water	Paul Bryant	268-4555
Southwestern Bell	Bill Perkins	268-2245
Cox Communications	Bob Alley	262-4270
	Mark Anyo	262-4270
5. All lawn/turf areas disturbed by construction of proposed improvements shall be restored with sod. All sodding work shall be in accordance with the City of Wichita standard specifications and the City of Wichita administrative regulation No. 4R78 which governs cleanup and replacement following construction. All costs for this work shall be subsidiary to the lump sum price bid for "Site Restoration."
6. Traffic affected by the construction of this project shall be handled in accordance with the latest edition of the Manual on Uniform Traffic Control Devices.
7. All commercial signs to be moved by others prior to construction.
8. Properties within the project may have underground irrigation systems (lawn sprinklers) which conflict with new construction. Contractor shall remove such components as needed during construction of the project. The irrigation system shall be reinstated in like kind before project completion. Any irrigation system modifications required because of project improvements shall be coordinated with the property owner. Portions of underground irrigation systems not in conflict with new construction shall be protected from damage and shall remain in place. All work related to underground irrigations/sprinklers shall be subsidiary to Site Restoration.

St. Clair

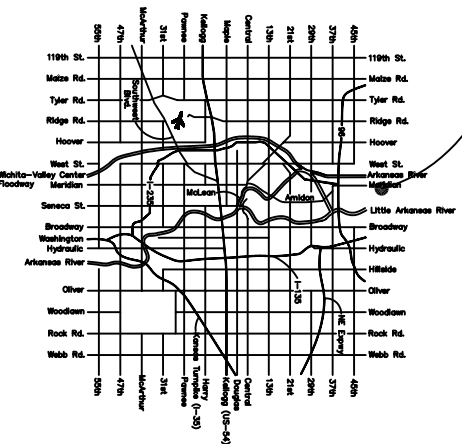
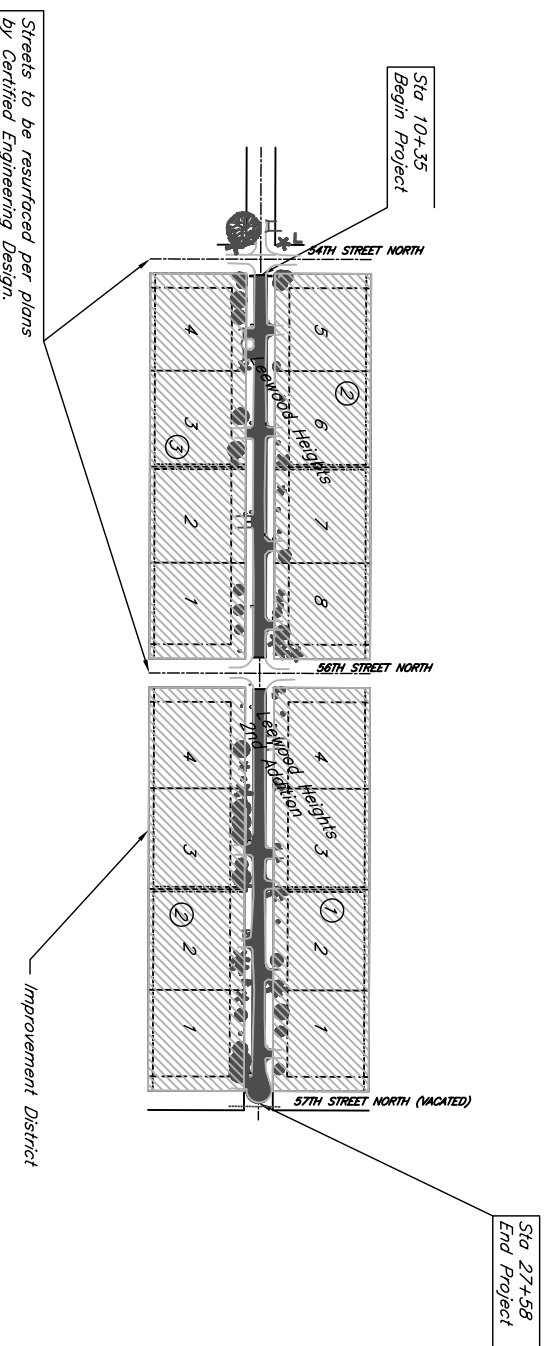
STREET IMPROVEMENTS

Project Number 472 83474

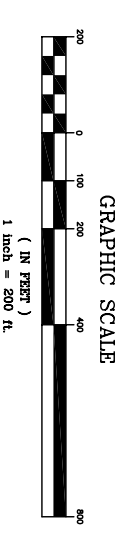
OCA NO.: 765717

CITY OF WICHITA, KANSAS

Neil Cable, P.E., City Engineer



CONTROL POINTS			
Station	Easting	Station	Offset
1	5000.00	10+30.30	30.06 Lt
2	4940.30	10000.00	9+70.60 29.90 Lt
3	4939.79	10059.90	9+70.25 30.00 Rt
4	4999.54	10060.06	10+30.00 30.00 Rt
261	5402.77	10001.61	16+33.14 30.03 Lt
281	5602.83	10001.61	14+32.67 30.03 Lt
318	5402.20	10061.26	18+32.66 30.00 Rt
342	5802.20	10062.17	18+32.66 30.00 Rt
348	5602.30	10061.60	16+32.77 29.96 Rt
443	5862.13	10062.41	18+92.60 30.07 Rt
517	5862.86	10002.47	18+93.17 29.87 Lt
540	6072.88	10003.09	21+03.17 29.90 Lt
567	6702.25	10064.95	27+32.73 30.01 Rt
597	6702.13	10004.93	27+32.43 30.01 Lt
606	6491.79	10064.23	25+22.27 29.94 Rt



516 S. Market,
Wichita, KS 67202

316/264-0242