
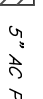

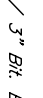


MATCH LINE
Sta 14+00

MATCH LINE
Sta 19+00

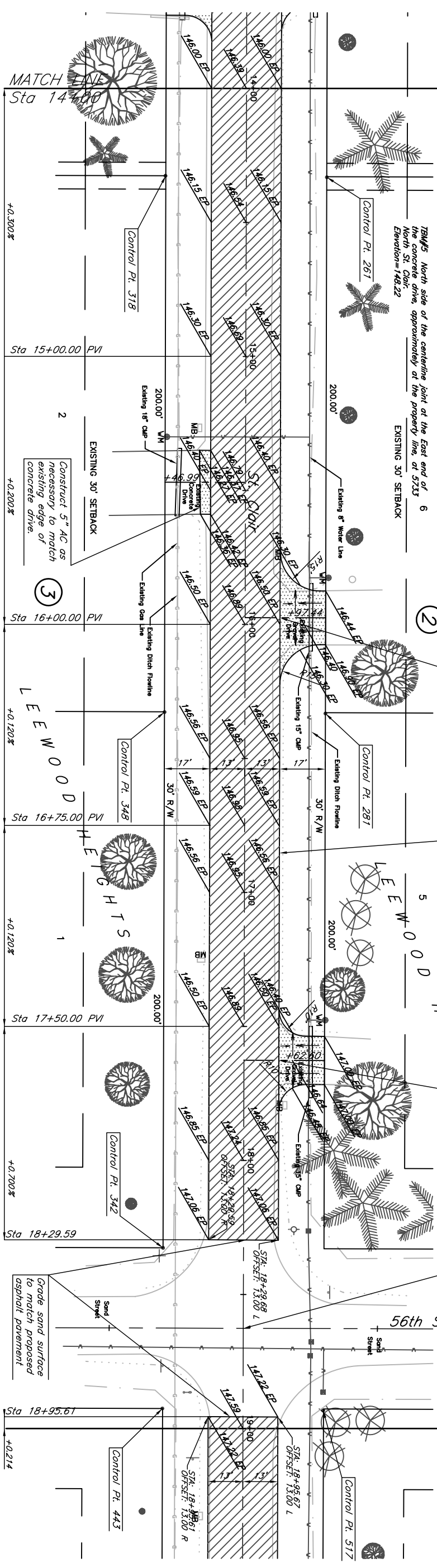
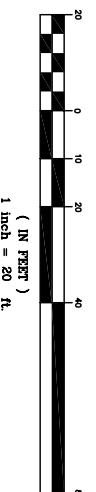
BENCHMARKS
 BM#1 City Disc on the walkway at the Northeast corner of the bridge over the Little Arkansas River and 53rd St. North, 1/4 mile West of Seneca.
 Elevation= 145.59 USGS Datum
 BM#2 " " cut on the top of curb at the West end of the Northwest return at the intersection of St. Clair and 53rd St. North.
 Elevation=144.49
 BM#3 " " cut on the top of the South end of a 15" RCP, 10' West end, 12' North of the Southwest corner iron at St. Clair and 34th Street North.
 Elevation=145.41
 BM#4 Northeast corner of the North headwell on the North side of the driveway at 5701 N. St. Clair.
 Elevation=147.79

-  5" AC Pavement w/ 3" Bit. Base
-  Pavement Removal
-  5" AC Drive Entrance Pavement
-  Street Taper (See Sheet 2)

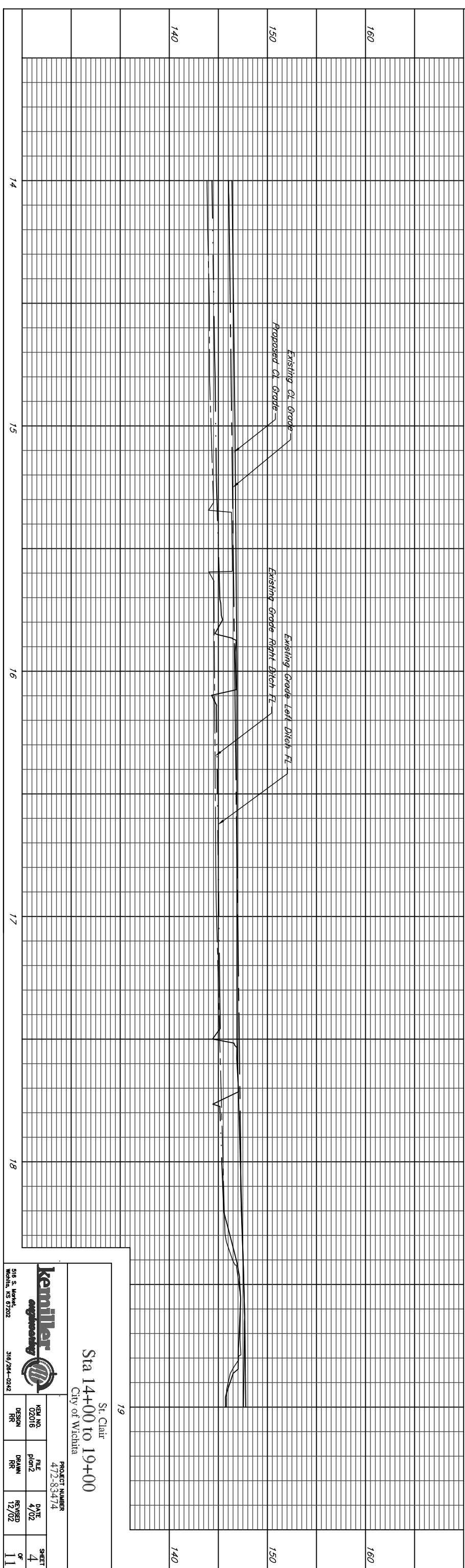
Construct 20.00' 5" AC drive entrance (see sheet 2)

Construct 18.00' 5" AC drive entrance (see sheet 2)

Sta 18+62.68 @ St. Clair=
 N=5832.29
 E=10032.25



140
150
160
170
180
190



Kemler
 engineering

516 S. Market
 Wichita, KS 67202
 316/264-0242

PROJECT NUMBER
 472-83474

St. Clair
 Sta 14+00 to 19+00
 City of Wichita

REV. NO.	DATE	BY	CHKD.
02/06	4/02	RR	RR
DESIGN	RR	RR	RR
REVISION	12/02		

SHEET 4 OF 11