

BENCHMARKS

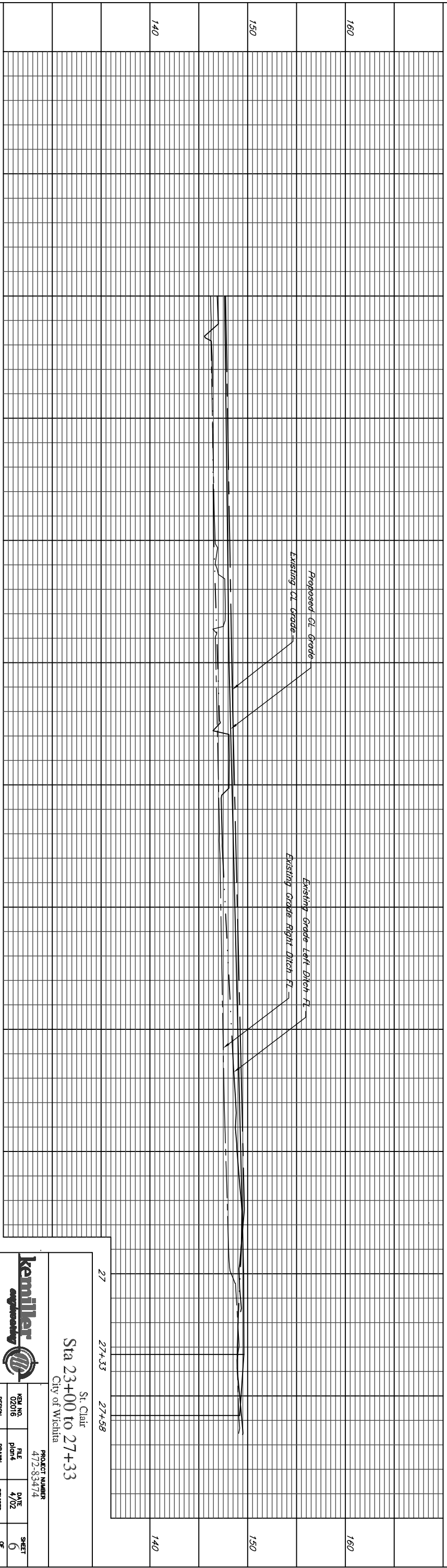
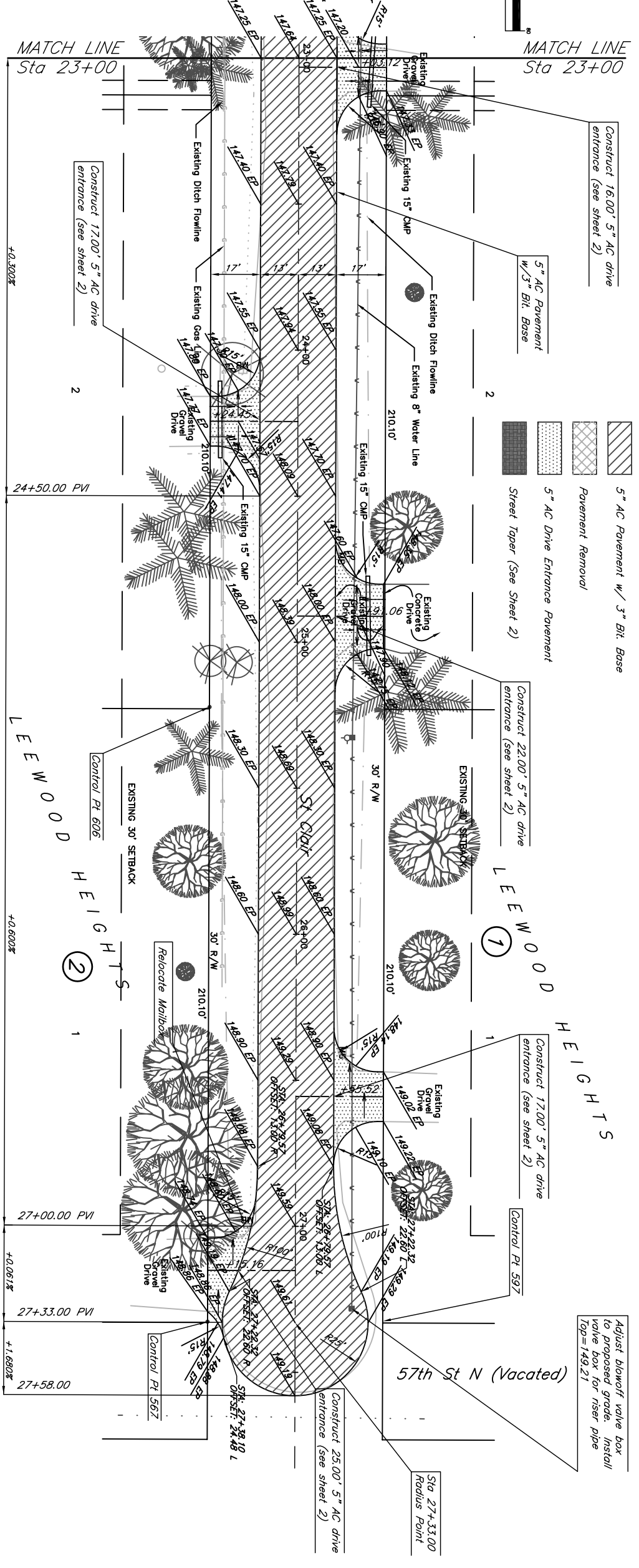
BM#1 City Disc on the walkway of the Northeast corner of the bridge over the Little Arkansas River and 53rd St. North, 1/4 mile West of Seneca. Elevation=145.59

BM#2 " " cut on the top of curb at the West end of the Northwest return of the intersection of St. Clair and 53rd St. North. Elevation=144.49

BM#3 " " cut on the top of the South end of a 15" RCP, 10' West and 12' North of the Southwest corner iron of St. Clair and 54th Street North. Elevation=145.41

BM#4 Northeast corner of the North headwall on the North side of the driveway at 5701 N. St. Clair. Elevation=147.79

BM#5 North side of the centerline joint at the East end of the concrete drive, approximately of the property line, at 5733 North St. Clair. Elevation=148.22



St. Clair
City of Wichita

Sta 23+00 to 27+33

	<p>PROJECT NUMBER 472-83474</p>
<p>REVISION 02/018</p>	<p>DATE 4/02</p>
<p>DESIGN RR</p>	<p>REVISION 10/02</p>
<p>FILE RR</p>	<p>SHEET 6 OF 11</p>

516 S. Maple
Wichita, KS 67202 316/784-0242