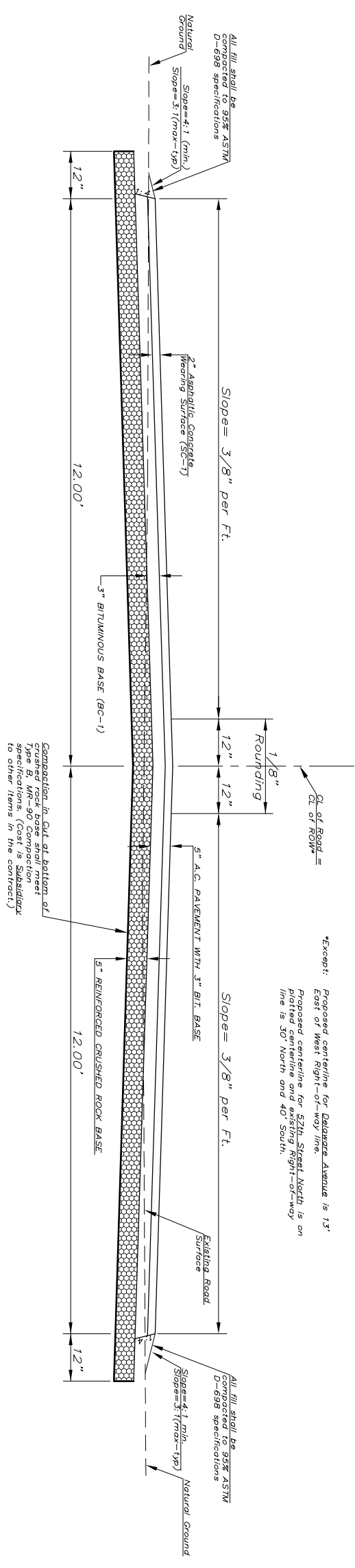
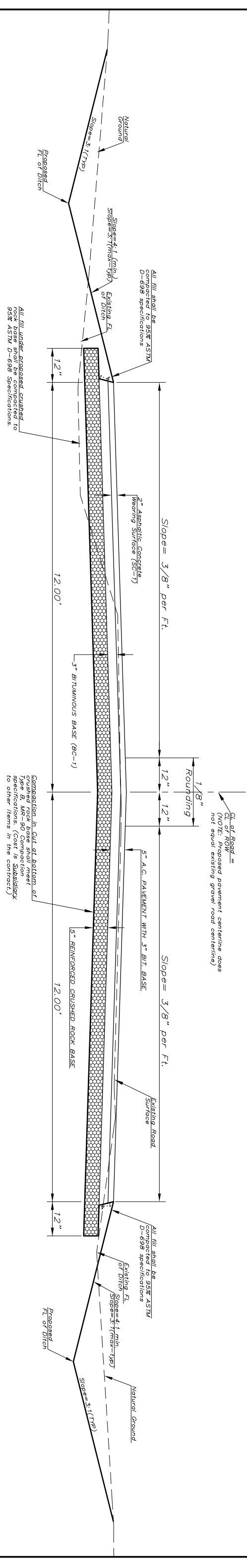


24' TYPICAL PAVEMENT DETAILS

TRANSVERSE SECTION



54TH STREET TYPICAL SECTION



General Notes

FABRIC BASE REINFORCEMENT SHALL BE B X 1100 GEORGRID AS MANUFACTURED BY TENSAR CORPORATION OR APPROVED EQUAL. FABRIC BASE REINFORCEMENT SHALL BE INSTALLED IN ACCORDANCE WITH THE TENSAR GEORGRID INSTALLATION MANUAL. FABRIC BASE SHALL BE UNIFORMLY GRADED FROM 1-1/2" MAXIMUM SIZE TO NOT MORE THAN 10% PASSING A NO. 200 SIEVE. ROCK QUALITY SHALL BE THE SAME AS SPECIFIED FOR COARSE AGGREGATE FOR CONCRETE MIXES. ROCK BASE IS TO BE COMPACTED AND SMOOTHEd WITH A STEEL FACED ROLLER PRIOR TO PLACEMENT OF ASPHALT. TACK COAT WILL NOT BE APPLIED TO ROCK BASE.

A TACK COAT OF EMULSIFIED ASPHALT (SC-1H OR CSS-1H) SHALL BE APPLIED AT AN APPROXIMATE RATE OF 0.05 GALLONS PER SQUARE YARD BETWEEN EACH LIFT OF ASPHALTIC MATERIAL.

BITUMINOUS BASE AND ASPHALTIC CONCRETE WEARING SURFACE SHALL BE PLACED WITH A LAYDOWN MACHINE HAVING AUTOMATIC CONTROLS FOR LINE AND GRADE.

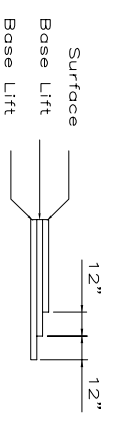
CONSTRUCTION JOINTS IN EACH LIFT SHALL BE STAGGERED A MINIMUM DISTANCE OF ONE (1) FOOT FROM JOINTS IN PRECEDING LIFTS AND PLACED SO THAT A JOINT WILL BE CONSTRUCTED ON THE CENTERLINE OF THE TOP LIFT. THE ASPHALTIC CONCRETE PAVEMENT BETWEEN THE COMBINED CURB AND GUTTER SHALL BE PAID AS SQUARE YARDS OF 5" ASPHALTIC CONCRETE (3" BITUMINOUS BASE).

CRUSHED ROCK GRADATION REQUIREMENTS

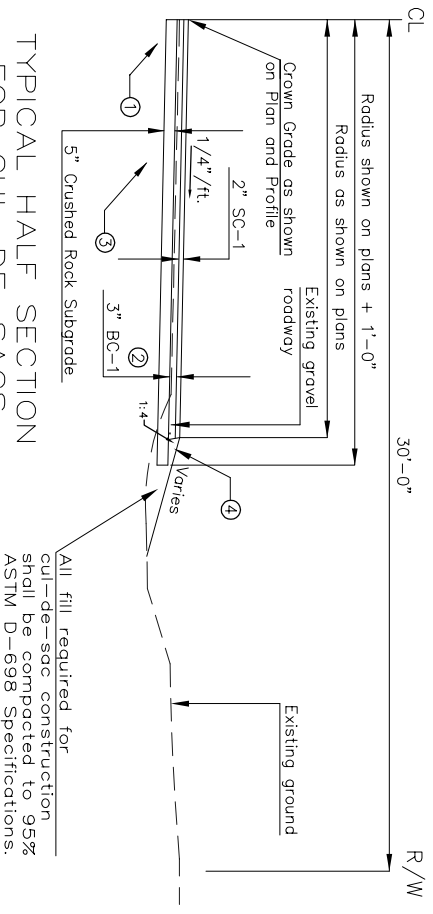
Percent of Aggregate Retained	
1 1/2"	0
3/4"	15-60
# 4	40-80
#40	74-92
P-200	4-12

Rock Quality Shall Be The Same As Specified For Coarse Aggregate For Asphalt Concrete Mixes.

TRANSVERSE JOINTS CONSTRUCTION



TYPICAL HALF SECTION FOR CUL-DE-SACS



- TYPE B, MR-90 COMPACTION REQUIRED BELOW 5" CRUSHED ROCK SUBGRADE SECTION.
- TO BE CONSTRUCTED IN TWO (2) LIFTS.
- IF UNSUITABLE MATERIAL IS ENCOUNTERED, IT SHALL BE EXCAVATED AS DIRECTED BY THE ENGINEER AND REPLACED WITH SELECT MATERIAL. THE SELECT MATERIAL SHALL HAVE COMPACTION REQUIREMENTS OF TYPE B, MR-90. THIS WORK SHALL BE SUBSIDIARY TO "OTHER ITEMS IN THE CONTRACT".
- THIS AREA TO BE BACKFILLED WITH TOPSOIL, COMPACTED AND SEEDED UPON COMPLETION OF PAVING. COST IS SUBSIDIARY TO "OTHER ITEMS IN THE CONTRACT".

TYPICAL PAVEMENT DETAIL

CITY OF WICHITA
 SIRD & MERIDIAN
 CED PROJ. NO.: 20020917
CERTIFIED ENGINEERING DESIGN, P.A.
 CED
 810 WEST DOUGLAS, SUITE C
 WICHITA, KANSAS 67203
 PH.(316)262-8808 FAX.(316)262-1888
 DESIGNED: HOF
 DRAWN: HOF
 DATE: 12/02
 SCALE: NTS
 SHEET 3
 CHECKED: HOF
 TOTAL 74