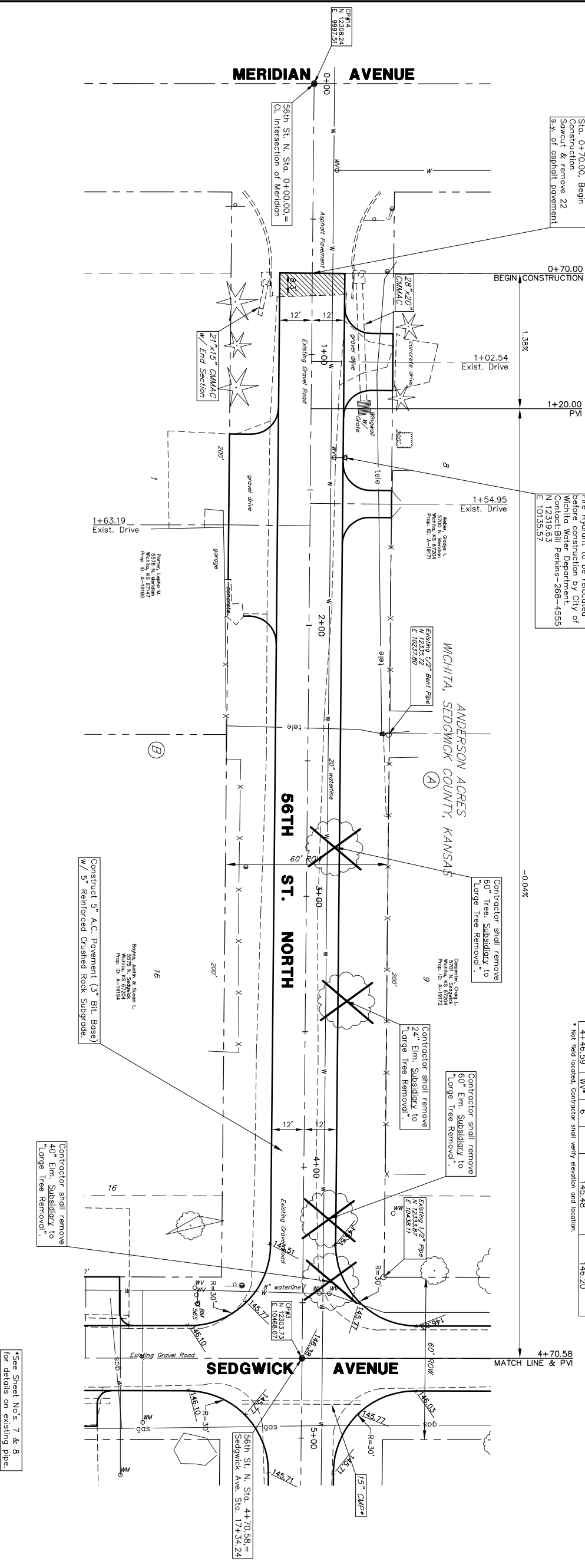


Sta. 0+70.00, Begin Construction
Sawcut & remove 22' S.W. of asphalt pavement.

Sta. 1+37.95, 12.71' Lt. Fire Hydrant to be relocated before construction by City of Wichita Water Department, Contract No. 12319.811
N 12319.811
E 10135.57

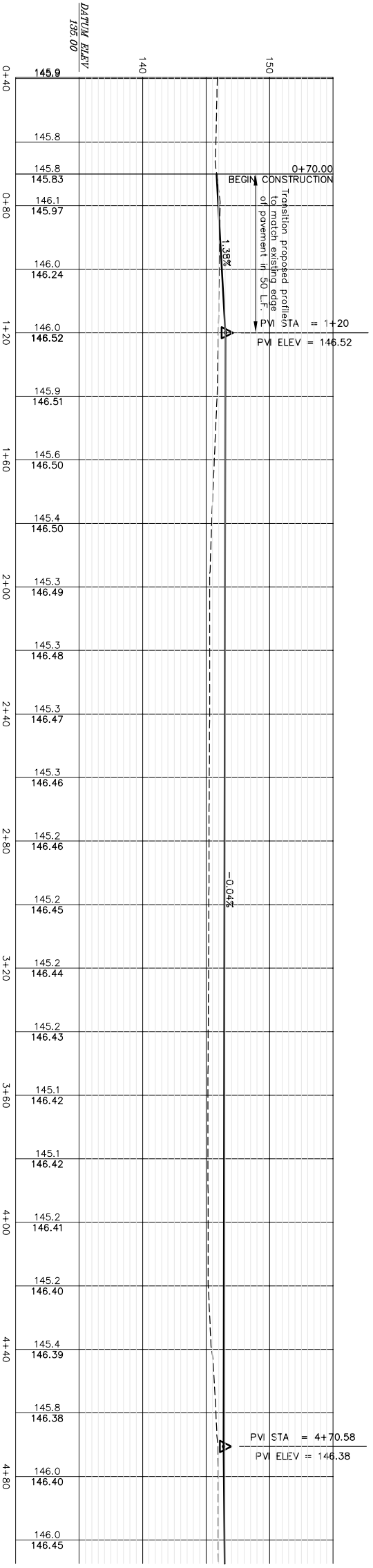
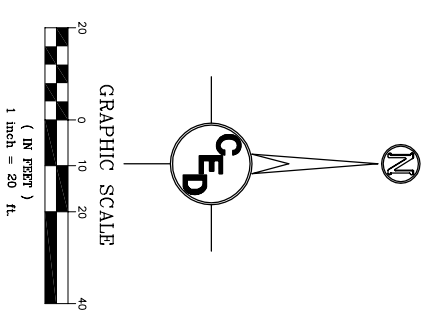
Sta.	Desc.	Lt.	Rt.	Exist. Top Elev.	Prop. Top Elev.
1+37.98	WW	8.5'		145.65	146.24
4+46.59	WW*	9.85'		145.42	146.08
4+46.59	WW*	6'		145.48	146.20

* Not field located. Contractor shall verify elevation and location.



*See Sheet No's. 7 & 8 for details on existing pipe.

UTILITIES SHOWN REPRESENT THE BEST INFORMATION AVAILABLE FOR DESIGN. ADDITIONAL UTILITIES MAY BE PRESENT ON THIS PROJECT. THE CONTRACTOR SHALL BE RESPONSIBLE FOR DETERMINING THE EXACT LOCATION, DEPTH AND CHARACTERISTICS OF ALL UTILITIES. THE CONTRACTOR SHALL BE LIABLE FOR ANY DAMAGE CAUSED BY THE FAILURE TO DO SO.



SURVEY DISCLAIMER: USED IN PREPARING PLANS WAS PROVIDED BY GARBER SURVEYING SERVICE, (620) 666-7022, 423 WEST 12TH AVENUE, WICHITA, KANSAS 67202. THE SURVEY ELEVATIONS FOR ACCURACY CONTRACTOR SHALL VERIFY ELEVATIONS AND NOTIFY ENGINEER OF ANY DISCREPANCIES.

STREET PAVING PLAN FOR
56TH STREET NORTH
WICHITA, SEDGWICK CO., KANSAS
CED PROJ. NO.: 20020917

CERTIFIED ENGINEERING DESIGN, P.A.
810 WEST DOUGLAS, SUITE C
WICHITA, KANSAS 67203
PH. (316) 262-8808 FAX. (316) 262-1669
SCALE: 1"=20'
DATE: 12/02

DESIGNED: HDF
DRAWN: OKW
CHECKED: HDF

SHEET 26
TOTAL 74

	CB	Flag Pole	
	WW	SS Manhole	
	SH	SMS Manhole	
	WM	Sign	
	WV	Fire Hydrant	
	GM	Misc. Post	
	GV	Power Pole	
	TR	Light Pole	
	SC	Mailbox	
	RS		