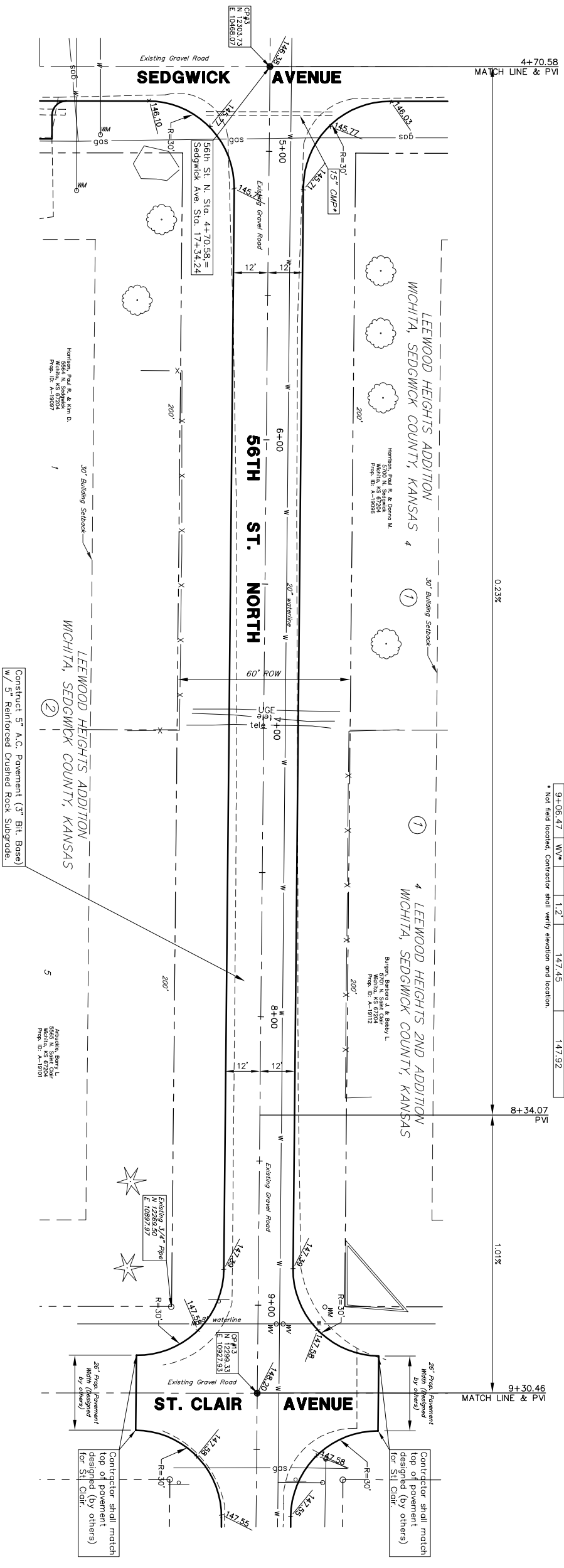
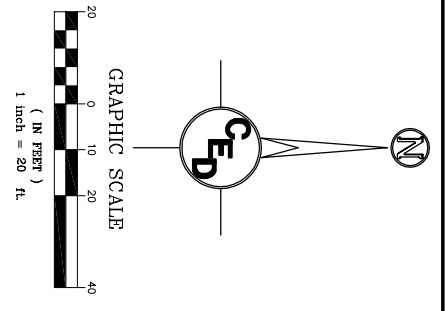
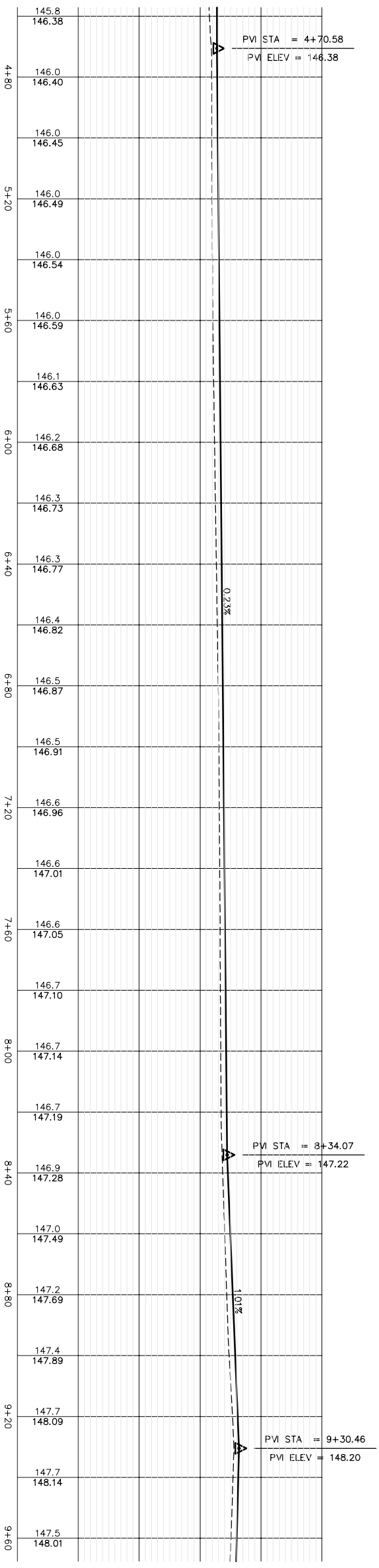


Sta.	Desc.	Lt.	Rt.	Exist. Top Elev.	Prop. Top Elev.
9+06.47	WV*	1.2'		147.43	147.92
9+06.47	WV*	1.2'		147.45	147.92

\* Not field located. Contractor shall verify elevation and location.



\*See Sheet No's. 7 & 8 for details on existing pipe.



UTILITIES SHOWN REPRESENT THE BEST INFORMATION AVAILABLE FOR DESIGN. ADDITIONAL UTILITIES MAY BE PRESENT ON THIS PROJECT. THE CONTRACTOR SHALL BE RESPONSIBLE FOR THE SIZE OF ALL UNDERGROUND UTILITIES PRIOR TO CONSTRUCTION. THE CONTRACTOR SHALL BE LIABLE FOR ANY DAMAGE CAUSED BY THE FAILURE TO DO SO.

	Flag Pole		SS Manhole
	Water Wall		SMS Manhole
	Sprinkler Head		Sign
	Water Meter		Fire Hydrant
	Water Valve		Misc. Post
	Gas Meter		Guy Anchor
	Gas Valve		Light Pole
	Telephone Risers		Mailbox
	Section Corner		
	Deciduous Tree or Shrub		
	Coniferous Tree		
	Existing Fence		
	Property Line		
	Underground Telephone		
	Underground Electric		
	Overhead Electric		
	Water Line		
	Sanitary Sewer		
	Gas Line		
	Cable TV or Fiber Optic		

**SURVEY DISCLAIMER**  
 TOPOGRAPHIC SURVEY USED IN PREPARING PLANS WAS PROVIDED BY GARBER SURVEYING SERVICE, (620) 663-7032, 423 WEST FIRST AVE., HUTCHINSON, KANSAS. CED ENGINEERING DESIGN DOES NOT GUARANTEE SURVEY ACCURACY. CED ENGINEERING DESIGN DOES NOT GUARANTEE ELEVATIONS AND NOTIFY ENGINEER OF ANY DISCREPANCIES.

STREET PAVING PLAN FOR  
**56TH STREET NORTH**  
 WICHITA, SEDGWICK CO., KANSAS  
 CED PROJ. NO.: 20020917

**CERTIFIED ENGINEERING DESIGN, P.A.**  
 810 WEST DOUGLAS, SUITE C  
 WICHITA, KANSAS 67203  
 PH. (316) 262-8808 FAX. (316) 262-1699

DESIGNED: HOF  
 DRAWN: OKW  
 DATE: 12/02  
 SCALE: 1"=20'  
 SHEET: 27  
 CHECKED: HOF  
 CED FILE: 53-d&w-d-Base TOTAL 74