

AS BUILT PLANS

Contractor: McCullough Excavating
 Inspector: Don Eddingfield, Baughman Co.
 pdf's by: KEK, 11/17/14

STORMWATER DRAIN IMPROVEMENTS

to serve

Steven Chrysler Jeep Dodge

Lot 2, J Robert Dry Addition & Lot 2 Doonan Plaza II Addition

Private Project Drainage: 0266 PPD (607861)

CITY OF WICHITA, KANSAS

Gary Janzen, P.E. - City Engineer
 August 2014

GENERAL NOTES:

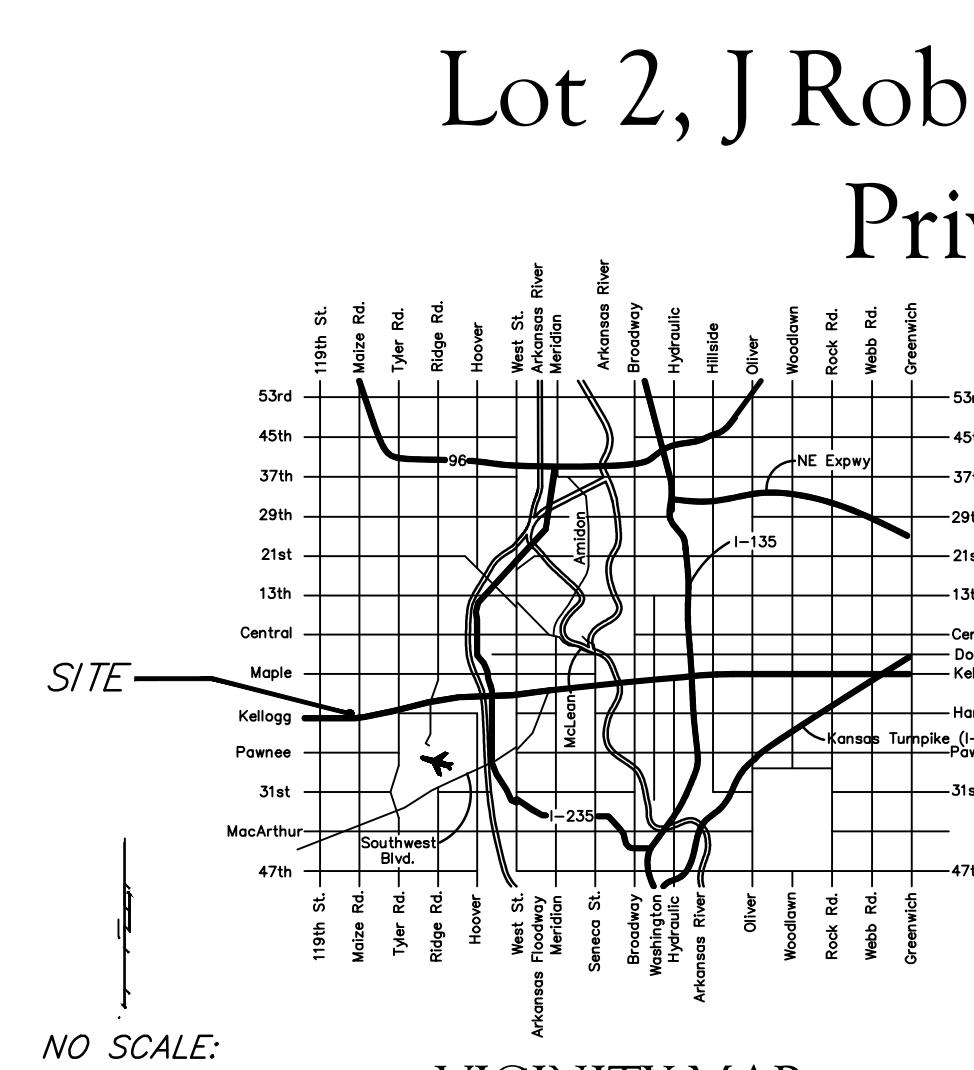
- Contractor will be required to provide notice to utility companies a minimum of forty-eight (48) hours prior to any excavation, as follows:
 Kansas One-Call 687-2470
 The Contractor must notify the following in case of an emergency:
 Cox Communications 262-4270
 Kansas Gas Service 1-888-482-4950
 Westar Energy 383-8650
 Black Hills Energy (Gas) 1-800-303-0357
 ATT 268-2245
 City of Wichita Water Dept. 268-4563
 City of Wichita Sewer Maint. 268-4024
 City of Wichita Storm Sewer Maint. 268-4090
 City of Wichita Traffic Maint. 268-4034
- Utility service lines, poles, valve boxes, meters, and etcetera are to be adjusted as necessary by others prior to construction unless the plans specifically call for their adjustment by the Contractor or unless the plans specifically identify a utility to be adjusted by its owner during construction. Existing utilities and their location, as shown on the plans, represent the best information obtainable for design. The Contractor will be required to work around existing utilities within the right-of-way which do not conflict with proposed construction.
- All disturbed R/W areas not intended for pavement or sidewalk construction shall be seeded with Kansas Premium Fescue Blend at a rate of 8 lb./1000 Sq. Ft., fertilized with a 16-20-6 ratio at a rate of 4 lb./1000 Sq. Ft., and mulched with Prairie Hay at a rate of 92 lb./1000 Sq. Ft. Mulch shall be "patted" with forks or punched into soil to reduce loss due to wind.
- Rubble from the removal of miscellaneous structures and excess excavation which is to be wasted shall be disposed of on sites to be provided by the Contractor. These sites shall be approved by the Engineer as to suitability, appearance and site location. Locations, in the opinion of the Engineer, that will leave an unsightly appearance will not be approved. All disposal sites must be approved by the Kansas Department of Health and Environment. Material either stockpiled or disposed of in a flood plain would require a Kansas State Board of Agriculture permit. Any material dumped in waters of the United States or wetlands is subject to U.S. Corps. of Engineers permitting regulations. Any material buried or stockpiled beyond approved construction limits would require additional archaeological investigations unless buried in a previously approved borrow location.
- Contractor shall furnish the inspector with a copy of the manufacturer's certification for any pipe used on this project after completion of pipe installation. The engineer will not certify the project to the city until pipe certification has been received.
- Trees and shrubs in public right-of-way which are in direct conflict with proposed new construction shall be removed by the Contractor with the Engineer's approval. Trees and shrubs which are not in direct conflict with proposed new construction shall be saved and protected from damage.
- All sewer lines and appurtenances shall be installed in accordance with the most recent edition of City of Wichita, Kansas Standard Specifications for the Construction of City Projects.
- Contractor shall not start work on the project until the project inspector is assigned to the project and is present on the site. Contractor shall not start on the project until all necessary bonds and permits have been obtained. Bonds may include but are not limited to Statutory, Performance & Maintenance. Any work done without inspection will be required to be uncovered for inspection.
- Stormsewer line 1 will be a private system. Maintenance and inspection will be the owners responsibility, see the O&M manual developed for this system.

Storm Water Certification

This improvements were prepared in accordance with the current Storm Water Management Regulations as set forth in the City of Wichita's Storm Water Management Ordinance 16.32 and the policies/guidelines presented in the Wichita/Sedgwick County Storm Water Manual.

Drainage Area: 2.14 acres
 WQV = 8,370 cubic feet.

Downstream Channel Protection The improvements do not exceed 5.0 acres of disturbed area. Subject to the size of this improvement, Downstream Channel Protection is not required.
Water Quality Requirements will be address with the Installation of an HG4 Water Quality Device, routed via a Trench Drain.



VICINITY MAP

BENCHMARKS

SITE BENCHMARK-1
 Chiseled square in top of curb along Harry Drive on East side of entrance drive
 Elevation=1330.95 (NAVD 88)

Site ERU Information

Total Lot Area: 417,172 sq. ft.
 Disturbed Area: ±93,342 sq. ft.
 Impervious Area (this Project): ±90,575 sq. ft.
 Pavement Replaced (included in Impervious Area): 5,803 sq. ft.

SHEET INDEX:

Title Sheet	1
Line 1	2
Reference Grading Plan	3
Reference BMP Plan	4
Plats	5

Details available upon at City of Wichita web site or by request.

APPROVED AS NOTED
 BY CITY ENGINEER OF WICHITA

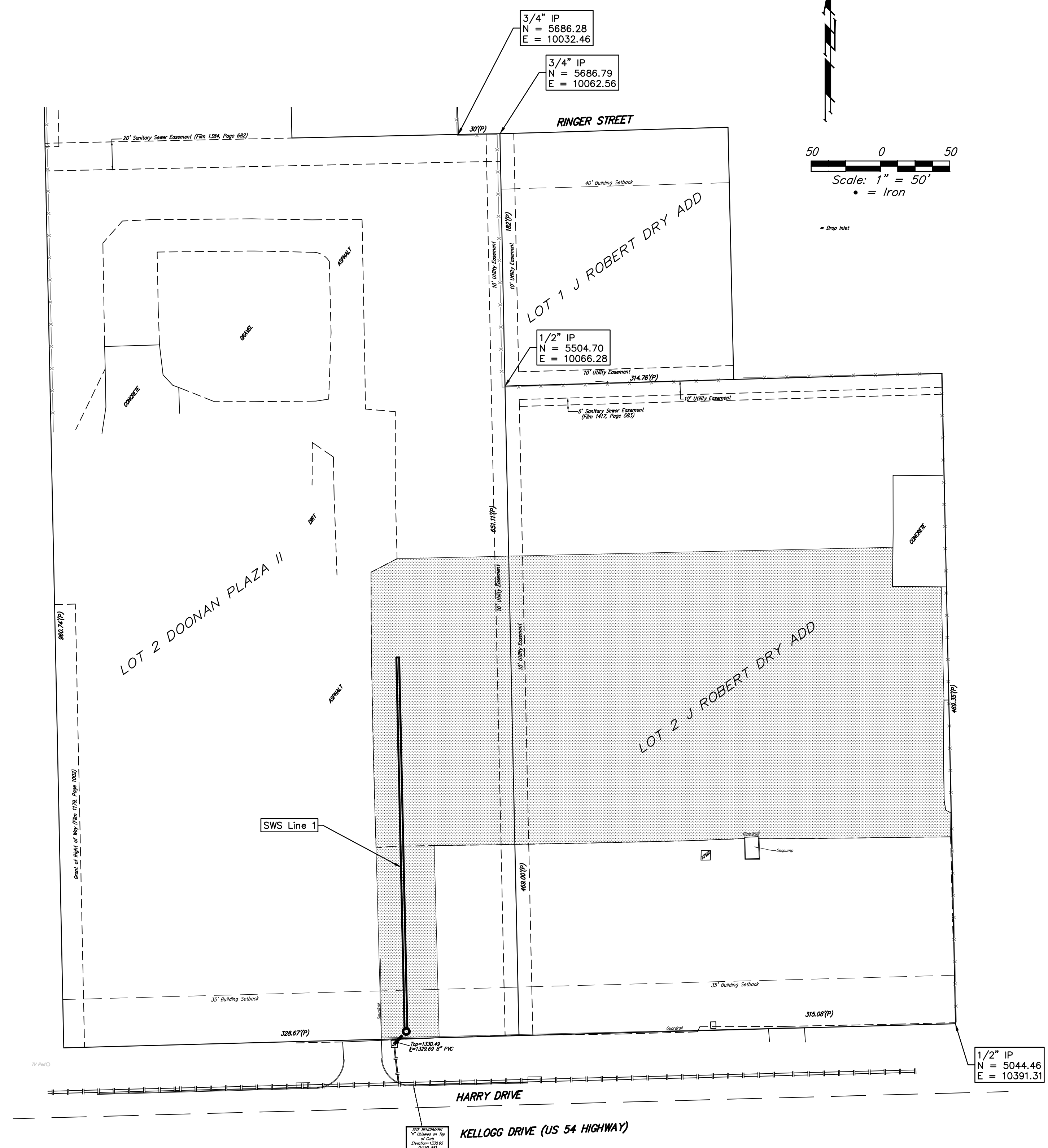
Engineering *Rebecca Grail* 8/26/14
 Stormwater *Jim Handberg* 8/26/14

NOTE TO CONTRACTORS

Installation, inspection and testing for this project is to be provided by a Licensed Consulting Engineering Firm under contract with the Owner/Developer. Said inspection to be in accordance with the City of Wichita standard construction engineering practices and certified by a Licensed Professional Engineer. No work shall be performed in dedicated easements or public right-of-way by the Contractor without such inspection nor shall any work be commenced without written authorization by the City Engineer. All Construction and Materials shall comply with the City of Wichita Specifications and Standards (on file and available in the City Engineer's Office).



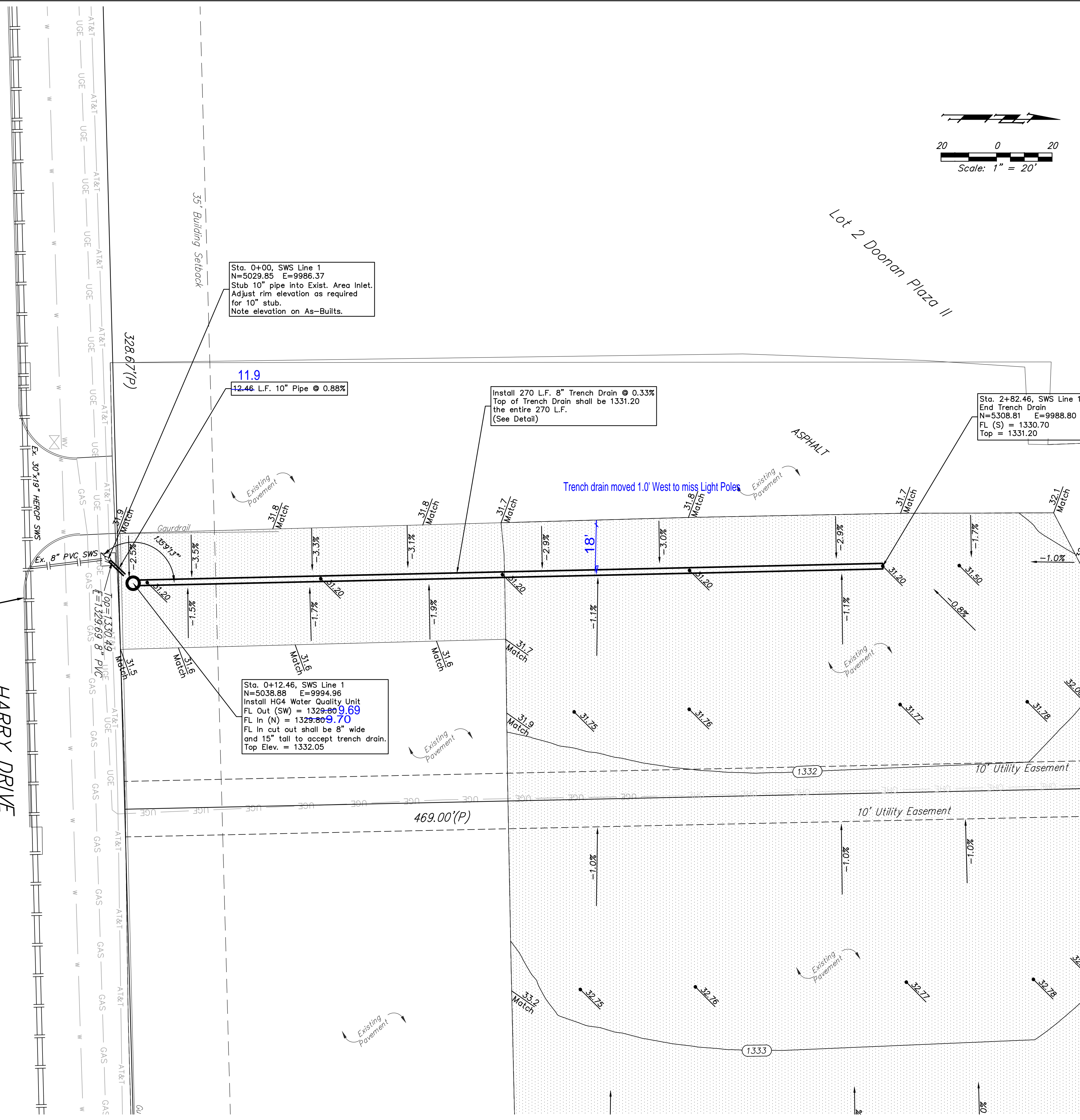
Baughman Company, P.A. 315 Ellis St. Wichita, KS 67211 P 316-263-7271 F 316-263-0149
 ENGINEERING | SURVEYING | PLANNING | LANDSCAPE ARCHITECTURE



SITE BENCHMARK
Checked on Top
Elev. = 1330.95
(NAVD 89)

KELLOGG DRIVE (US 54 HIGHWAY)

HARRY DRIVE



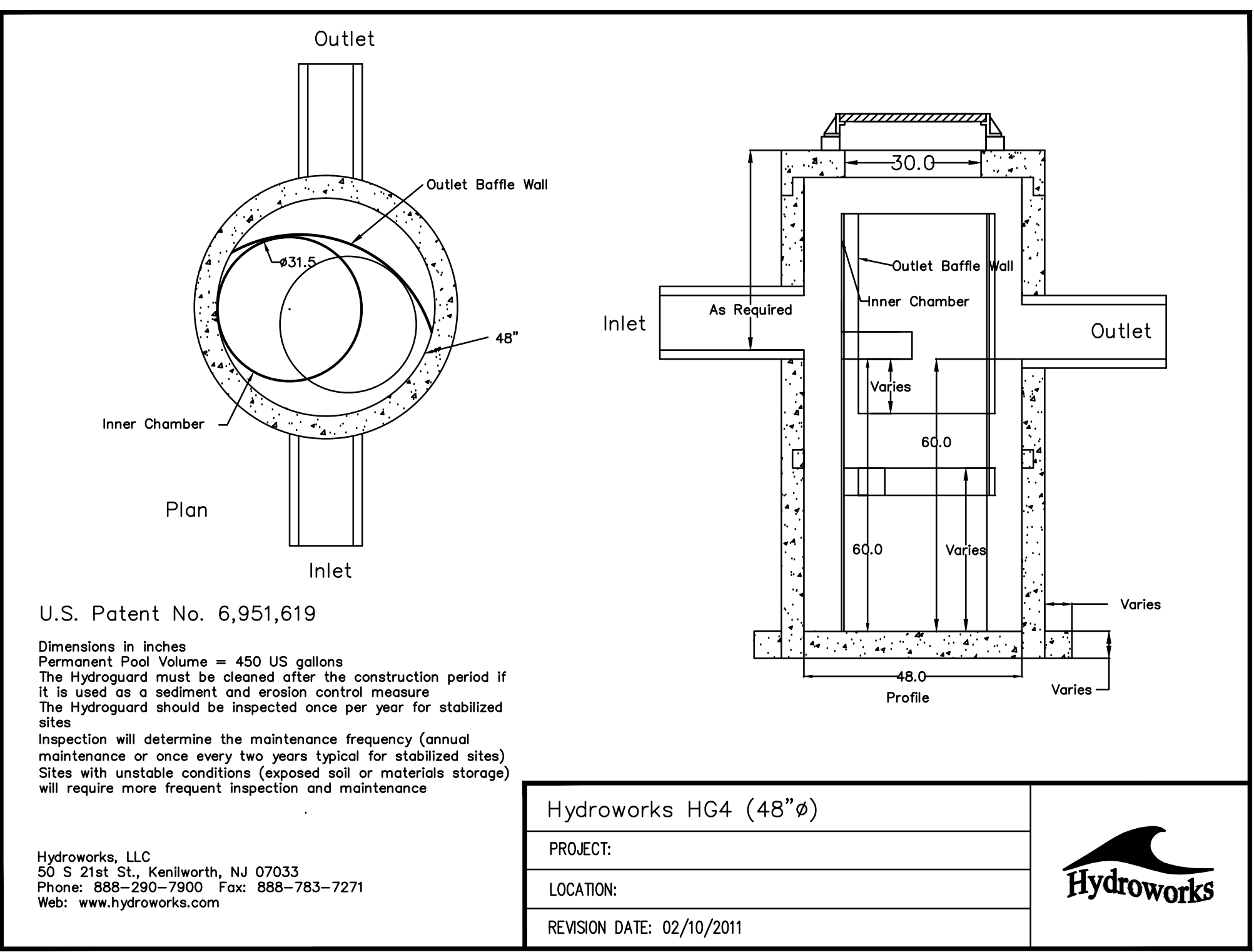
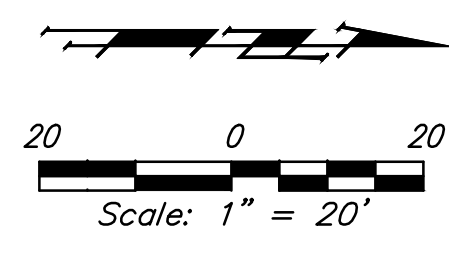
Sta. 0+00, SWS Line 1
N=5029.85 E=9986.37
Stub 10" pipe into Exist. Area Inlet.
Adjust rim elevation as required
for 10" stub.
Note elevation on As-Builts.

11.9
42.46 L.F. 10" Pipe @ 0.88%

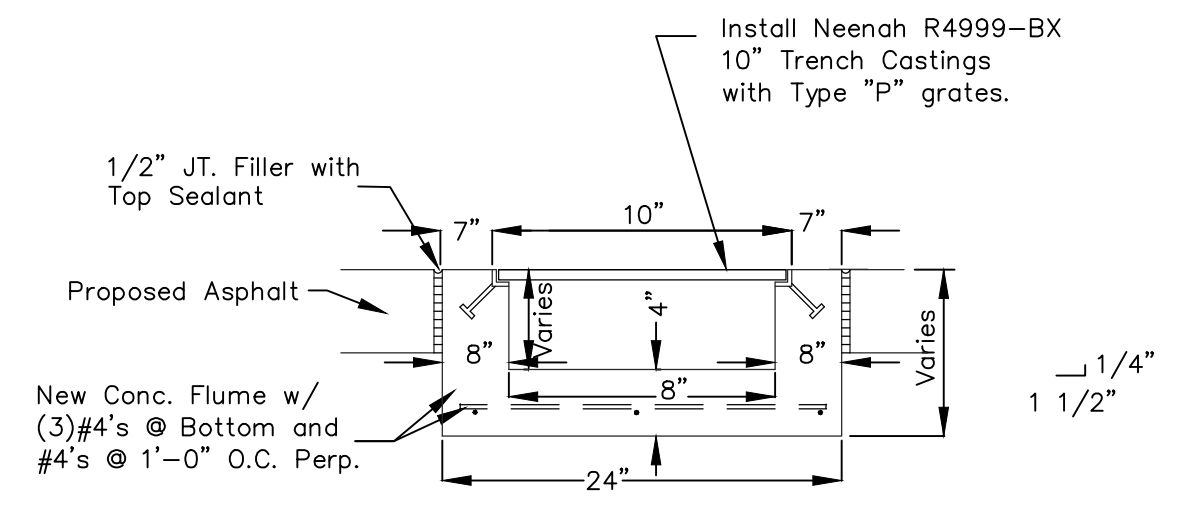
Install 270 L.F. 8" Trench Drain @ 0.33%
Top of Trench Drain shall be 1331.20
the entire 270 L.F.
(See Detail)

Sta. 2+82.46, SWS Line 1
End Trench Drain
N=5308.81 E=9988.80
FL (S) = 1330.70
Top = 1331.20

Sta. 0+12.46, SWS Line 1
N=5038.88 E=9994.96
Install HG4 Water Quality Unit
FL Out (SW) = 1329.80 **9.69**
FL In (N) = 1329.80 **9.70**
FL in cut out shall be 8" wide
and 15" tall to accept trench drain.
Top Elev. = 1332.05



2 HYDROWORKS HG4 DETAIL
NOT TO SCALE



1 CONCRETE FLUME W/ STEEL GRATE COVER
NOT TO SCALE

Steven Chrysler, P.E.
Baughman Company, P.A.
Baughman
Professional Engineer

LINE 1
Storm Water Drain Improvements

