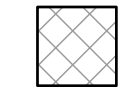

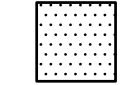
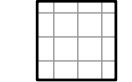
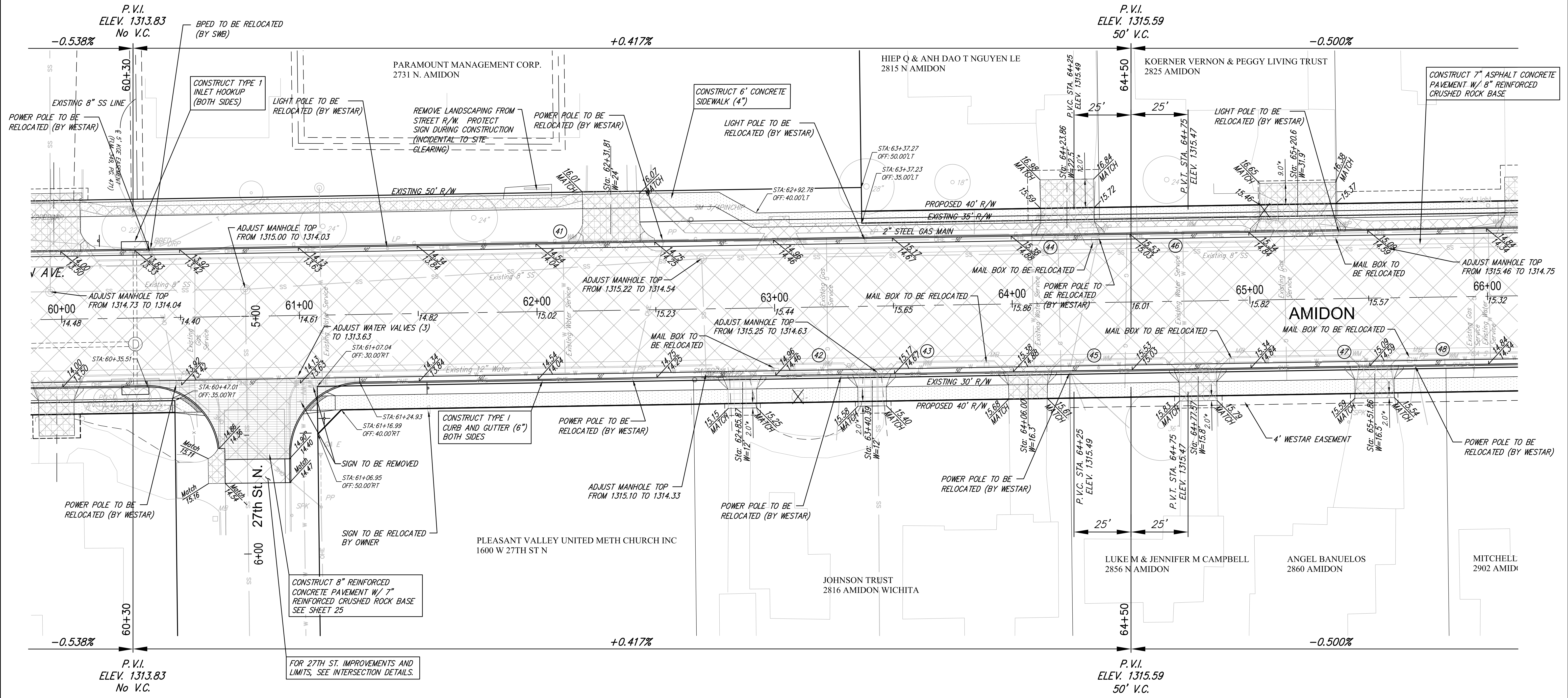
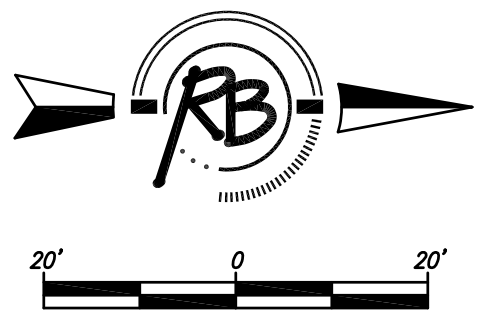


STORM WATER PLANS FOUND ON SHEETS 26 TO 38.

**LEGEND**

-  Pavement to be removed
-  Concrete Construction 8" Reinforced  
Crushed Stone Subgrade (7") - Geogrid Reinforcement (for base)
-  Concrete Sidewalk (4" or 5" see plan note)
-  Concrete Driveway Pavement (6")(Unreinf.)

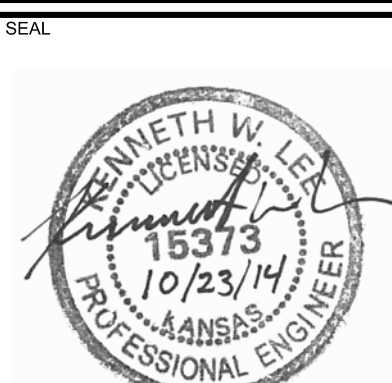


**Water Meter Relocation/Adjustment**

No	Existing Location	As-Built Location	Notes
41	62+11, Lt		Relocate Meter
42	63+16, Rt		Replace Entire Service Except Corporation
43	63+60, Rt		Replace Entire Service Except Corporation
44	64+08, Lt		Adjust Meter Box
45	64+35, Rt		Relocate Meter
46	64+72, Lt		Relocate Meter
47	65+40, Rt		Relocate Meter
48	65+81, Rt		Replace Entire Service Except Corporation

(XX) - WATER METER TO BE RELOCATED OR ADJUSTED (SEE TABLE)  
5.0' - DISTANCE FROM R/W TO MATCH POINT ON DRIVEWAYS

**AMIDON - 21ST TO 29TH PAVING IMPROVEMENTS**  
AMIDON - 60+00 TO 66+00  
WICHITA, KANSAS

	<b>RUGGLES &amp; BOHM</b>	DATE Oct. 23, 2014
	ENGINEERING   SURVEYING   LANDSCAPE ARCHITECTURE   GOVERNMENT 924 NORTH MAIN WICHITA, KANSAS 67203 P (316) 264-8008 F (316) 264-4621 WWW.RBKANSAS.COM	DESIGN KWL
PROJECT NUMBER 472-84914	RB JOB NO. 36471	DWG. SCALE 20
DRAWING FILE ENGINEERING BASE {Amidon 9}	SHEET <b>13</b> OF 133	REVIEW RA/DGZ