

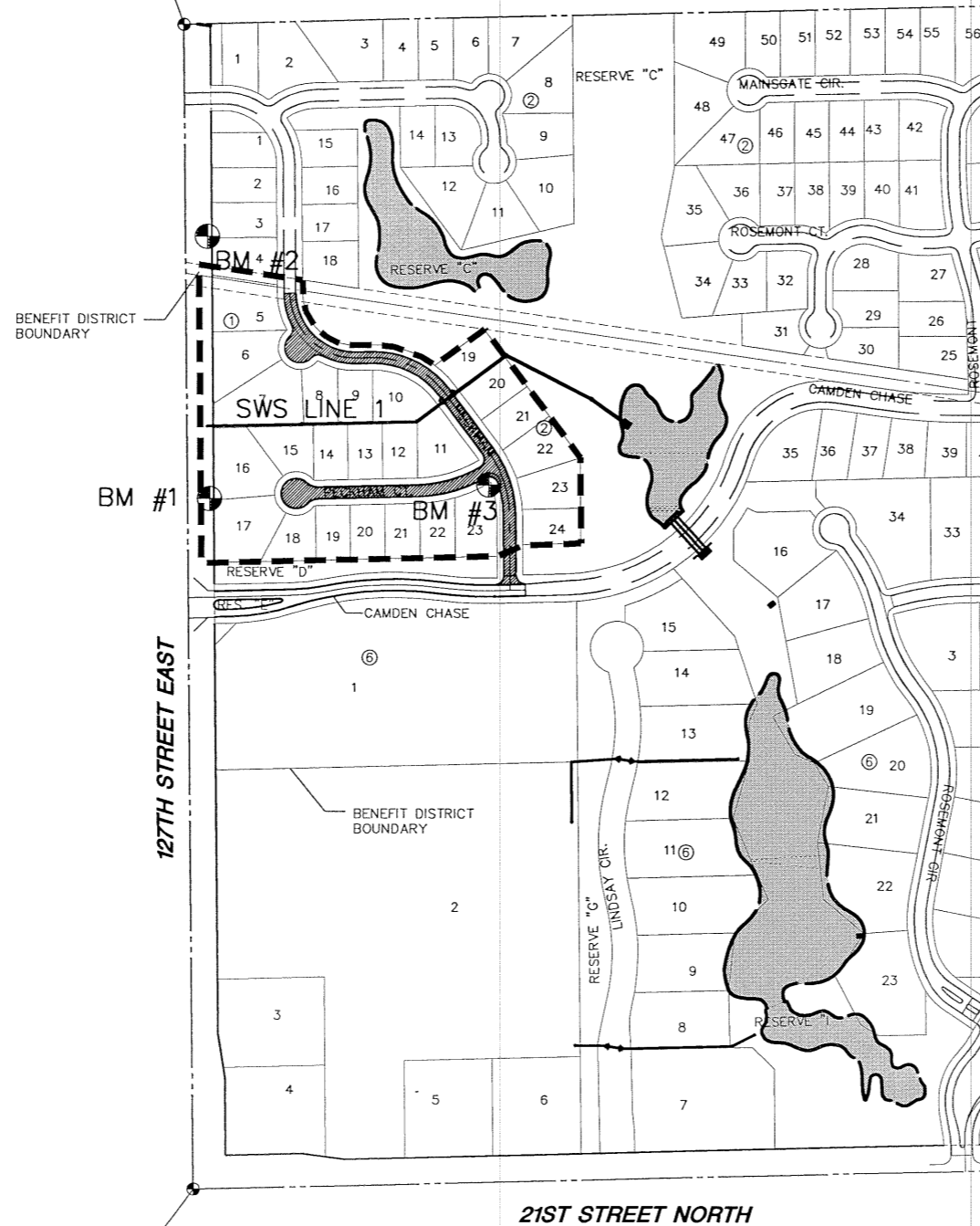
# PAVING STREETS AND INCIDENTAL DRAINAGE IN HAWTHORNE ADDITION

AN ADDITION TO THE CITY OF WICHITA  
SEDGWICK COUNTY, KANSAS  
**PECKHAM "A" PHASE**  
PROJECT NO. 472-83637

NEIL D. CABLE, CITY ENGINEER  
**OCA 765776**

Peckham from the North line of Camden Chase to  
the North line of Lot 5, block 1; Peckham Court,  
serving Lots 11 through 23, block 1, from the West  
line of Peckham to and including cul-de-sac

NW. COR., SW. 1/4 SEC. 2,  
T27S, R2E, 6TH P.M.,  
FND. 3/4" SOLID BAR OVER STONE



SW. COR., SW. 1/4 SEC. 2,  
T27S, R2E, 6TH P.M.,  
FND. 3/4" PIPE IN THIMBLE

## GENERAL NOTES

- UNLESS SHOWN OR STATED OTHERWISE ON THESE DRAWINGS, MATERIALS AND CONSTRUCTION SHALL BE IN ACCORDANCE WITH CITY OF WICHITA CONCRETE PAVEMENT AND ASPHALTIC CONCRETE PAVEMENT SPECIFICATIONS.
- THE CONTRACTOR SHALL BE RESPONSIBLE FOR PRESERVING PROPERTY IRONS. THE CONTRACTOR WILL BE REQUIRED TO RE-ESTABLISH ANY PROPERTY IRONS WHICH ARE DAMAGED OR DESTROYED BY HIS CONSTRUCTION OPERATIONS. SUCH IRONS SHALL BE RE-ESTABLISHED BY A LICENSED LAND SURVEYOR IN ACCORDANCE WITH STATE LAWS.
- TRANSITION CURB FROM FULL HEIGHT COMBINATION CURB AND GUTTER TO ROLL TYPE COMBINATION CURB AND GUTTER IS TO BE PAID AS BID FOR LINEAL FEET COMBINED CURB AND GUTTER (3 5/8" ROLL).
- EXISTING UTILITIES AND THEIR LOCATIONS, AS SHOWN ON THE PLANS REPRESENT THE BEST INFORMATION OBTAINABLE FOR DESIGN. LOCATION INFORMATION HAS BEEN OBTAINED FROM THE VARIOUS UTILITY COMPANIES AND IS EITHER FROM COMPANY RECORD DRAWINGS OR COMPANY PROVIDED FIELD LOCATIONS. THE PLAN LOCATIONS SHOWN ARE NOT GUARANTEED. ADDITIONAL EXISTING UTILITIES MAY ALSO BE ENCOUNTERED.
- CONTRACTOR WILL BE REQUIRED TO PROVIDE A MINIMUM ADVANCE NOTICE OF FORTY-EIGHT (48) HOURS TO UTILITY COMPANIES PRIOR TO STARTING ANY EXCAVATION AS FOLLOWS:

KANSAS ONE-CALL 1-800-344-7233  
OR 687-2470 (LOCAL WICHITA)

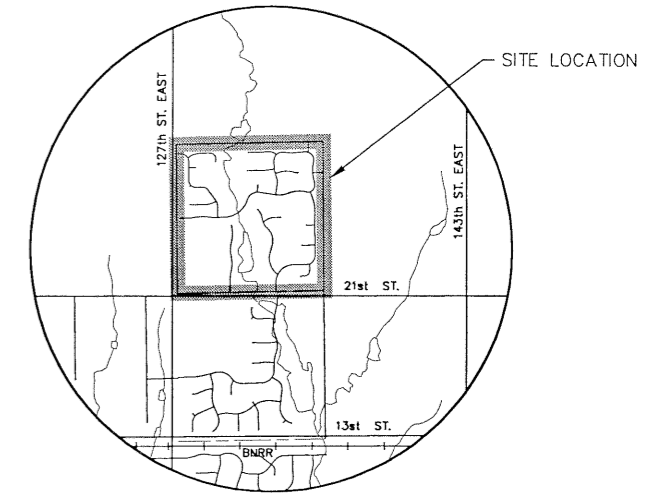
THE CONTRACTOR MUST NOTIFY THE FOLLOWING IN CASE OF AN EMERGENCY:

COX COMMUNICATION	263-0661
WESTAR ENERGY	261-6512
SBC	1-800-870-8390
CITY OF WICHITA WATER & SEWER	262-6000
COOPERATIVE REFINERY PIPELINE	1-800-982-4112
KANSAS GAS SERVICE	832-3101

- RUBBLE FROM THE REMOVAL OF MISCELLANEOUS STRUCTURES AND EXCESS EXCAVATION WHICH IS TO BE WASTED SHALL BE DISPOSED OF ON SITES TO BE PROVIDED BY THE CONTRACTOR. THESE SITES SHALL BE APPROVED BY THE ENGINEER AS TO SUITABILITY, APPEARANCE AND SITE LOCATION. LOCATIONS THAT, IN THE OPINION OF THE ENGINEER, WILL LEAVE AN UNSIGHTLY APPEARANCE WILL NOT BE APPROVED. ALL DISPOSAL SITES MUST BE APPROVED BY THE KANSAS DEPARTMENT OF HEALTH AND ENVIRONMENT. MATERIAL EITHER STOCKPILED OR DISPOSED OF IN A FLOOD PLAIN WOULD REQUIRE A KANSAS STATE BOARD OF AGRICULTURE PERMIT. ANY MATERIAL DUMPED IN WATERS OF THE UNITED STATES OR WETLANDS IS SUBJECT TO U.S. CORPS OF ENGINEERS PERMITTING REGULATIONS. ANY MATERIAL BURIED OR STOCKPILED BEYOND APPROVED CONSTRUCTION LIMITS WOULD REQUIRE ADDITIONAL ARCHAEOLOGICAL INVESTIGATIONS UNLESS BURIED IN A PREVIOUSLY APPROVED BORROW LOCATION.
- A SAW CUT OF AT LEAST ONE-HALF THE DEPTH OF THE EXISTING SURFACE COURSES OR ONE-FOURTH THE DEPTH OF THE EXISTING TOTAL PAVEMENT THICKNESS SHALL BE PROVIDED AT LOCATIONS WHERE PROPOSED CONSTRUCTION ABUTS AN EXISTING SURFACE OR PAVEMENT FOR WHICH PARTIAL REMOVAL OF THAT SURFACE OR PAVEMENT IS REQUIRED. SAW JOINT TO FACILITATE REMOVAL WITHIN THREE (3) FEET OF EXISTING JOINTS WILL NOT BE PERMITTED AND FOR SUCH INSTANCES THE LIMITS OF REMOVAL SHALL EXTEND TO THE EXISTING JOINT. SUCH SAW CUTS WILL NOT BE PAID FOR DIRECTLY AND THIS COST SHALL BE CONSIDERED AS SUBSIDIARY TO THE REMOVAL OF SURFACE OR PAVEMENT.
- ALL AREAS DISTURBED SHALL BE SEEDED AS FOLLOWS:  
K-31 FESCUE AT A RATE OF 300 LBS/ACRE.  
THIS AREA SHALL BE FINE GRADED AND SURFACE SHALL BE FREE OF STICKS, SMALL STONES AND OTHER EXTRANEIOUS MATERIALS.
- ANY TREE THAT MUST HAVE BRANCHES REMOVED SHALL BE TRIMMED WITH A SHARP INSTRUMENT/TOOL THAT IS INTENDED FOR SUCH OPERATIONS. GAIN APPROVAL FROM MKEC BEFORE REMOVING BRANCHES FROM ANY TREE. KNOCKING BRANCHES OFF WITH A BACKHOE OR OTHER SIMILAR MACHINES IS NOT ACCEPTABLE. SEE DETAIL ON SHEET 17.
- ROUGH GRADING FOR THIS PROJECT HAS BEEN COMPLETED WITH THE MASS GRADING PROJECT TO WITHIN 0.1'. SOME FINAL GRADING WILL BE REQUIRED PRIOR TO CONSTRUCTING THE STREETS. THIS SHALL BE CONSIDERED SUBSIDIARY TO BID ITEM FOR ASPHALTIC CONCRETE PAVEMENT.
- MKEC WILL PROVIDE AS-BUILT DRAWINGS OF THE SITE GRADING PROJECT PRIOR TO BEGINNING CONSTRUCTION OF THIS PROJECT.

LENGTH OF PROJECT	
PECKHAM	972 FT.
PECKHAM CT.	470 FT.
EARTHWORK SUMMARY *	
EXCAVATION	1324 C.Y.
LOOSE FILL	0 C.Y.
COMPACTED FILL	860 C.Y.

\* FOR INFORMATION ONLY



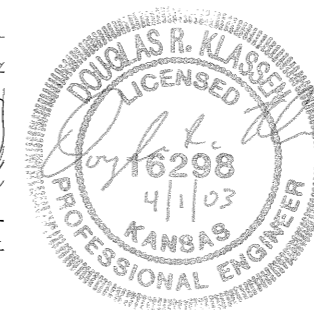
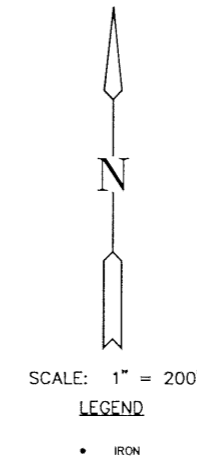
LOCATION MAP

## INDEX TO DRAWINGS

SHEET NO.	DESCRIPTION
1	TITLE SHEET
2	TYP. PAVING SECTIONS
3	VALLEY GUTTER DETAILS
4	SIGNING DETAILS
5-6	PECKHAM
7	PECKHAM CT.
8-11	SWS DETAILS
12-13	SWS LINE 1
14	EASEMENT GRADING
15-18	BMP DETAILS
19-28	CROSS SECTIONS
29-30	FINAL PLAT

## BENCHMARKS

BM #1	"I" POST 1571'+/- N. & 50'+/- E. OF SW COR. 2-27S-2E, 5'+/- N. & 10'+/- W. OF SW COR. LOT 16, BLK 1. ELEV.=1371.52
BM #2	"I" POST 2172'+/- N. & 50'+/- E. OF SW COR. 2-27S-2E, 4'+/- N. & 10'+/- W. OF SW COR. LOT 3, BLK 1. ELEV.=1373.52
BM #3	"I" POST 5'+/- S. & 5'+/- W. OF NE COR. LOT 23, BLK 1, SW COR. PECKHAM CT. AND PECKHAM. ELEV.=1363.16



**HAWTHORNE ADDITION  
PECKHAM (A) PHASE**  
PROJECT NAME

**TITLE SHEET**  
SHEET TITLE

BH	BFL	DRK
DESIGN BY:	DRAWN BY:	CHECKED BY:
MARCH 2003	2167_ET1	1 / 30
DATE	DRAWING NAME	SHEET/OF