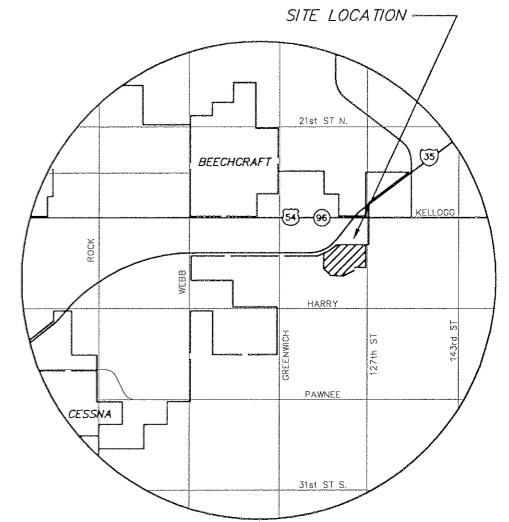


# PAVING STREETS AND INCIDENTAL DRAINAGE IN WOODLAND LAKES ESTATES THIRD

AN ADDITION TO THE CITY OF WICHITA  
SEDGWICK COUNTY, KANSAS  
PROJECT NO. 472-83716  
JIM ARMOUR, P.E. - ACTING CITY ENGINEER

OCA# 765848



VICINITY MAP

## INDEX TO DRAWINGS

SHEET NO.	DESCRIPTION
1	TITLE SHEET
2	TYP. PAVT. SECTION
3	PAVING DETAIL
4	SIGNING DETAILS
5	INLET HOOKUP DETAIL
6-7	PAVING PLANS
8-9	SWS PLAN & PROFILE
10-13	INLET & MANHOLE DETAILS
14-18	BMP DETAILS
19-24	CROSS SECTIONS
25	FINAL PLAT

SCALE: 1" = 150'

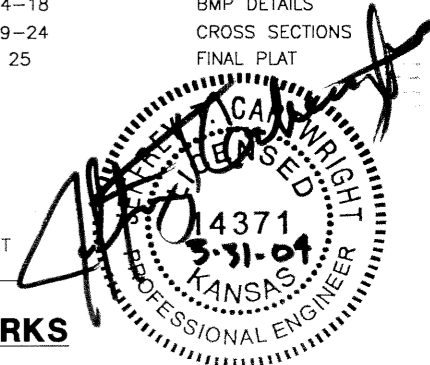
### LEGEND

• IRON

CONTRACTOR TO FINE GRADE & PERMANENT SEED HATCH AREA. SEED SHALL BE FESCUE SPREAD AT A RATE OF 350LB/ACRE. COST SUBSIDIARY TO BMP.

## BENCHMARKS

BM#	ELEVATION	DESCRIPTION
1	1340.415	T-post on Southwest corner of Zelta and Lincoln, 5' Southwest of the Northeast corner of Reserve A.
2	1339.135	T-post 5' West of the "East" corner of Lot 4, Block 2.
3	1342.695	T-post 5' East of the Northwest corner of Lot 18, Block 2.
4	1338.12	T-post 5' Northeast of the Southwest corner of Lot 12, Block 2.



**WOODLAND LAKES ESTATES  
THIRD ADDITION - BRACKEN PHASE**

PROJECT NAME

---

**PAVING TITLE SHEET**

SHEET TITLE

---

SRS	SRS	GLA
DESIGN BY:	DRAWN BY:	CHECKED BY:
MARCH 2004	02172ET	1 / 25
DATE	JOB NO.	SHEET/OF

## GENERAL NOTES

- UNLESS SHOWN OR STATED OTHERWISE ON THESE DRAWINGS, MATERIALS AND CONSTRUCTION SHALL BE IN ACCORDANCE WITH CITY OF WICHITA CONCRETE PAVEMENT AND ASPHALTIC CONCRETE PAVEMENT SPECIFICATIONS.
- CONTRACTOR WILL BE REQUIRED TO PROVIDE A MINIMUM ADVANCE NOTICE OF SEVENTY-TWO (72) HOURS TO UTILITY COMPANIES PRIOR TO STARTING ANY EXCAVATION AS FOLLOWS:  
KANSAS ONE-CALL 1-800-344-7233  
OR 687-2470 (LOCAL WICHITA)
- THE CONTRACTOR MUST NOTIFY THE FOLLOWING IN CASE OF AN EMERGENCY:  
SBC (TELEPHONE) 800-870-8390  
COX COMMUNICATIONS (CABLE) 262-0661  
WESTAR (ELECTRIC) 383-8600  
KANSAS GAS SERVICE (GAS) 832-3101  
CITY OF WICHITA WATER & SEWER MAINT. 262-6000  
AQUILA (GAS) 946-0096
- THE CONTRACTOR SHALL BE RESPONSIBLE FOR PRESERVING PROPERTY IRONS. THE CONTRACTOR WILL BE REQUIRED TO RE-ESTABLISH ANY PROPERTY IRONS WHICH ARE DAMAGED OR DESTROYED BY HIS CONSTRUCTION OPERATIONS. SUCH IRONS SHALL BE RE-ESTABLISHED BY A LICENSED LAND SURVEYOR IN ACCORDANCE WITH STATE LAWS.
- EXISTING UTILITIES AND THEIR LOCATIONS, AS SHOWN ON THE PLANS REPRESENT THE BEST INFORMATION OBTAINABLE FOR DESIGN. LOCATION INFORMATION HAS BEEN OBTAINED FROM THE VARIOUS UTILITY COMPANIES AND IS EITHER FROM COMPANY RECORD DRAWINGS OR COMPANY PROVIDED FIELD LOCATIONS. THE PLAN LOCATIONS SHOWN ARE NOT GUARANTEED. ADDITIONAL EXISTING UTILITIES MAY ALSO BE ENCOUNTERED.
- RUBBLE FROM THE REMOVAL OF MISCELLANEOUS STRUCTURES AND EXCESS EXCAVATION WHICH IS TO BE WASTED SHALL BE DISPOSED OF ON SITES TO BE PROVIDED BY THE CONTRACTOR. THESE SITES SHALL BE APPROVED BY THE ENGINEER AS TO SUITABILITY, APPEARANCE AND SITE LOCATION. LOCATIONS THAT, IN THE OPINION OF THE ENGINEER, WILL LEAVE AN UNSIGHTLY APPEARANCE WILL NOT BE APPROVED. ALL DISPOSAL SITES MUST BE APPROVED BY THE KANSAS DEPARTMENT OF HEALTH AND ENVIRONMENT. MATERIAL EITHER STOCKPILED OR DISPOSED OF IN A FLOOD PLAIN WOULD REQUIRE A KANSAS STATE BOARD OF AGRICULTURE PERMIT. ANY MATERIAL DUMPED IN WATERS OF THE UNITED STATES OR WETLANDS IS SUBJECT TO U.S. CORPS OF ENGINEERS PERMITTING REGULATIONS. ANY MATERIAL BURIED OR STOCKPILED BEYOND APPROVED CONSTRUCTION LIMITS WOULD REQUIRE ADDITIONAL ARCHAEOLOGICAL INVESTIGATIONS UNLESS BURIED IN A PREVIOUSLY APPROVED BORROW LOCATION.
- THIS PROJECT INCLUDES A CERTAIN AMOUNT OF ROLL TYPE CURB CONSTRUCTION. ROLL CURBS SHALL BE DEPRESSED THROUGH ALL DRIVEWAY OPENINGS WHEN SUCH DRIVES ARE CONSTRUCTED AS A PART OF THE PROJECT. NO MORE THAN 2 DRIVES 20 FEET IN WIDTH OR EQUIVALENT COMBINATIONS THEREOF ARE TO BE CONSTRUCTED WITH THIS PROJECT.
- TRANSITION CURB FROM FULL HEIGHT COMBINATION CURB AND GUTTER TO ROLL TYPE COMBINATION CURB AND GUTTER IS TO BE PAID AS BID FOR LINEAL FEET COMBINED CURB AND GUTTER (3 5/8" ROLL).
- A SAW CUT OF AT LEAST ONE-HALF THE DEPTH OF THE EXISTING SURFACE COURSES OR ONE-FOURTH THE DEPTH OF THE EXISTING TOTAL PAVEMENT THICKNESS SHALL BE PROVIDED AT LOCATIONS WHERE PROPOSED CONSTRUCTION ABUTS AN EXISTING SURFACE OR PAVEMENT FOR WHICH PARTIAL REMOVAL OF THAT SURFACE OR PAVEMENT IS REQUIRED. SAW JOINT TO FACILITATE REMOVAL WITHIN THREE (3) FEET OF EXISTING JOINTS WILL NOT BE PERMITTED AND FOR SUCH INSTANCES THE LIMITS OF REMOVAL SHALL EXTEND TO THE EXISTING JOINT. SUCH SAW CUTS WILL NOT BE PAID FOR DIRECTLY AND THIS COST SHALL BE CONSIDERED AS SUBSIDIARY TO THE REMOVAL OF SURFACE OR PAVEMENT.
- CONTRACTOR SHALL RESEED AND MULCH ALL DISTURBED AREAS. COST SHALL BE CONSIDERED SUBSIDIARY TO SITE RESTORATION.

NW Cor., SE. 1/4, Sec. 27, T27S, R2E 6th P.M.  
Set 5/8" rebar w/  
MKEC CLS 39 id cap

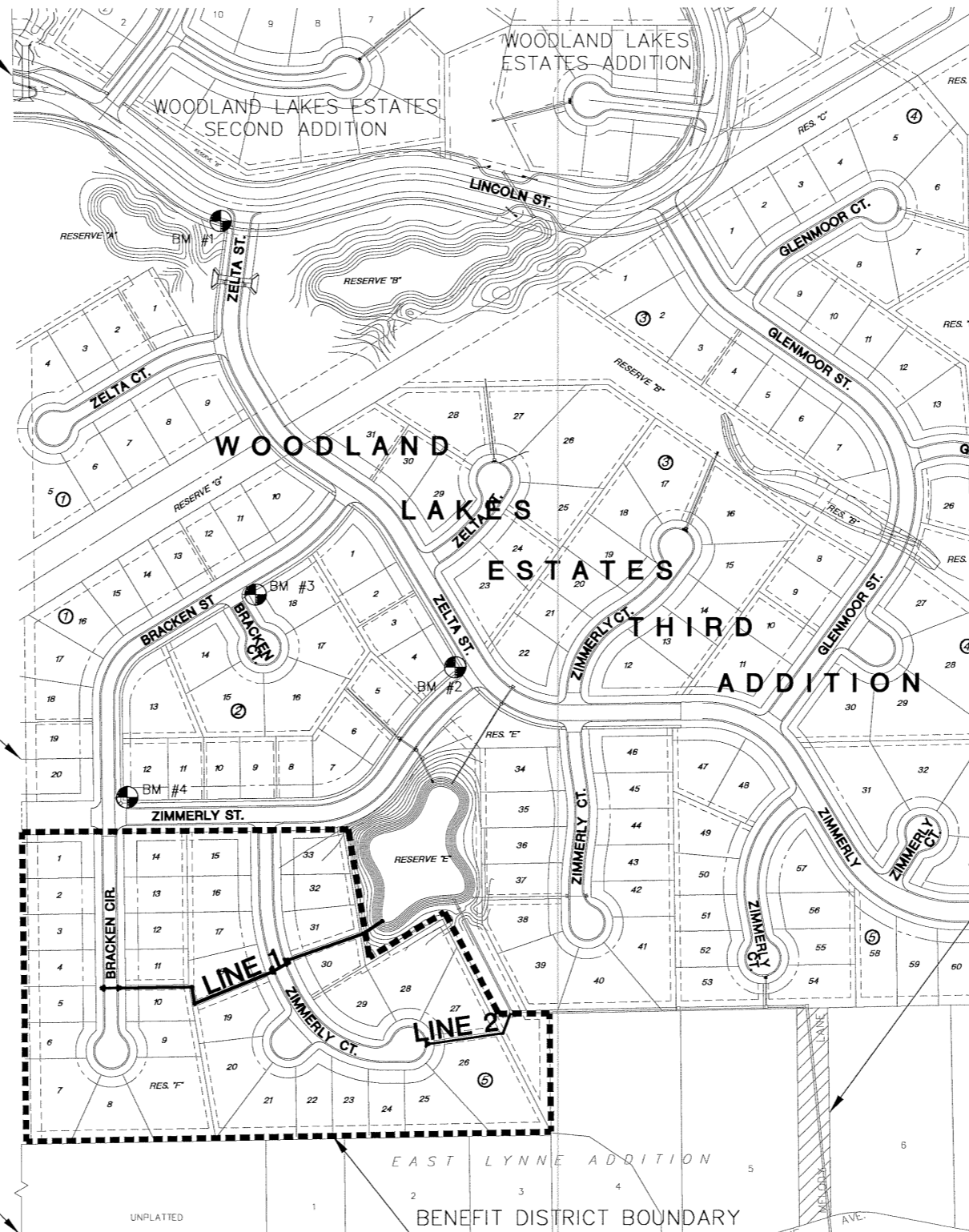
WINDSOR  
PARK  
ADDITION

S. 1/16 Cor., Sec. 27,  
T27S, R2E 6th P.M.  
Fnd. Stone

UNPLATTED

SW Cor., SE. 1/4, Sec. 27,  
T27S, R2E 6th P.M.  
Fnd. 3/4" Pipe

ROAD WORK	
LENGTH OF PROJECT.....	1009 L.F.
EXCAVATION.....	530 C.Y.
COMPACTED FILL.....	3740 C.Y.
LOOSE FILL.....	2610 C.Y.
BORROW.....	6570 C.Y.



H:\CIVIL\98058\02172.dwg\Prov\bracken\02172et.dwg