

BENCHMARK:
 CITY DISC - SW COR. RIDGE RD. & 29TH ST. NO.,
 80.8' S. & 63.7' W. OF C. BOTH.
 ELEV. = 139.15 CITY DATUM (1326.55 M.S.L.)

CITY DISC - SW HUB GUARD ON R.C.B.C.,
 1/2 MI. N. OF 29TH ST. NO. & RIDGE RD.
 ELEV. = 144.22 CITY DATUM (1331.62 M.S.L.)

Curve #1
 Curve Data Based on Centerline
 Rad. = 396' Delta = 10° 16' 27" Tangent = 35.60'
 Arc = 71.01' L.C. = 70.91' Def/Ft. = 4.34059 Min.

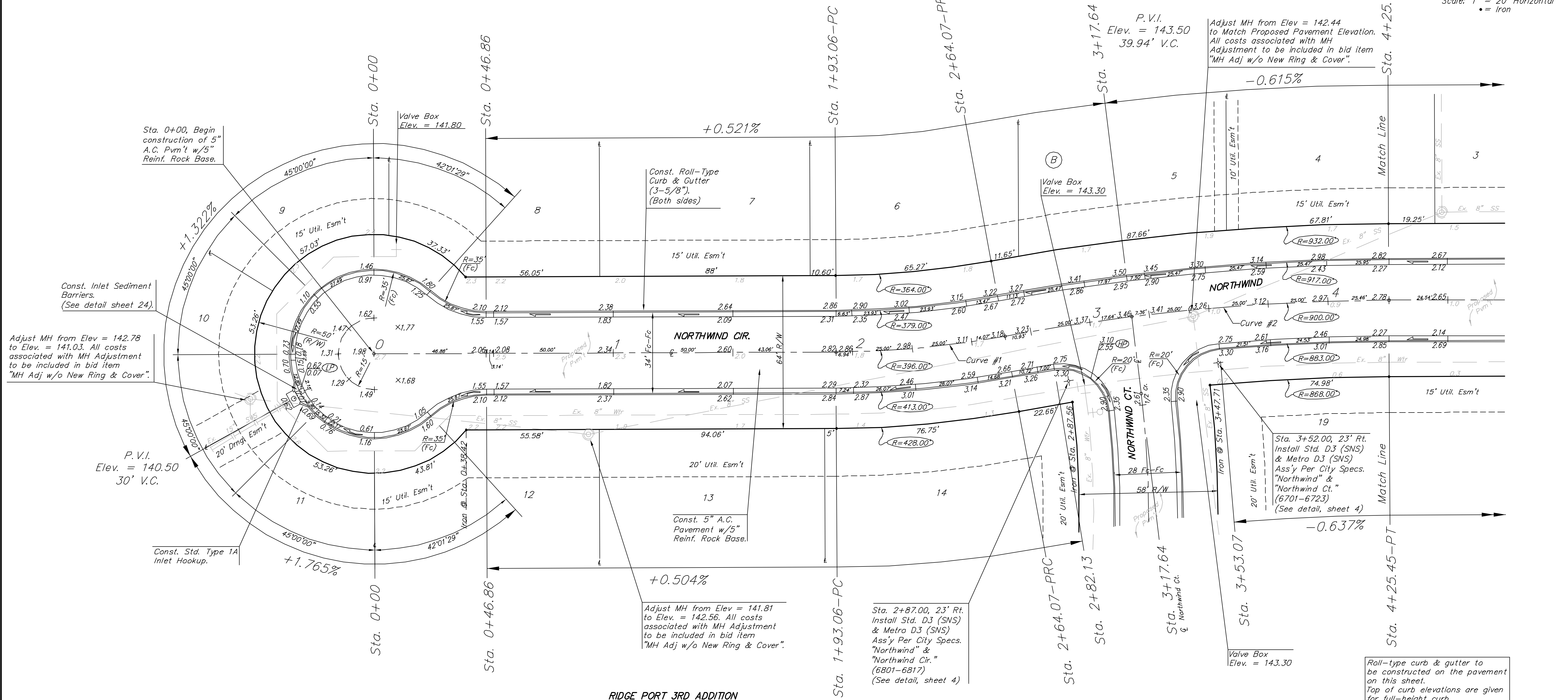
Station	Arc	FACE CHORD LENGTHS		Def.	T. Def.
		8' Lt.	8' Rt.		
1+93.06	-	-	-	0°00'00"	0°00'00"
2+00.00	6.94'	6.50'	7.38'	0°30'07"	0°30'07"
2+25.00	25.00'	23.42'	26.57'	1°48'31"	2°18'38"
2+50.00	25.00'	23.42'	26.57'	1°48'31"	4°07'09"
2+64.07	14.07'	13.18'	14.96'	1°01'04"	5°08'13"

Curve #2
 Curve Data Based on Centerline
 Rad. = 900' Delta = 10° 16' 27" Tangent = 80.91'
 Arc = 161.38' L.C. = 161.17' Def/Ft. = 1.90993 Min.

Station	Arc	FACE CHORD LENGTHS		Def.	T. Def.
		8' Lt.	8' Rt.		
2+64.07	-	-	-	0°00'00"	0°00'00"
2+75.00	10.93'	11.23'	10.62'	0°20'52"	0°20'52"
2+82.13	7.13'	7.34'	6.94'	0°13'38"	0°34'30"
3+00.00	17.87'	18.36'	17.37'	0°34'07"	1°08'37"
3+17.64	17.64'	18.19'	17.21'	0°33'42"	1°42'19"
3+25.00	7.36'	7.56'	7.15'	0°14'03"	1°56'22"
3+50.00	25.00'	25.70'	24.31'	0°47'45"	2°44'07"
3+53.07	3.07'	3.16'	2.99'	0°05'52"	2°49'59"
3+75.00	21.93'	22.54'	21.32'	0°41'53"	3°31'52"
4+00.00	25.00'	25.70'	24.31'	0°47'45"	4°19'37"
4+25.00	25.00'	25.70'	24.31'	0°47'45"	5°07'22"
4+25.45	0.45'	0.46'	0.43'	0°00'51"	5°08'13"

RIDGE PORT 3RD ADDITION

Scale: 1" = 20' Horizontal
 • = Iron



RIDGE PORT 3RD ADDITION

NORTHWIND CIR. & NORTHWIND
 STA. 0+00 TO STA. 4+25.45

BAUGHMAN COMPANY P.A.
 ENGINEERING, SURVEYING, & PLANNING
 316-262-7271 • 315 ELLIS • WICHITA, KANSAS 67211

PROJECT NUMBER: **472-83772**

DESIGN: NEW | DRAWN: GNX | APPROVED: [Signature] | DATE: 5/28/03 | SCALE: NOTED

SHEET **7** OF **34**