

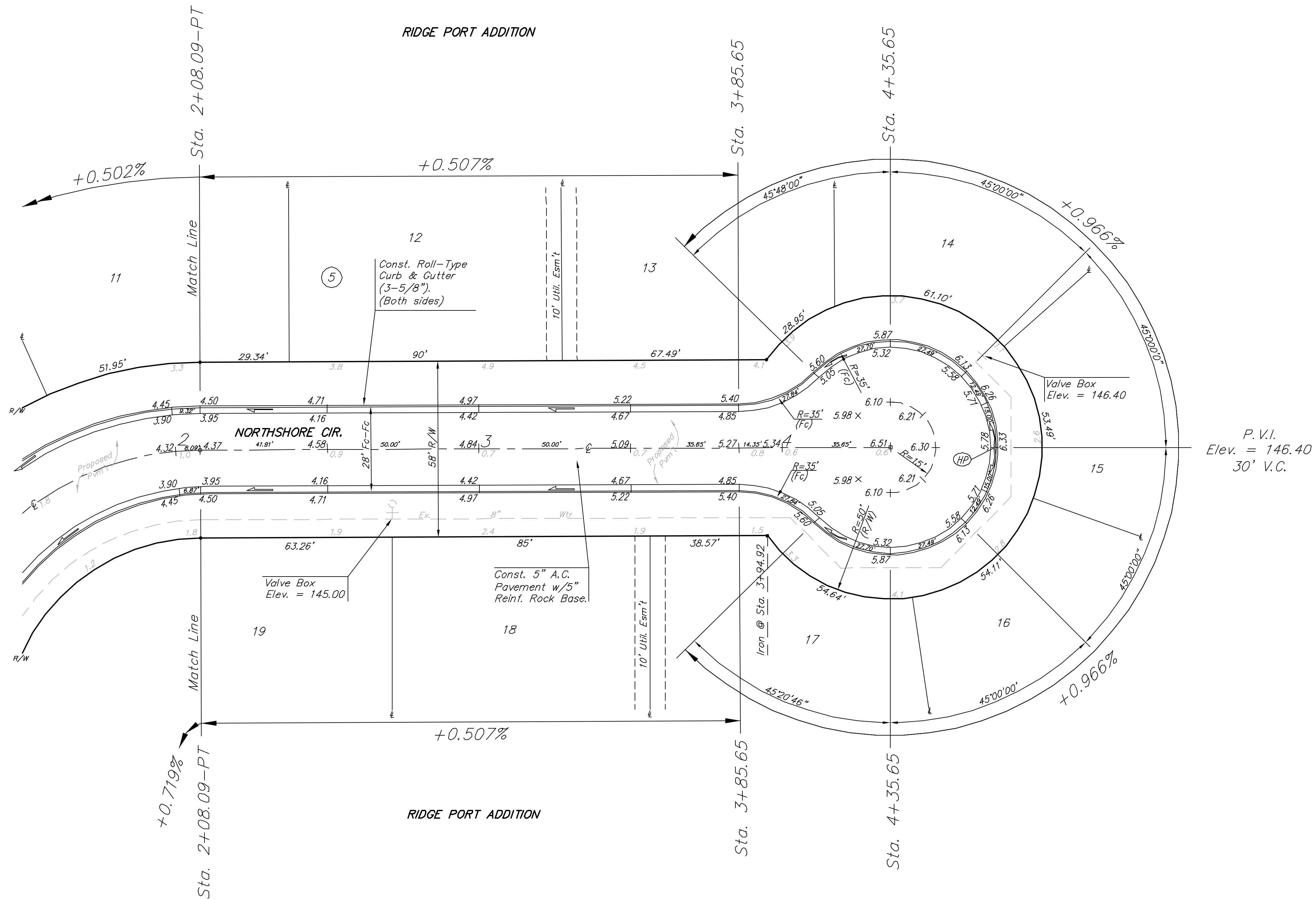
**BENCHMARK:**

CITY DISC - SW COR. RIDGE RD. & 29TH ST. NO.,  
80.8' S. & 63.7' W. OF C. BOTH.  
ELEV. = 139.15 CITY DATUM (1326.55 M.S.L.)

CITY DISC - SW HUB GUARD ON R.G.B.C.,  
1/2 MI. N. OF 29TH ST. NO. & RIDGE RD.  
ELEV. = 144.22 CITY DATUM (1331.62 M.S.L.)



Scale: 1" = 20' Horizontal  
• = Iron



Roll-type curb & gutter to be constructed on the pavement on this sheet. Top of curb elevations are given for full-height curb.

**NORTHSHORE CIR.**  
STA. 2+08.09 TO STA. 4+35.65

**BAUGHMAN COMPANY P.A.**  
ENGINEERING, SURVEYING, & PLANNING  
316-282-7271 • 315 ELLIS • WICHITA, KANSAS 67211

DESIGN	DRAWN	APPROVED	DATE	SCALE	SHEET OF
NBW	GNX		5/28/03	NOTED	

13  
OF  
34

Ridge/northsh/cir/13