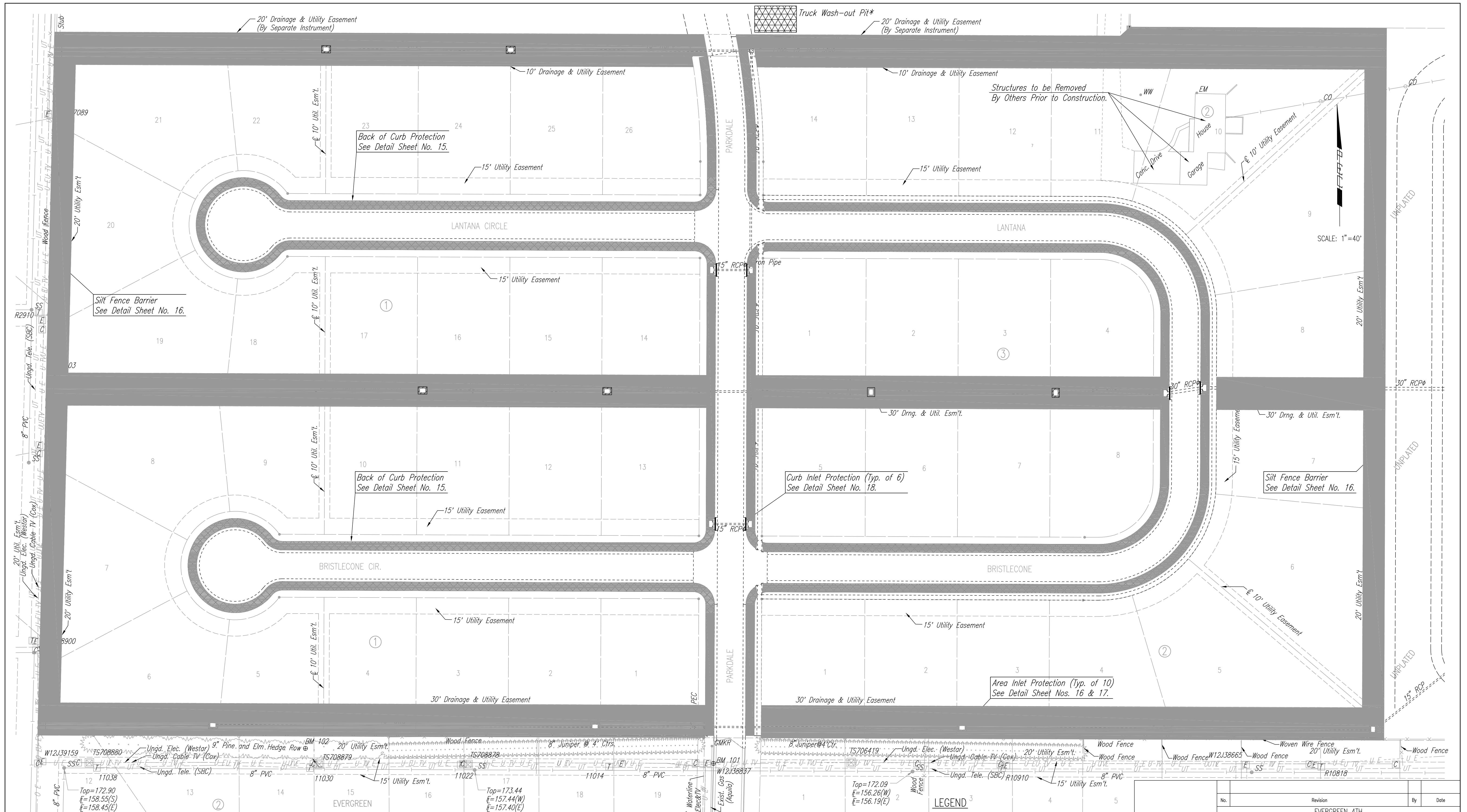


DSNR: BOB OPER: BJS SCALE: 1"=40.00
 Q:\2003\03123\000\EROSIONCONTROL 02-05-2004 10:57:45 am



GENERAL NOTES

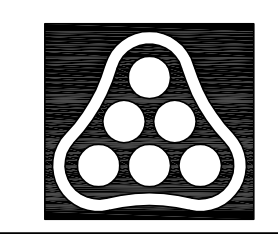
- THIS STANDARD DETAIL SHEET IS A PART OF YOUR BUILDING PERMIT. THE EROSION CONTROL DEVICES SHOWN ON THIS SHEET ARE CONSIDERED MINIMUM STANDARDS. WHENEVER SEDIMENT ENTERS THE STREETS, STORM SEWERS, DITCHES, OR PONDS, CONTRACTOR WILL INSTALL ADDITIONAL DEVICES, AS NEEDED, TO CORRECT THE PROBLEM.
- THE EROSION CONTROL DEVICES SHOWN HEREON MUST BE IN PLACE AT ALL TIME DURING CONSTRUCTION UNTIL SUCH TIME AS THE SITE IS REESTABLISHED WITH PAVING OR GRASS. TEMPORARY OR PERMANENT AND MULCH WILL BE INSTALLED WHEN EARTHWORK ACTIVITIES CEASE IN AN AREA FOR 14 DAYS OR MORE.
- BACK OF CURB PROTECTION: AS SHOWN ON CITY STANDARD DETAILS. THESE DEVICES MUST REMAIN IN PLACE UNTIL THE AREA BETWEEN THE CURB AND RIGHT-OF-WAY LINE HAS BEEN PERMANENTLY STABILIZED.
- ANY MUD INADVERTENTLY TRACKED ONTO ANY STREET WILL BE CLEANED UP BY THE CONTRACTOR, AT THE END OF EACH DAY'S WORK.

φ C.O.W. Proj. No. 468-83640

* Washout Pit Shall Be Signed Such That Its Location Is Obvious To Drivers. Contractor to Clean Out Pit and Backfill upon Project Completion.

LEGEND

- Silt Fence Barrier
- Curb Inlet Protection
- Area Inlet Protection
- Back of Curb Protection w/Permanent Seeding
- Permanent Seeding



No.		Revision		By		Date	
EVERGREEN 4TH							
EROSION CONTROL (BMP) PLAN							
JAMES L. ARMOUR, P.E.—ACTING CITY ENGINEER CITY OF WICHITA PROJECT NO. 472-83782							
Professional Engineering Consultants, P.A. 303 S. TOPEKA • WICHITA, KANSAS 67202 316-262-2691 • FAX 316-262-3003							
Designed by	BDB, BLB	Job No.	35-03123	Sht.		14 of 44	
Drawn by	BJS	Date	March 2003				