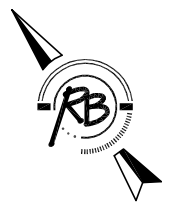
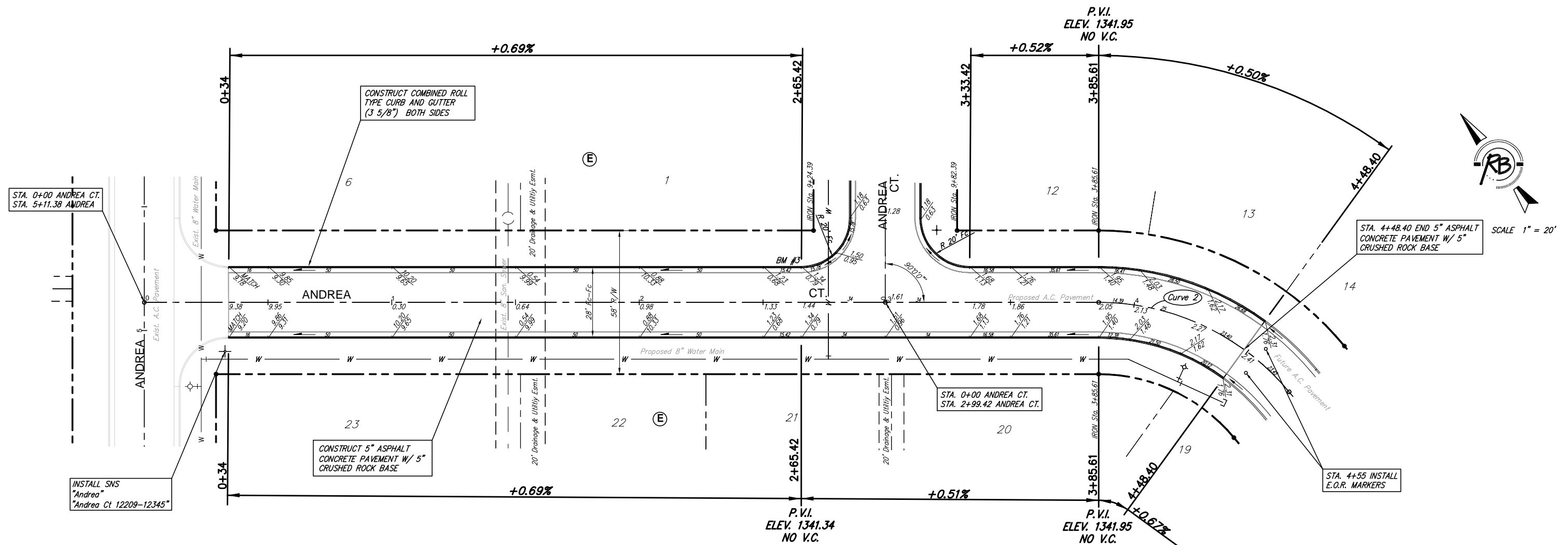


Subdivision Bench Marks

No.	Street and Station	From CL	Description	Elevation
3	Andrea Ct., Sta. 2+65.4	14.0' Lt.	North End of NE Return of Andrea Ct. & Andrea Ct.	



SCALE 1" = 20'

Curve 2
Curve Data Based on Centerline
Rad. = 100' Delta = 35° 59' 37" Tangent = 32.47'
Arc = 62.79' L.C. = 61.77' Def/PI = 17.18918 Min.

Station	Arc	FACE CHORD LENGTHS		Defl.	T. Defl.
		8 Lt.	8 Rt.		
3+85.61	-	-	-	0'00"00"	0'00"00"
4+00.00	14.39'	17.54'	11.21'	4'07"21"	4'07"21"
4+25.00	25.00'	30.42'	19.45'	7'09"44"	11'17"05"
4+48.40	23.40'	28.48'	18.21'	6'42"13"	17'59"18"

NOTE: ROLL TYPE CURB AND GUTTER TO BE CONSTRUCTED ALONG PAVEMENT DEPICTED ON THIS SHEET

Tara Falls Addition, Paving Improvements
Andrea Ct.
WICHITA, KANSAS

Ruggles & Bohm, P.A.
Engineering, Surveying, Land Planning

924 North Main (316) 264-8008
Wichita, Kansas 67203 (316) 264-4621 fax
www.rbkansas.com E-mail: info@rbkansas.com

DESIGN KWL	6 OF 32
DRAWN TEB	
REVIEW	
UTILITY	
DRAWING FILE Base Paving {Andrea Ct}	PROJECT NUMBER 472-83848
DATE Dec. 10, 2003	