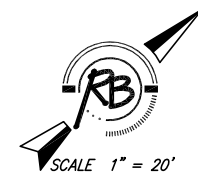
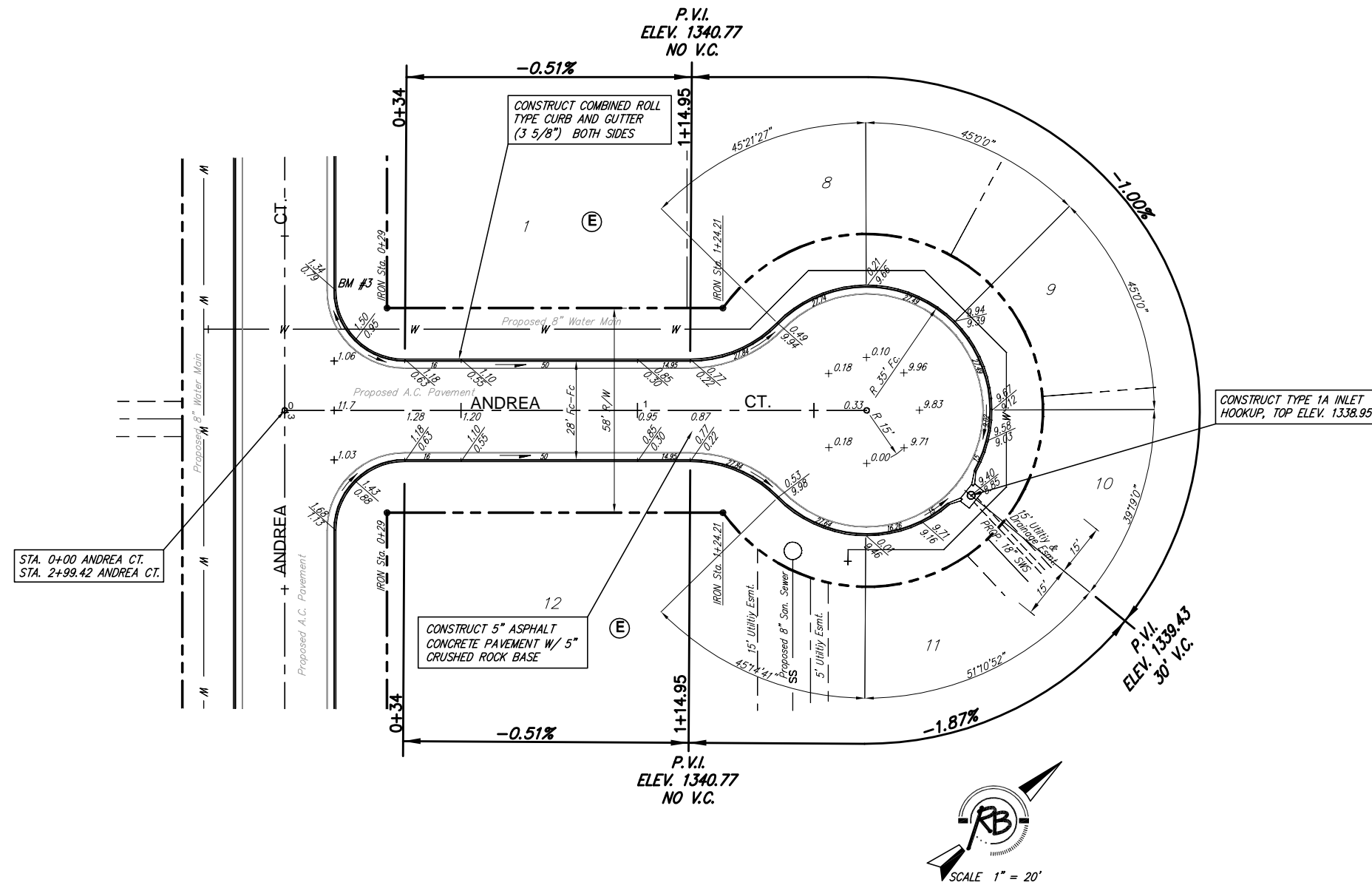


Subdivision Bench Marks

No.	Street and Station	From CL	Description	Elevation
3	Andrea Ct, Sta. 2+65.4	14.0' Lt.	North End of NE Return of Andrea Ct. & Andrea Ct.	



NOTE: ROLL TYPE CURB AND GUTTER TO BE CONSTRUCTED ALONG PAVEMENT DEPICTED ON THIS SHEET

Tara Falls Addition, Paving Improvements  
Andrea Ct.  
WICHITA, KANSAS



**Ruggles & Bohm, P.A.**  
Engineering, Surveying, Land Planning

924 North Main (316) 264-8008  
Wichita, Kansas 67203 (316) 264-4621 fax  
www.rbkansas.com E-mail: info@rbkansas.com

DESIGN	KWL	SHEET <b>7</b> OF 32
DRAWN	TEB	
REVIEW		
UTILITY		
DRAWING FILE	PROJECT NUMBER	DATE
Base Paving {Andrea Ct NE}	472-83848	Dec. 10, 2003