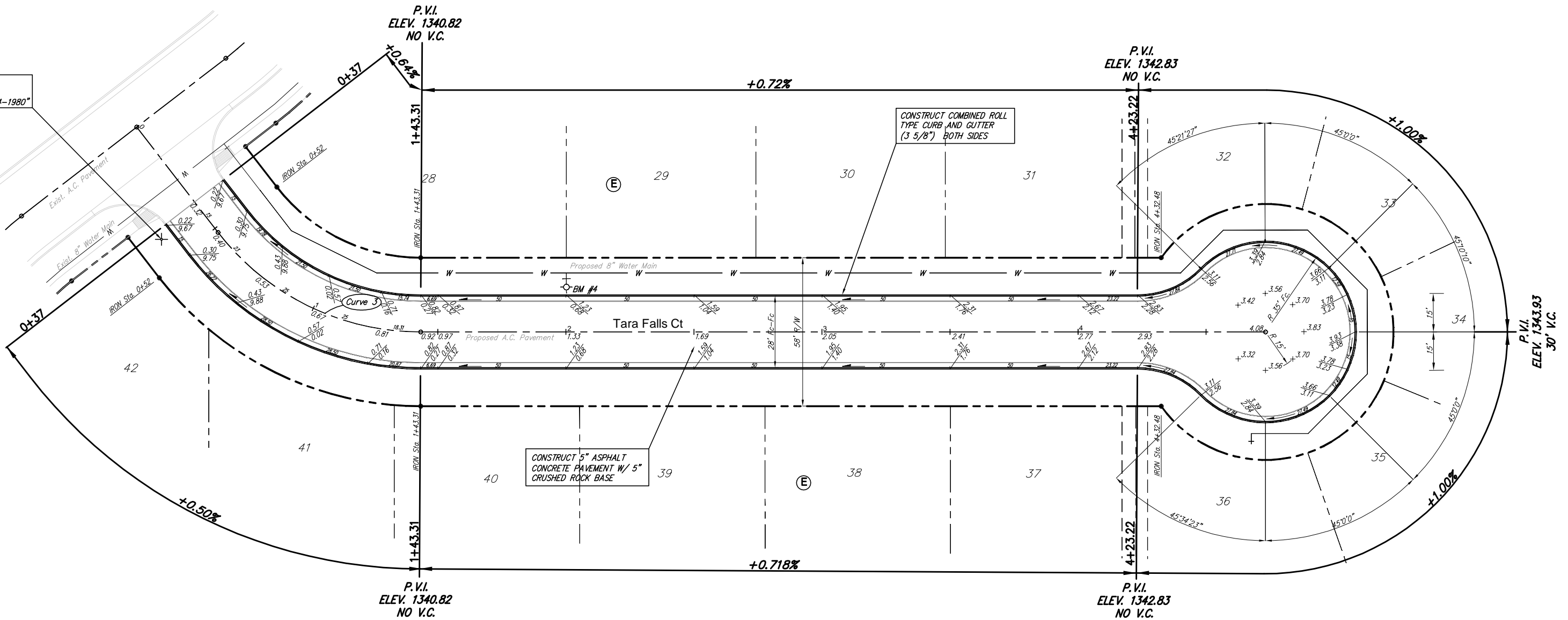


Subdivision Bench Marks

No.	Street and Station	From Cl.	Description	Elevation
4	Tara Falls Ct, Sta. 2+00	14.0' Lt.	N. Curb Tara Falls Ct, W. P.L. Lot 29, Block E	

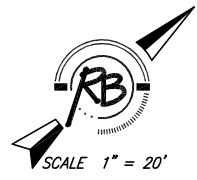
INSTALL SNS  
"Tara Falls"  
"Tara Falls Ct 1924-1980"



Curve 3

Curve Data Based on Centerline  
 Rad. = 100' Delta = 52° 18' 53" Tangent = 49.11'  
 Arc = 91.31' L.C. = 88.17' Def/FT. = 17.18806 Min.

Station	Arc	FACE CHORD LENGTHS			
		8 Lt.	8 Rt.	Defl.	T. Defl.
0+52.00	-	-	-	0'00.00"	0'00.00"
0+75.00	23.00'	17.90'	28.00'	6'35.19"	6'35.19"
1+00.00	25.00'	19.45'	30.42'	7'09.42"	13'45.01"
1+25.00	25.00'	19.45'	30.42'	7'09.42"	20'54.43"
1+43.31	18.31'	14.26'	22.31'	5'14.43"	26'09.26"



NOTE: ROLL TYPE CURB AND GUTTER TO BE CONSTRUCTED ALONG PAVEMENT DEPICTED ON THIS SHEET

**Tara Falls Addition, Paving Improvements**  
**Tara Falls Ct.**  
**WICHITA, KANSAS**

**Ruggles & Bohm, P.A.**  
 Engineering, Surveying, Land Planning

924 North Main (316) 264-8008  
 Wichita, Kansas 67203 (316) 264-4621 fax  
 www.rbkansas.com E-mail: info@rbkansas.com

DESIGN: KWL  
 DRAWN: TEB  
 REVIEW: [Blank]  
 UTILITY: [Blank]  
 DATE: Dec. 10, 2003

PROJECT NUMBER: 472-83848

SHEET  
 8  
 OF  
 32