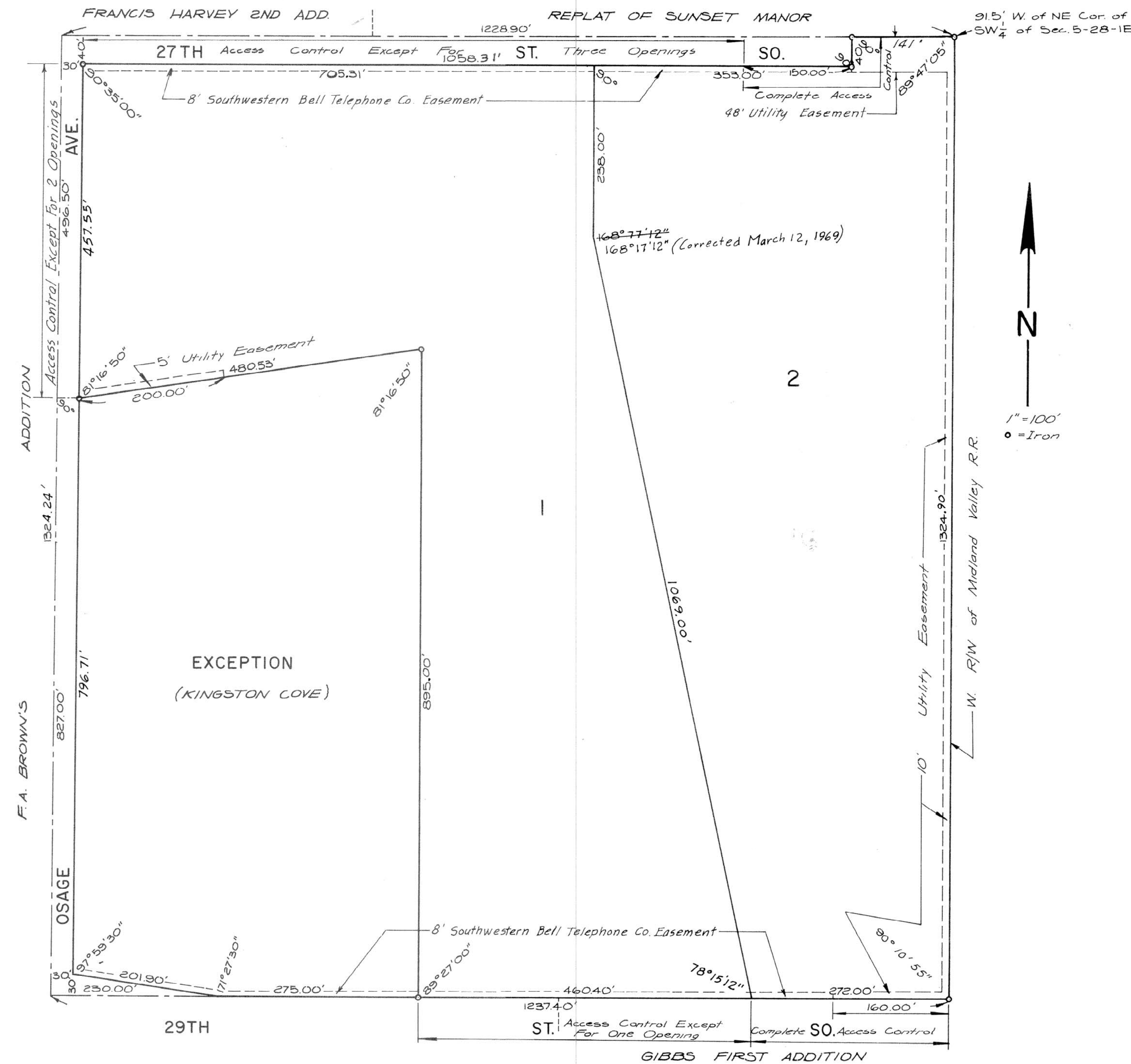


KINGSTON COVE SECOND ADDITION

WICHITA, SEDGWICK COUNTY, KANSAS



Note: No structure shall be constructed below a finish grade or foundation pad level of Elev. 1284.4 mean sea level datum. The minimum elevation along the south lines of Lots 1 and 2, the east line of Lot 2 and the north lines of Lots 1 and 2 shall be 1284.4 mean sea level.

Entered on transfer record this 31 day of January, 1969.
Marie Warden, County Clerk
 Marie Warden

State of Kansas) ss
 County of Sedgwick)

This is to certify that this instrument was filed for record in the Register of Deeds Office, at 4:15 p.m., on the 31 day of January, 1969.
John Haba, Register of Deeds
John Haba, Deputy
Pearl B. Gilbert, Deputy

State of Kansas) ss
 County of Sedgwick)

I, Kenneth O. Taylor, Civil Engineer in said State and County, do hereby certify that I have surveyed and platted "KINGSTON COVE SECOND ADDITION", Wichita, Sedgwick County, Kansas, and that the accompanying plat is a true and correct exhibit of said survey described as follows: The NE 1/4 of the SW 1/4 of Section 5, T28S, R1E of the 6th P.M., Sedgwick County, Kansas, except the right of way of the Midland Valley R. R. and except that part platted as Kingston Cove an Addition to Wichita, Sedgwick County, Kansas.

Kenneth O. Taylor Civil Engineer
 Kenneth O. Taylor

Know all men by these presents that Continental Construction Co., Inc., by Duane Schwada, President, has caused the land described in the Civil Engineer's certificate to be platted into lots, a street and an avenue to be known as "KINGSTON COVE SECOND ADDITION", Wichita, Sedgwick County, Kansas. Utility easements as indicated on the plat are hereby granted for the construction and maintenance of all public utilities. The street and avenue are hereby dedicated to and for the use of the public. All abutter's rights of access to or from 27th Street South, over and across the north line of the east 150 feet of the west 353 feet of Lot 2, are hereby granted to the City of Wichita. All abutter's rights of access to or from 27th Street South, over and across the north line of Lot 1 and the west 203 feet of the north line of Lot 2, are hereby granted to the City of Wichita, provided, however, that Lot 1 and the west 203 feet of Lot 2 shall have access to 27th Street South at a total of 3 locations to be designated by the City Engineer of the City of Wichita, Kansas. All abutter's rights of access to or from the east end of 27th Street South, over and across that part of Lot 2 abutting the east end of 27th Street South, are hereby granted to the City of Wichita. All abutter's rights of access to or from 29th Street South, over and across the south line of Lot 1, are hereby granted to the City of Wichita, provided, however, that Lot 1 shall have access to 29th Street South at one location to be designated by the City Engineer of the City of Wichita, Kansas. All abutter's rights of access to or from Osage Avenue, over and across the west line of Lot 1, are hereby granted to the City of Wichita, provided, however that Lot 1 shall have access to Osage Avenue at two locations to be designated by the City Engineer of the City of Wichita, Kansas. No structure shall be constructed below a finish grade or foundation pad level of Elev. 1284.4 mean sea level datum. The minimum elevation along the south lines of Lots 1 and 2, the east line of Lot 2 and the north lines of Lots 1 and 2 shall be 1284.4 mean sea level.

ATTEST: Bob Moore, Secretary
Duane Schwada, President
 Continental Construction Co., Inc.

State of Kansas) ss
 County of Sedgwick)

Be it remembered that on this 5th day of NOVEMBER, 1968, before me, a notary public in and for said County and State, came Duane Schwada, President of Continental Construction Co., Inc., to me personally known to be the same person who executed the foregoing instrument of writing and duly acknowledged the execution of same. In testimony whereof I have hereunto set my hand and affixed my notarial seal the day and year above written.

My Commission expires: SEP 14, 1972
Anita D. Garton, Notary Public
 ANITA D. GARTON

Know all men by these presents, that Metropolitan Life Insurance Company, by C. R. MacKenzie, INVESTMENT VICE PRESIDENT-MORTGAGES, mortgagee of the land described in the Civil Engineer's certificate does hereby consent to the platting of "KINGSTON COVE SECOND ADDITION", Wichita, Sedgwick County, Kansas.

ATTEST: C. R. MacKenzie, INVESTMENT VICE PRESIDENT-MORTGAGES
 C. R. MacKenzie

State of New York) ss
 County of NEW YORK

Be it remembered that on this 4th day of NOVEMBER, 1968, before me, a notary public in and for said County and State, came C. R. MacKenzie, INVESTMENT VICE PRESIDENT-MORTGAGES of the Metropolitan Life Insurance Company, to me personally known to be the same person who executed the foregoing instrument of writing and duly acknowledged the execution of same. In testimony whereof I have hereunto set my hand and affixed my notarial seal the day and year above written.

My Commission expires: MARCH 30 1970
Daniel J. Lane, Notary Public
 DANIEL J. LANE
 NOTARY PUBLIC State of N.Y.
 No. 40 7417500
 Qualified in Person
 Certificate filed in New York
 Commission Exp. - March 30

This plat of "KINGSTON COVE SECOND ADDITION", Wichita, Sedgwick County, Kansas, has been submitted to and approved by the Wichita-Sedgwick County Metropolitan Area Planning Commission, Wichita, Kansas.
 Dated this 12th day of SEPTEMBER, 1968.

Wichita-Sedgwick County Metropolitan Area Planning Commission
 By William D. Anderson, Jr., Chairman
C. Bickley Foster, Secretary
 C. Bickley Foster

The dedications shown on this plat accepted by the Board of City Commissioners of the City of Wichita, Kansas, this 14th day of JANUARY, 1969.
William D. Anderson, Jr., Mayor
Ralph C. Eberly, City Clerk
 Ralph C. Eberly

The dedications shown on this plat accepted by the Board of County Commissioners of Sedgwick County, Kansas, this 31 day of JANUARY, 1969.
 ATTEST: Marie Warden, County Clerk
 Marie Warden
Elmer S. Peters
Tom Scott
Bart B. Rush
 County Commissioners

KINGSTON COVE 2nd ADDITION STREET IMPROVEMENTS RECORDED PLAT CITY OF WICHITA, KANSAS JAMES ARMOUR, P.E. - CITY ENGINEER	POE & ASSOCIATES, INC. CONSULTING ENGINEERS 5940 E. Central, Suite 200 • Wichita, KS 67208-4242 Phone 316/685-4114 • FAX 316/685-4444
---	--

Designed By: <u>K. Hill / J. Dickmon</u> Drawn By: <u>K. Hill / J. Dickmon</u> Pce. Job No.: <u>1780</u> Date: <u>March 2004</u>	<b style="font-size: 2em;">FINAL
---	--------------------------------------

Sheet 18 of 18