

BENCHMARKS:
 City Disc In T.C. Adj. to F.H. 38'
 South of intersection of Onewood
 and Auburn Hills.
 Elev. = 178.48 (City Datum)

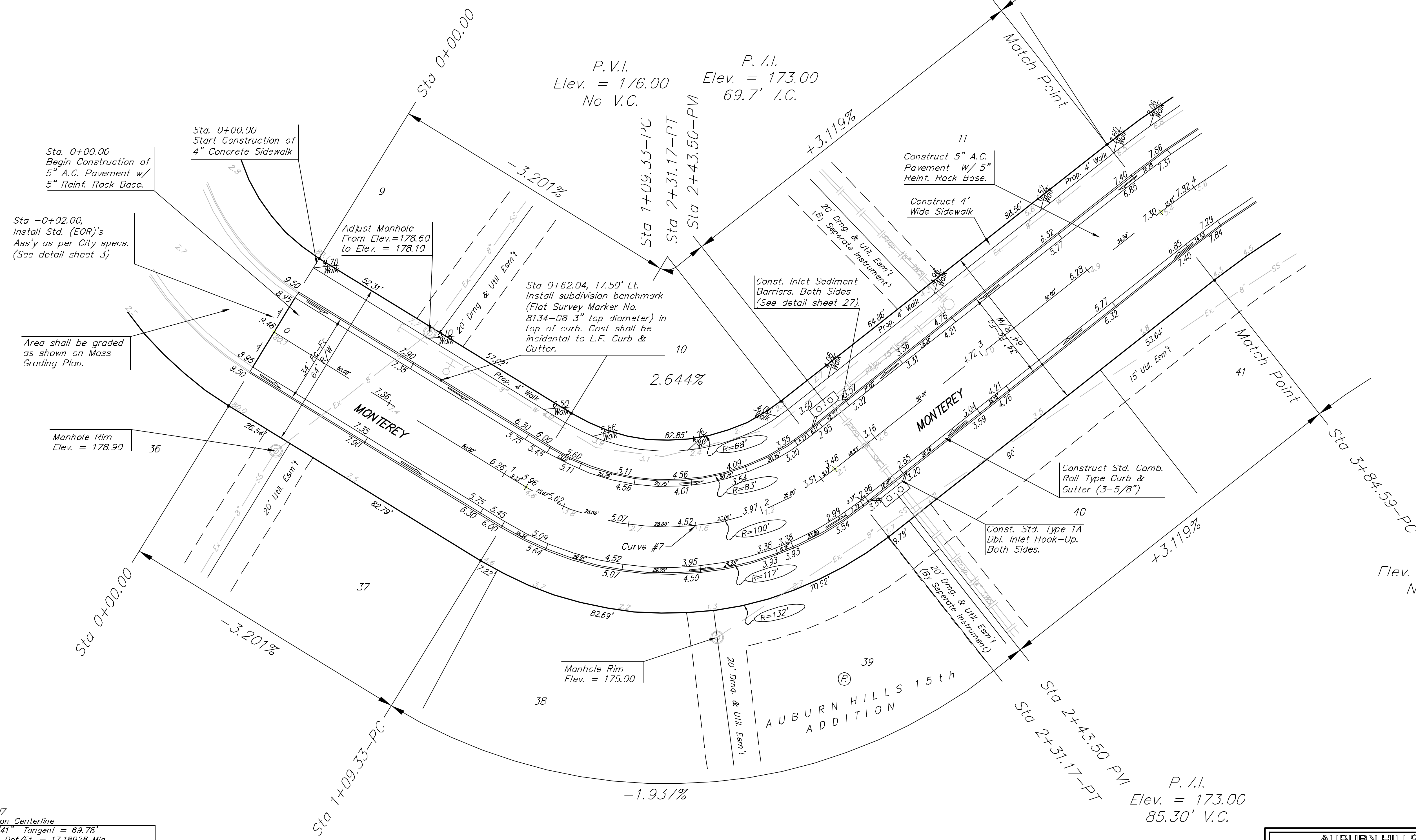
"□" cut in south curb of Onewood
 272' west of C.L. Auburn Hills.
 Elev. = 179.73 (City Datum)

P.V.I.
 Elev. = 177.40
 No V.C.

P.V.I.
 Elev. = 176.00
 No V.C.

P.V.I.
 Elev. = 173.00
 69.7' V.C.

Scale: 1" = 20'
 • = Iron



Curve #7

Curve Data Based on Centerline

Rad. = 100' Delta = 69°48'41" Tangent = 69.78'
 Arc = 121.84' L.C. = 114.45' Def/Ft. = 17.18928 Min.

Station	Arc	FACE CHORD LENGTHS		Defl.	T. Defl.
		8' Lt.	8' Rt.		
1+09.33	-	-	-	0°00'00"	0°00'00"
1+25.00	15.67'	11.74'	19.57'	4°29'21"	4°29'21"
1+50.00	25.00'	18.70'	31.17'	7°09'44"	11°39'05"
1+75.00	25.00'	18.70'	31.17'	7°09'44"	18°48'49"
2+00.00	25.00'	18.70'	31.17'	7°09'44"	25°58'33"
2+25.00	25.00'	18.70'	31.17'	7°09'44"	33°08'17"
2+31.17	6.17'	4.63'	7.71'	1°46'03"	34°54'21"

P.V.I.
 Elev. = 176.00
 No V.C.

P.V.I.
 Elev. = 173.00
 85.30' V.C.

NOTE: ROLL TYPE CURB & GUTTER TO BE CONSTRUCTED ON THE PAVEMENT SHOWN ON THIS SHEET. TOP OF CURB ELEVATIONS ARE GIVEN FOR FULL HEIGHT CURB.

AUBURN HILLS 15th ADDITION
MONTEREY
 STA 0+00.00 TO STA 3+84.59

BAUGHMAN COMPANY P.A.
 ENGINEERING, SURVEYING, & PLANNING
 316-282-7271 • 315 ELLIS • WICHITA, KANSAS 67211

PROJECT NUMBER
472-83830

DESIGN: NEW DRAWN: ATD APPROVED: DATE: 02/04 SCALE: Noted

SHEET
10
 OF
48