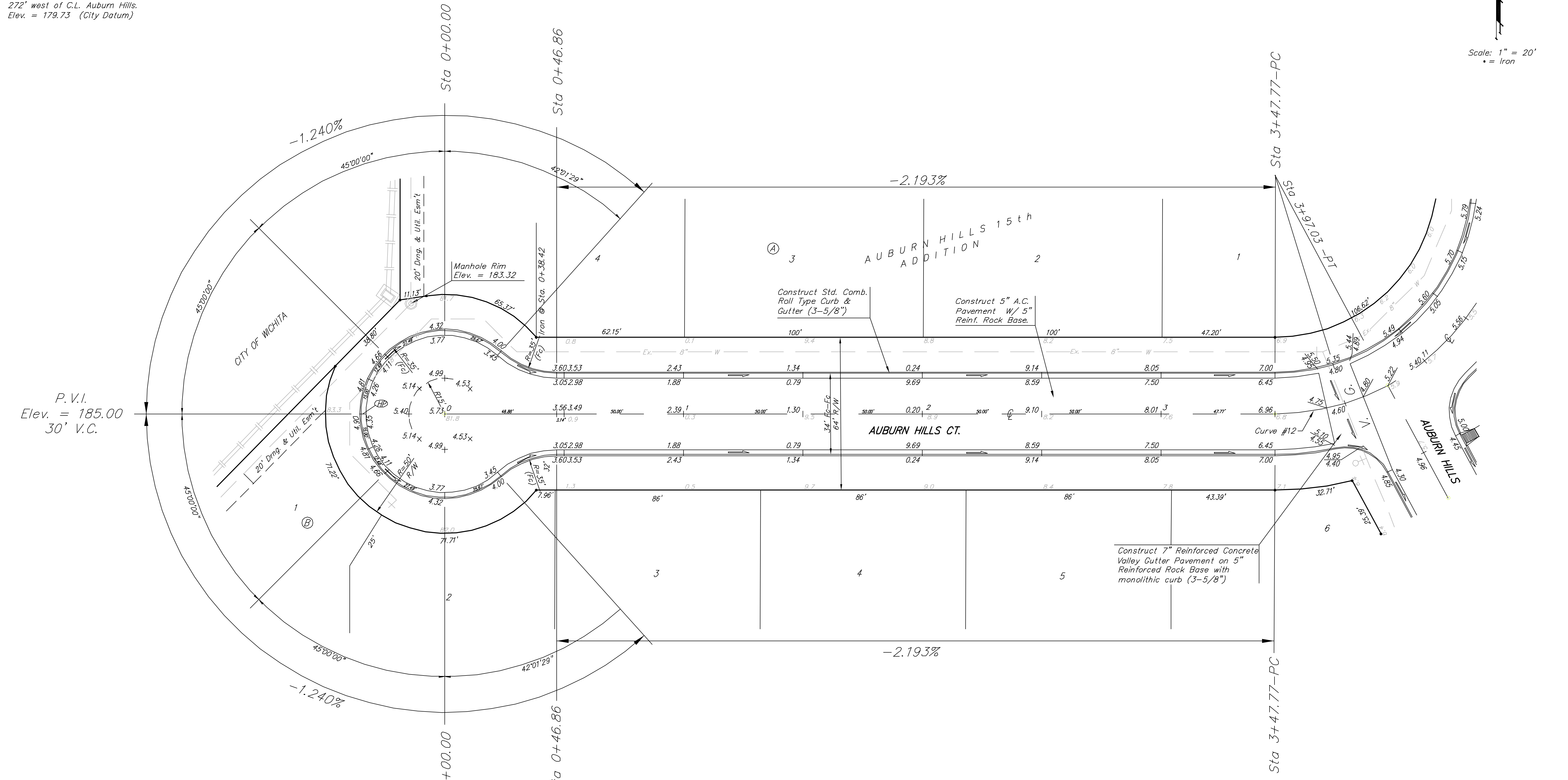
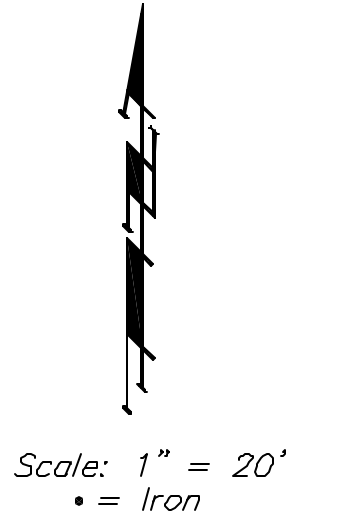


BENCHMARKS:
 City Disc In T.C. Adj. to F.H. 38'
 South of intersection of Onewood
 and Auburn Hills.
 Elev. = 178.48 (City Datum)

"□" cut in south curb of Onewood
 272' west of C.L. Auburn Hills.
 Elev. = 179.73 (City Datum)



P.V.I.
 Elev. = 185.00
 30' V.C.

Curve #12
 Curve Data Based on Centerline
 Rad. = 100' Delta = 28°13'34" Tangent = 25.14'
 Arc = 49.26' L.C. = 48.77' Def/Fl. = 17.19008 Min.

Station	Arc	FACE CHORD LENGTHS		Defl.	T. Defl.
		B' Lt.	B' Rt.		
3+47.77	—	—	—	0°00'00"	0°00'00"
3+50.00	2.23'	1.67'	2.79'	0°38'20"	0°38'20"
3+75.00	25.00'	18.70'	31.17'	7°09'45"	7°48'05"
3+97.03	22.03'	16.49'	27.48'	6°18'42"	14°06'47"

NOTE: ROLL TYPE CURB & GUTTER TO BE CONSTRUCTED ON THE PAVEMENT SHOWN ON THIS SHEET. TOP OF CURB ELEVATIONS ARE GIVEN FOR FULL HEIGHT CURB.

AUBURN HILLS 15th ADDITION
AUBURN HILLS CT.
 STA 0+00.00 TO STA 3+97.03

BAUGHMAN COMPANY P.A.
 ENGINEERING, SURVEYING, & PLANNING
 316-282-7271 • 315 ELLIS • WICHITA, KANSAS 67211

PROJECT NUMBER
472-83930

DESIGN: NBW DRAWN: AID APPROVED: DATE: 02/04 SCALE: Noted

SHEET
13
 OF
48