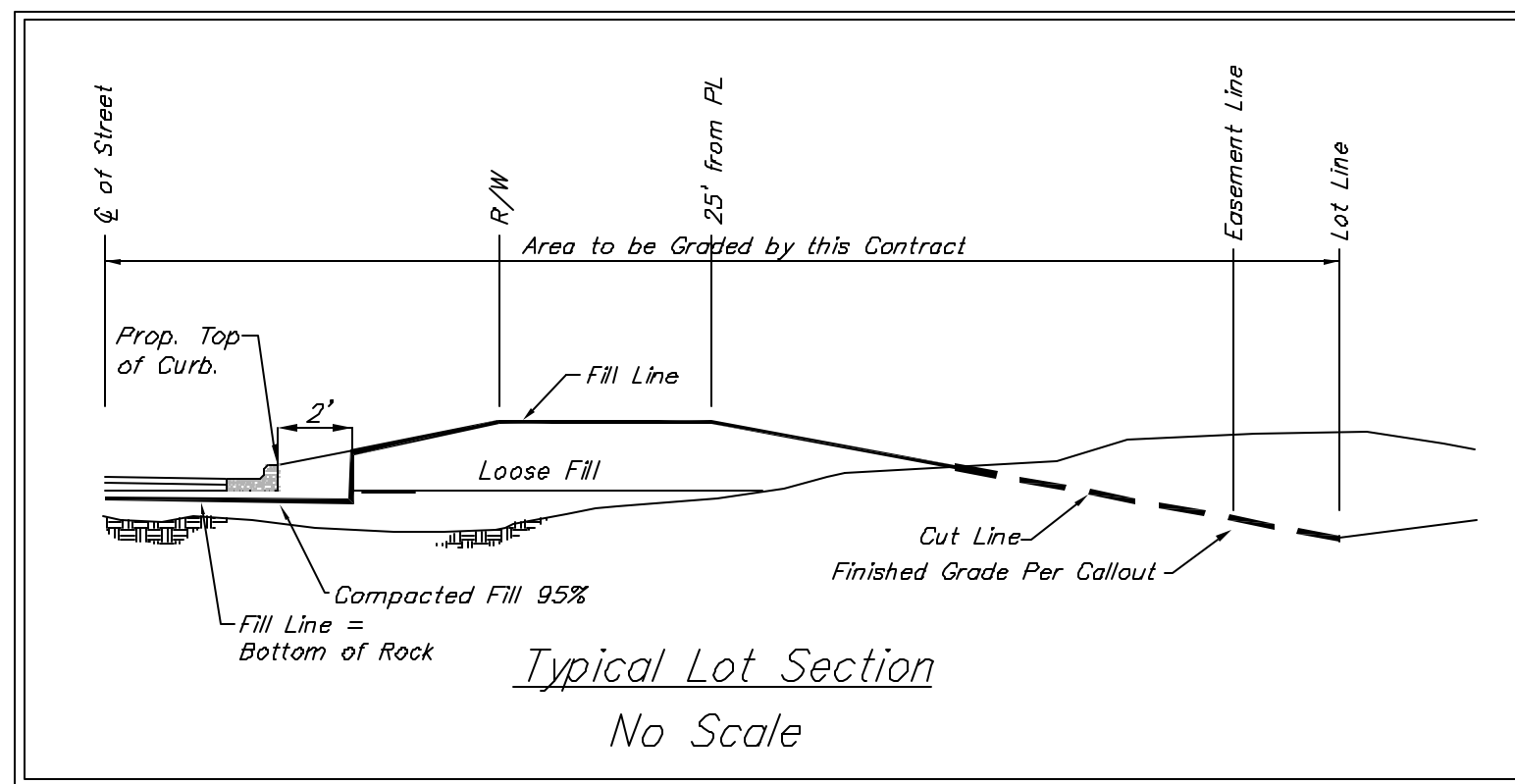


**BENCHMARKS:**  
 City Disc in T.C. Adj. to F.H. 38'  
 South of intersection of Onewood  
 and Auburn Hills.  
 Elev. = 178.48 (City Datum)

"□" cut in south curb of Onewood  
 272' west of C.L. Auburn Hills.  
 Elev. = 179.73 (City Datum)



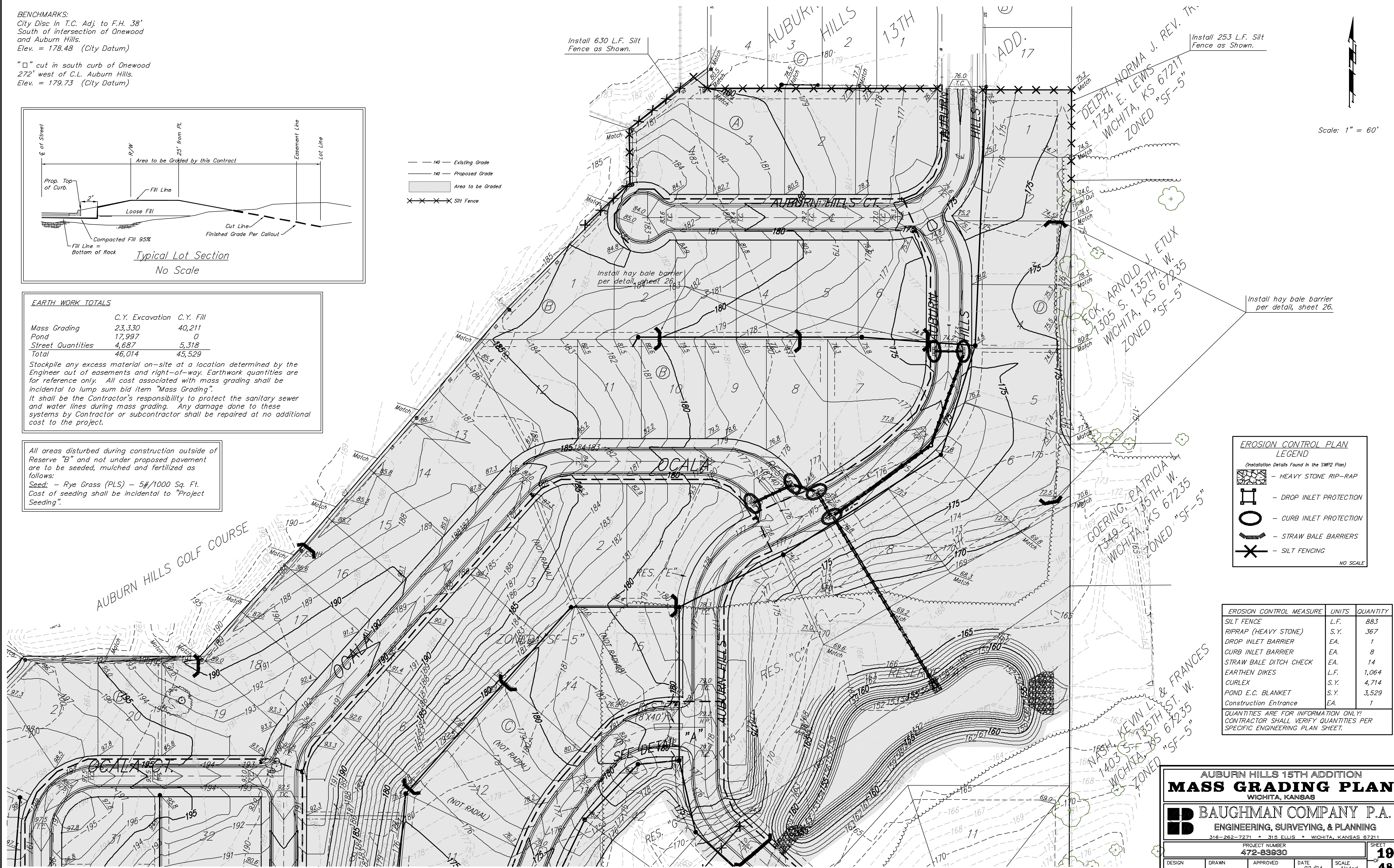
**EARTH WORK TOTALS**

	C.Y. Excavation	C.Y. Fill
Mass Grading	23,330	40,211
Pond	17,997	0
Street Quantities	4,687	5,318
<b>Total</b>	<b>46,014</b>	<b>45,529</b>

Stockpile any excess material on-site at a location determined by the Engineer out of easements and right-of-way. Earthwork quantities are for reference only. All cost associated with mass grading shall be incidental to lump sum bid item "Mass Grading".  
 It shall be the Contractor's responsibility to protect the sanitary sewer and water lines during mass grading. Any damage done to these systems by Contractor or subcontractor shall be repaired at no additional cost to the project.

All areas disturbed during construction outside of Reserve "B" and not under proposed pavement are to be seeded, mulched and fertilized as follows:  
 Seed: - Rye Grass (PLS) - 5#/1000 Sq. Ft.  
 Cost of seeding shall be incidental to "Project Seeding".

--- 140 --- Existing Grade  
 --- 140 --- Proposed Grade  
 [Shaded Area] Area to be Graded  
 x x x x x Silt Fence



Scale: 1" = 60'

**EROSION CONTROL PLAN LEGEND**  
 (Installation Details Found in the SWP2 Plan)

- [Symbol] - HEAVY STONE RIP-RAP
- [Symbol] - DROP INLET PROTECTION
- [Symbol] - CURB INLET PROTECTION
- [Symbol] - STRAW BALE BARRIERS
- [Symbol] - SILT FENCING

NO SCALE

EROSION CONTROL MEASURE	UNITS	QUANTITY
SILT FENCE	L.F.	883
RIPRAP (HEAVY STONE)	S.Y.	367
DROP INLET BARRIER	EA.	1
CURB INLET BARRIER	EA.	8
STRAW BALE DITCH CHECK	EA.	14
EARTHEN DIKES	L.F.	1,064
CURLEX	S.Y.	4,714
POND E.C. BLANKET	S.Y.	3,529
Construction Entrance	EA.	1

QUANTITIES ARE FOR INFORMATION ONLY!  
 CONTRACTOR SHALL VERIFY QUANTITIES PER SPECIFIC ENGINEERING PLAN SHEET.

**AUBURN HILLS 15TH ADDITION**  
**MASS GRADING PLAN**  
 WICHITA, KANSAS

**BAUGHMAN COMPANY P.A.**  
 ENGINEERING, SURVEYING, & PLANNING  
 316-282-7271 • 316 ELLIS • WICHITA, KANSAS 67211

PROJECT NUMBER  
**472-83830**

DESIGN [ ] DRAW [ ] APPROVED [ ] DATE 02/04 SCALE Noted

SHEET  
**19**  
 OF  
**48**