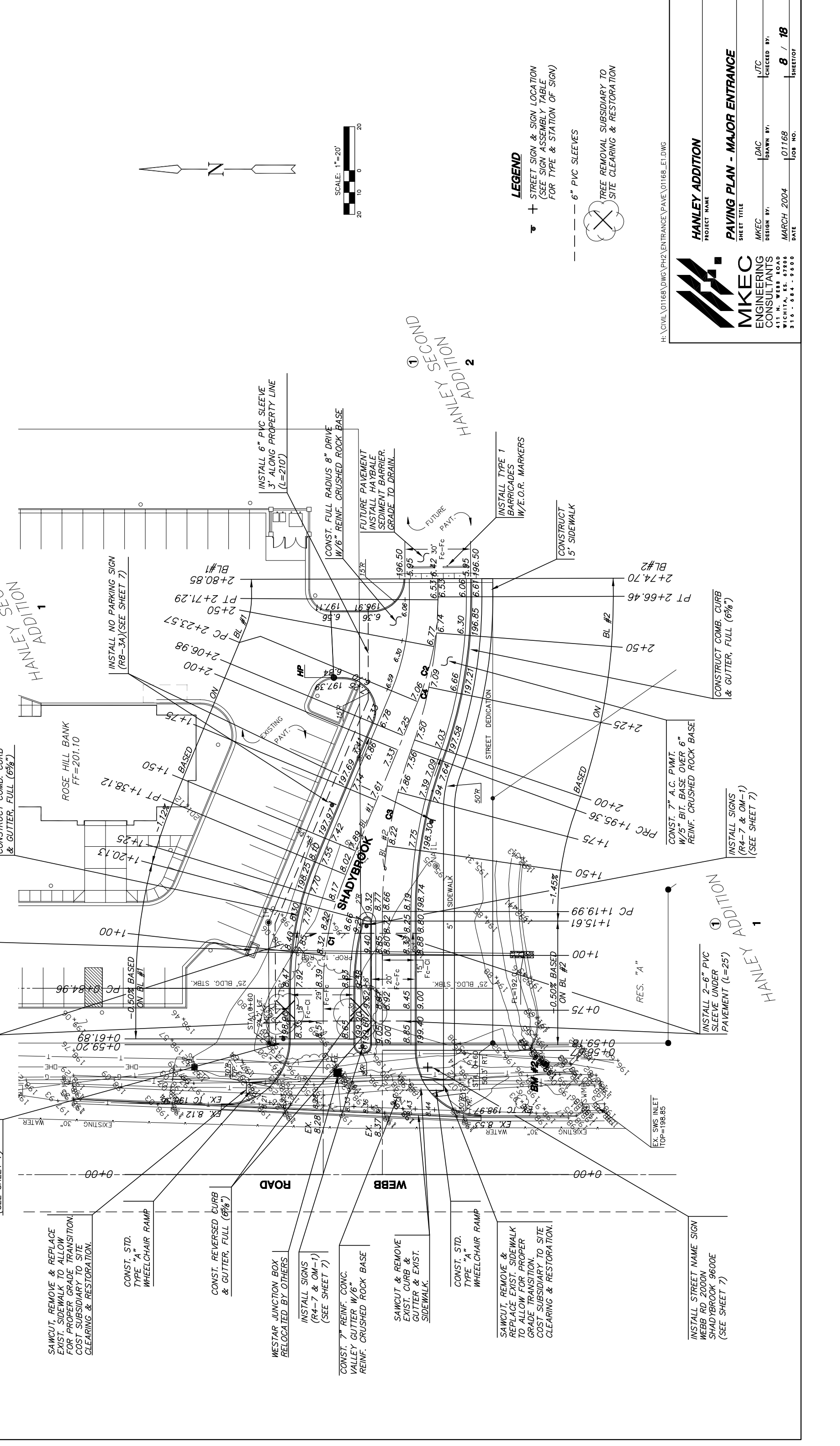


SUBDIVISION BENCH MARKS			
NO.	STREET AND STATION	FROM CL DESCRIPTION	ELEVATIONS
1	SHADYBROOK 1+75	15' RT.	SOUTH OF BASELINE #2 AT STA. 1+75 ON TOP OF CURB

NOTE: CONTRACTOR SHALL INSTALL SUBDIVISION BENCH MARKS ("FLAT SURVEY MARKERS NO. 8734-08 3" TOP DIAMETER" PROVIDED BY KANSAS BLUE PRINT CO., INC.) COSTS TO BE CONSIDERED SUBSIDIARY TO CONSTRUCTION OF COMBINED CURB AND GUTTER.

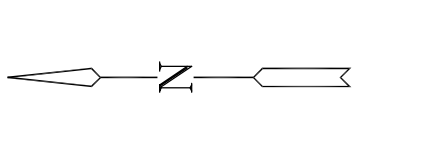
SUBDIVISION BENCH MARKS			
NO.	STREET AND STATION	FROM CL DESCRIPTION	ELEVATIONS
1	SHADYBROOK 1+75	15' RT.	SOUTH OF BASELINE #2 AT STA. 1+75 ON TOP OF CURB



HANLEY ADDITION SECOND 1

HANLEY ADDITION SECOND 1

HANLEY ADDITION SECOND 1



HANLEY ADDITION SECOND 2

- LEGEND**
- STREET SIGN & SIGN LOCATION (SEE SIGN ASSEMBLY TABLE FOR TYPE & STATION OF SIGN)
 - 6" PVC SLEEVES
 - TREE REMOVAL SUBSIDIARY TO SITE CLEARING & RESTORATION

HANLEY ADDITION
PROJECT NAME

MKEC
ENGINEERING CONSULTANTS
411 N. WEBB ROAD
WICHITA, KS. 67206
316 - 684 - 9500

PAVING PLAN - MAJOR ENTRANCE
SHEET TITLE

DESIGN BY: LDAC
DRAWN BY: JTC
CHECKED BY: JTC

DATE: MARCH 2004
JOB NO.: 01168
SHEET/OF: 8 / 18

H:\CIVIL\01168\DWG\PH2\ENTRANCE\PAVE\01168_E1.DWG