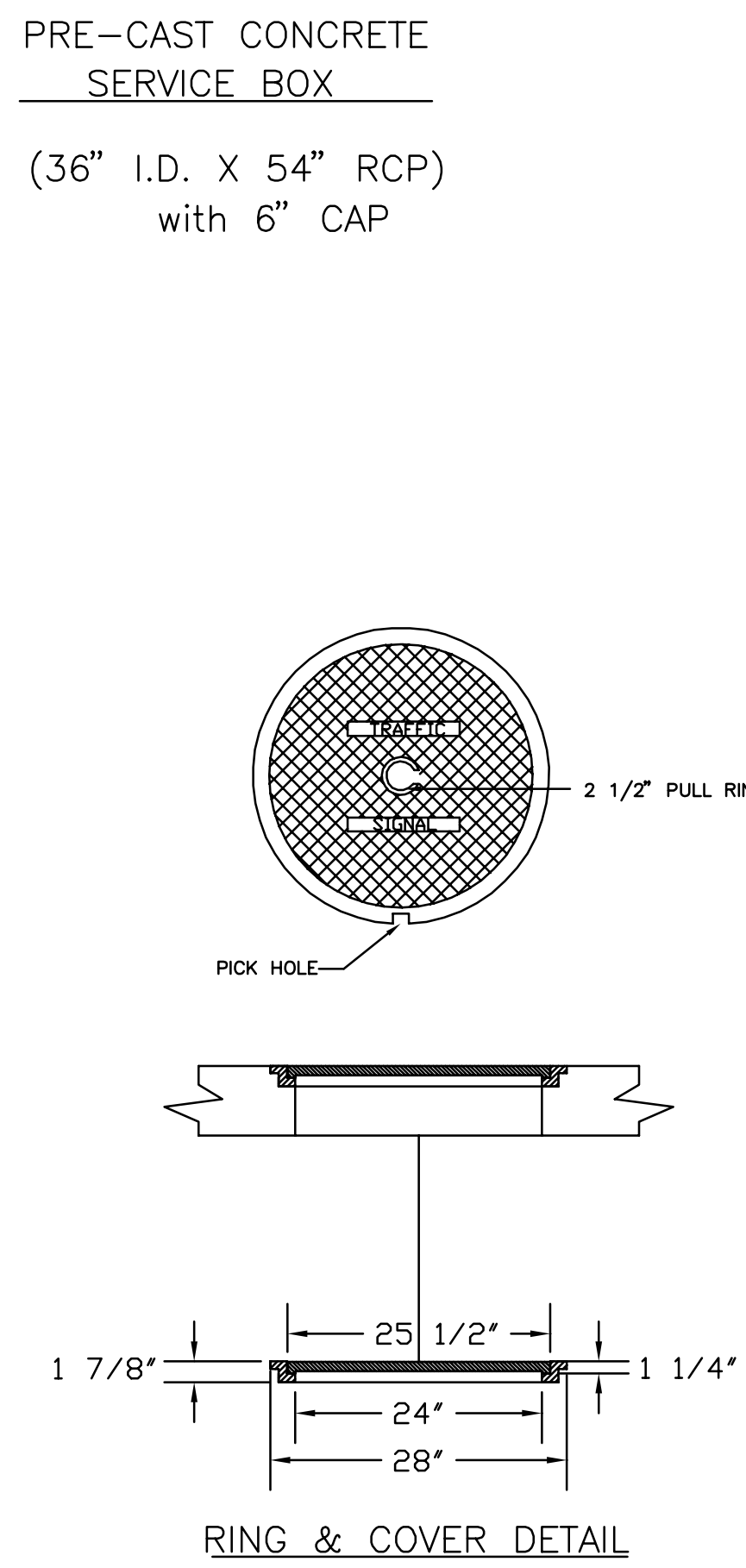
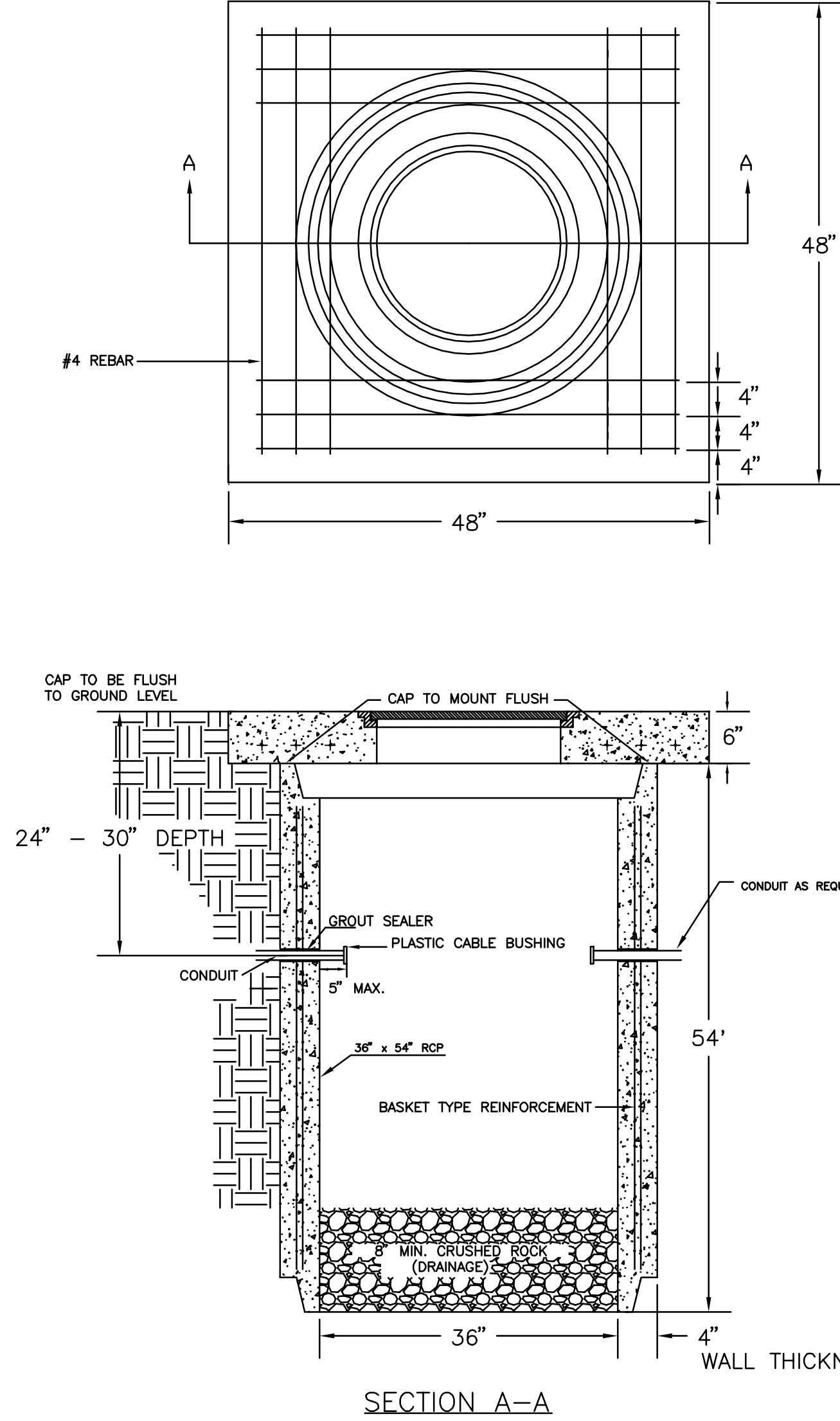
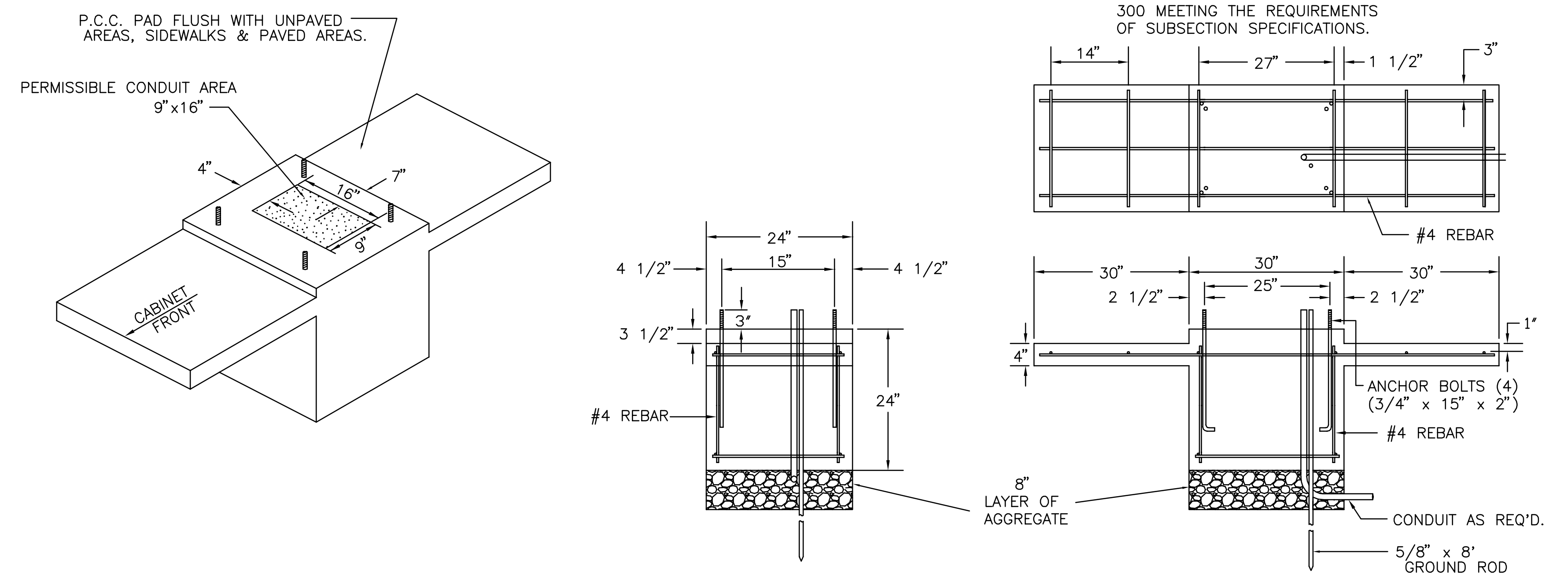


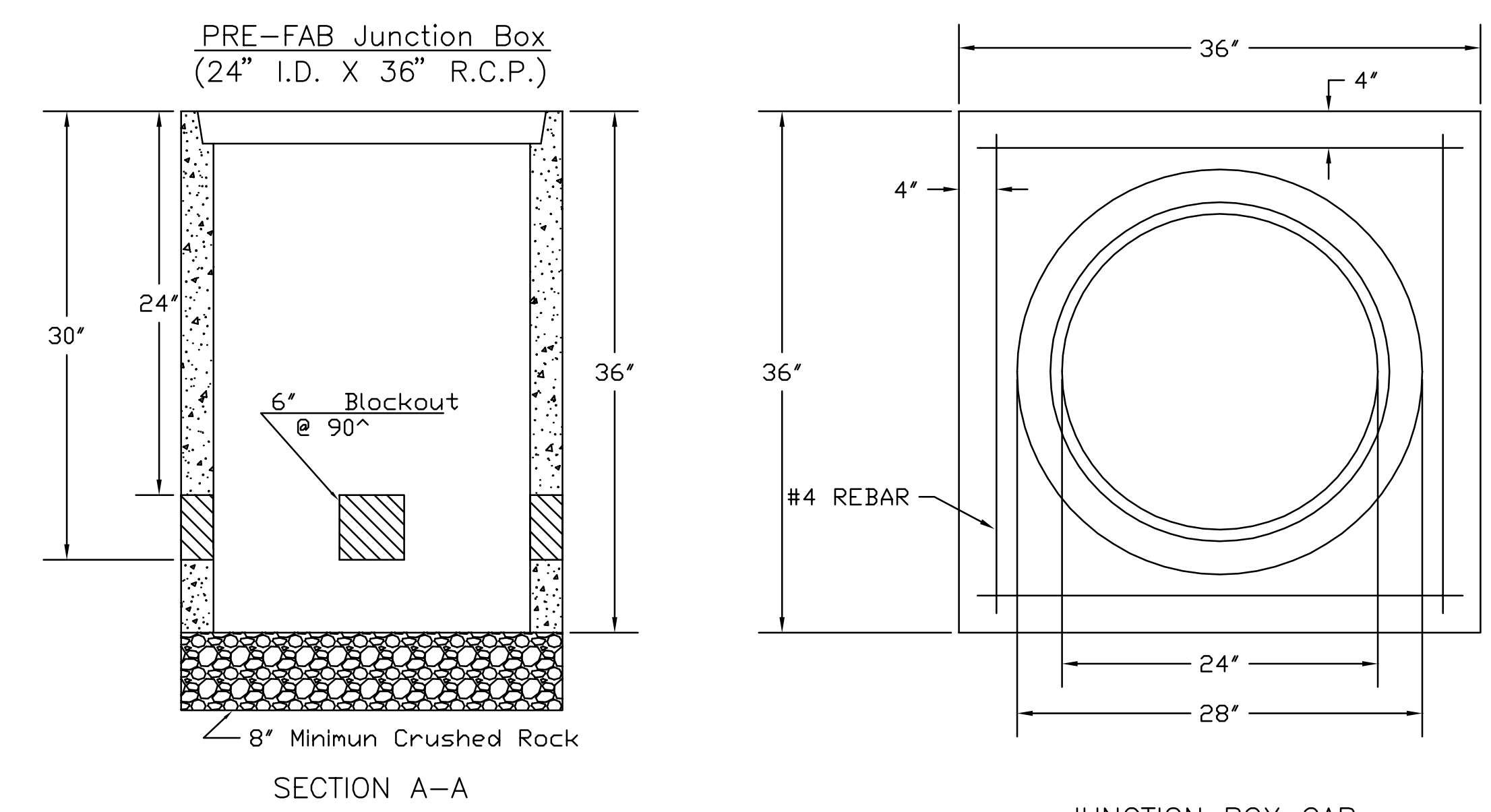
SERVICE BOX CONSTRUCTION/INSTALLATION DETAILS



170 CONTROLLER PAD DETAILS



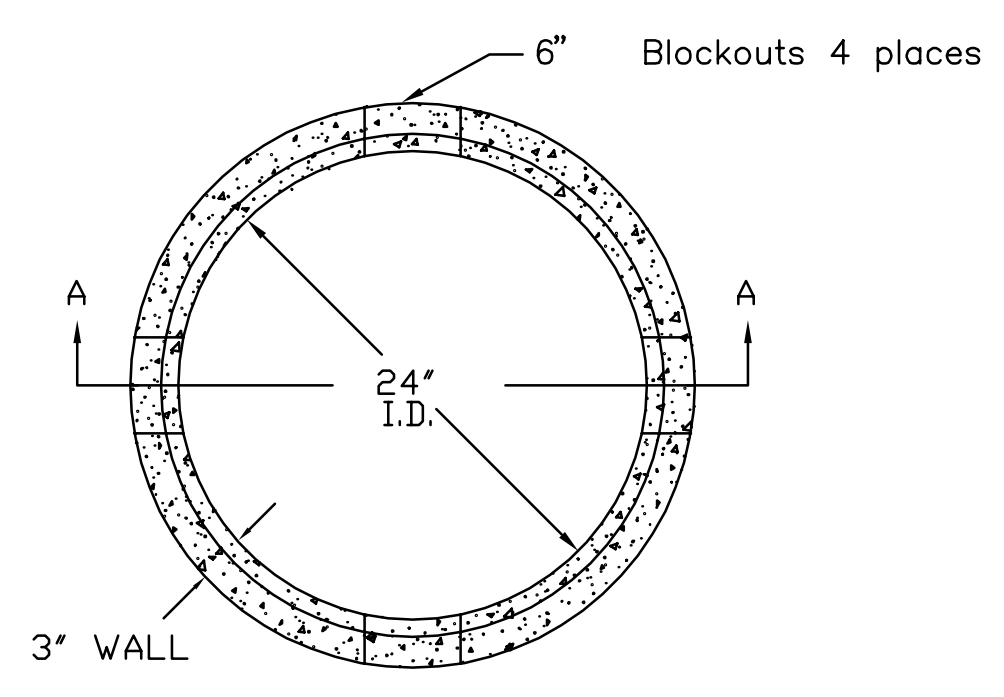
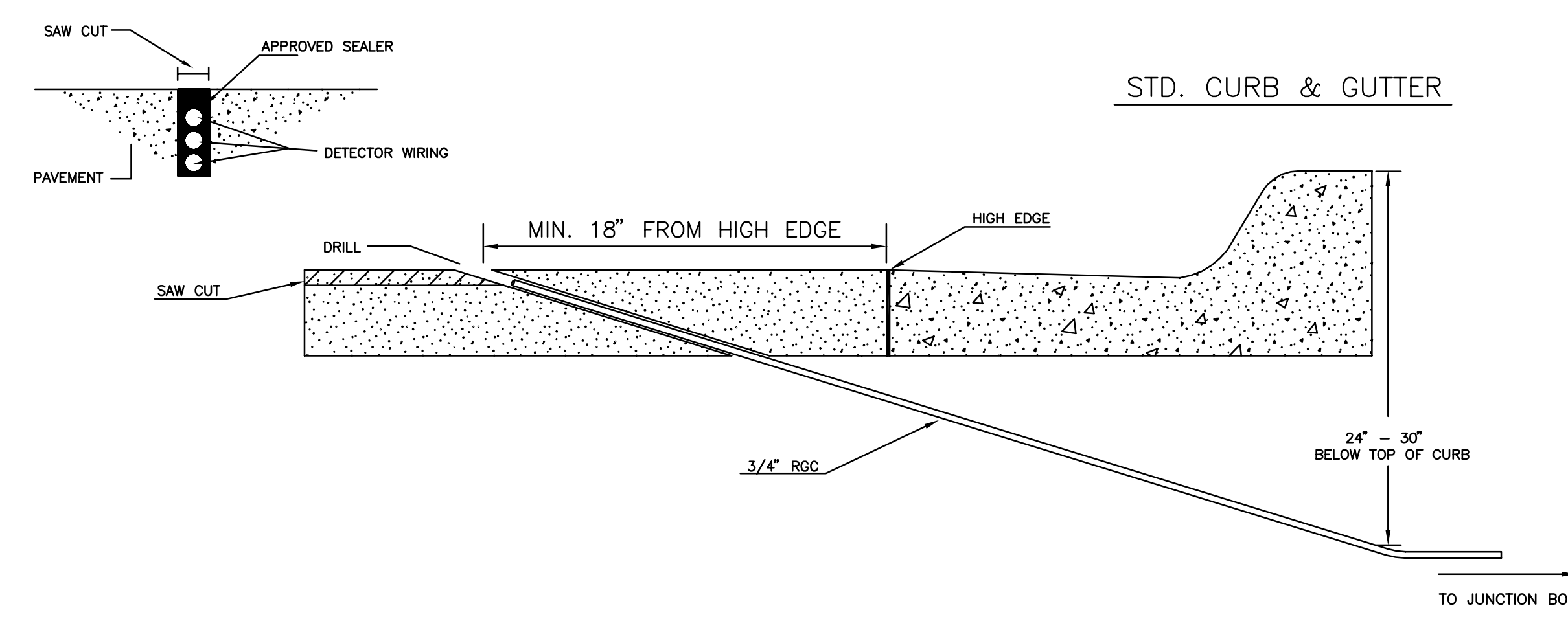
JUNCTION BOX DETAILS



JUNCTION BOX CAP  
36" x 36" x 6"  
TOP OF CAP TO BE FLUSH WITH GROUND LEVEL.

- NOTES:
- SERVICE & JUNCTION BOX:
1. CONDUIT CONNECTION TO BE FLUSH TO WITHIN 125 mm OF INSIDE FACE OF SIDE WALL, CONDUIT TO DRAIN INTO SERVICE BOX.
  2. CONDUIT CONNECTIONS TO SERVICE BOX SHALL BE TERMINATED WITH PLASTIC CABLE BUSHING.
  3. CONDUIT SHALL BE SEALED WITH APPROVED SEALER AT INSIDE WALL FACE.
  4. ALL SERVICE & JUNCTION BOXES TO HAVE 200 mm OF CRUSHED ROCK.
- TRENCHING:
1. DEPTH TO BE 30" MINIMUM WITH ROCK & STUBBLE FREE BACKFILL TO SERVE AS BEDDING MATERIAL. MAINTAIN MINIMUM CONDUIT DEPTH IN TRENCH.
  2. BACKFILL TO BE COMPACTED IN 6" LOOSE LIFTS BY HAND OR MECHANICAL TAMPING TO A 95% STANDARD DENSITY.
- CONDUIT:
1. SLOPE CONDUIT TO DRAIN AS DIRECTED BY THE ENGINEER.
  2. 3" RIGID STEEL CONDUIT BTWN. SERVICE BOXES.  
1 1/4" " " " BTWN. SERVICE & JUNCTION BOXES.  
3/4" " " " BTWN. JUNCTION BOXES.  
3/4" " " " BTWN. JUNCTION BOX & DETECTOR LOOP SAW CUT
- SERVICE/JUNCTION BOX, CONTROLLER PAD CONSTRUCTION/INSTALLATION DETAILS

CONDUIT/DETECTOR WIRE INSTALLATION DETAILS



\*\*SEE SERVICE BOX INSTALLATION FOR RING & COVER DETAILS.

REV. DATE	COMMENTS	INT

DSNR: BER OPER: SAW SCALE: 1=1.00  
 J:\SENTOUT\2004\04\06\001\07-Traffic\Signal\03-26-2004 11:23:00 am

	21ST STREET NORTH AND REGENCY LAKES	
	SERVICE/JUNCTION BOX, CONTROLLER PAD CONSTRUCTION/INSTALLATION DETAILS	
	PROJECT NUMBER 472-83954	
	DRAWN BY: T.M. DATE: MAY 97	SCALE NO SCALE
CITY OF WICHITA DEPARTMENT OF PUBLIC WORKS		
DIVISION OF TRAFFIC ENGINEERING		
WM. G. MCKINLEY P.E. TRAFFIC ENGINEER	SHEET 7 OF 8	

CITY ENGINEER'S OFFICE  
CITY HALL - SEVENTH FLOOR  
455 NORTH MAIN STREET  
WICHITA, KANSAS 67202  
(316) 268-4501  
(316) 268-4114 FAX