

BENCHMARKS:
 BM #1: COW BM at the SW corner of Pawnee Ave. and Maize Road.
 Elev. = 135.15 (City Datum)

BM #2: "□" in top of curb on the north side of Yosemite, 65' east of Maize Road.
 Elev. = 143.67 (City Datum)

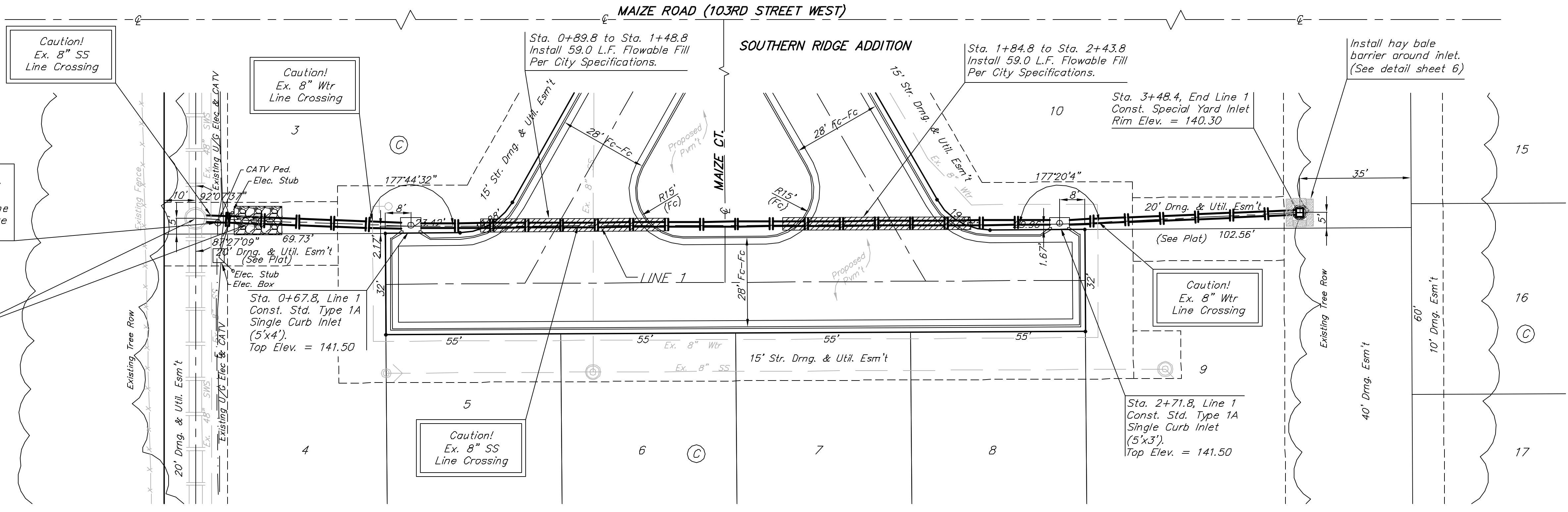
BM #3: COW BM at Shefford on the south side of Pawnee Ave.
 Elev. = 145.53 (City Datum)

Scale: 1" = 20' Horizontal
 1" = 5' Vertical
 • = Iron

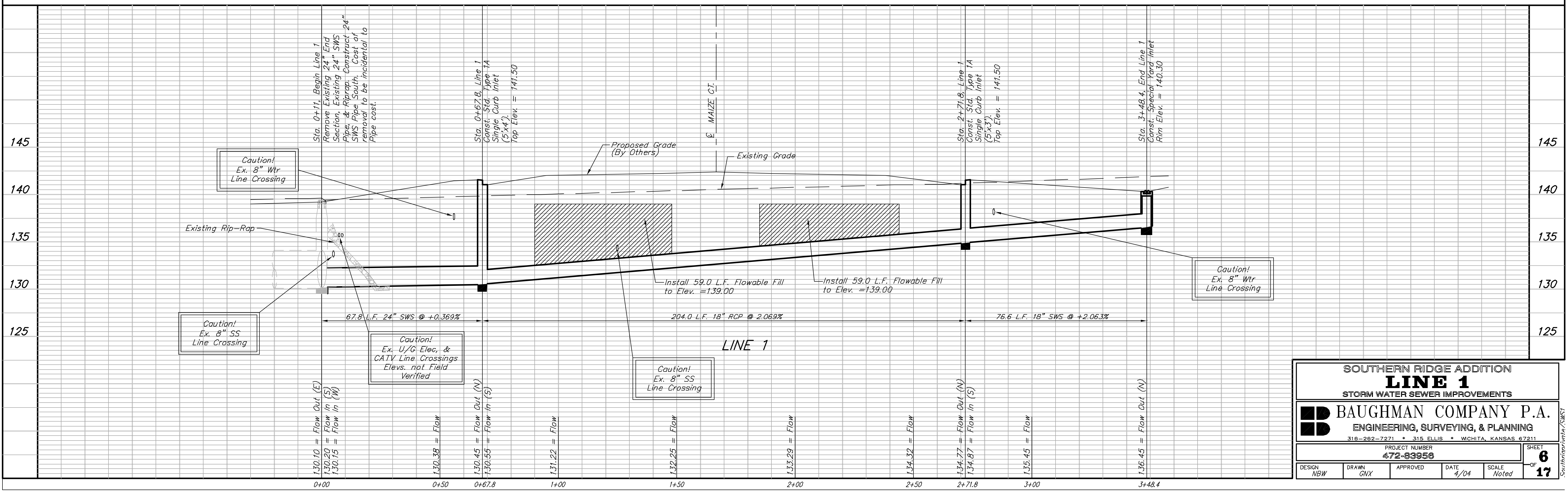
CAUTION! Existing Elec. and CATV Line Crossing. Contractor to contact Randy Truitt, Westar Energy, 261-6512 and Bryan Ring, Cox Comm., 262-4270 one week prior to construction to coordinate line adjustments as necessary.

Sta. 0+11, Begin Line 1 Remove Existing 24" End Section, Existing 24" SWS Pipe, & Riprap. Construct 24" SWS Pipe South. Cost of removal to be incidental to Pipe cost.

Remove trees ONLY as necessary for storm sewer construction and as approved by Engineer. Cost of removal to be incidental to lump sum bid item "Site Clearing & Restoration".



SOUTHERN RIDGE ADDITION



SOUTHERN RIDGE ADDITION
LINE 1
 STORM WATER SEWER IMPROVEMENTS

BAUGHMAN COMPANY P.A.
 ENGINEERING, SURVEYING, & PLANNING
 316-262-7271 • 315 ELLIS • WICHITA, KANSAS 67211

PROJECT NUMBER
472-93956

DESIGN NBW DRAWN GVX APPROVED DATE 4/04 SCALE Noted SHEET **6** OF **17**