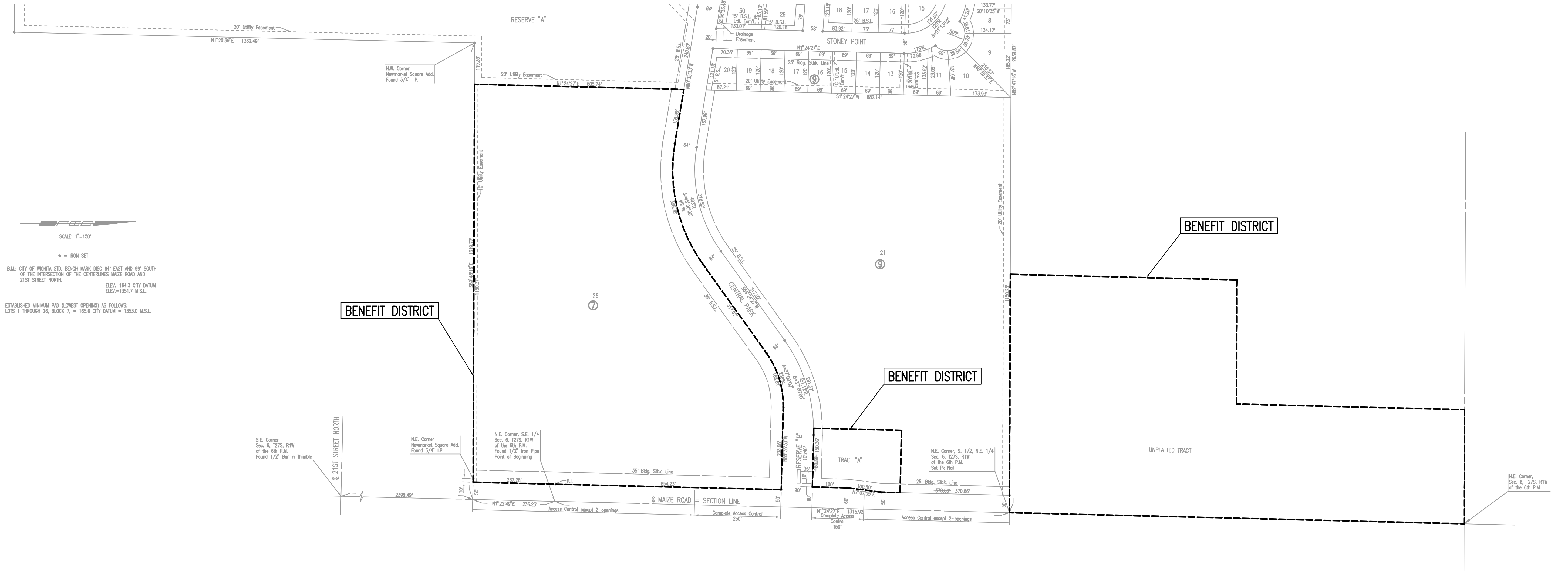


EVERGREEN
AN ADDITION TO WICHITA, SEDGWICK COUNTY, KANSAS



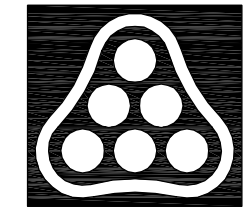
SCALE: 1"=150'

• = IRON SET

B.M.: CITY OF WICHITA STD. BENCH MARK DSC 84" EAST AND 99" SOUTH OF THE INTERSECTION OF THE CENTERLINES MAIZE ROAD AND 21ST STREET NORTH.
ELEV.=164.3 CITY DATUM
ELEV.=1351.7 M.S.L.

ESTABLISHED MINIMUM PAD (LOWEST OPENING) AS FOLLOWS:
LOTS 1 THROUGH 26, BLOCK 7, = 165.6 CITY DATUM = 1353.0 M.S.L.

DSNR: BER OPER: USL SCALE: 1"=150.00
Q:\2004\04094\Plat 03-01-2004 11:21:56 am



No.	Revision	By	Date
CITY OF WICHITA, KANSAS JAMES L. ARMOUR, P.E. - ACTING CITY ENGINEER 21ST STREET BOX EXTENSION BENEFIT DISTRICT CITY OF WICHITA PROJECT NO. 472-83957 Professional Engineering Consultants, P.A. 303 S. TOPEKA • WICHITA, KANSAS 67202 316-262-2691 • FAX 316-262-3003			
Designed by	BER	Job No.	35-04094-042
Drawn by		Date	FEBRUARY 2004
			Sht. 2 of 9