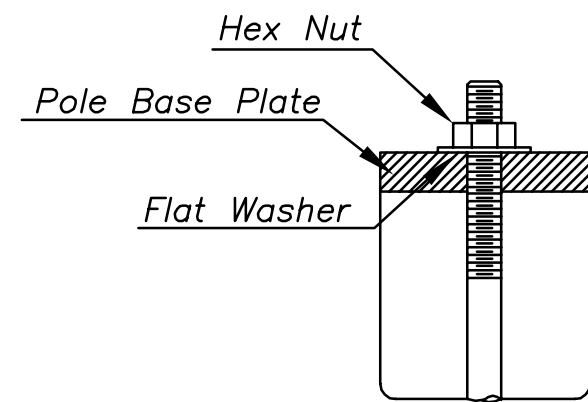
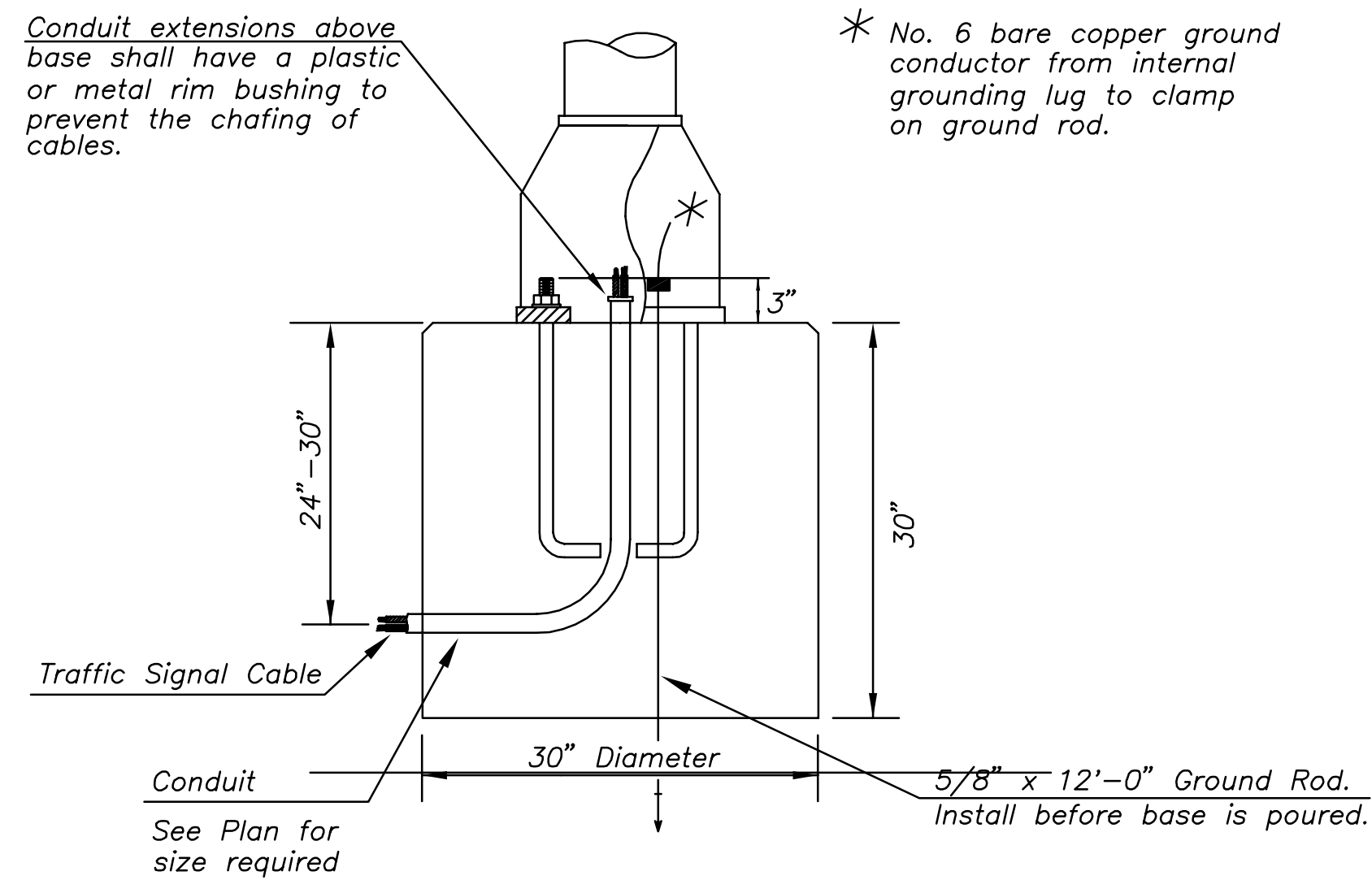
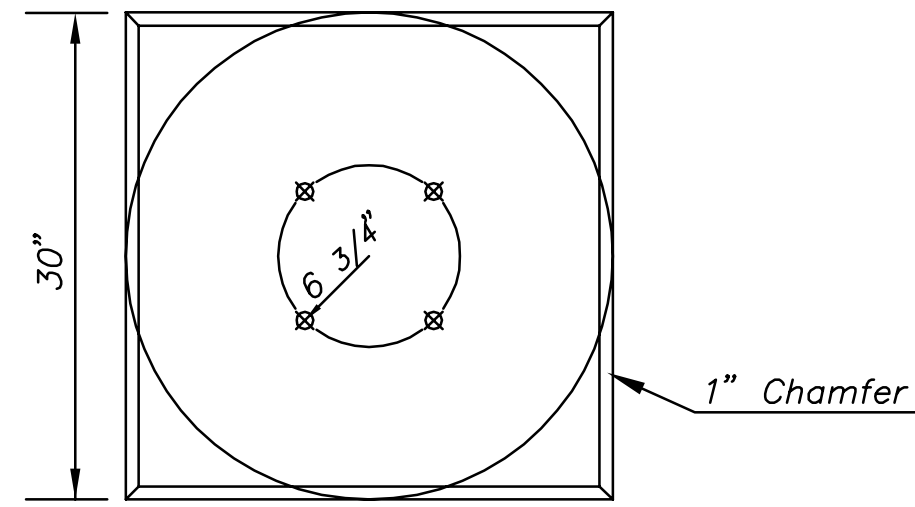


Use Keystone "No-Weld Number 1 Anti-Seize Compound" on all bolts & nuts.

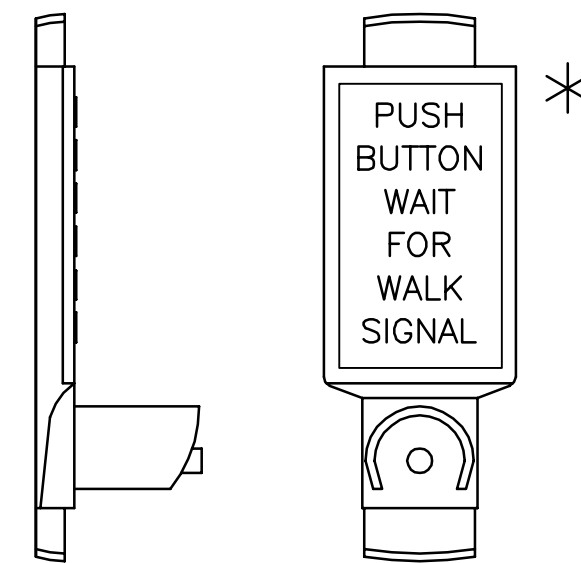


ANCHOR BOLT DETAIL



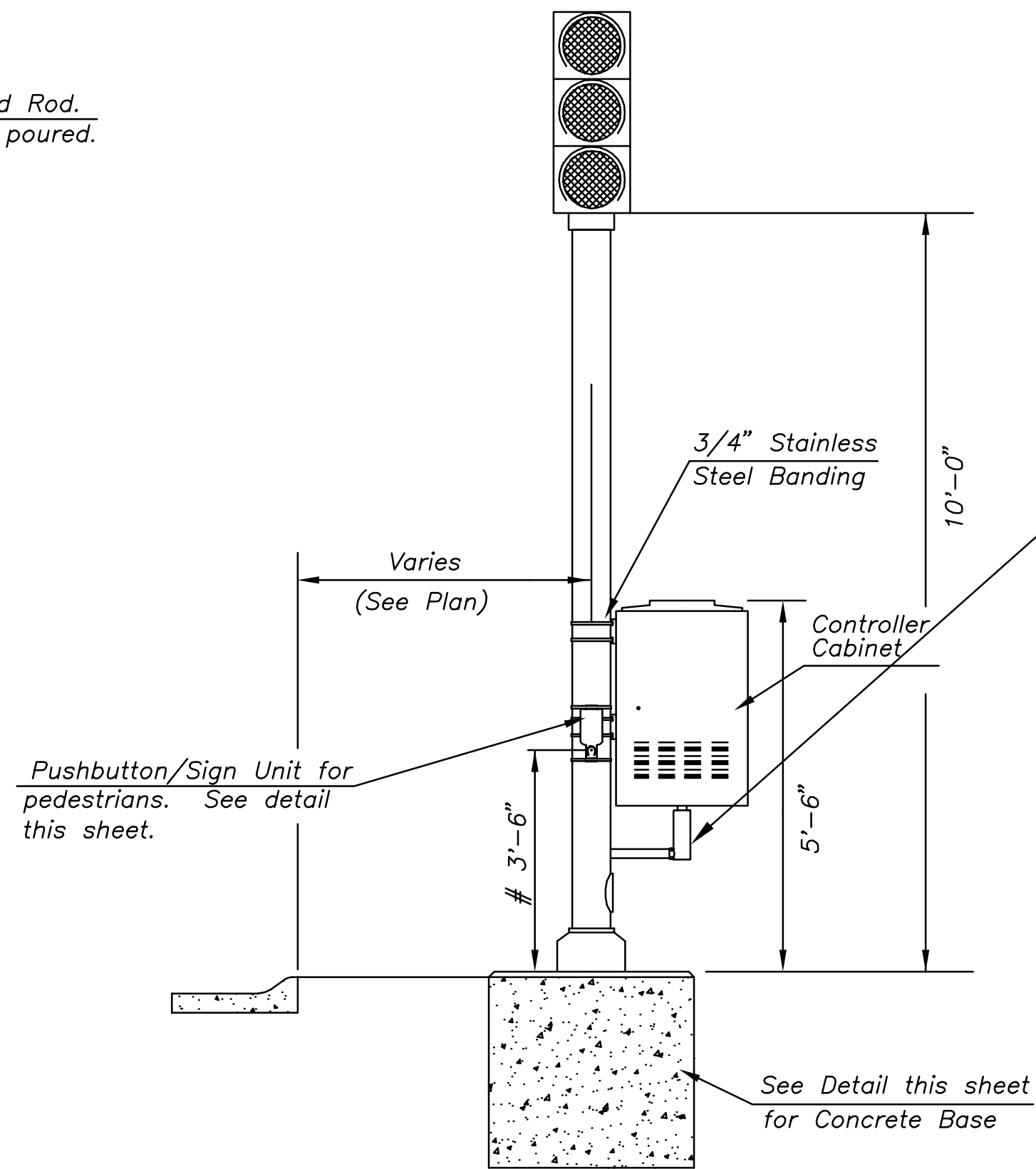
CONCRETE BASE DETAIL

*NOTE: MESSAGE TO BE CAST WITH HOUSING (ONE PIECE)

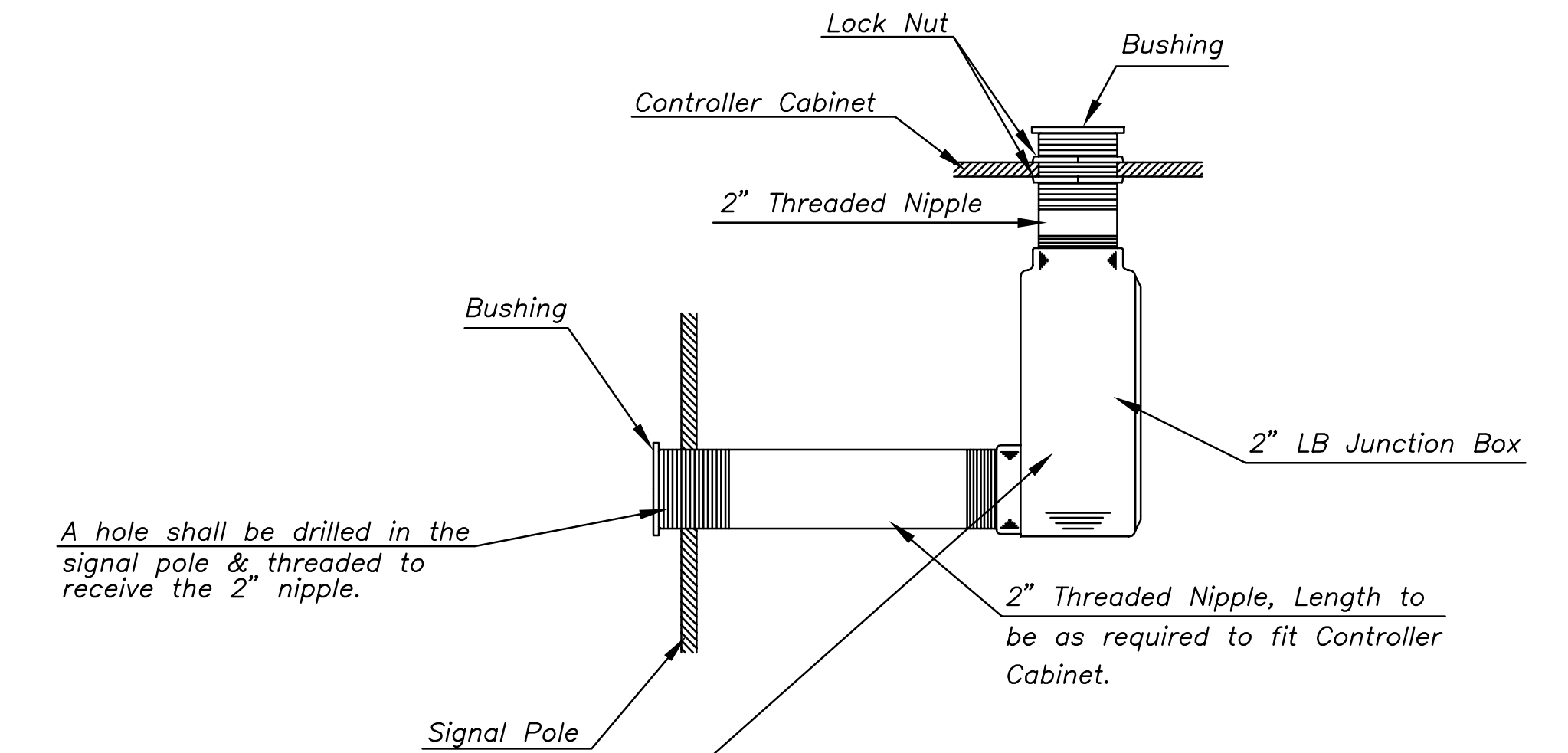


PEDESTRIAN PUSHBUTTON/SIGN UNIT DETAIL

INSTALL PEDESTRIAN PUSHBUTTON UNDERNEATH CORRESPONDING PEDESTRIAN SIGNAL HEAD ON SIDE OF POLE NEAREST CROSSWALK. UNIT SHALL BE FIRMLY ATTACHED TO THE SIDE OF POLE WITH 3/4" STEEL BANDS. SHARP ENDS SHALL BE FOLDED UNDER TO PREVENT INJURY TO PEDESTRIANS.



TRAFFIC SIGNAL PEDESTAL



From Sidewalk Finish Grade to Center of Pushbutton.