

PHASE 3A
PAVING AND INCIDENTAL DRAINAGE IN
REED'S COVE ADDITION

AN ADDITION TO THE CITY OF WICHITA
SEDGWICK COUNTY, KANSAS

PROJECT NO. 472-83968

JIM ARMOUR, ACTING CITY ENGINEER

OCA - 765865

GENERAL NOTES

1. UNLESS SHOWN OR STATED OTHERWISE ON THESE DRAWINGS, MATERIALS AND CONSTRUCTION SHALL BE IN ACCORDANCE WITH CITY OF WICHITA CONCRETE PAVEMENT AND ASPHALTIC CONCRETE PAVEMENT SPECIFICATIONS.

2. THE CONTRACTOR SHALL BE RESPONSIBLE FOR PRESERVING PROPERTY IRONS. THE CONTRACTOR WILL BE REQUIRED TO RE-ESTABLISH ANY PROPERTY IRONS WHICH ARE DAMAGED OR DESTROYED BY HIS CONSTRUCTION OPERATIONS. SUCH IRONS SHALL BE RE-ESTABLISHED BY A LICENSED LAND SURVEYOR IN ACCORDANCE WITH STATE LAWS.

3. EXISTING UTILITIES AND THEIR LOCATIONS, AS SHOWN ON THE PLANS REPRESENT THE BEST INFORMATION OBTAINABLE FOR DESIGN. LOCATION INFORMATION HAS BEEN OBTAINED FROM THE VARIOUS UTILITY COMPANIES AND IS EITHER FROM COMPANY RECORD DRAWINGS OR COMPANY PROVIDED FIELD LOCATIONS. THE PLAN LOCATIONS SHOWN ARE NOT GUARANTEED. ADDITIONAL EXISTING UTILITIES MAY ALSO BE ENCOUNTERED.

4. CONTRACTOR WILL BE REQUIRED TO PROVIDE A MINIMUM ADVANCE NOTICE OF FORTY-EIGHT (48) HOURS TO UTILITY COMPANIES PRIOR TO STARTING ANY EXCAVATION AS FOLLOWS:

KANSAS ONE-CALL 1-800-344-7233
OR 687-2470 (LOCAL WICHITA)

THE CONTRACTOR MUST NOTIFY THE FOLLOWING IN CASE OF AN EMERGENCY:

SBC (TELEPHONE)	800-870-8390
COX COMMUNICATIONS (CABLE)	262-0661
WESTAR (ELECTRIC)	383-8600
KANSAS GAS SERVICE (GAS)	832-3101
CITY OF WICHITA WATER & SEWER MAINT.	262-6000
AQUILA (GAS)	946-0096

5. RUBBLE FROM THE REMOVAL OF MISCELLANEOUS STRUCTURES AND EXCESS EXCAVATION WHICH IS TO BE WASTED SHALL BE DISPOSED OF ON SITES TO BE PROVIDED BY THE CONTRACTOR. THESE SITES SHALL BE APPROVED BY THE ENGINEER AS TO SUITABILITY, APPEARANCE AND SITE LOCATION. LOCATIONS THAT, IN THE OPINION OF THE ENGINEER, WILL LEAVE AN UNSIGHTLY APPEARANCE WILL NOT BE APPROVED. ALL DISPOSAL SITES MUST BE APPROVED BY THE KANSAS DEPARTMENT OF HEALTH AND ENVIRONMENT. MATERIAL EITHER STOCKPILED OR DISPOSED OF IN A FLOOD PLAIN WOULD REQUIRE A KANSAS STATE BOARD OF AGRICULTURE PERMIT. ANY MATERIAL DUMPED IN WATERS OF THE UNITED STATES OR WETLANDS IS SUBJECT TO U.S. CORPS OF ENGINEERS PERMITTING REGULATIONS. ANY MATERIAL BURIED OR STOCKPILED BEYOND APPROVED CONSTRUCTION LIMITS WOULD REQUIRE ADDITIONAL ARCHAEOLOGICAL INVESTIGATIONS UNLESS BURIED IN A PREVIOUSLY APPROVED BORROW LOCATION.

6. A SAW CUT OF AT LEAST ONE-HALF THE DEPTH OF THE EXISTING SURFACE COURSES OR ONE-FOURTH THE DEPTH OF THE EXISTING TOTAL PAVEMENT THICKNESS SHALL BE PROVIDED AT LOCATIONS WHERE PROPOSED CONSTRUCTION ABUTS AN EXISTING SURFACE OR PAVEMENT FOR WHICH PARTIAL REMOVAL OF THAT SURFACE OR PAVEMENT IS REQUIRED. SAW JOINT TO FACILITATE REMOVAL WITHIN THREE (3) FEET OF EXISTING JOINTS WILL NOT BE PERMITTED AND FOR SUCH INSTANCES THE LIMITS OF REMOVAL SHALL EXTEND TO THE EXISTING JOINT. SUCH SAW CUTS WILL NOT BE PAID FOR DIRECTLY AND THIS COST SHALL BE CONSIDERED AS SUBSIDIARY TO THE REMOVAL OF SURFACE OR PAVEMENT.

7. CONTRACTOR SHALL SEED ALL DISTURBED AREAS WITH AN ANNUAL RYE GRASS AT A RATE OF 250LBS./ACRE.

8. THE CONTRACTOR SHALL COORDINATE WITH THE DEVELOPER AND ENGINEER ON THE REMOVAL OF TREES OUTSIDE OF BACK OF CURB. NO TREES SHALL BE REMOVED PRIOR TO A MEETING ON SITE WITH THE CITY, DEVELOPER AND ENGINEER.

9. EQUIPMENT AND CONSTRUCTION MATERIALS SHALL REMAIN OUT OF AND AWAY FROM TREE DRIFTLINES SO AS TO NOT COMPACT THE ROOT ZONE OR DAMAGE THE TREE.

10. OTHER CONSTRUCTION MAY BE UNDER WAY SIMULTANEOUSLY WITH THIS PROJECT. THE CONTRACTOR SHALL COORDINATE WITH ANY CONTRACTORS CONSTRUCTING OTHER PHASES.

11. ALL TOPSOIL SHALL BE STRIPPED IN AREAS OF CUT/FILL AND STOCKPILED

12. A 6" LAYER OF TOPSOIL IS TO BE PLACED OVER ALL AREAS WHERE THE VIRGIN GRADE NO LONGER EXISTS WITH THE EXCEPTION OF PAVED AREAS. THIS INCLUDES BERMS, SWALES AND SLOPES. NOTE: THE FINISHED GRADE INDICATES THE SURFACE ELEVATION AFTER THE 6" LAYER OF TOPSOIL HAS BEEN PLACED.

13. TRANSITION CURB FROM FULL HEIGHT COMBINATION CURB AND GUTTER TO ROLL CURB AND GUTTER SHALL BE PAID FOR AS LINEAL FEET STANDARD CURB AND GUTTER (3 5/8" RL & 1 1/2")

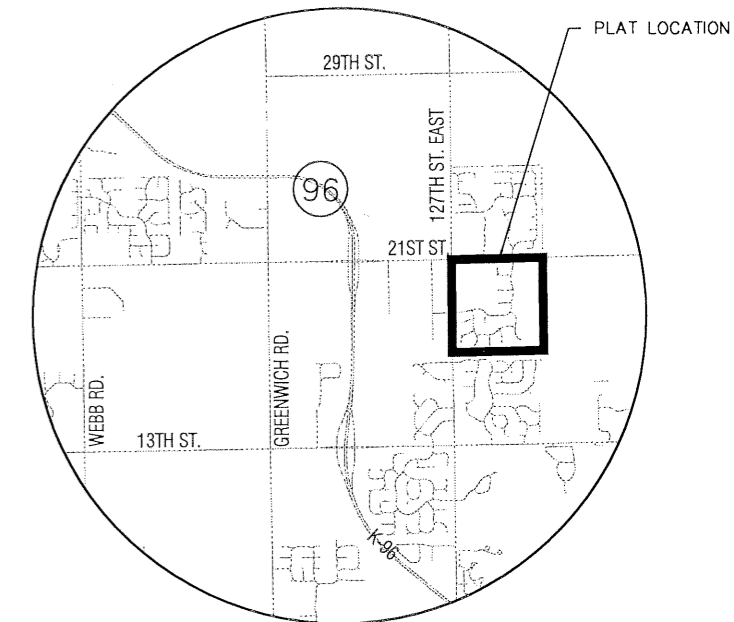
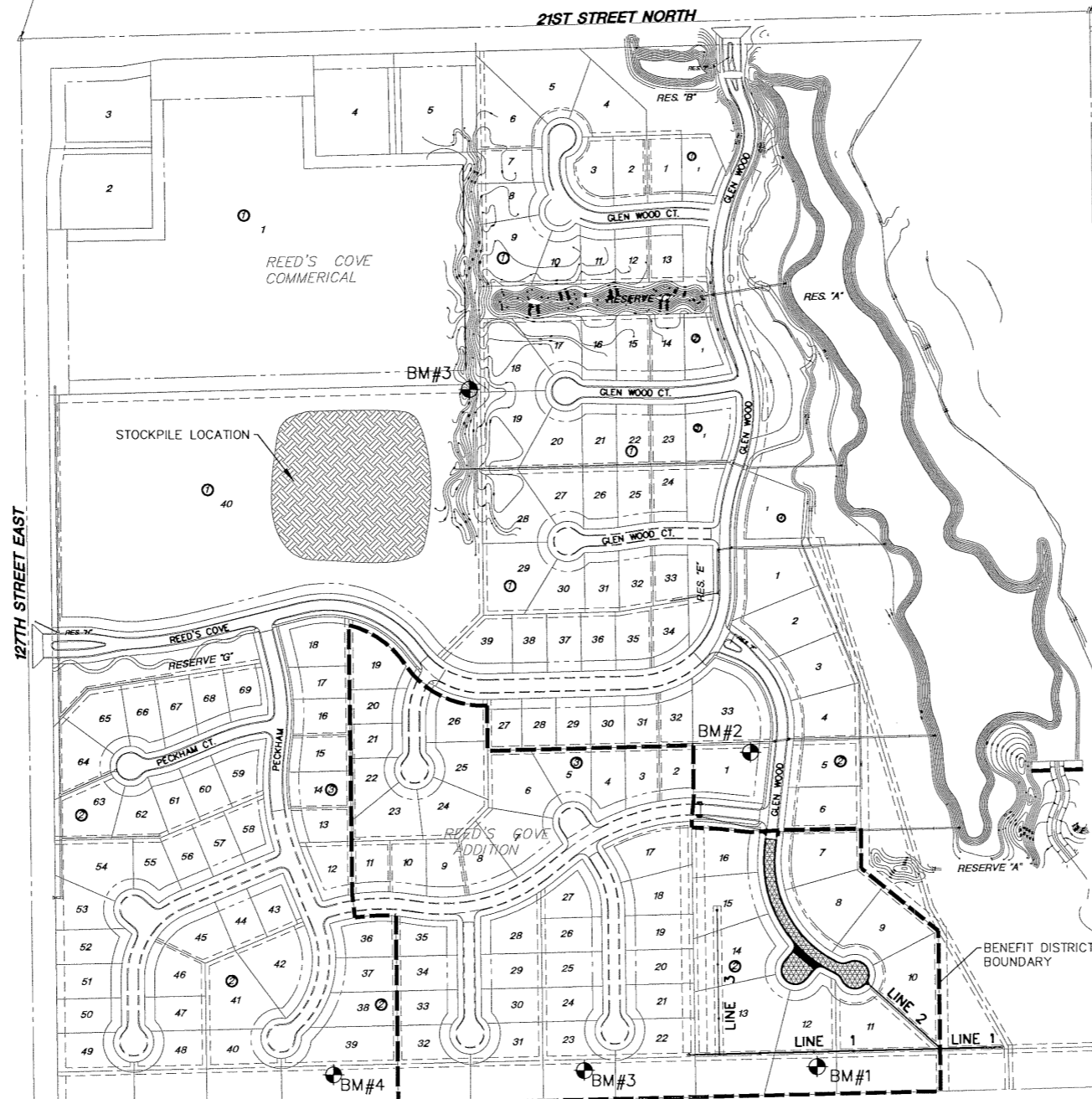
LENGTH OF PROJECT	
29' BK.-BK.	431 L.F.
EARTHWORK SUMMARY	
EXCAVATION	2860 C.Y.
LOOSE FILL	10,390 C.Y.
COMP. FILL	3,410 C.Y.
*CONT. FURN.	14,500 C.Y.

*MATERIAL STOCKPILED ON-SITE

SW. Cor., NW ¼, Sec. 11,
T27S, R2E, 6th P.M.,
Fnd. ¾" Pipe in Thimble
N1697211.0539
E1691552.4949

NW. Cor., NW ¼, Sec. 11,
T27S, R2E, 6th P.M.,
Fnd. ¾" Pipe in Thimble
N1699866.9619
E1691512.6299

NE. Cor., NW ¼, Sec. 11,
T27S, R2E, 6th P.M.,
Fnd. ¾" Pipe
N1699933.6799
E1694161.6279



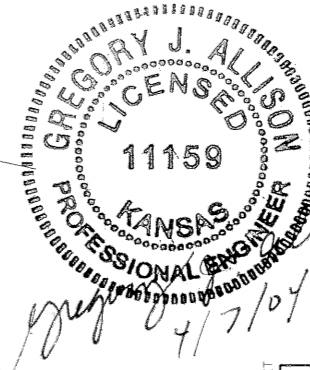
VICINITY MAP

INDEX TO DRAWINGS

SHEET NO.	DESCRIPTION
1	TITLE SHEET
2	TYP. PAVING SECTIONS
3	VALLEY GUTTER DETAILS
4	INLET HOOKUP DETAILS
5	PAVING PLANS
6-8	STORM WATER DETAILS
9-12	SWS LINES 1-3
13	DITCH GRADING PLAN
14-18	BMP DETAILS
19-21	CROSS SECTIONS
22	FINAL PLAT

BENCHMARKS

- BM #1 1356.100 RR SPIKE IN N. FACE N. H-POLE, 4TH H-POLE EAST OF 127TH ST. EAST, 1940'+/- E. & 86'+/- NORTH OF W 1/4 COR SEC 11, T 27 S, R 2 E.
- BM #2 1354.300 "T" POST 15'+/- N. & 15'+/- W. OF SE COR LOT 1 BLOCK 3, REED'S COVE.
- BM #3 1364.24 RR SPIKE IN N. FACE N. H-POLE, 3RD H-POLE EAST OF 127TH ST. EAST, 1362'+/- E. & 85'+/- NORTH OF W 1/4 COR SEC 11, T 27 S, R 2 E.
- BM #4 1370.26 RR SPIKE IN N. FACE N. H-POLE, 2ND H-POLE EAST OF 127TH ST. EAST, 742'+/- E. & 84'+/- NORTH OF W 1/4 COR SEC 11, T 27 S, R 2 E.



SCALE: 1" = 200'

SE. Cor., NW ¼, Sec. 11,
T27S, R2E, 6th P.M.,
Fnd. Stone
N1697273.5409
E1694206.3599



REED'S COVE ADDITION
PROJECT NAME

PAVING PLANS - PHASE 3A
SHEET TITLE

DFL DESIGN BY:	DMU DRAWN BY:	GJA CHECKED BY:
APRIL 2004 DATE	02121 JOB NO.	1 / 22 SHEET/OF