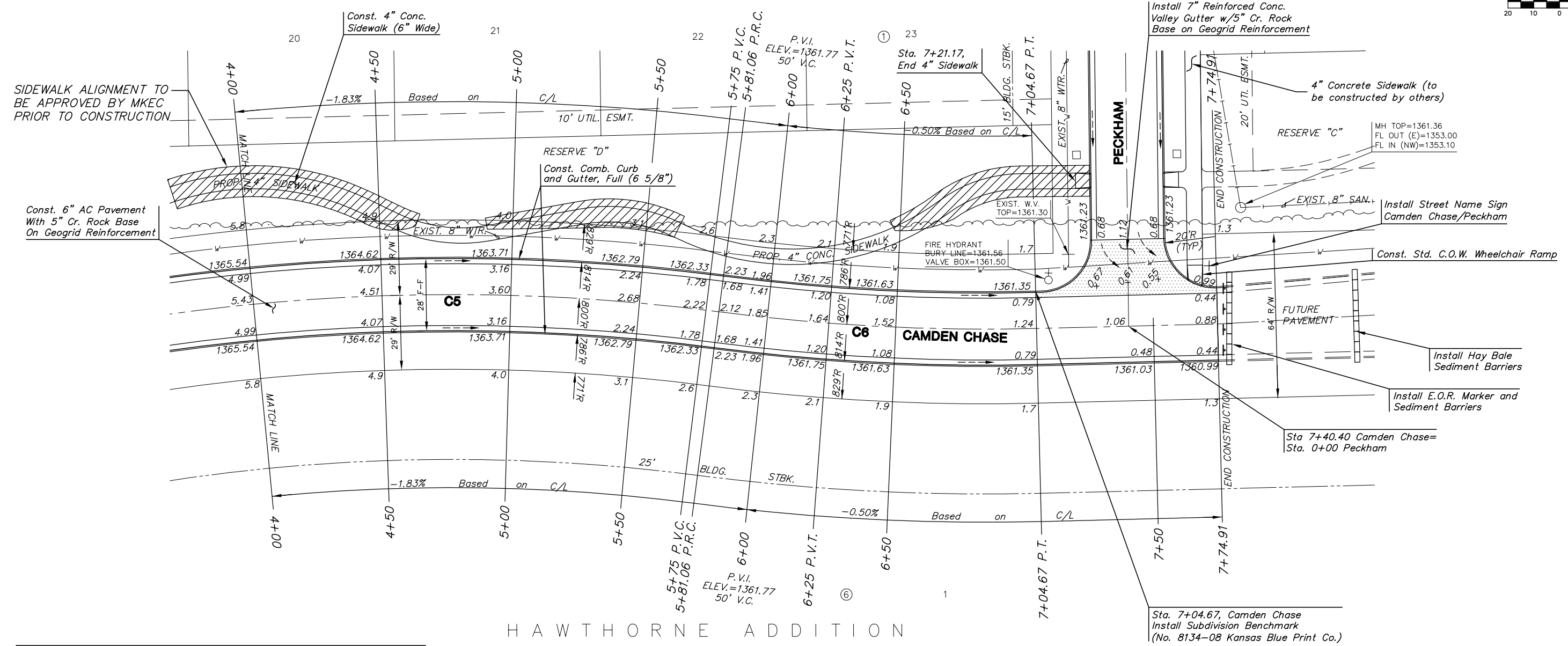


HAWTHORNE ADDITION



HAWTHORNE ADDITION

CURVE TABLE-C5

$\Delta = 18'40'36''$ $R = 800.00'$ $T = 131.55'$ $L = 260.78'$ $LC = 259.62'$

CURVE DATA BASED ON CENTERLINE $\Delta/2 = 09'20'18''$

STATION	ARC	CHORD LENGTH		DEFLECTION	TOTAL DEFLECTION
		8'Off LtCb	8'Off RtCb		
3+20.28	-	-	-	00°00'00"	00°00'00"
3+50.00	29.72'	30.54'	28.90'	01°03'51"	01°03'51"
3+75.00	25.00'	25.69'	24.31'	00°53'43"	01°57'34"
4+00.00	25.00'	25.69'	24.31'	00°53'43"	02°51'17"
4+25.00	25.00'	25.69'	24.31'	00°53'43"	03°45'00"
4+50.00	25.00'	25.69'	24.31'	00°53'43"	04°38'43"
4+75.00	25.00'	25.69'	24.31'	00°53'43"	05°32'26"
5+00.00	25.00'	25.69'	24.31'	00°53'43"	06°26'09"
5+25.00	25.00'	25.69'	24.31'	00°53'43"	07°19'52"
5+50.00	25.00'	25.69'	24.31'	00°53'43"	08°13'34"
5+75.00	25.00'	25.69'	24.31'	00°53'43"	09°07'17"
5+81.06	6.06'	6.22'	5.89'	00°13'01"	09°20'18"

Def/Ft = 11.45916 Min.

CURVE TABLE-C6

$\Delta = 08'51'11''$ $R = 800.00'$ $T = 61.93'$ $L = 123.61'$ $LC = 123.49'$

CURVE DATA BASED ON CENTERLINE $\Delta/2 = 04'25'35''$

STATION	ARC	CHORD LENGTH		DEFLECTION	TOTAL DEFLECTION
		8'Off LtCb	8'Off RtCb		
5+81.06	-	-	-	00°00'00"	00°00'00"
6+00.00	18.94'	18.42'	19.46'	00°40'42"	00°40'42"
6+25.00	25.00'	24.31'	25.69'	00°53'43"	01°34'25"
6+50.00	25.00'	24.31'	25.69'	00°53'43"	02°28'07"
6+75.00	25.00'	24.31'	25.69'	00°53'43"	03°21'50"
7+00.00	25.00'	24.31'	25.69'	00°53'43"	04°15'33"
7+04.67	4.67'	4.54'	4.80'	00°10'02"	04°25'36"

Def/Ft = 2.14859 Min.

SUBDIVISION BENCH MARKS

NO.	STREET AND STATION	FROM CL	DESCRIPTION	ELEVATIONS
1	CAMDEN CHASE, STA. 7+04.67	14.5' LT	SOUTHWEST END OF RETURN AT CAMDEN CHASE & PECKHAM	

NOTE: CONTRACTOR SHALL INSTALL SUBDIVISION BENCH MARKS ("FLAT SURVEY MARKERS NO. 8134-08 3" TOP DIAMETER" PROVIDED BY KANSAS BLUE PRINT CO., INC.) COSTS TO BE CONSIDERED SUBSIDIARY TO CONSTRUCTION OF COMBINED CURB AND GUTTER.

= TREE REMOVAL (8' MAX. WIDTH)

NOTE: TOP OF CURB ELEVATIONS SHOWN ARE FOR FULL CURB. CONSTRUCT CURB AND GUTTER AS NOTED.

NOTE: CONTRACTOR TO COORDINATE TREE TRIMMING AND/OR REMOVAL, IF NECESSARY, WITH THE ENGINEER/OWNER. NO TREES SHALL BE REMOVED WITHOUT PRIOR APPROVAL OF THE ENGINEER OR OWNER.

MKEC
ENGINEERING CONSULTANTS
411 N. WEBB ROAD
WICHITA, KS. 67206
316-684-9600

HAWTHORNE ADDITION-PHASE 1
PROJECT NAME

PAVING PLANS
SHEET TITLE

DESIGN BY: BSH DRAWN BY: DMU CHECKED BY: DRK

DATE: MARCH 2003 JOB NO.: 02167 SHEET/OF: 7 / 19