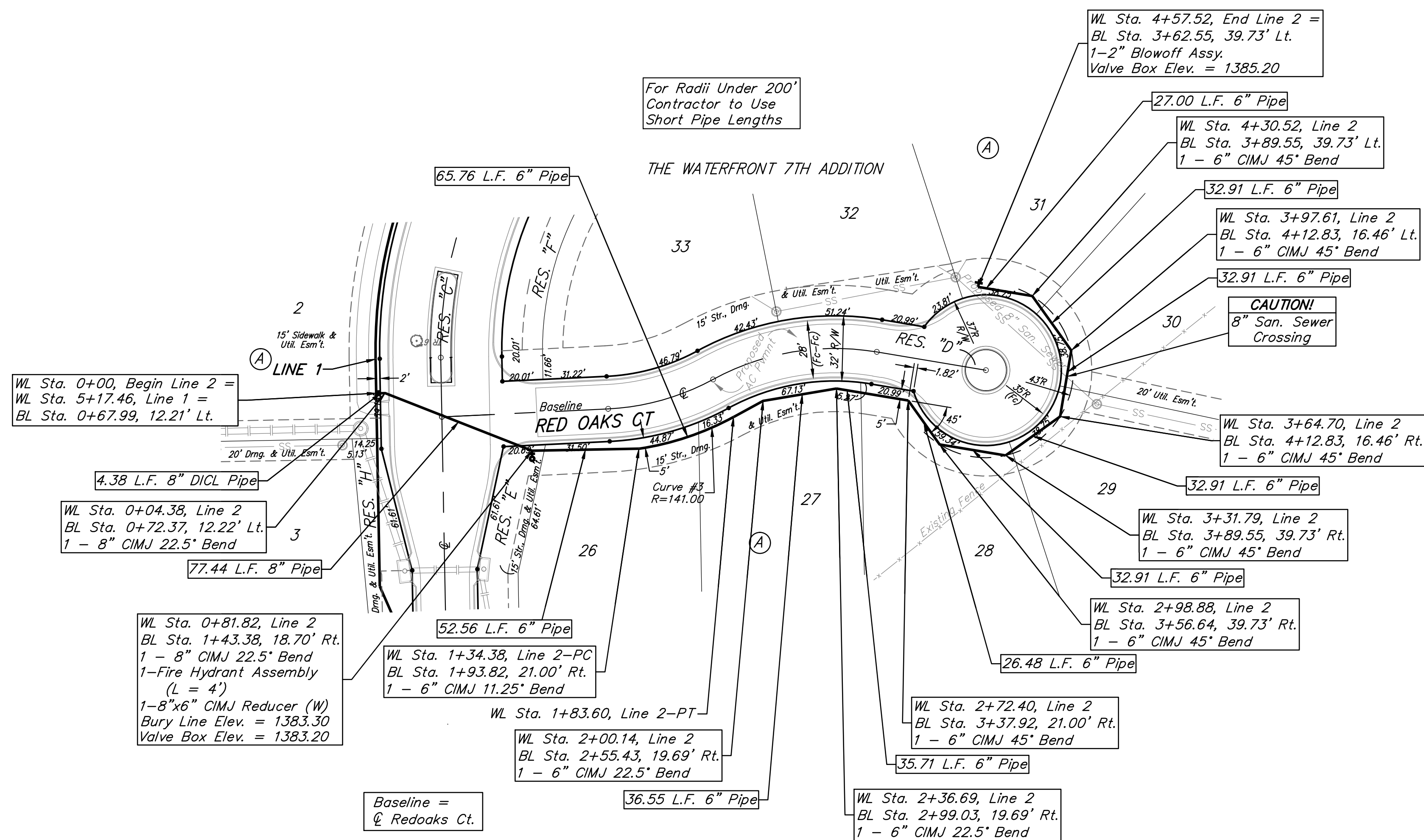


BENCHMARKS

BM #1:
 "□" Chiseled on Top of Curb.
 West End of South Median Curb
 within Castlewood
 Elevation = 1380.50 (NAVD 88)

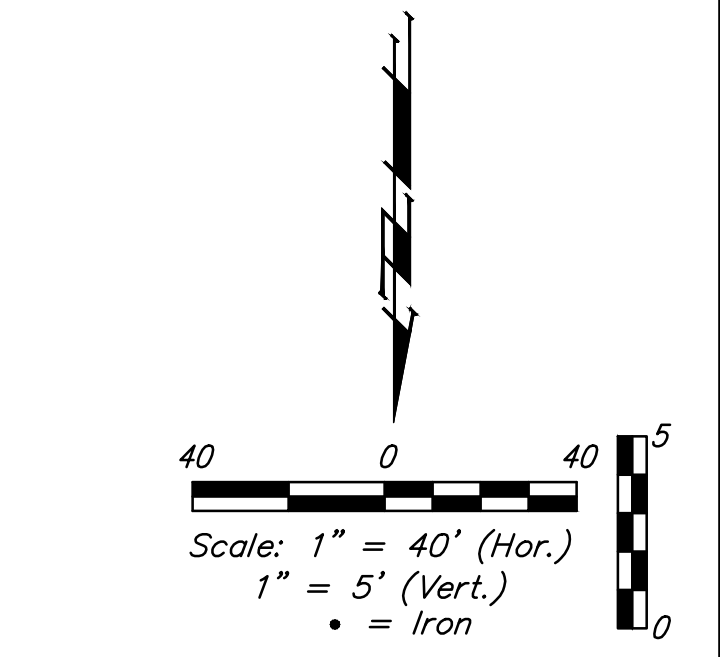
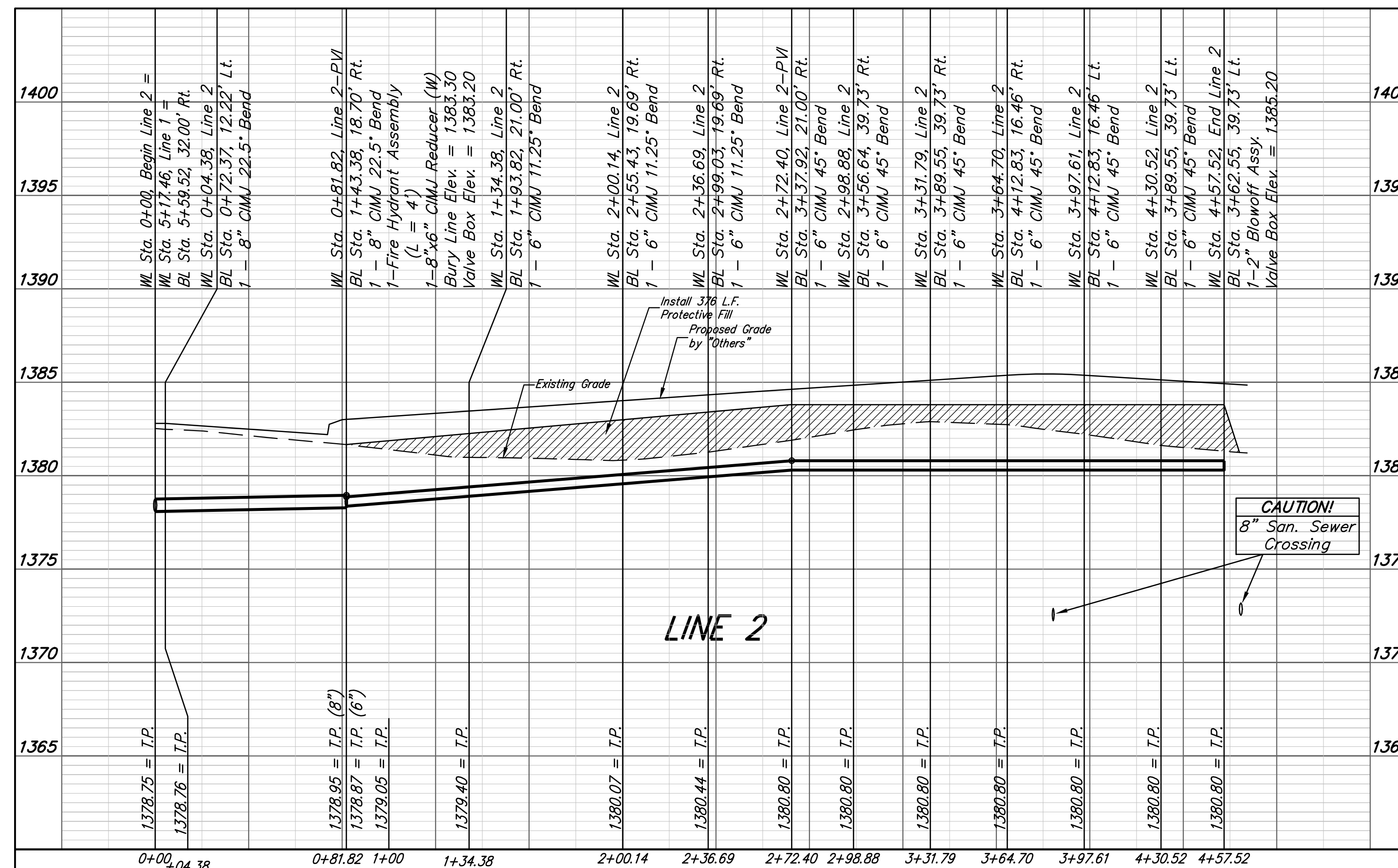
BM #2
 "X" Chiseled on Back of Walk.
 Near the Southeast corner of
 Lot 2, Block A, The Waterfront
 7th Addition
 Elevation = 1381.88 (NAVD 88)

BM #3
 "□" Chiseled on Back of Walk.
 Northeast corner of parking lot
 within Lot 1, Block 1, The
 Waterfront 4th Addition
 Elevation = 1389.50 (NAVD 88)



Curve #3
 Curve Data Based on Centerline of Pipe
 Rad. = 141' Delta = 20'00'02" Tangent = 24.86'
 Arc = 49.22' L.C. = 48.97' Def./Ft. = 12.19051 Min.

Station	Arc	Chord 8' Right	Defl.	Total Defl.
1+34.38	-	-	0'00'00"	0'00'00"
1+50.00	15.62'	16.50'	3'10'25"	3'10'25"
1+75.00	25.00'	26.38'	5'04'46"	8'15'11"
1+83.60	8.60'	9.09'	1'44'50"	10'00'01"



Baughman

The Waterfront 7th Addition
LINE 2
 Water Distribution System

Baughman Company, P.A. 315 Ellis St. Wichita, KS 67211 P 316-262-7271 F 316-262-0149
 ENGINEERING | SURVEYING | PLANNING | LANDSCAPE ARCHITECTURE

PROJECT NUMBER	DESIGN AEG DRAWN JAK
REVISIONS:	APPROVED DATE 1/08/15
	SCALE Noted SHEET

7 OF 16