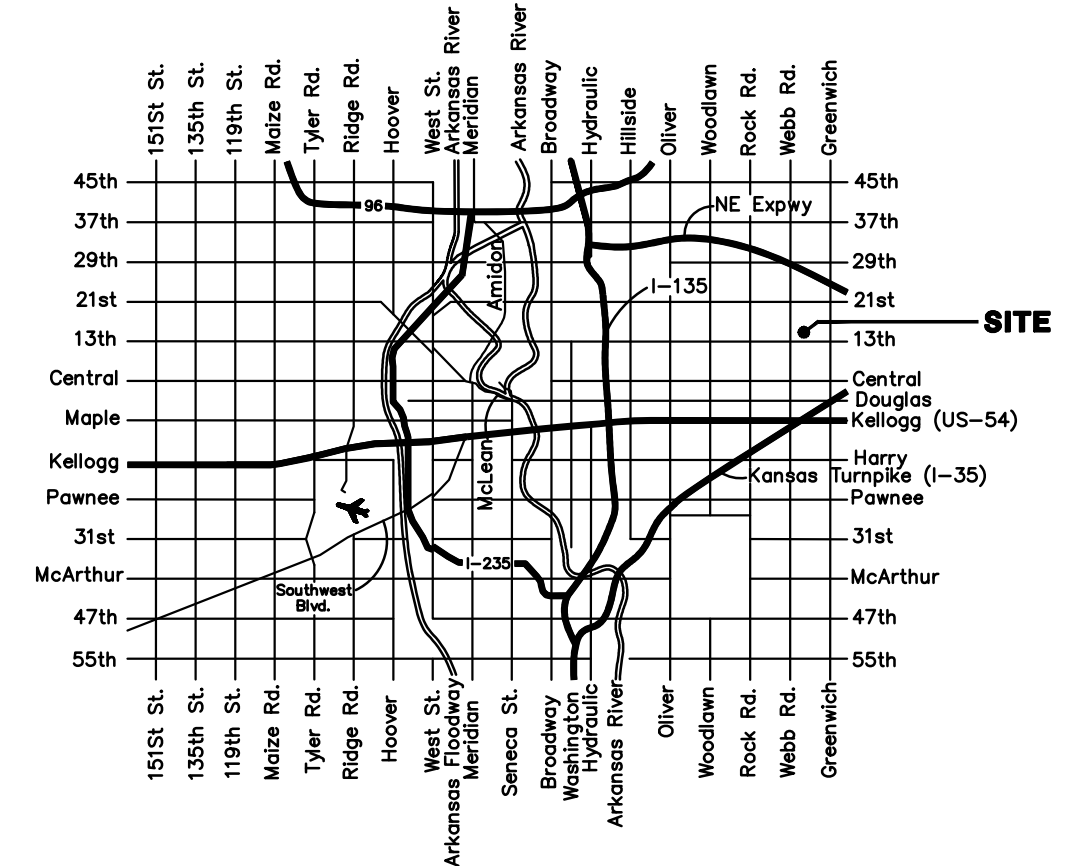
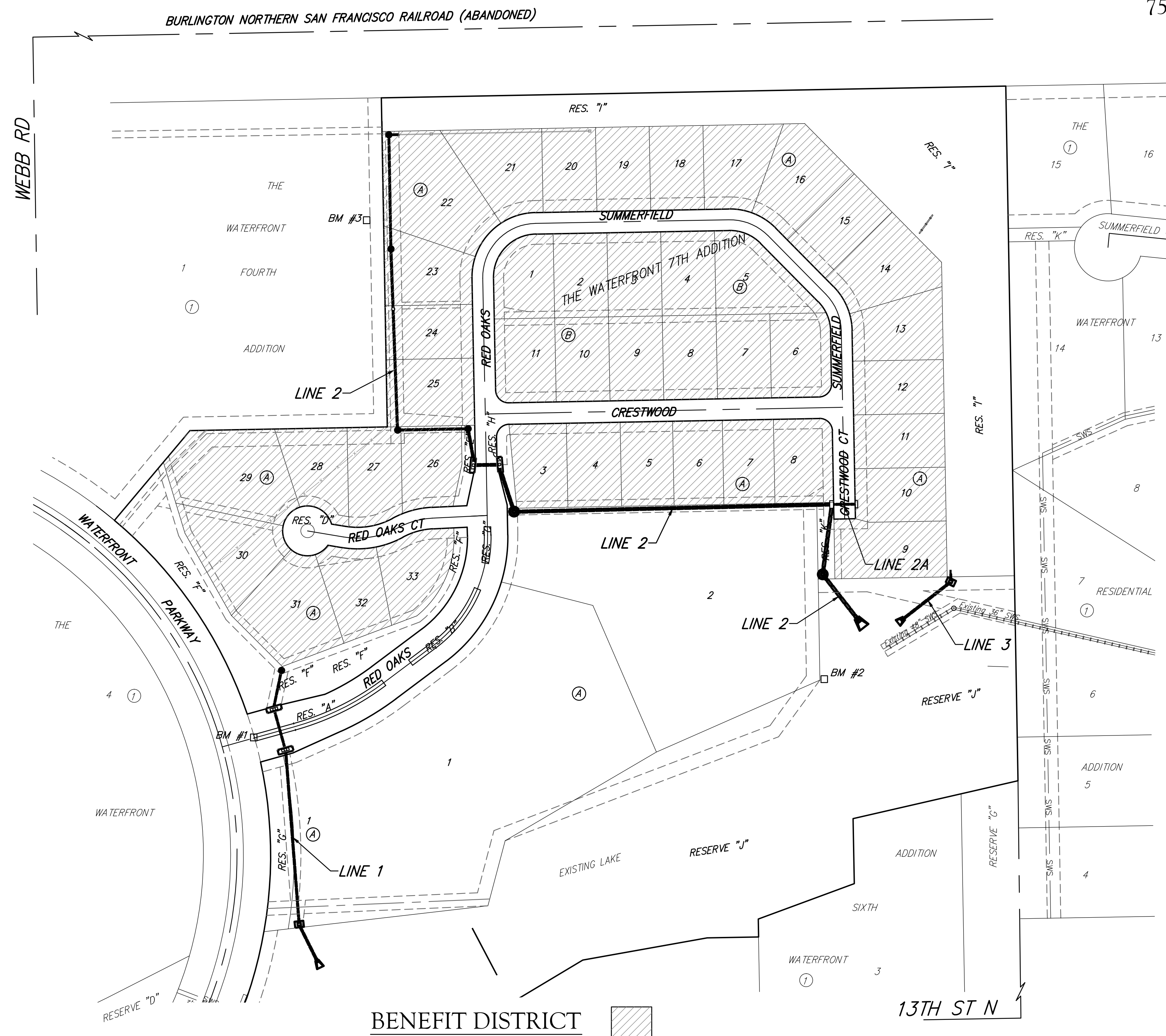


STORMWATER SEWER #688 to serve **THE WATERFRONT 7TH ADDITION** CITY OF WICHITA, KANSAS

Gary Janzen, P.E. City Engineer
Project Number
468 - 85004
O.C.A. Number
751530



VICINITY MAP



GENERAL NOTES:

1. Contractor will be required to provide notice to utility companies a minimum of forty-eight (48) hours prior to any excavation, as follows:

Kansas One-Call	687-2470
-----------------	----------

The Contractor must notify the following in case of an emergency:

Cox Communications	262-4270
Kansas Gas Service	1-888-482-4950
Westar Energy	383-8650
Aquila Energy	1-800-303-0357
AT&T	268-2245
City of Wichita Water Dept.	268-4563
City of Wichita Sewer Maint.	268-4024
City of Wichita Storm Sewer Maint.	268-4090
City of Wichita Traffic Maint.	268-4034
Conoco Phillips Pipeline Co.	1-877-267-2290
Southern Star Pipeline Co.	529-6600
Kinder-Morgan Pipeline Co.	1-888-844-5658
2. Utility service lines, poles, valve boxes, meters, and etcetera are to be adjusted as necessary by others prior to construction unless the plans specifically call for their adjustment by the Contractor or unless the plans specifically identify a utility to be adjusted by its owner during construction. Existing utilities and their location, as shown on the plans, represent the best information obtainable for design. The Contractor will be required to work around existing utilities within the right-of-way which do not conflict with proposed construction.
3. Rubble from the removal of miscellaneous structures and excess excavation which is to be wasted shall be disposed of on sites to be provided by the Contractor. These sites shall be approved by the Engineer as to suitability, appearance and site location. Locations, in the opinion of the Engineer, that will leave an unsightly appearance will not be approved. All disposal sites must be approved by the Kansas Department of Health and Environment. Material either stockpiled or disposed of in a flood plain would require a Kansas State Board of Agriculture permit. Any material dumped in waters of the United States or wetlands is subject to U.S. Corps. of Engineers permitting regulations. Any material buried or stockpiled beyond approved construction limits would require additional archaeological investigations unless buried in a previously approved borrow location.
4. Trees and shrubs in the work area which are in direct conflict with proposed new construction shall be removed by the Contractor ONLY with the Developer or Baughman Company approval. Trees and shrubs which are not in direct conflict with proposed new construction shall be saved and protected from damage. An on-site pre-construction meeting will occur prior to any construction to discuss tree removal and tree protection.
5. The Contractor shall give all property owners and/or tenants of developed property abutting the construction of this project a minimum of ten (10) days notice prior to start of construction.
6. The Contractor shall be responsible for preserving property irons. The Contractor will be required to re-establish any property irons which are damaged or destroyed by his construction operations. Such irons shall be re-established by a licensed land surveyor in accordance with state laws.
7. All existing and proposed erosion control measures including silt fencing, erosion control mat, straw bales, inlet barriers, and const. entrance shall be maintained throughout construction by the contractor and until project is accepted by the City of Wichita. The on-site engineer shall complete weekly reports on the status of erosion control measures. The contractor shall be required to comply with maintenance and/or replacement of erosion control measures as determined by the on-site engineer until project is accepted by City of Wichita. Maintenance and/or replacement of erosion control measures to be paid by L.S. bid item "Maintain Existing BMP's."
8. All areas disturbed during construction within Reserve "G" and Reserve "J" shall be re-sodded to match existing sod type. In areas with no existing turf grass, contractor to seed, mulch, and fertilize as follows (Permanent Seeding):

Seed: Kansas Premium Fescue Blend:	8 lbs./1000 sq. ft.
Mulch: Prairie Hay:	2 tons/acre
Fertilizer:	12-24-12: 850 lbs./acre
9. All other areas disturbed during construction shall be seeded as follows (Temporary Seeding):

Seed: Rye grass (PLS)--	5 lbs./1000 Sq. Ft.
-------------------------	---------------------
10. All costs associated with seeding, mulching, and fertilizing shall be included in bid item "Seeding". All seeding operations shall conform to the City of Wichita Standard Specifications.
11. The Developer for this project is Charlie Stevens and may be reached at (316) 636-2100.

BENCHMARKS

- BM #1:
"□" Chiseled on Top of Curb.
West End of South Median Curb
within Castlewood
Elevation = 1380.50 (NAVD 88)
- BM #2
"X" Chiseled on Back of Walk.
Near the Southeast corner of
Lot 2, Block A, The Waterfront
7th Addition
Elevation = 1381.88 (NAVD 88)
- "BM #3
"□" Chiseled on Back of Walk.
Northeast corner of parking lot
within Lot 1, Block 1, The
Waterfront 4th Addition
Elevation = 1389.50 (NAVD 88)

SHEET INDEX

Title Sheet	1
Line 1	2
Line 2 & Line 2A	3
Line 2	4-6
Line 3	7
Erosion Control Plan	8
Coordinate Sheet	9
Std. Type 1A Curb Inlet Detail	10
Drop Inlet Detail	11
Backyard Inlet Detail	12
Manhole Detail	13
Ring & Cover Detail	14
Miscellaneous Details	15
Erosion Control BMP Details	16-19
Copy of Plat	20-21



Baughman Company, P.A. 315 Ellis St. Wichita, KS 67211 P 316-262-7271 F 316-262-0149
ENGINEERING | SURVEYING | PLANNING | LANDSCAPE ARCHITECTURE