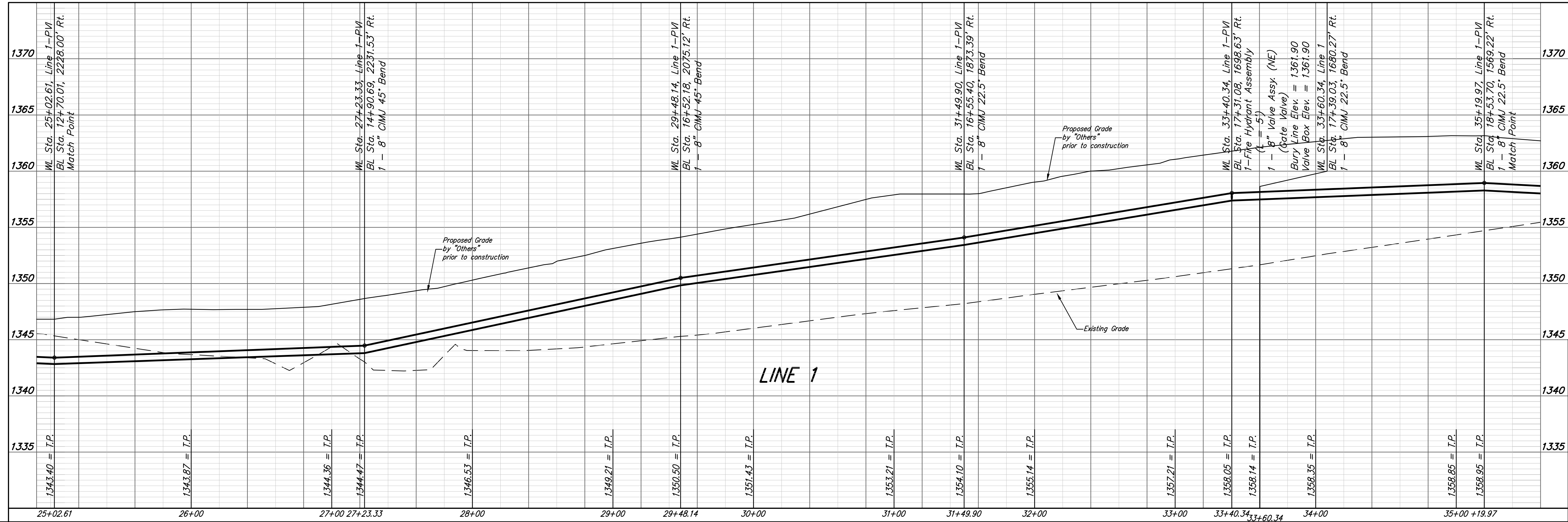
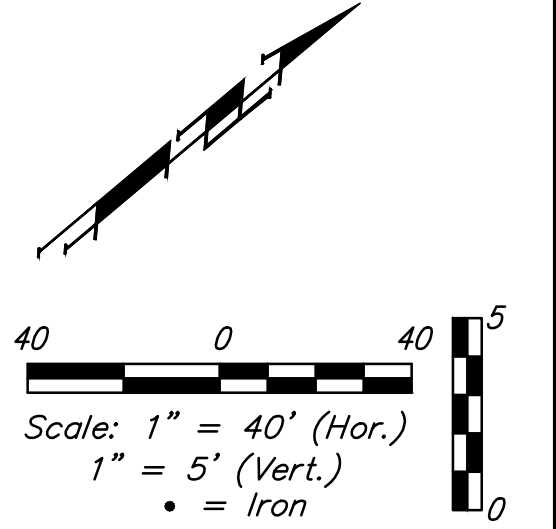
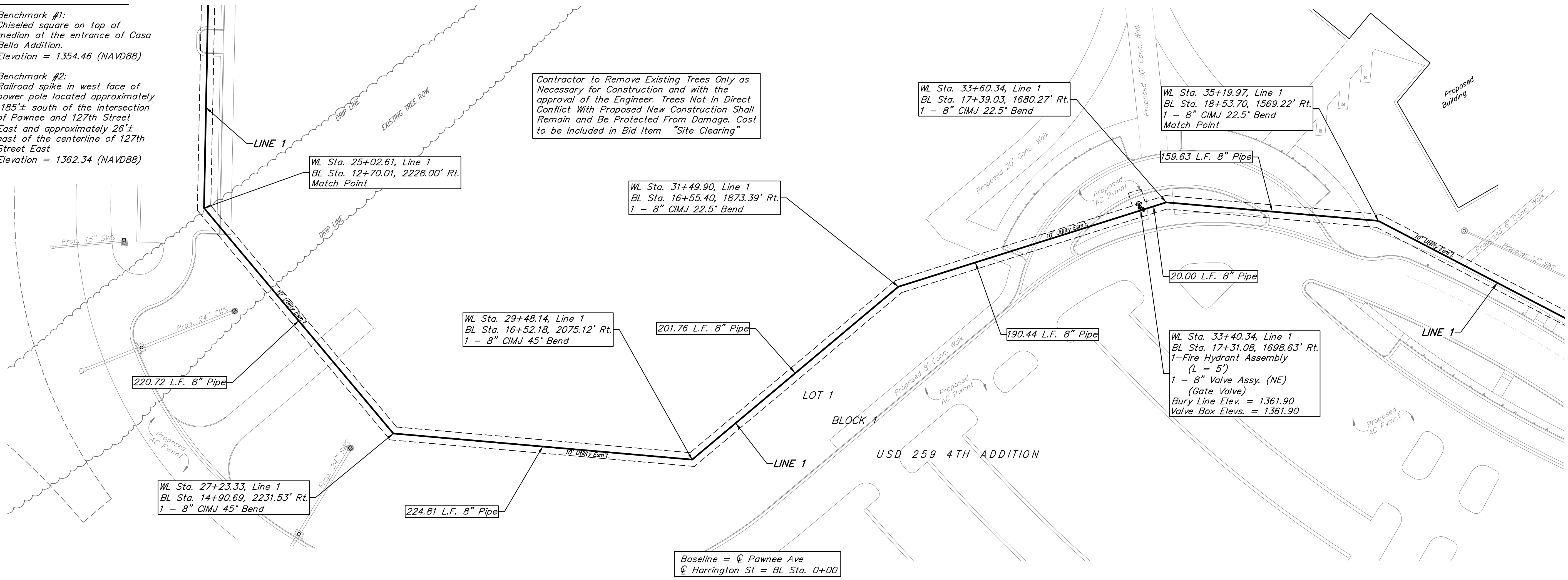


BENCHMARKS

Benchmark #1:
Chiseled square on top of median at the entrance of Casa Bella Addition.
Elevation = 1354.46 (NAVD88)

Benchmark #2:
Railroad spike in west face of power pole located approximately 1185'± south of the intersection of Pawnee and 127th Street East and approximately 26'± east of the centerline of 127th Street East
Elevation = 1362.34 (NAVD88)



Baughman USD 259 4TH ADDITION
LINE 1
Water Distribution System

Baughman Company, P.A. 315 Ellis St. Wichita, KS 67211 P 316-262-7271 F 316-262-0149
ENGINEERING | SURVEYING | PLANNING | LANDSCAPE ARCHITECTURE

PROJECT NUMBER: 448-90496
DESIGN: SPB
DRAWN: JAK
APPROVED: [Signature]
DATE: 11/14
SCALE: Noted
SHEET: 7 OF 17

REVISIONS:

E:\Projects\USD 259 SE High School Site (448-E086)\Engineering\PETITION\WTR\SE WTR PLANS.dwg