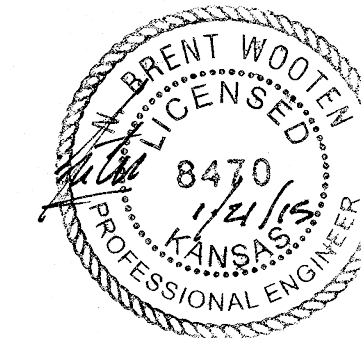
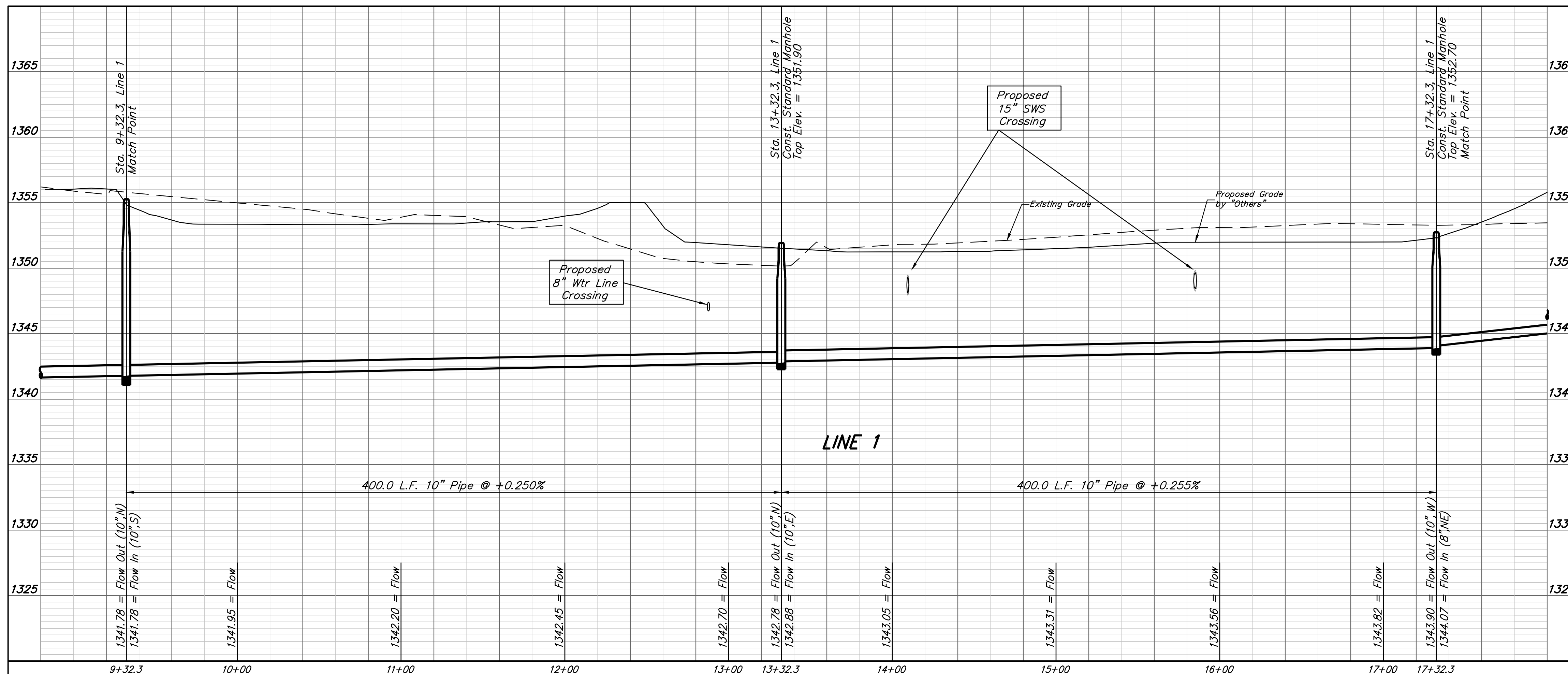
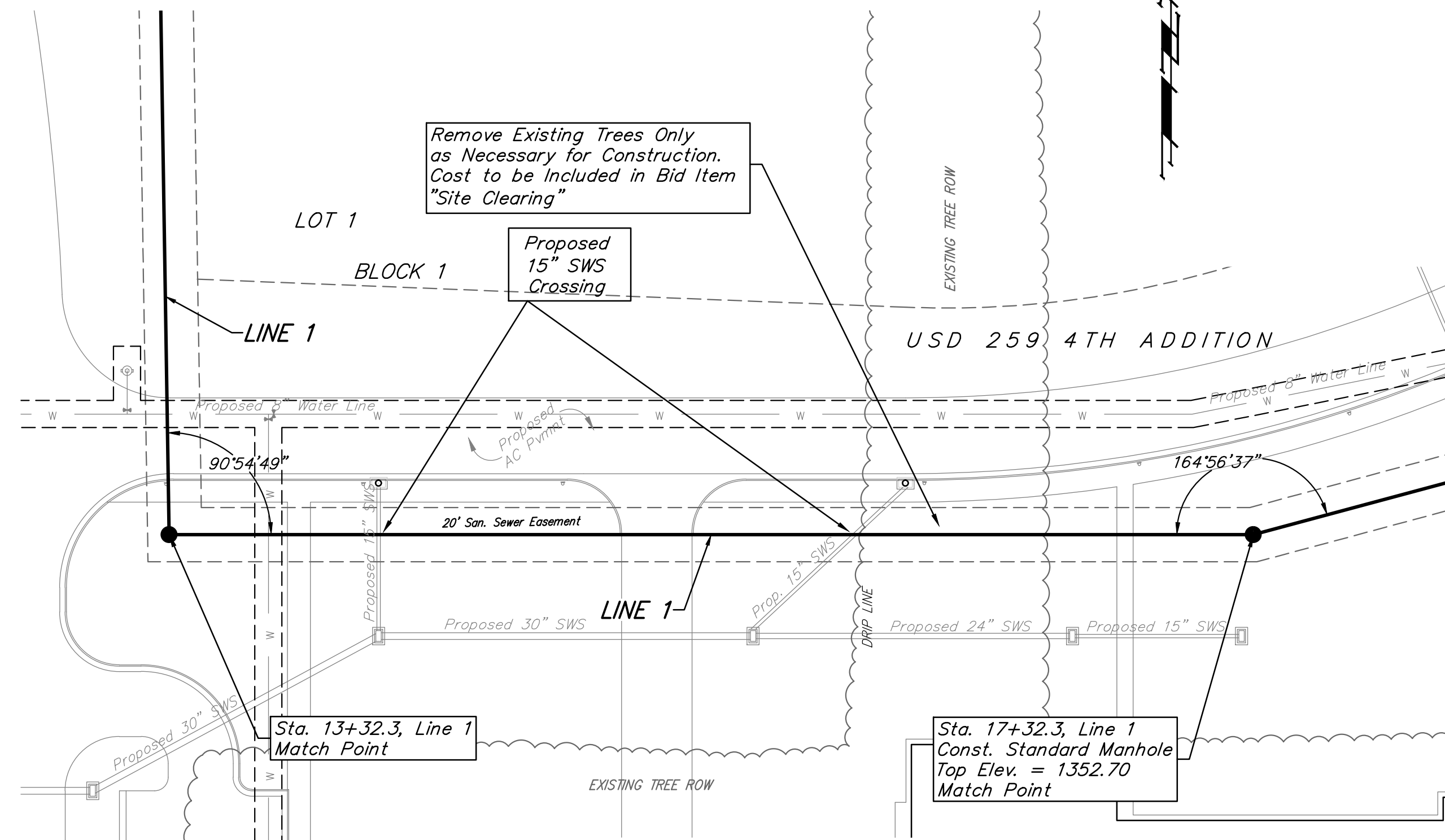
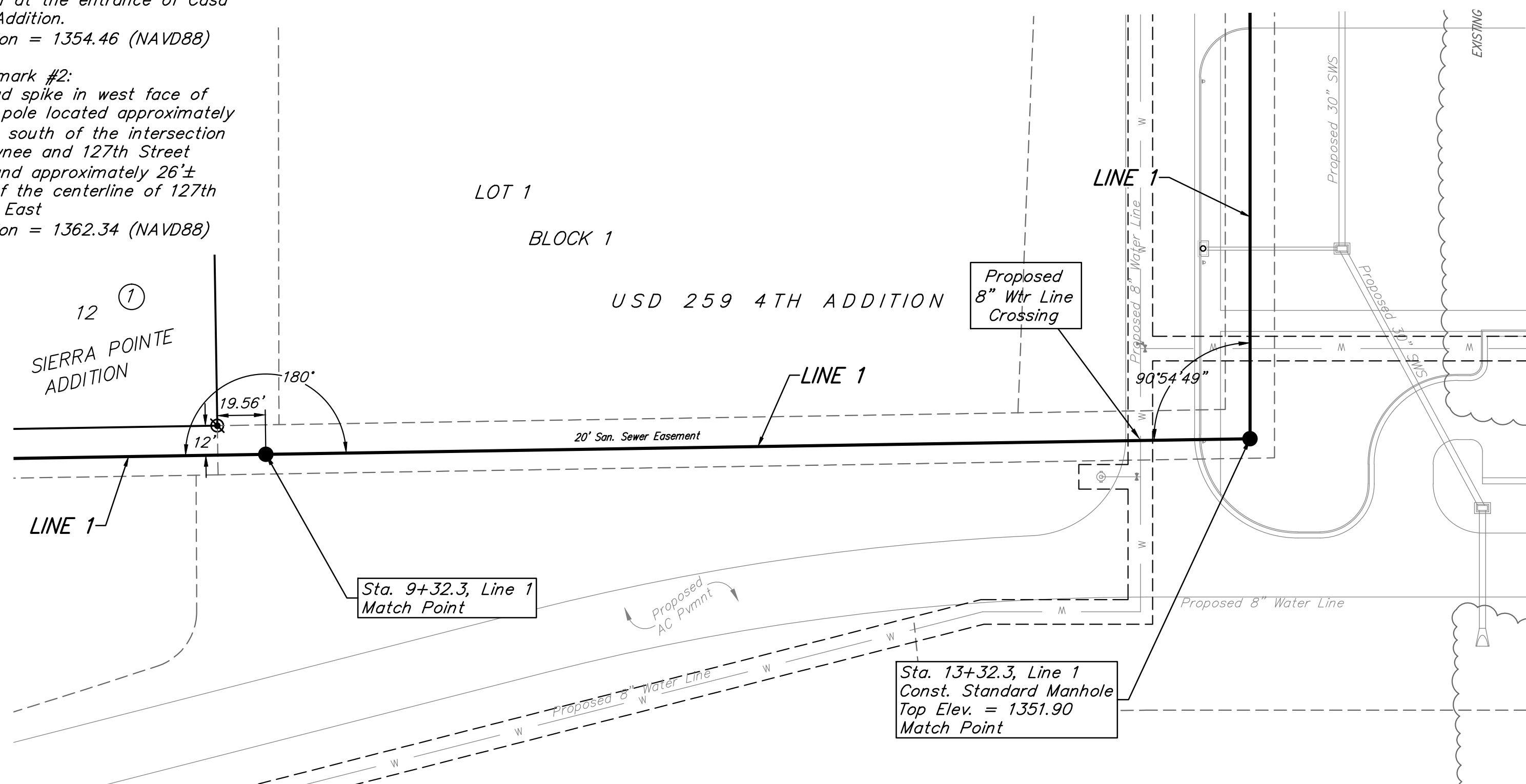
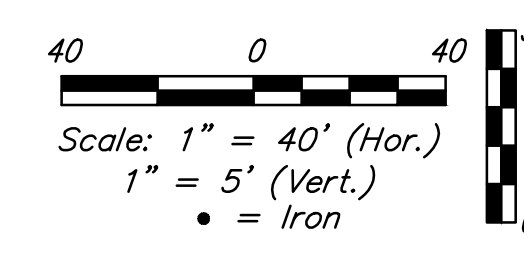


# BENCHMARKS

**Benchmark #1:**  
Chiseled square on top of median at the entrance of Casa Bella Addition.  
Elevation = 1354.46 (NAVD88)

**Benchmark #2:**  
Railroad spike in west face of power pole located approximately 1185'± south of the intersection of Pawnee and 127th Street East and approximately 26'± east of the centerline of 127th Street East  
Elevation = 1362.34 (NAVD88)



|   |          |                             |       |
|---|----------|-----------------------------|-------|
| <b>Baughman</b>   |          | USD 259 4TH ADDITION        |       |
|   |          | <b>LINE 1</b>               |       |
|   |          | Sanitary Sewer Improvements |       |
| Baughman Company, P.A. 315 Ellis St. Wichita, KS 67211 P 316-262-7271 F 316-262-0149<br>ENGINEERING   SURVEYING   PLANNING   LANDSCAPE ARCHITECTURE |          |                             |       |
| PROJECT NUMBER  | DESIGN   | SPB                         | DRAWN |
|   | APPROVED | JAK                         | JAK   |
| REVISIONS:  |          | DATE                        | 11/14 |
|   | SCALE    | Noted                       |       |
|   | SHEET    |                             |       |
|   |          | <b>3 OF 13</b>              |       |