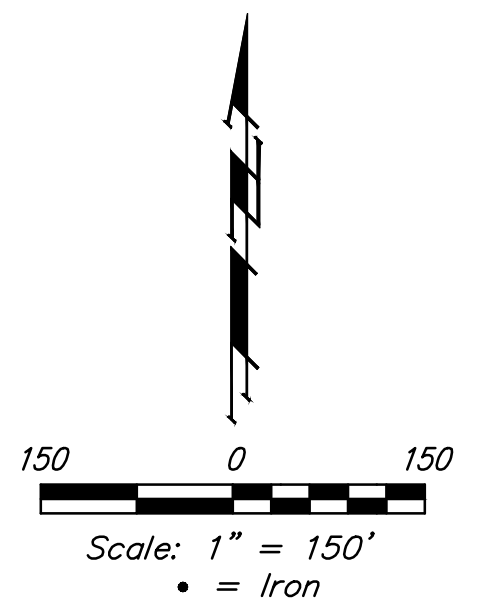
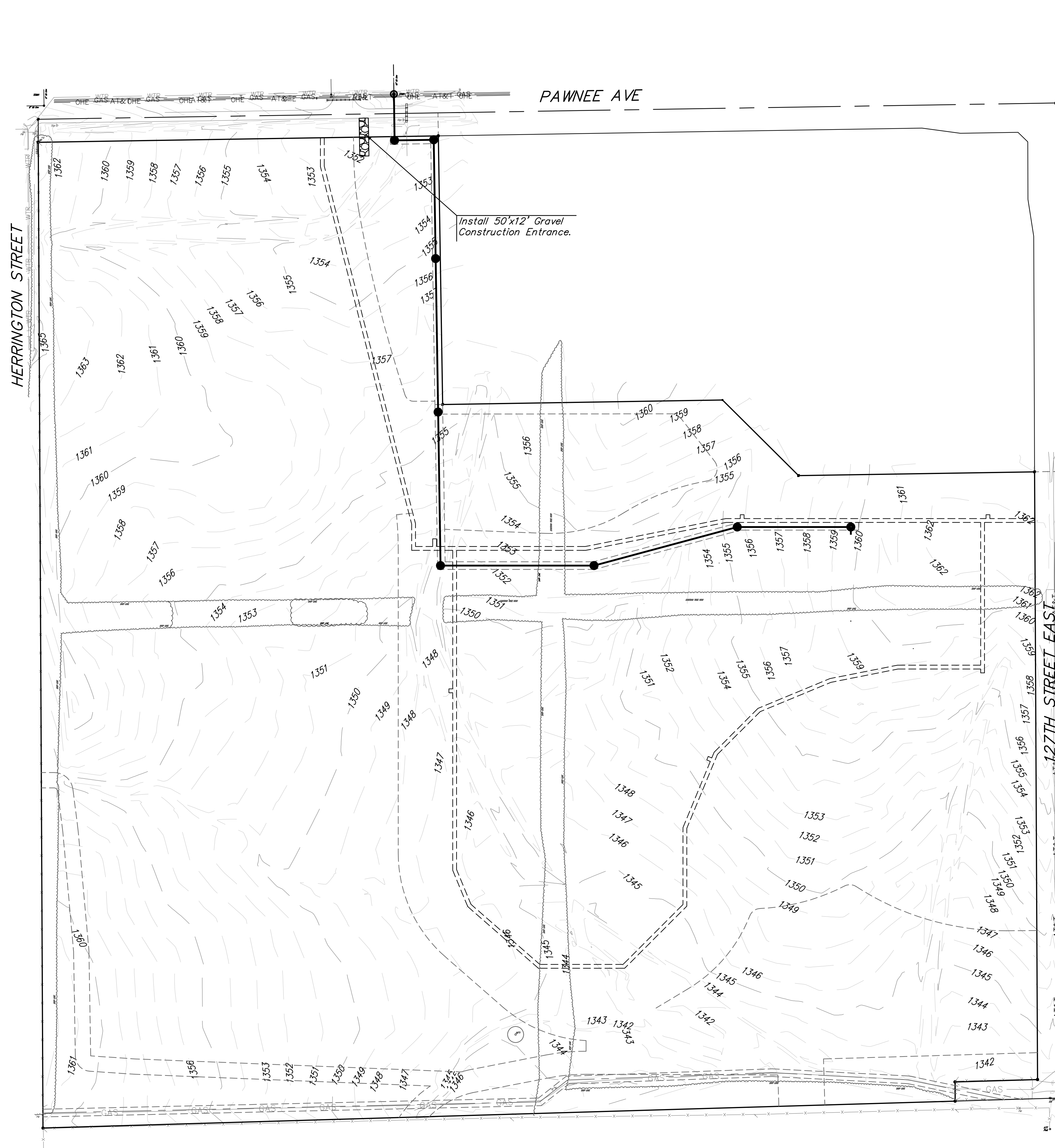


BENCHMARKS

Benchmark #1:
Chiseled square on top of median at the entrance of Casa Bella Addition.
Elevation = 1354.46 (NAVD88)

Benchmark #2:
Railroad spike in west face of power pole located approximately 1185'± south of the intersection of Pawnee and 127th Street East and approximately 26'± east of the centerline of 127th Street East
Elevation = 1362.34 (NAVD88)



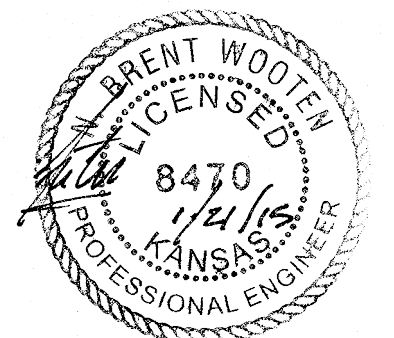
Existing Ground ——— 1364 ———
Silt Fencing — X — X —

NOTES:
Contractor shall make sure all erosion control is in place before project is accepted. This plan represents the minimum standard. Any additional erosion control measures shall be installed by the Contractor as needed.

All areas disturbed during construction shall be seeded, mulched, and fertilized as per Cover Sheet General Notes.

EROSION CONTROL MEASURE	INSTALL
BACK OF CURB PROTECTION (LF)	0
CONSTRUCTION ENTRANCE (EA)	0
CURB INLET BARRIER (EA)	0
DITCH CHECK (EA)	0
DROP INLET PROTECTION (EA)	0
EROSION CONTROL (LS)	0
EROSION CONTROL BERM (LF)	0
SILT FENCE (LF)	0
EROSION CONTROL MAT (SY)	0
MAINTAIN EROSION CONTROL BMP's (LS)	1

* ALL EXISTING BMPs INCLUDING CONSTRUCTION ENTRANCE, SEDIMENT BARRIERS, SILT FENCE, CUT-OFF TRENCH, AND EROSION CONTROL MAT SHALL BE MAINTAINED AND REPAIRED IF NECESSARY.



	USD 259 4TH ADDITION	
	EROSION CONTROL	
Sanitary Sewer Improvements		
<small>Baughman Company, P.A. 315 Ellis St. Wichita, KS 67211 P 316.262.7271 F 316.262.0149 ENGINEERING SURVEYING PLANNING LANDSCAPE ARCHITECTURE</small>		
PROJECT NUMBER	DESIGN	DRAWN
	SPB	JAK
REVISIONS:	APPROVED	DATE
		11/14
	SCALE	
	Noted	
	SHEET	
5 OF 13		