

UTILITIES

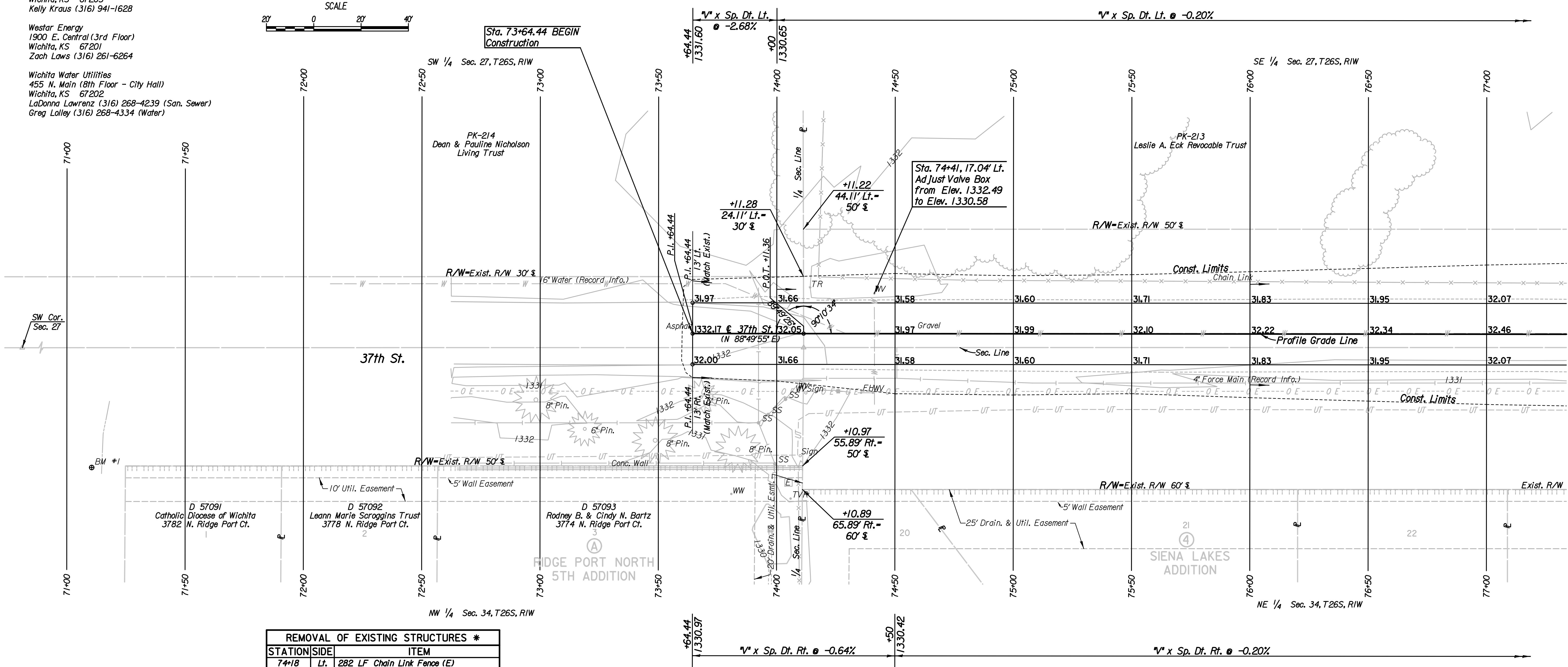
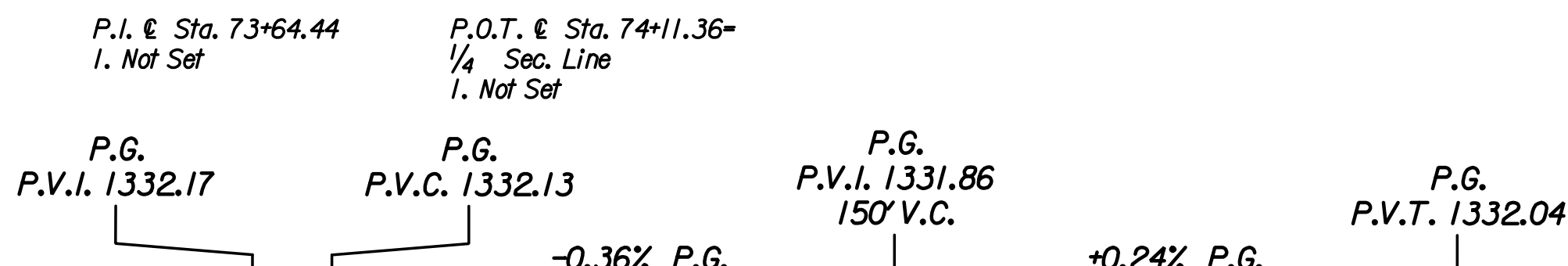
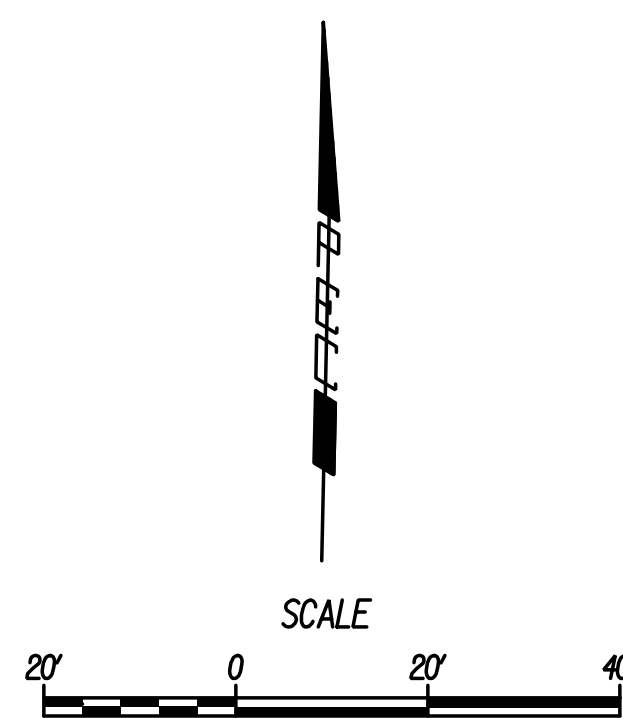
AT&T
Wichita Central Unit
154 N. Broadway, Rm. 210
Wichita, KS 67202
Jason Edwards (316) 268-2008

Cox Communications
901 George Washington Blvd.
Wichita, KS 67211
James Walburn (316) 260-7491

Black Hills Energy
2330 N. Hoover Rd.
Wichita, KS 67205
Kelly Kraus (316) 941-1628

Westar Energy
1900 E. Central (3rd Floor)
Wichita, KS 67201
Zach Laws (316) 261-6264

Wichita Water Utilities
455 N. Main (8th Floor - City Hall)
Wichita, KS 67202
LaDonna Lawrenz (316) 268-4239 (San. Sewer)
Greg Lolley (316) 268-4334 (Water)



REMOVAL OF EXISTING STRUCTURES *		
STATION	SIDE	ITEM
74+18	Lt.	282 LF Chain Link Fence (E)

* For Information Only

- Utilities**
- Power: Westar Energy
 - Sanitary Sewer: Wichita Water Utilities
 - Telephone: AT&T, Wichita Central Unit
 - Television: Cox Communications
 - Water: Wichita Water Utilities

Plotted By: drp Date: 1/15/2015 9:10:04 AM
 FILE: I:\2008\08807\001\Plan\08807-001\Plan Sta 7137th St.dgn

- SW Corner Sec. 27, T26S, R1W
Found Mag. Nail
- Chiseled ** on the top of curb 79.10' NW
 - Chiseled ** on the top of curb 68.08' SW
 - Chiseled ** on the concrete base of a traffic manhole 88.31' SE

BM #1 Chiseled ** at the end of the top of curb at the SE corner of Ridge Port and 37th St.
57' Rt. Sta. 71+11 Elev. = 1333.05 (NAVD88)

- S 1/4 Corner Sec. 27, T26S, R1W
5.89' Rt. Sta. 74+11.37
Found 1/2" Rebar
- Nail and washer in power pole 23.47' SE
 - Saw cut ** on steel fence post 30.03' N
 - Chiseled ** on concrete manhole base (North side of manhole) 35.91' SW

No.	Revision	By	Date
37TH STREET PLAN STA. 71+00 TO STA. 77+00 GARY JANZEN, P.E.-CITY ENGINEER CITY OF WICHITA PROJECT NO. 472-84780			
PROFESSIONAL ENGINEERING CONSULTANTS, P.A. 303 SOUTH TOPEKA WICHITA, KS 67202 316-262-2691 www.pec1.com			
Designed by	JPS	Job No.	08807-001
Drawn by	SVB	Date	Jan., 2015
			Sh. 9 of 227