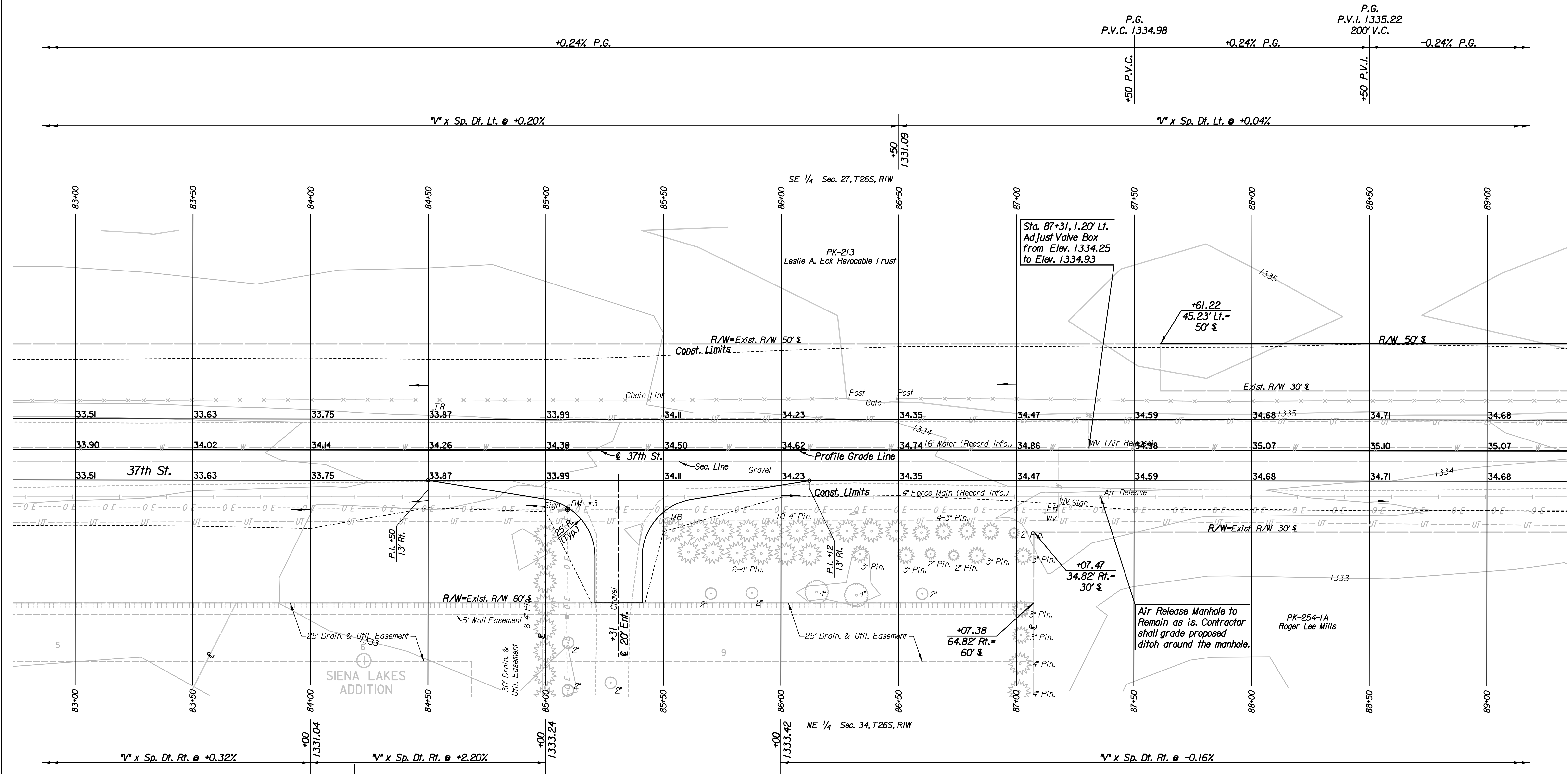
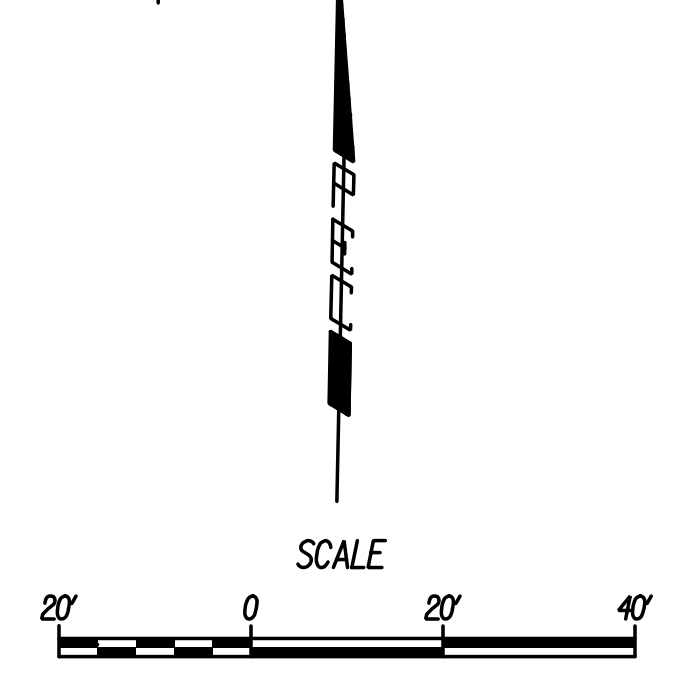


Plotted By: drp Date: 1/15/2015 9:13:31 AM  
 FILE: I:\2008\08807\001\Plan\08807-001\Plan Sta 83 37th St.dgn



REMOVAL OF EXISTING STRUCTURES *		
STATION	SIDE	ITEM
83+00	Lt.	600 LF Chain Link Fence (E)
85+06	Rt.	Sign
87+23	Rt.	Sign

\* For Information Only



BM \*3 Railroad spike in the North face of the 4th power pole West of Hoover Rd., on the West side of the drive entrance to house #6007, 149' West & 20' South of 37th St. and Hoover Rd. 25' Rt. & Sta. 85+09 Elev. = 1334.74 (NAVD88)

- Utilities**
- Power: Westar Energy
  - Sanitary Sewer: Wichita Water Utilities
  - Telephone: AT&T, Wichita Central Unit
  - Water: Wichita Water Utilities

Revision		By	Date
37TH STREET			
<b>PLAN</b>			
<b>STA. 83+00 TO STA. 89+00</b>			
GARY JANZEN, P.E.-CITY ENGINEER CITY OF WICHITA PROJECT NO. 472-84780			
<b>PEC</b> PROFESSIONAL ENGINEERING CONSULTANTS, P.A. 303 SOUTH TOPEKA WICHITA, KS 67202 316-262-2691 www.pec1.com			
Designed by	JPS	Job No.	08807-001
Drawn by	SVB	Date	Jan., 2015
			Sh. 11 of 227