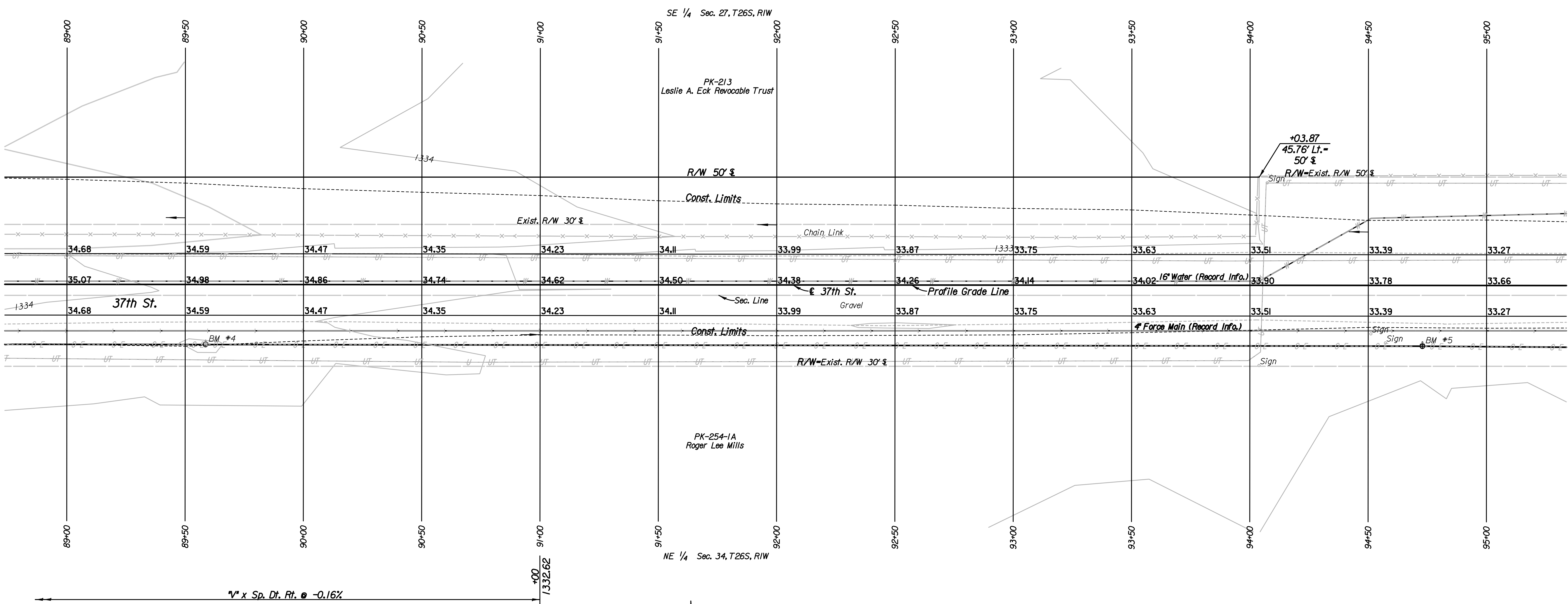
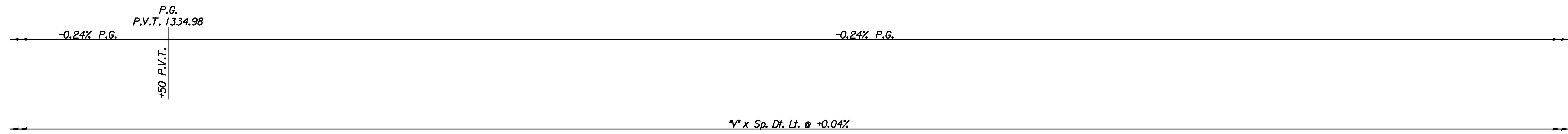


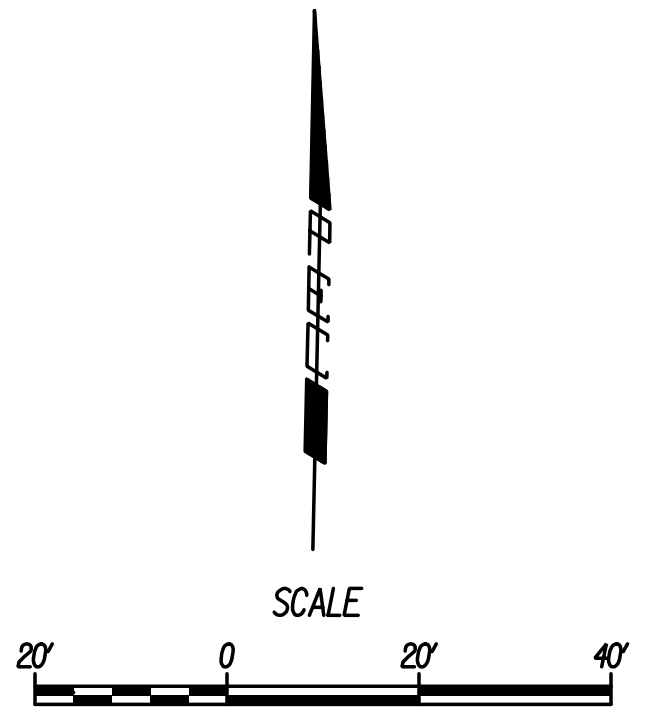
Plotted By: drp Date: 1/15/2015 9:14:25 AM
 FILE: I:\2008\08807\001\Plan\08807-001Plan Sta 89 37th St.dgn



REMOVAL OF EXISTING STRUCTURES *		
STATION	SIDE	ITEM
89+00	Lt.	503 LF Chain Link Fence (E)

* For Information Only

BM #4 60d nail in the North face of the 3rd power pole West of Hoover Rd., 1045' West & 21' South of 37th St. and Hoover Rd. 25' Rt. & Sta. 89+59 Elev.=1334.24 (NAVD88)



- Utilities**
- Power: Westar Energy
 - Sanitary Sewer: Wichita Water Utilities
 - Telephone: AT&T, Wichita Central Unit
 - Water: Wichita Water Utilities

BM #5 Railroad spike in the North face of the 2nd power pole West of Hoover Rd., 531' West & 21' South of 37th St. and Hoover Rd. 26' Rt. & Sta. 94+73 Elev.=1333.36 (NAVD88)

No.	Revision	By	Date
37TH STREET			
PLAN			
STA. 89+00 TO STA. 95+00			
GARY JANZEN, P.E.-CITY ENGINEER CITY OF WICHITA PROJECT NO. 472-84780			
PEC PROFESSIONAL ENGINEERING CONSULTANTS, P.A. 303 SOUTH TOPEKA WICHITA, KS 67202 316-262-2691 www.pec1.com			
Designed by	JPS	Job No.	08807-001
Drawn by	SVB	Date	Jan., 2015
			Sh. 12 of 227