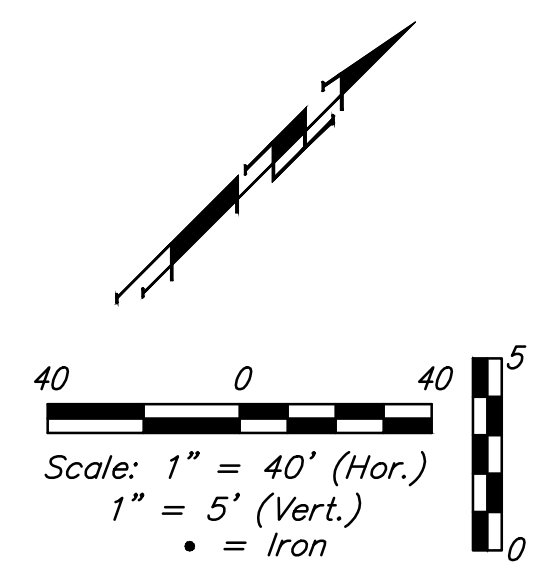
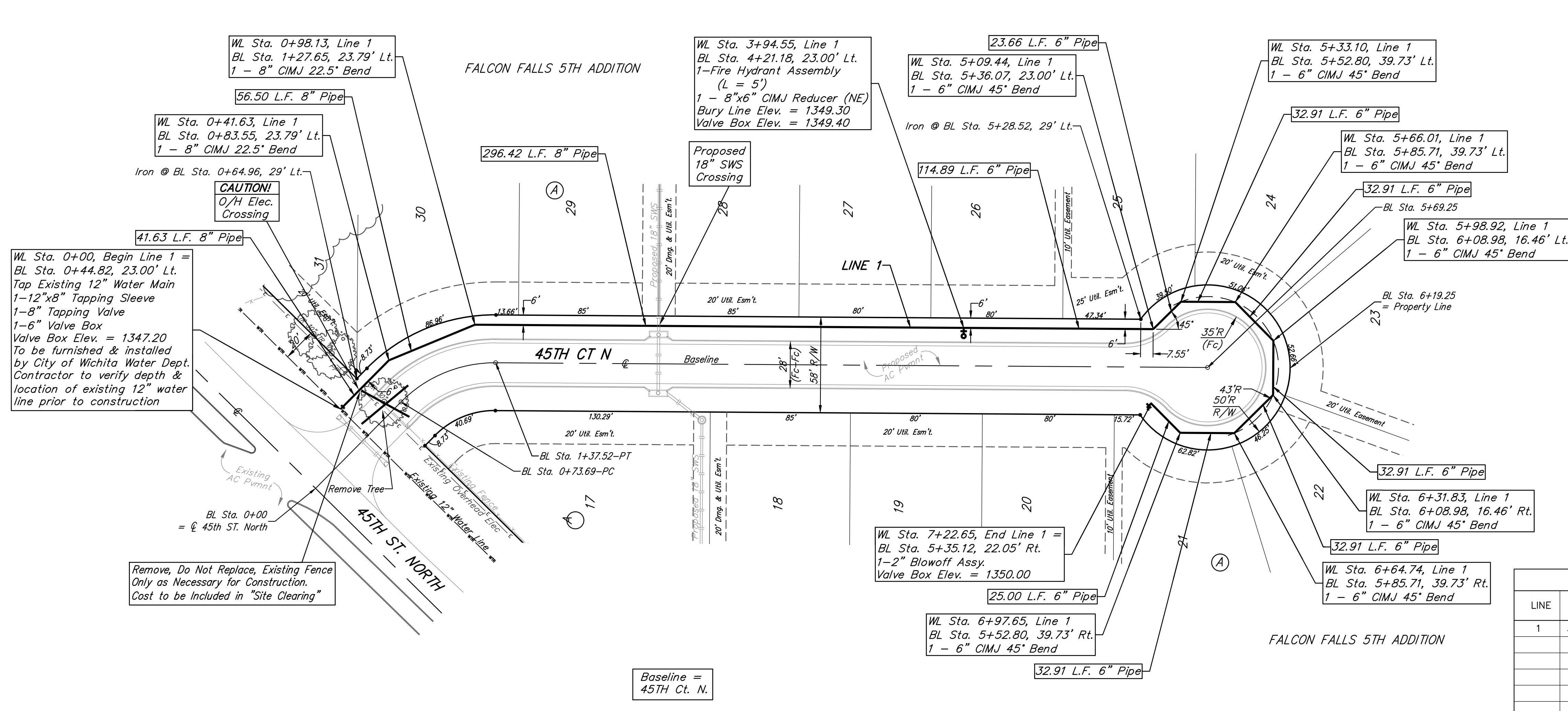
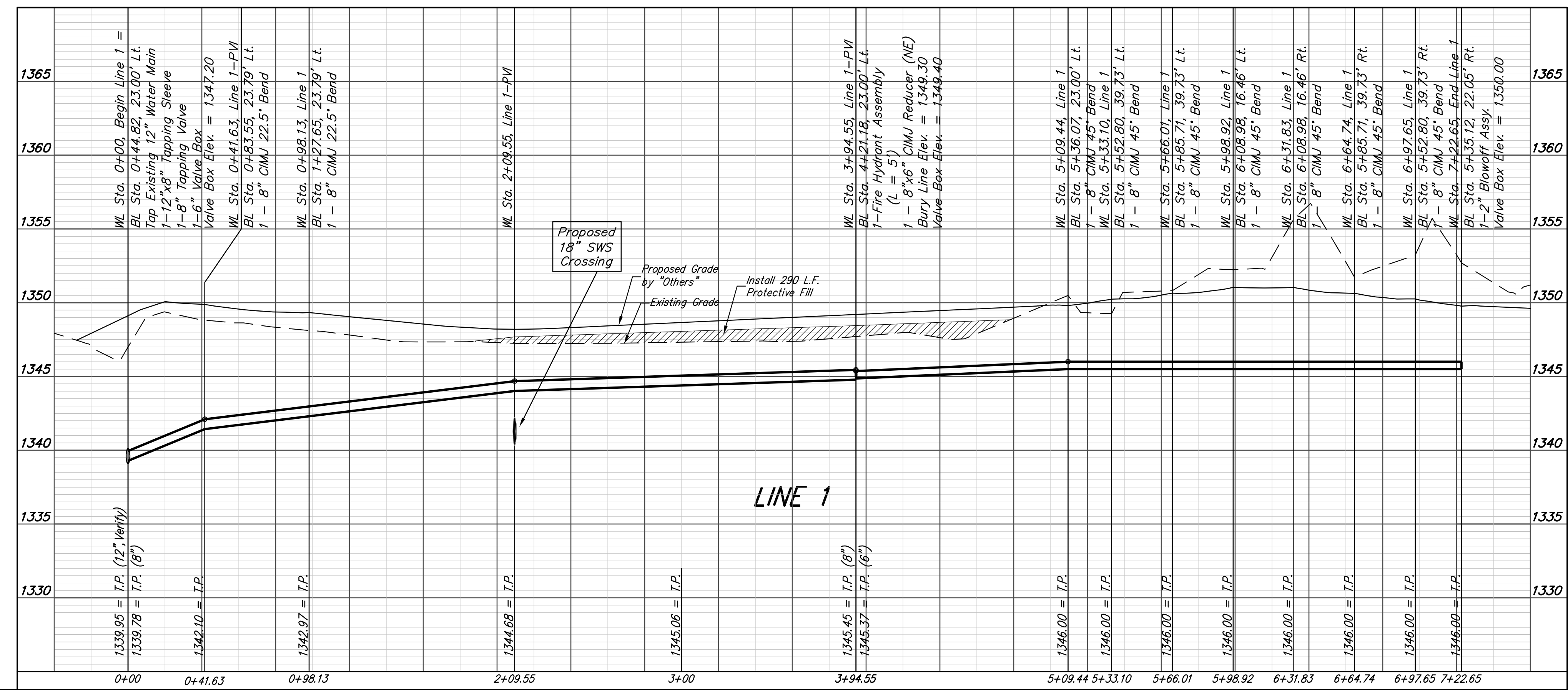


BENCHMARKS:
 Chiseled square cut on top of headwall of R.C.B.C., 31.1' southeast of the most southerly corner of Lot 1, Block A & 36.6' northeast of the northeast corner of Reserve "C".
 Elev. = 1349.83 NAVD88

Chiseled square cut on top of curb at west end of median, 89.6' south-southwest of the southwest corner of Lot 17, Block A & 86.2' south-southeast of the southeast corner of Lot 31, Block A.
 Elev. = 1348.62 NAVD88



FIRE HYDRANTS REQUIRED					
LINE	STATION	BURY LINE ELEVATION	TOP OF PIPE ELEVATION	FIRE HYDRANT BURY REQUIRED*	VALVE STEM EXT. REQUIRED (ft)*
1	3+94.55	1349.30	1345.45	4.5'	



B Baughman	Falcon Falls 5th Addition - Phase I	
	LINE 1 Water Distribution System	
Baughman Company, P.A. 315 Ellis St., Wichita, KS 67211 P 316-262-2771 F 316-262-0149 ENGINEERING SURVEYING PLANNING LANDSCAPE ARCHITECTURE		
PROJECT NUMBER 448-90650	DESIGN AEG	DRAWN JAK
REVISIONS:	APPROVED	DATE 11/14
	SCALE Noted	SHEET
4 OF 12		