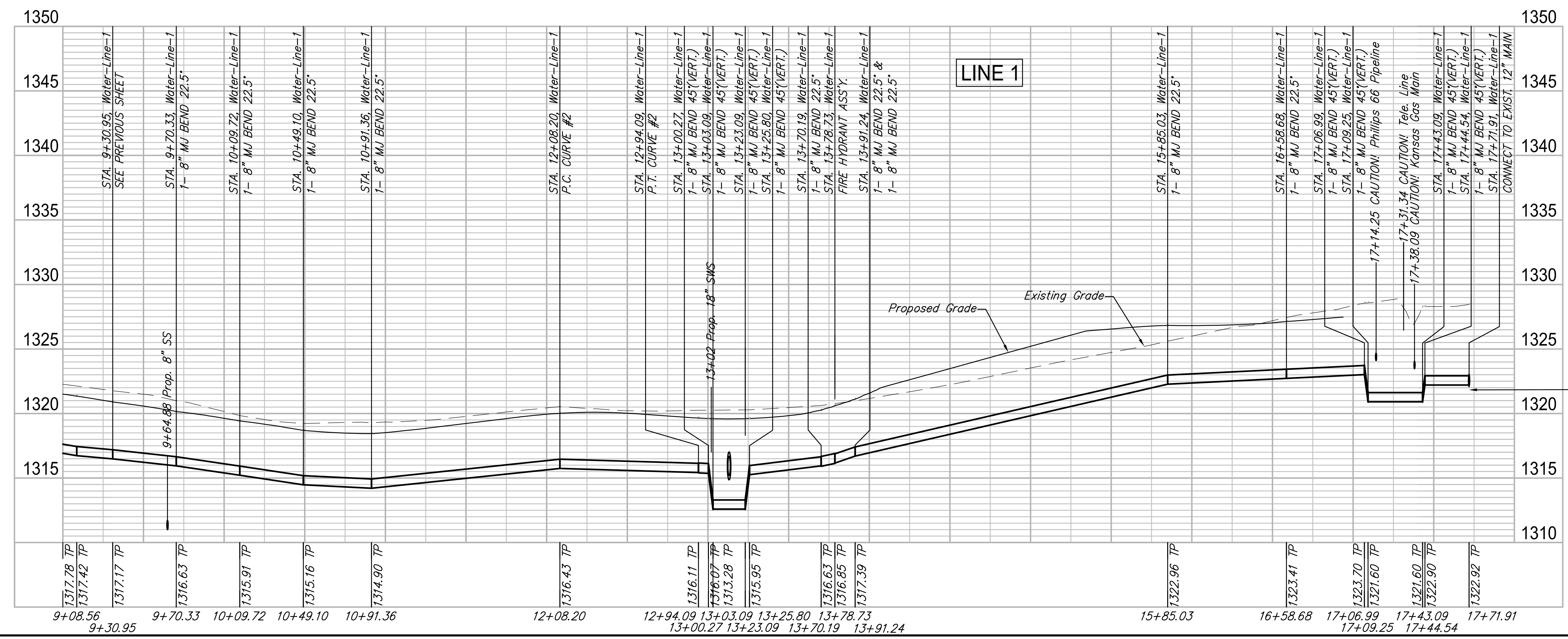
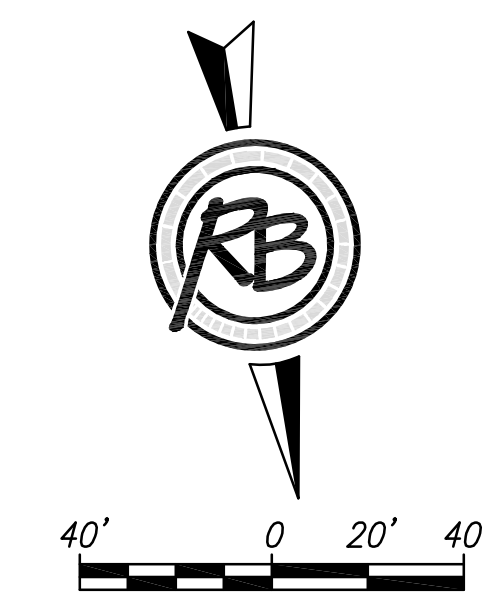


NOTE:  
Easements on both sides of roadway are "15" Street, Drainage, Sidewalk, & Utility Easements.



NOTE:  
Contractor shall expose and field locate telephone and gas/pipelines prior to construction. Field adjust depth of new water main to provide minimum clearance of 1 foot(1') from phone line and minimum clearance of 2 feet(2') from Kansas Gas Main & Phillips 66 Pipeline.

NOTE:  
Field verify location and depth of existing 12" water main prior to construction.

