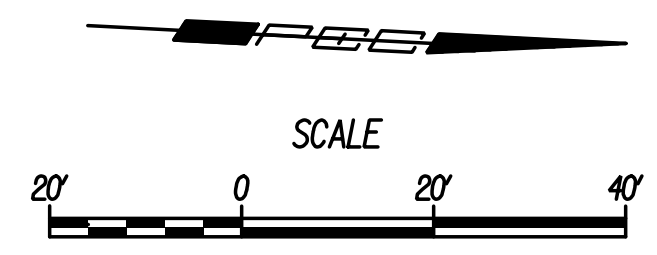


Plotted By: svb
 Date: 2/23/2015 11:58:42 AM
 FILE: U:\Wichita\Civil\2014\136\Road\Trans\Road\DN Project\Plan\14136-Hillside Plan 47.dgn

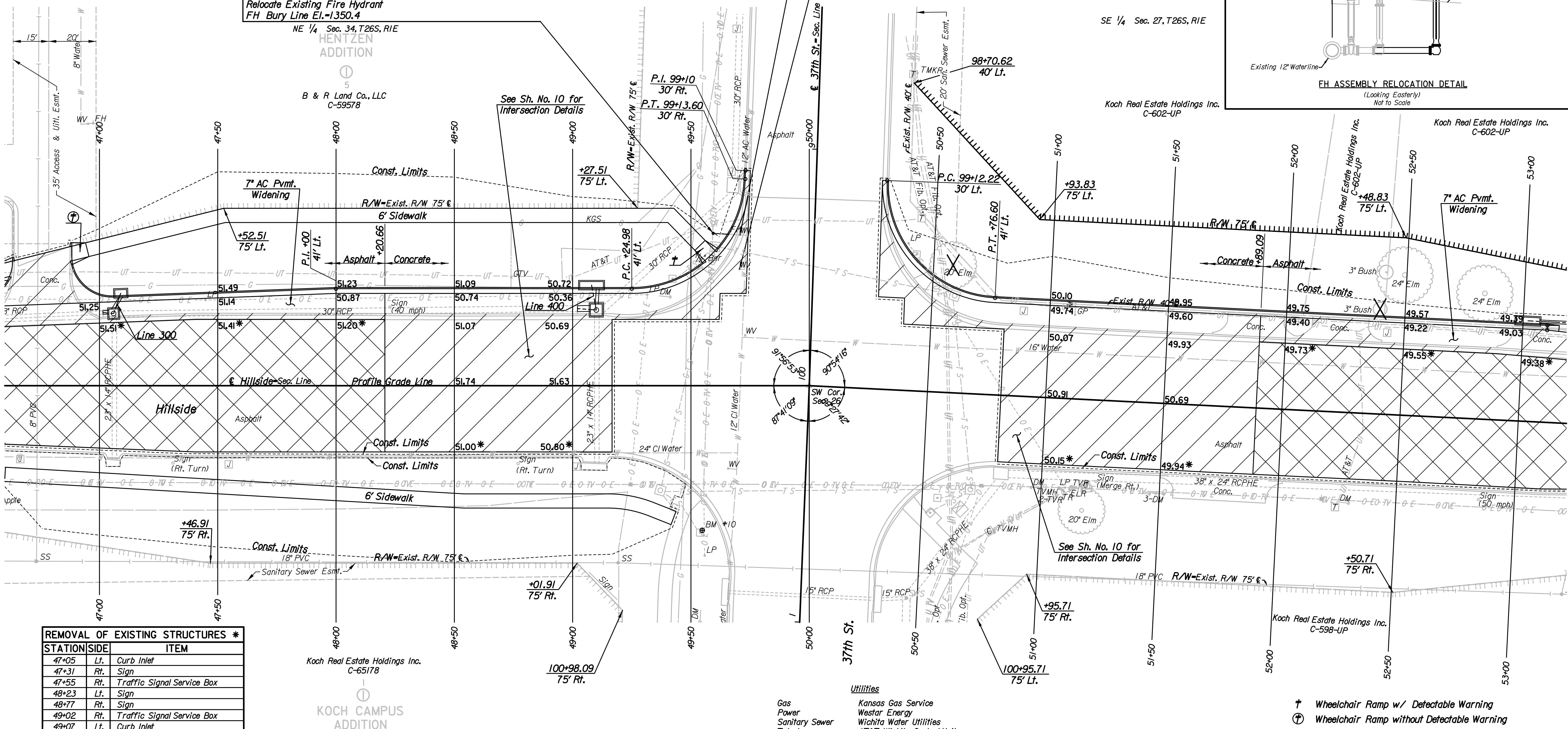
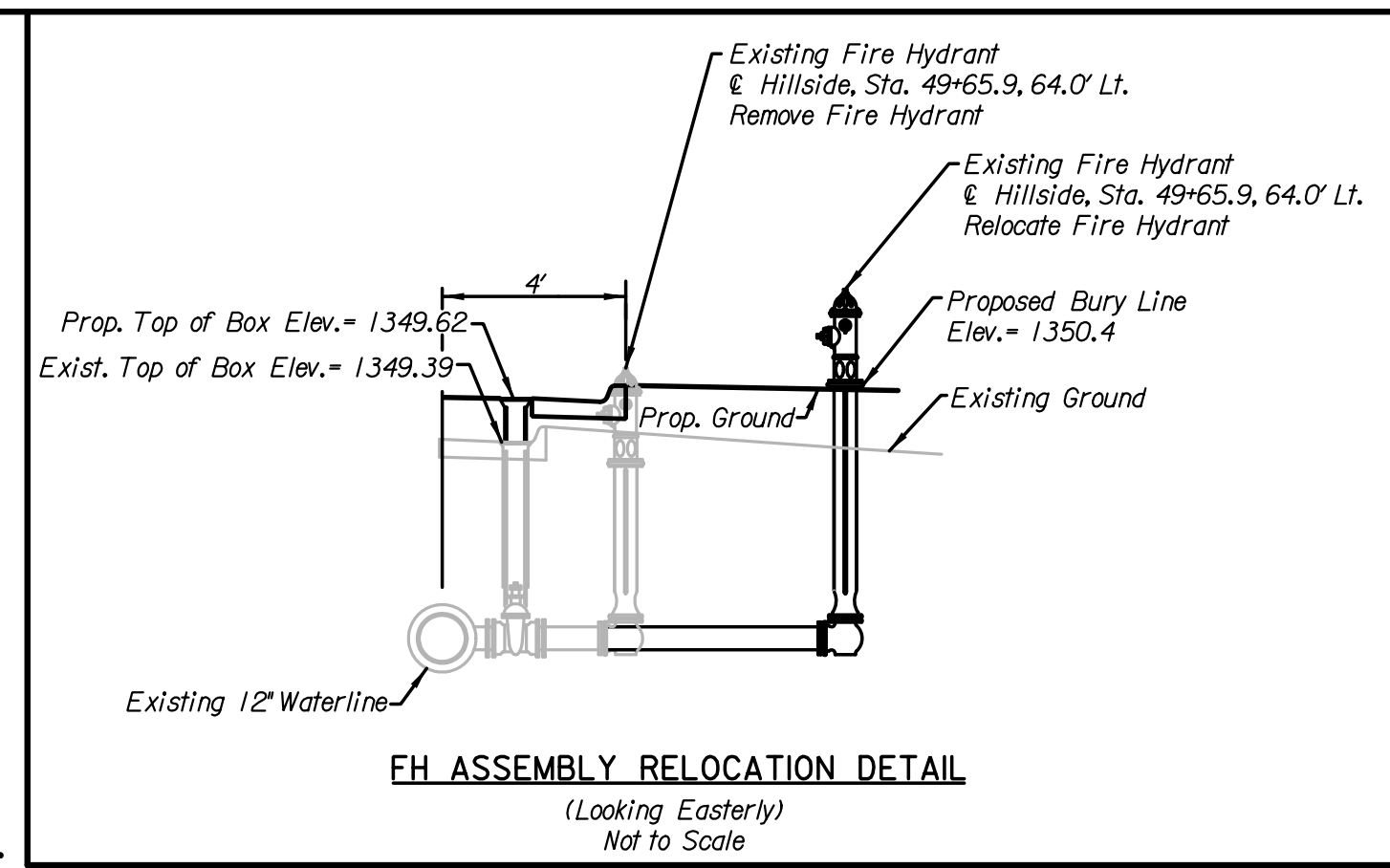


N: 1,709,815.7813 E: 1,659,349,5973
 Hillside, Sta. 49+65.9, 64.0' Lt.
 Existing Fire Hydrant
 Remove Existing Fire Hydrant and connect new 6" Pipe.
 6.50'-6" CI CL RJ Pipe (S)
 Connection to existing pipe shall be made with clean swabbed pipe.
 (Fittings, adaptors, and other incidentals as necessary)
 Hillside, Sta. 49+59.4, 64.4' Lt.
 Relocate Existing Fire Hydrant
 FH Bury Line El.=1350.4

N: 1,709,820.6513 E: 1,659,349,6313
 Hillside, Sta. 49+70.7, 63.7' Lt.
 Existing Water Valve
 Existing WV El.=1349.39
 Adjusted WV El.=1349.62

N: 1,709,821.1843 E: 1,659,364,0893
 Hillside, Sta. 49+70.5, 49.3' Lt.
 Existing Water Valve
 Existing WV El.=1349.93
 Adjusted WV El.=1349.98

P.I. & Sta. 50+00.00=
 NW Cor. Sec. 35, T26S, R1E
 Deflection Angle = 02°51'09" Rt.
 1. See References below



REMOVAL OF EXISTING STRUCTURES *		
STATION	SIDE	ITEM
47+05	Lt.	Curb Inlet
47+31	Rt.	Sign
47+55	Rt.	Traffic Signal Service Box
48+23	Lt.	Sign
48+77	Rt.	Sign
49+02	Rt.	Traffic Signal Service Box
49+07	Lt.	Curb Inlet
49+42	Lt.	Traffic Signal Pole
49+43	Rt.	Traffic Signal Pedestal
49+54	Rt.	Traffic Signal Pole
49+60	Lt.	Traffic Signal Service Box
50+43	Lt.	Traffic Signal Pole
50+54	Rt.	Traffic Signal Pedestal
50+56	Rt.	Traffic Signal Pole
50+60	Lt.	Traffic Signal Service Box
50+66	Rt.	Traffic Signal Controller
50+89	Lt.	Traffic Signal Service Box
52+43	Lt.	Traffic Signal Service Box

* For Information Only

Koch Real Estate Holdings Inc.
 C-65178
 KOCH CAMPUS
 ADDITION
 NW 1/4 Sec. 35, T26S, R1E

NW Cor. Sec. 35, T26S, R1E
 1. Found 1/2" Rebar with PEC Cap
 2. N 1,709,853.1741 E 1,659,411.7656
 3. Chiseled * on SE corner of traffic signal base
 4. Chiseled * on SW corner of traffic signal base
 5. Chiseled * on NE corner of traffic signal base
 6. City of Wichita benchmark disk

70.46' NW
 70.57' NE
 71.90' SW
 76.10' SE

S 1/4 Cor. Sec. 27, T26S, R1E
 1. Found 1/2" Iron Pipe in Thimble
 2. N 1,709,807.5198 E 1,656,844.1237
 3. SE corner of steel top rail
 4. PK nail in the SW face of power pole
 5. Chiseled * on the NW bolt of railroad signal base
 6. West rail of railroad
 7. Line of poles to the North
 8. In E of asphalt road east and west

BM*10 City Disk at NW corner of traffic signal base,
 SE corner of Hillside and 37th St.
 61' Rt. & Sta. 49+55
 Elev.=1353.27

Utilities
 Gas: Kansas Gas Service
 Power: Westar Energy
 Sanitary Sewer: Wichita Water Utilities
 Telephone: AT&T, Wichita Central Unit
 Telephone: Level 3 Communications
 Television: Cox Communications
 Water: Wichita Water Utilities

SW 1/4 Sec. 26, T26S, R1E

⊗ PRIOR TO BEGINNING CONSTRUCTION, THE CONTRACTOR SHALL EXCAVATE THE EXISTING 6" WATERLINE AT HILLSIDE, STA. 49+65.9, 64.0' LT. TO VERIFY PIPE SIZE, TYPE, FITTINGS, AND HORIZONTAL AND VERTICAL LOCATION. THE CONTRACTOR SHALL REPORT HIS FINDINGS TO THE ENGINEER SO THAT ANY NECESSARY PLAN MODIFICATIONS CAN BE MADE. ANY ADDITIONAL LABOR OR MATERIALS NECESSARY TO COMPLETE THE CONNECTION SHALL BE CONSIDERED SUBSIDIARY TO THE PROJECT.

† Wheelchair Ramp w/ Detectable Warning
 ⊕ Wheelchair Ramp without Detectable Warning

No.	Revision	By	Date
HILLSIDE			
PLAN STA. 47+00 TO STA. 53+00			
GARY JANZEN, P.E.-CITY ENGINEER CITY OF WICHITA PROJECT NO. 472-85161			
PEC PROFESSIONAL ENGINEERING CONSULTANTS, P.A. 303 SOUTH TOPEKA WICHITA, KS 67202 316-262-2691 www.pec1.com			
Designed by	JPS	Job No.	14136
Drawn by	SVB	Date	Feb., 2015
			Sh. 5 of 62