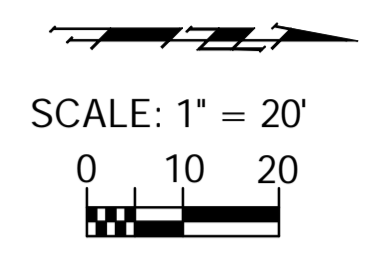
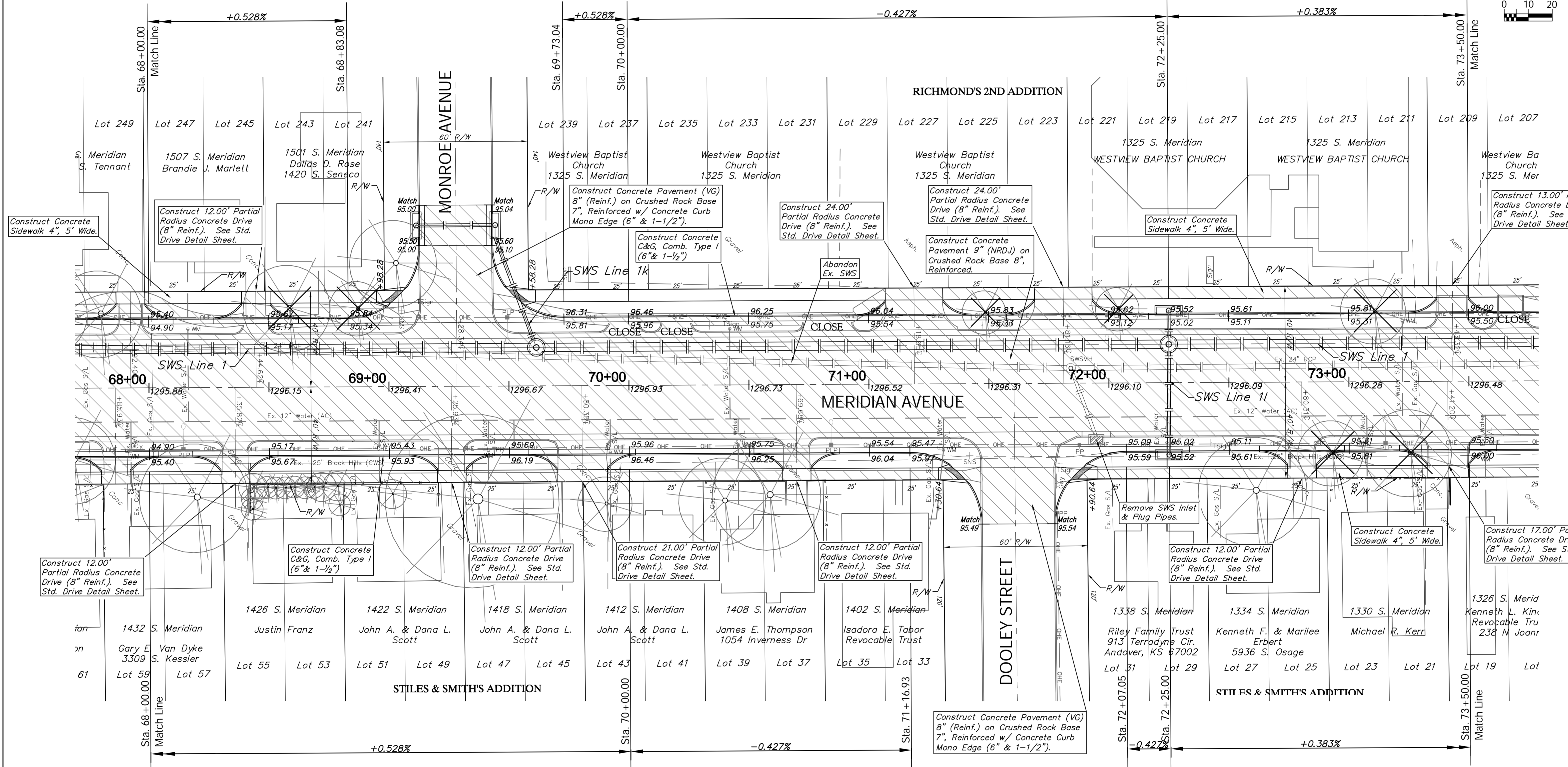


FHWA REGION NO.	STATE	PROJECT NO.	FISCAL YEAR	SHEET NO.	TOTAL SHEETS
7	KANSAS	XXN-XXXX-01	2013		



P.V.I.  
No V.C.  
Elev. = 1296.46

P.V.I.  
No V.C.  
Elev. = 1295.52



P.V.I.  
No V.C.  
Elev. = 1296.46

P.V.I.  
No V.C.  
Elev. = 1295.52

**Note:**  
Trees/Shrubs to be removed are marked thus:

Areas of Full Pavement Removal & Replacement are Indicated By:

Drawing File: E:\Projects\Meridian - Orient to McCormick\Civil 3d\Meridian Base.dwg (Pav 05)  
Project No. 1004E493 CAPITAL IMPROVEMENT PROJECT  
Design: TPV  
Drawn: STAFF  
Approved: TPV  
Scale: NOTED

**MERIDIAN AVENUE PAVING**  
Sta. 68+00.00 to Sta. 73+50.00  
MERIDIAN AVENUE - ORIENT BOULEVARD to MCCORMICK AVENUE

**Baughman Company, P.A.**  
315 Ellis St., Wichita, KS 67211 P 316.262.1271 F 316.262.0149  
ENGINEERING | SURVEYING | PLANNING | LANDSCAPE ARCHITECTURE

April 2013  
SHEET  
OF