

Sanitary Sewer Improvements

Dental Office

Lot 1, Parcel A, Ridge Port North 6th Addition

Private Project: 2213 PPS (607861)

CITY OF WICHITA, KANSAS

Gary Janzen, P.E. City Engineer

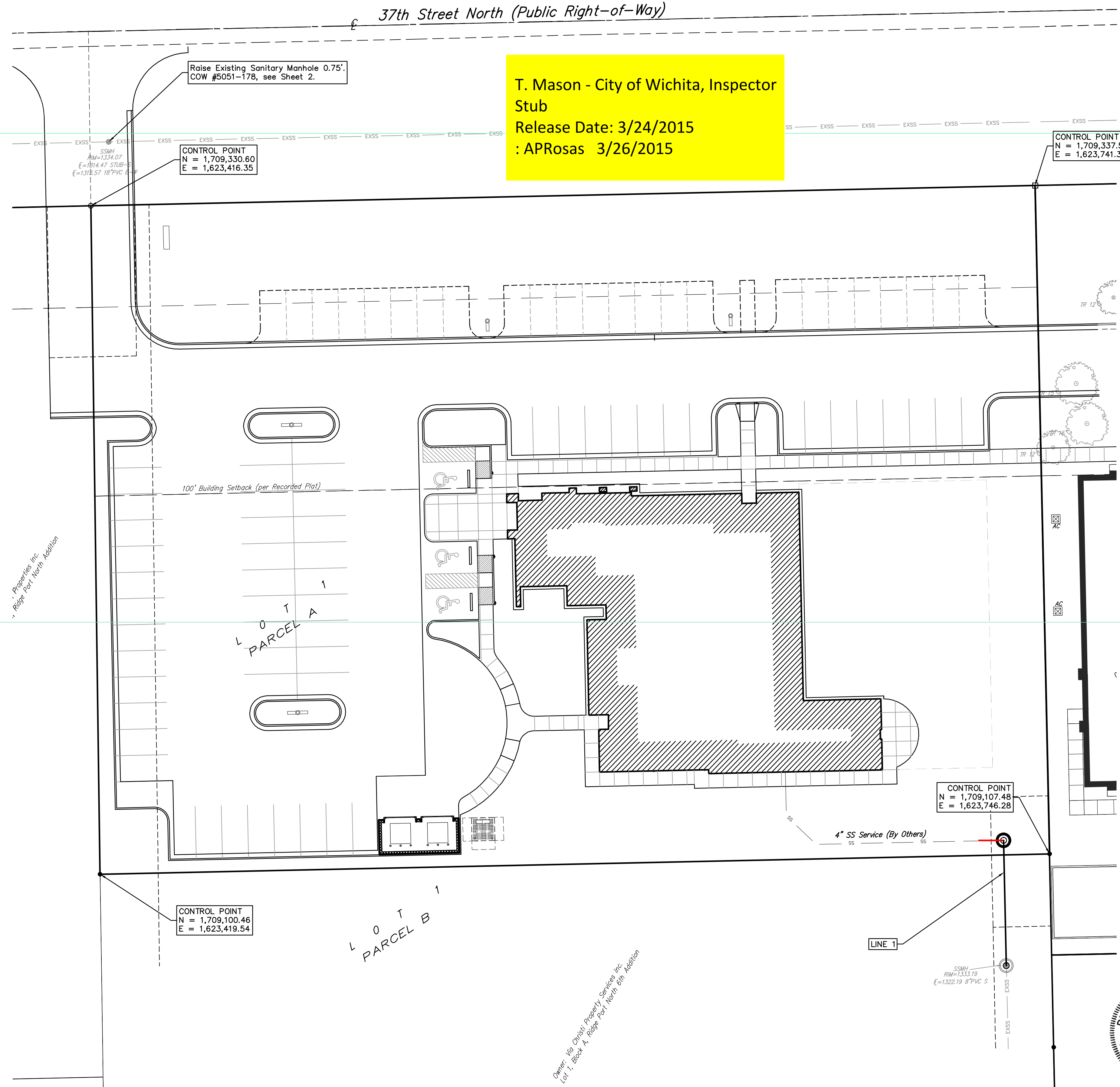
September 2014

AS BUILTS

Contractor:
Ewertz
Excavation
3/10/2015

Project Inspector:
Larry Gann
KEMILLER
ENGINEERING, P.A.
117 E. Lewis, Wichita, KS 67202 (316)294-0242

T. Mason - City of Wichita, Inspector
Stub
Release Date: 3/24/2015
: APRosas 3/26/2015



Sheet Index

| | |
|---------------------|---|
| Title Sheet | 1 |
| Line Plan/Profile | 2 |
| Manhole Detail | 3 |
| Ring & Cover Detail | 4 |
| Plat Copy | 5 |

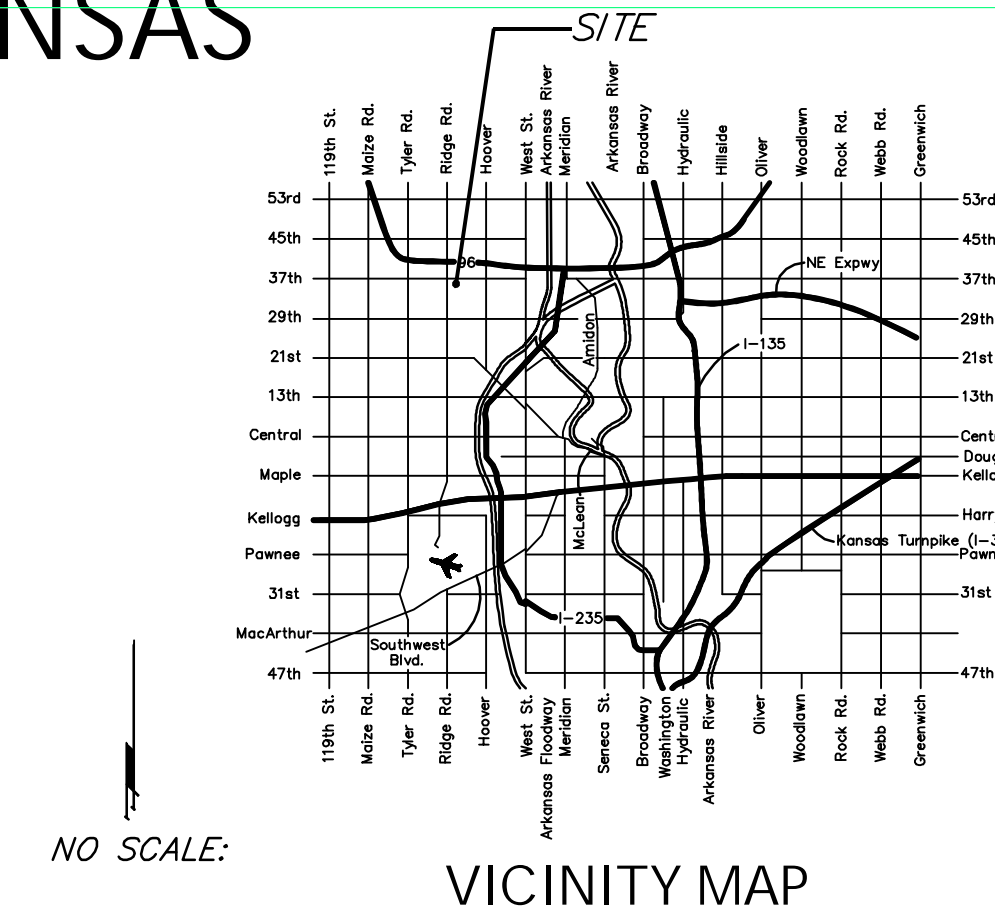
Details available at City of Wichita web site at <http://www.wichita.gov/Government/Departments/PWU/StandardsConstruction/> or by request.

Benchmarks

SITE BENCHMARK
Chiseled square on top of inlet on east side of
Via Christi Ridge Plaza approximately 403' south
of south lot line of Lot 1, Block A, Ridge Port
North 6th Addition.
Elevation=1330.89 (NAVD 88)

- Contractor will be required to provide notice to utility companies a minimum of forty-eight (48) hours prior to any excavation, as follows:

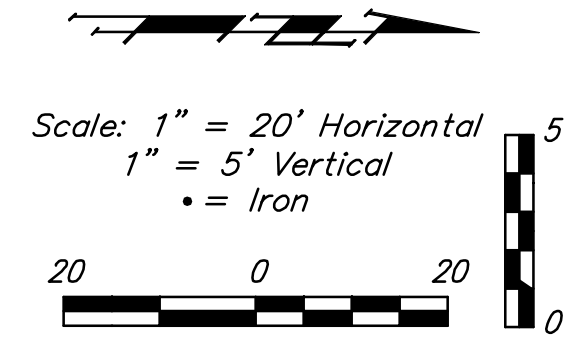
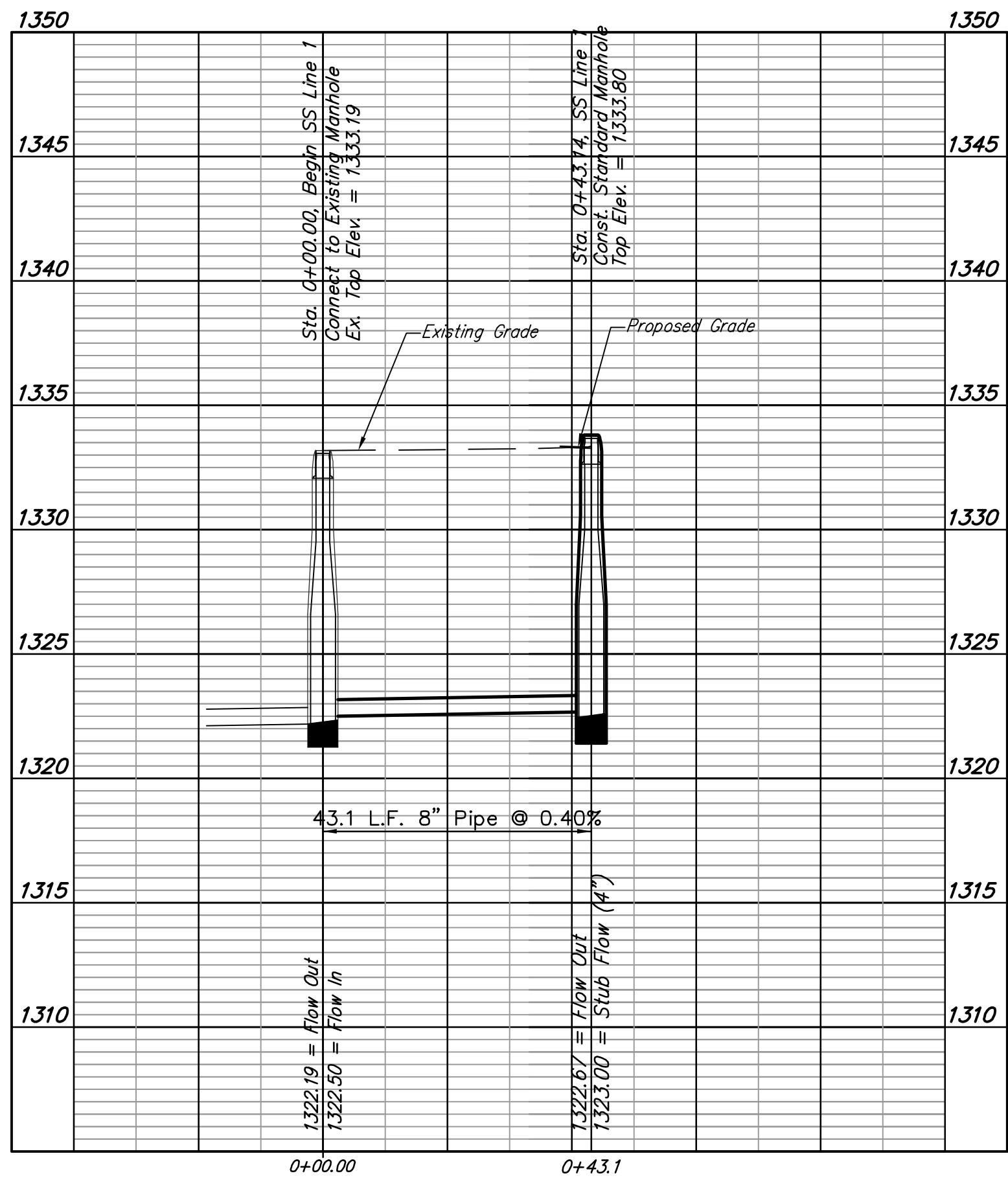
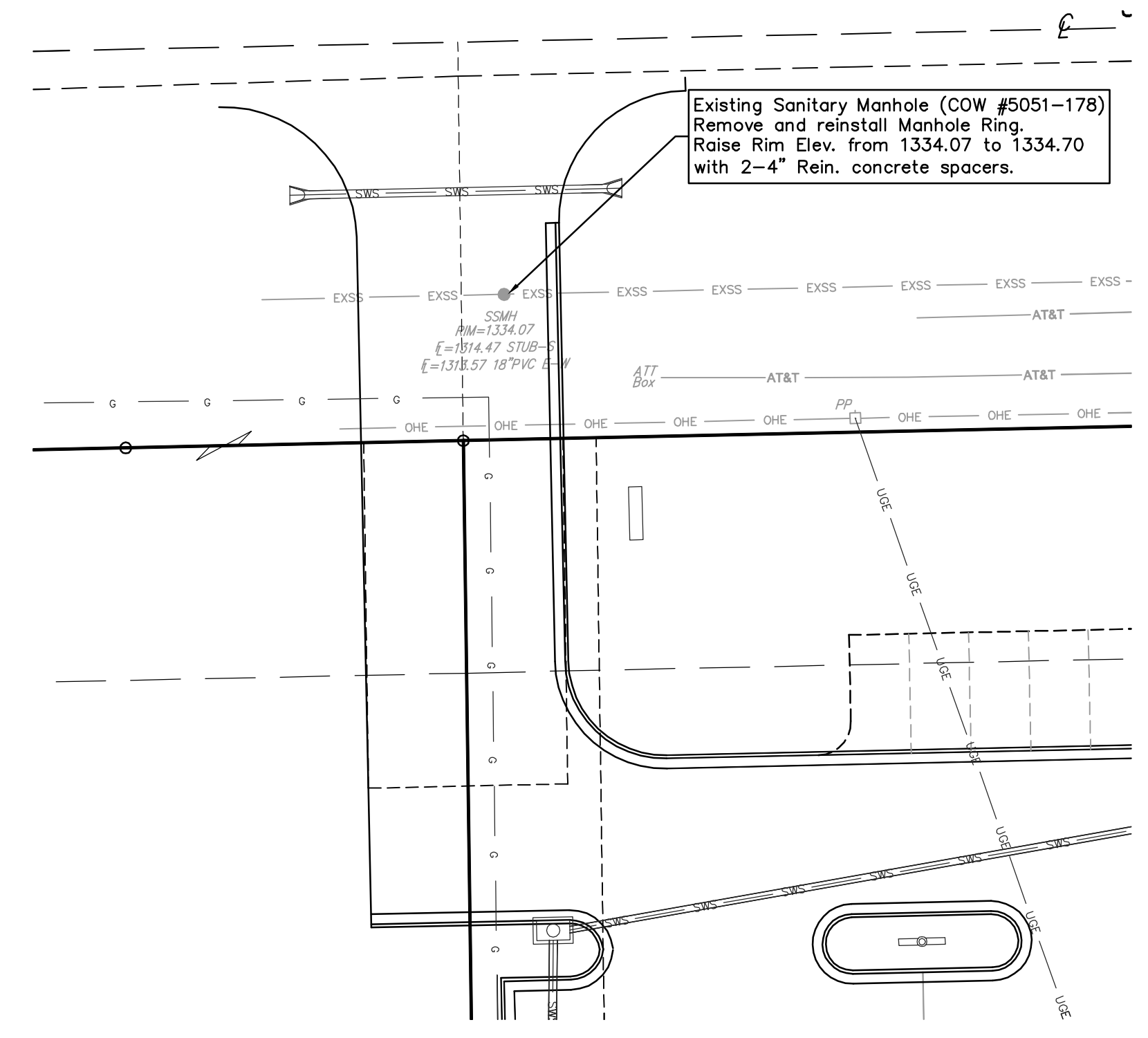
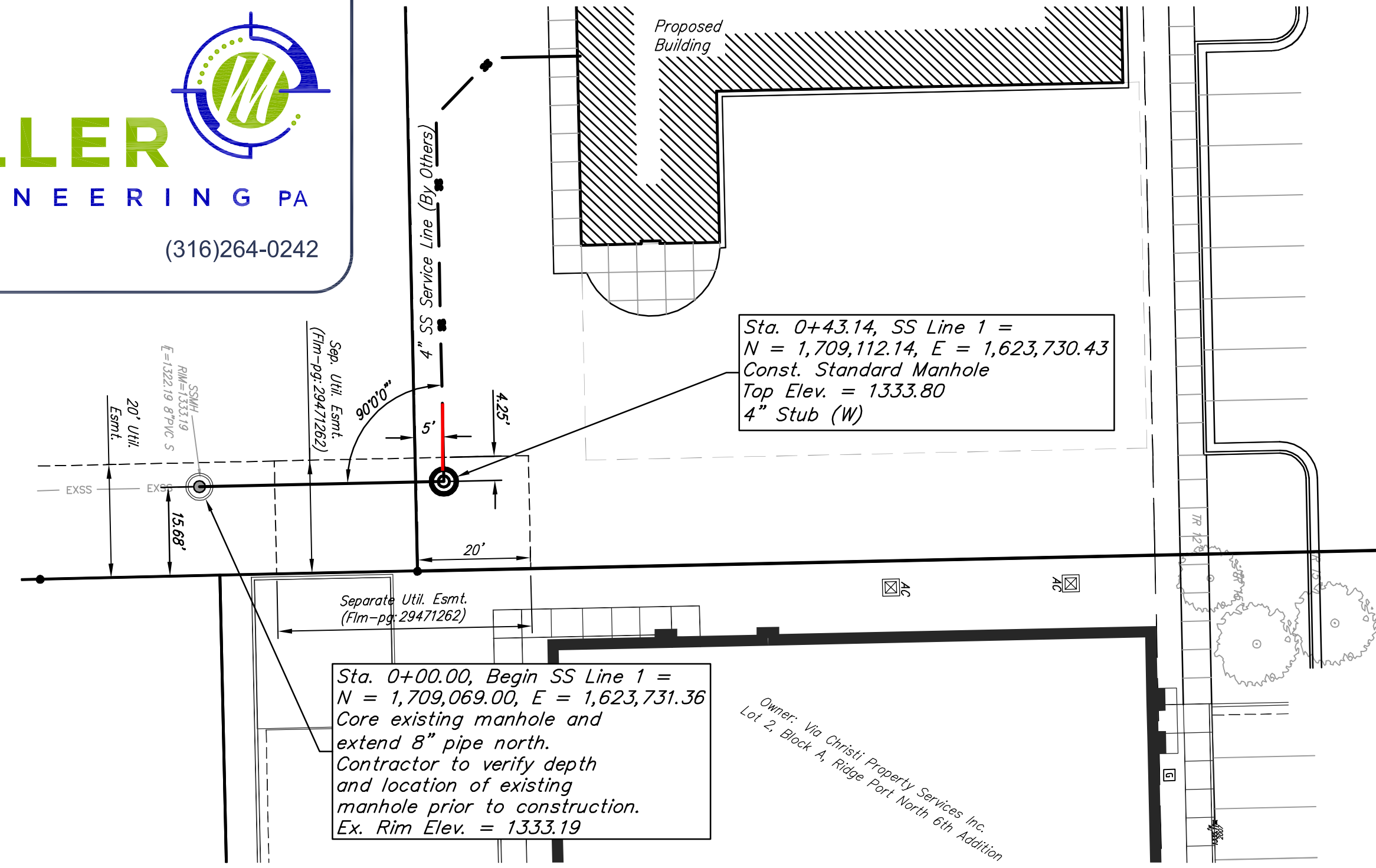
| | |
|------------------------------------|----------------|
| Kansas One-Call | 687-2470 |
| Cox Communications | 262-4270 |
| Kansas Gas Service | 1-888-482-4950 |
| Westar Energy | 383-8650 |
| Black Hills Energy (Gas) | 1-800-303-0357 |
| AT&T | 268-2245 |
| City of Wichita Water Dept. | 268-4563 |
| City of Wichita Sewer Maint. | 268-4024 |
| City of Wichita Storm Sewer Maint. | 268-4090 |
| City of Wichita Traffic Maint. | 268-4034 |
- Utility service lines, poles, valve boxes, meters, and etcetera are to be adjusted as necessary by others prior to construction unless the plans specifically call for their adjustment by the Contractor or unless the plans specifically identify a utility to be adjusted by its owner during construction. Existing utilities and their location, as shown on the plans, represent the best information obtainable for design. The Contractor will be required to work around existing utilities within the right-of-way which do not conflict with proposed construction.
- All disturbed R/W areas not intended for pavement or sidewalk construction shall be seeded with Kansas Premium Fescue Blend at a rate of 8 lb./1000 Sq. Ft., fertilized with a 16-20-6 ratio at a rate of 4 lb./1000 Sq. Ft., and mulched with Prairie Hay at a rate of 92 lb./1000 Sq. Ft. Mulch shall be "patted" with forks or punched into soil to reduce loss due to wind.
- Rubble from the removal of miscellaneous structures and excess excavation which is to be wasted shall be disposed of on sites to be provided by the Contractor. These sites shall be approved by the Engineer as to suitability, appearance and site location. Locations, in the opinion of the Engineer, that will leave an unsightly appearance will not be approved. All disposal sites must be approved by the Kansas Department of Health and Environment. Material either stockpiled or disposed of in a flood plain would require a Kansas State Board of Agriculture permit. Any material dumped in waters of the United States or wetlands is subject to U.S. Corps. of Engineers permitting regulations. Any material buried or stockpiled beyond approved construction limits would require additional archaeological investigations unless buried in a previously approved borrow location.
- Contractor shall furnish the inspector with a copy of the manufacturer's certification for any pipe used on this project after completion of pipe installation. The engineer will not certify the project to the city until pipe certification has been received.
- Trees and shrubs in public right-of-way which are in direct conflict with proposed new construction shall be removed by the Contractor with the Engineer's approval. Trees and shrubs which are not in direct conflict with proposed new construction shall be saved and protected from damage.
- All sewer lines and appurtenances shall be installed in accordance with the most recent edition of City of Wichita, Kansas Standard Specifications for the Construction of City Projects.
- Contractor shall not start work on the project until the project inspector is assigned to the project and is present on the site. Contractor shall not start on the project until all necessary bonds and permits have been obtained. Bonds may include but are not limited to Statutory, Performance & Maintenance Any work done without inspection will be required to be uncovered for inspection.



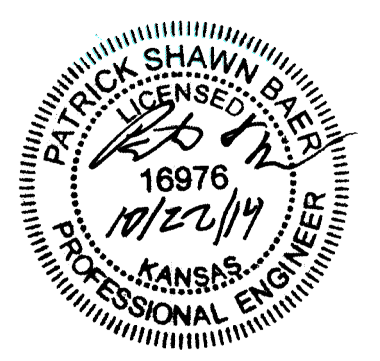
AS BUILTS



117 E. Lewis,
Wichita, KS 67202 (316)264-0242

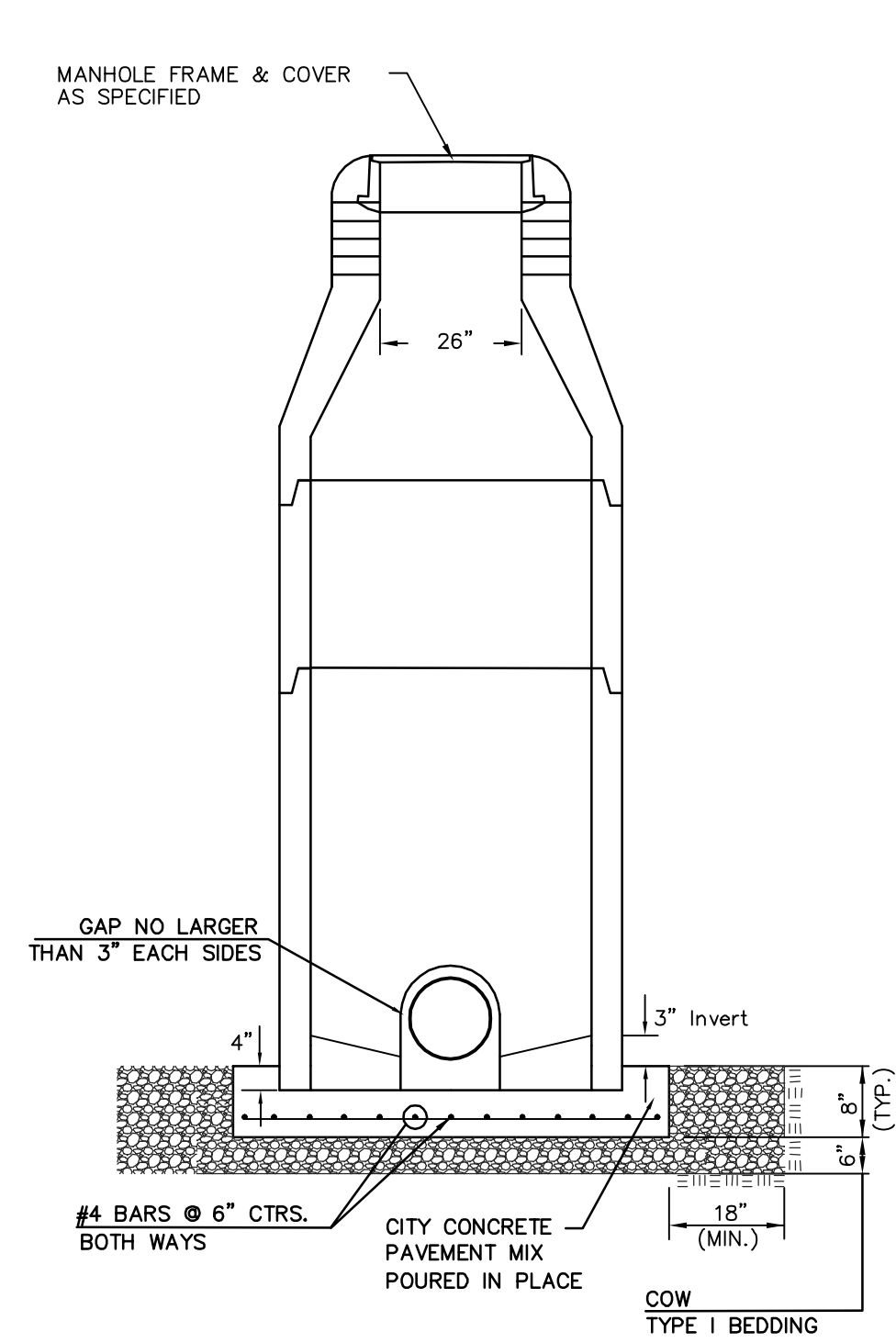


BENCHMARK
Chiseled square on top of inlet on east side
of Via Christi Ridge Plaza approximately 403'
south of south lot line of Lot 1, Block A,
Ridge Port North 6th Addition.
Elevation=1330.89 (NAVD 88)

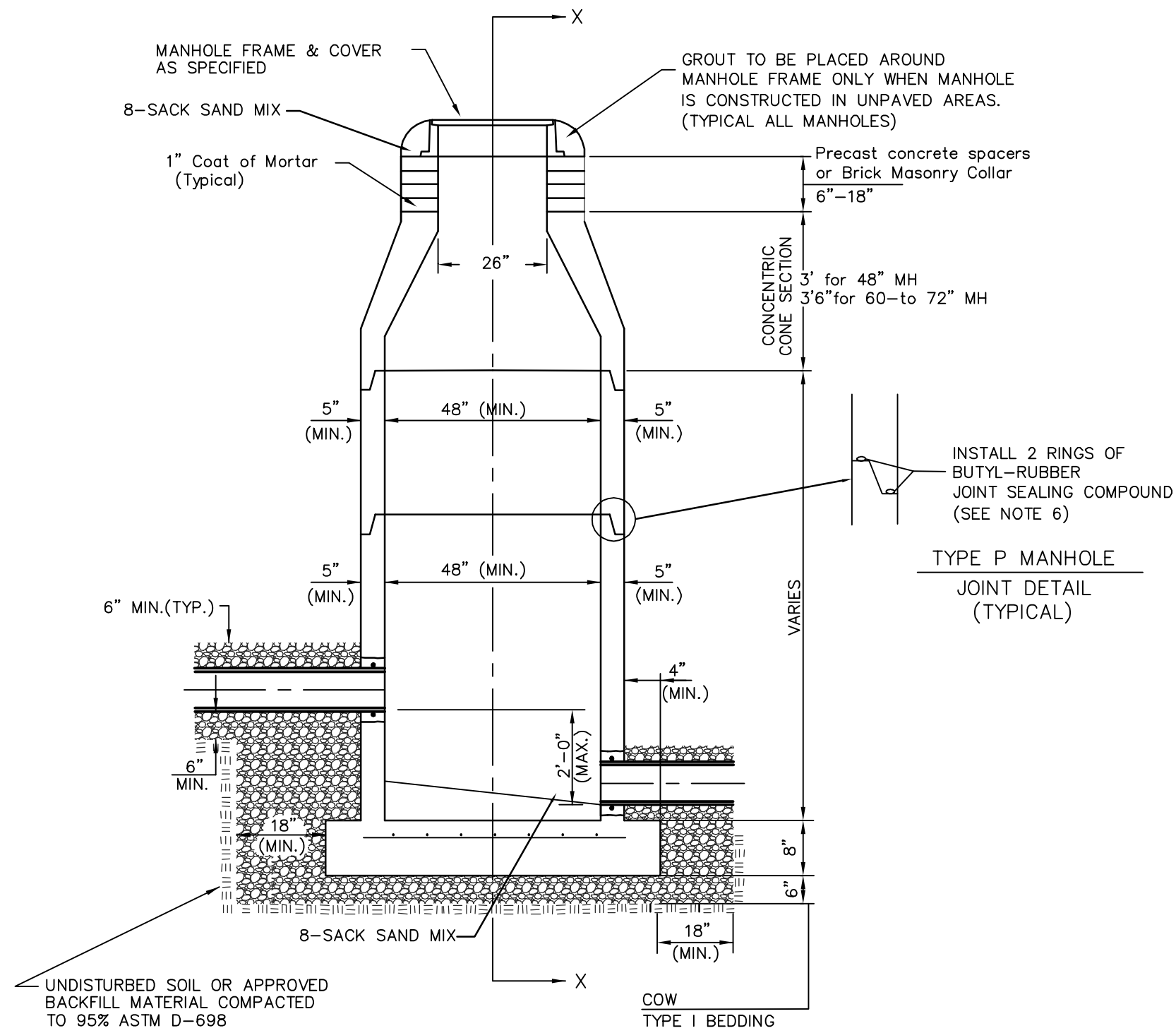


Baughman Company, P.A.
315 E.H.S. Wichita, KS 67211 F 316-262-7271 F 316-262-0149
ENGINEERING | SURVEYING | KANSAS | LICENSED ARCHITECTURE

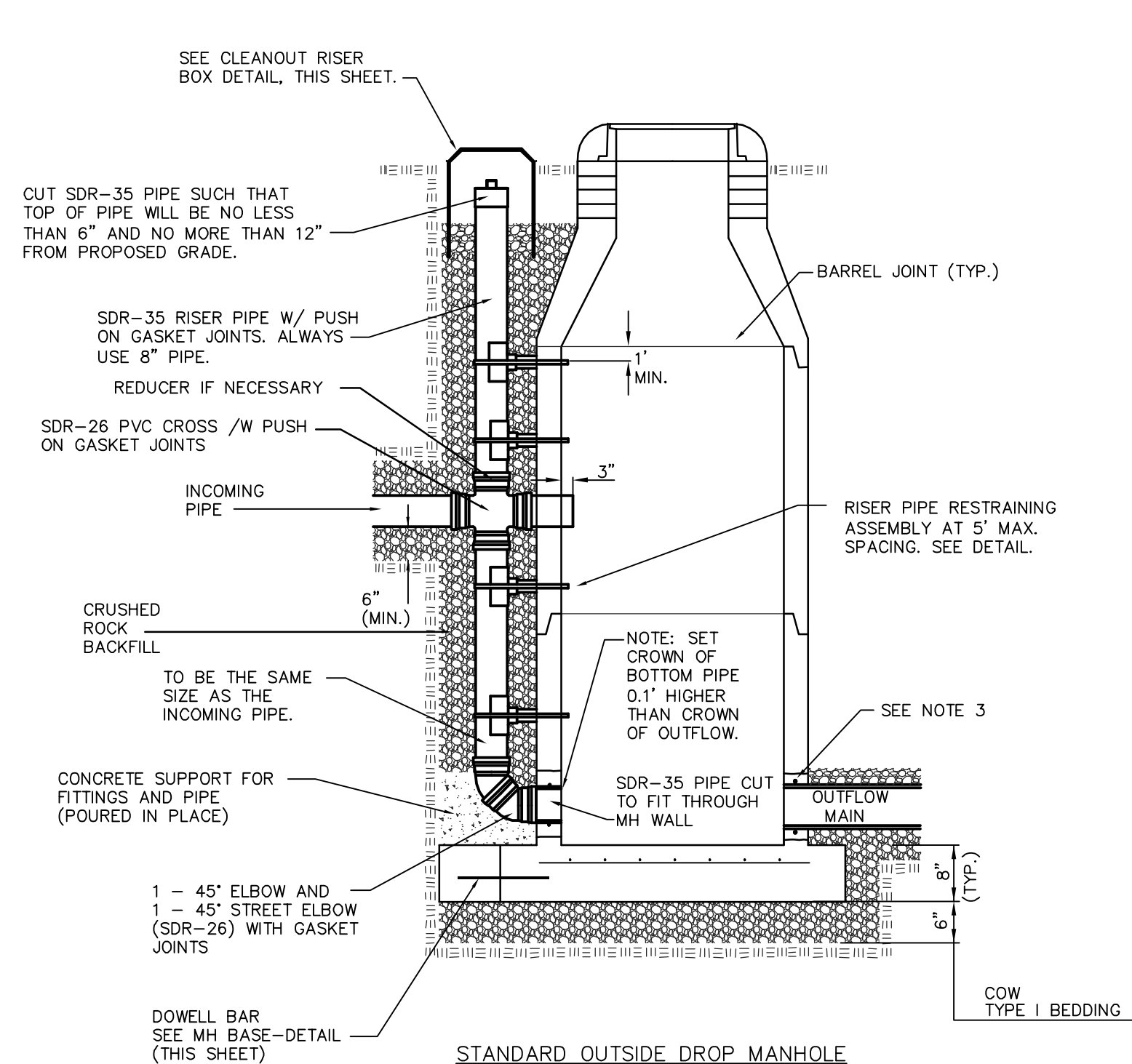
Lot 1, Parcel A, Ridge Port North 6th Addition
LINE 1
Sanitary Sewer Improvements



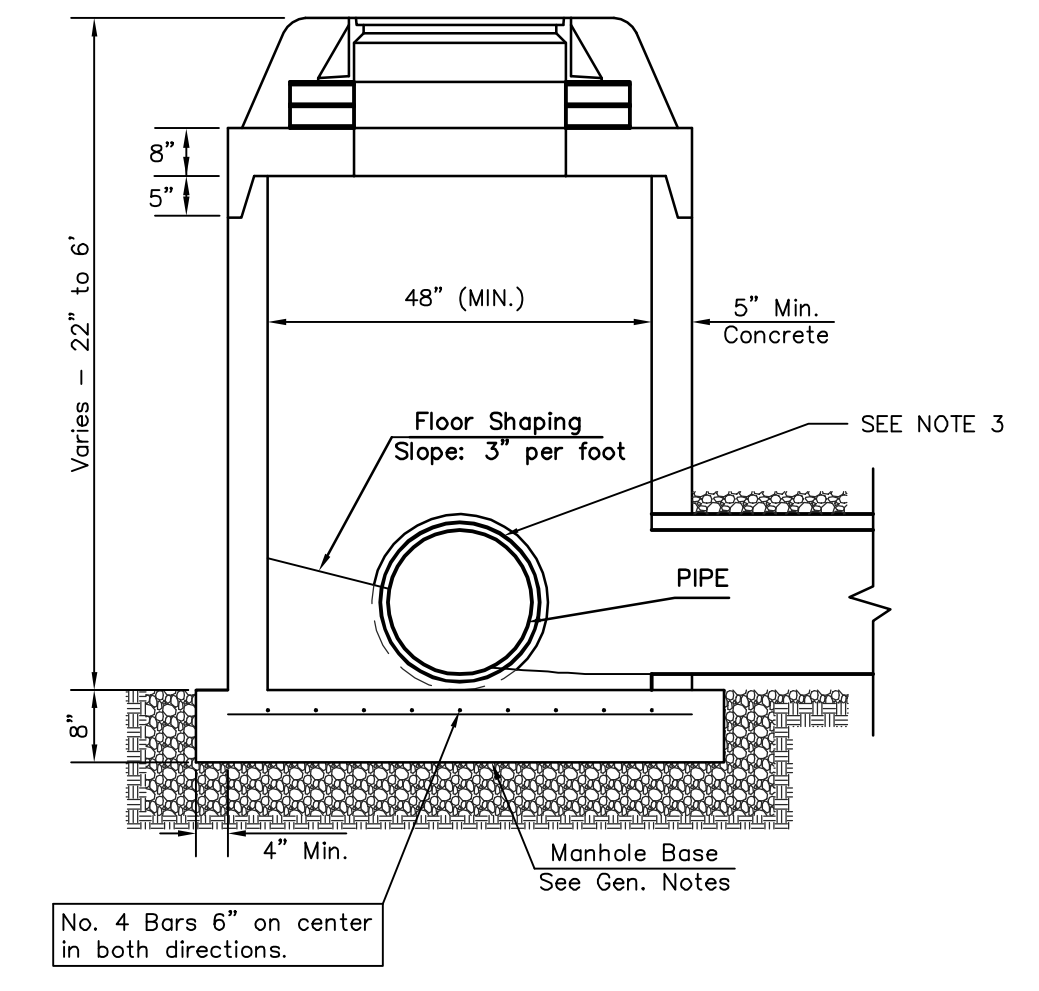
DOG HOUSE MANHOLE
(OVER EXISTING PIPE)
Not to Scale



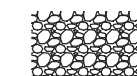

STANDARD MANHOLE
Not to Scale



STANDARD OUTSIDE DROP MANHOLE
Not to Scale

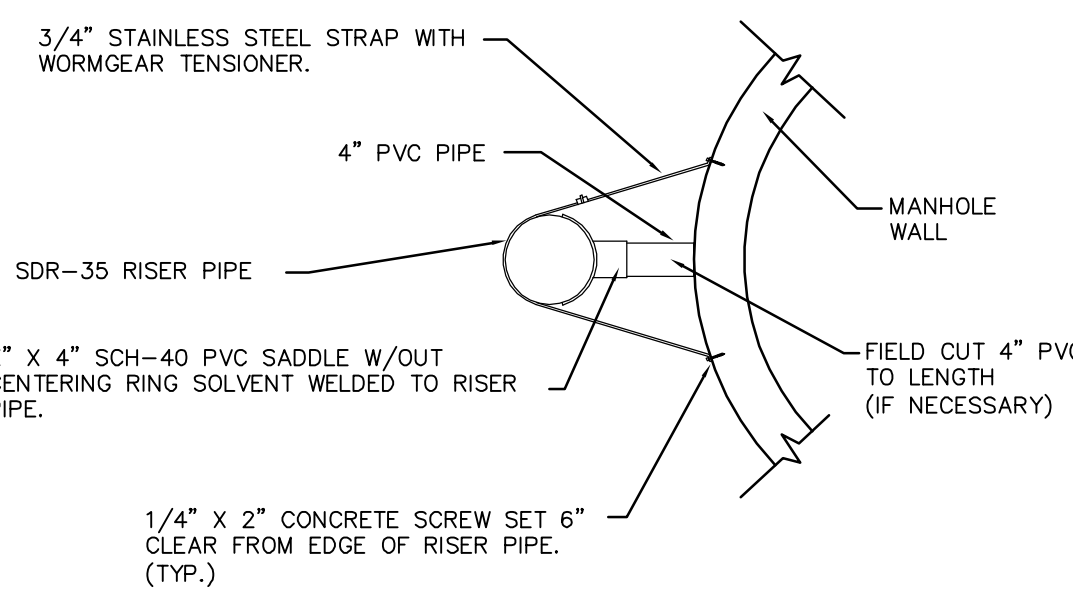


SHALLOW MANHOLE
Not to Scale

 = COW TYPE I BEDDING
 = UNDISTURBED SOIL

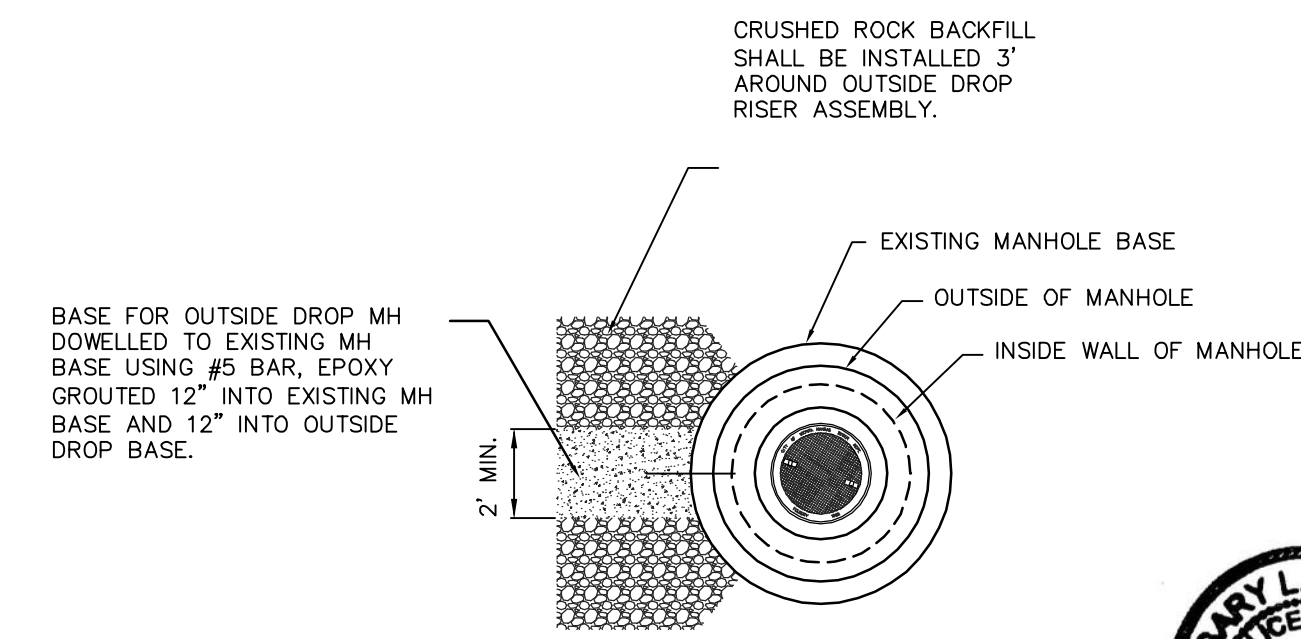
PRECAST MANHOLE GENERAL NOTES

- ALL PRECAST CONCRETE MANHOLE SECTIONS SHALL CONFORM TO THE LATEST REVISIONS OF A.S.T.M. C478 AS MODIFIED BY THE SPECIFICATIONS.
- NON-SHRINK GROUT SHALL BE NON-METALLIC TYPE.
- APPROVED FLEXIBLE WATERSTOP SHALL BE INSTALLED TO JOIN THE SEWER PIPE TO THE MANHOLE WALL. THE SEWER PIPE SHALL BE SUPPORTED WITH CRUSHED ROCK A MINIMUM OF 3 FEET FROM THE MANHOLE WALL AND TO THE FIRST JOINT FOR V.C.P. SUCH THAT THE JOINT REMAINS FLEXIBLE.
- ALL INSIDE SURFACES OF THE CONCRETE MANHOLE WHICH WOULD BE EXPOSED TO SEWER GAS SHALL BE COATED PER SECTION 804.4 OF STANDARD SPECIFICATIONS.
- EXTERIOR MANHOLE WALLS SHALL BE COATED PER SECTION 804.4 OF STANDARD SPECIFICATIONS.
- JOINT SEALING COMPOUND SHALL BE PER 804.4 OF STANDARD SPECIFICATIONS.
- ALL MANHOLE SECTION JOINTS THAT WILL BE IN GROUNDWATER OR GREATER THAN 12' DEEP SHALL BE WRAPPED WITH AN EXTERNAL JOINT SEAL PER SECTION 804.4 OF STANDARD SPECIFICATIONS, AS INDICATED BY THE PLANS.
- PRECAST MANHOLES SHALL BE SET AT LEAST 4 INCHES INTO THE MANHOLE BASE FOR DOG HOUSE MANHOLES.
- TOP OF MANHOLE FLOOR SLAB SHALL BE AT LEAST 3 INCHES BELOW THE FLOW LINE OF THE OUTLET PIPE TO INSURE SUFFICIENT MINIMUM THICKNESS OF SHAPED INVERT.
- LIFTING HOLES SHALL BE FILLED WITH NON-SHRINK GROUT AND THE INTERIOR SURFACE COATED AS SPECIFIED.
- MORTAR USED IN MASONRY CONSTRUCTION SHALL CONTAIN 8 SACKS OF CEMENT PER CUBIC YARD. CONCRETE USED IN MANHOLE BASES SHALL CONFORM TO THE REQUIREMENTS OF CONCRETE FOR CONCRETE PAVEMENT CONSTRUCTION AS SPECIFIED IN THE CITY STANDARD PAVING SPECIFICATIONS USING CITY CONCRETE PAVEMENT MIX WITHOUT AIR ENTRAINING ADMIXTURE. MORTAR SHALL BE PLACED AROUND THE MANHOLE RING AS SHOWN ON THE DRAWINGS WHEN MANHOLES ARE CONSTRUCTED IN UNPAVED AREAS. COMPLETED MANHOLE SHALL BE WITHOUT LEAKS AND WATER TIGHT.
- REINFORCING STEEL SHALL BE INSTALLED IN THE MANHOLE BASES AND SHALL CONSIST OF NO.4 BARS PLACED ON 6" CENTERS IN BOTH DIRECTIONS. THE MANHOLE BASE REINFORCEMENT SHALL BE PLACED AT LEAST 3" ABOVE THE BOTTOM OF THE MANHOLE BASE. ALL COSTS FOR FURNISHING AND INSTALLING REINFORCING STEEL SHALL BE INCLUDED IN THE UNIT PRICE BID FOR THE MANHOLE.
- WALL THICKNESS SHALL BE 1" GREATER THAN MANHOLE DIAMETER IN FEET.
- OPENINGS SHALL BE CORE DRILLED INTO THE MANHOLE WALL WHEN OUTSIDE DROPS ARE CONSTRUCTED ON EXISTING MANHOLES. SUCH OPENINGS DRILLED INTO EXISTING MANHOLES SHALL BE AS SMALL AS PRACTICAL TO FACILITATE INSTALLING AND GROUTING THE NEW PIPE IN PLACE. WATERSTOP GASKETS SHALL BE USED WITH P.V.C. PIPE. THE NEW PIPE SHALL BE GROUTED INTO THE OPENING USING AN APPROVED NONSHRINK GROUT FOR THE FULL MANHOLE WALL THICKNESS. THE EXTERIOR OF THE COMPLETED CONNECTION SHALL BE SEALED WITH AN APPROVED BITUMINOUS COATING SUCH THAT THE CONNECTION WILL BE WATER TIGHT. FLOOR OF MANHOLE SHALL BE MODIFIED TO FORM NEW FLOW CHANNEL FOR THE NEW CONNECTION AS INDICATED BY THE DRAWING. THIS WORK, INCLUDING MODIFICATION OF MANHOLE FLOOR, SHALL BE PAID FOR AT THE UNIT PRICE BID FOR OUTSIDE DROP STACK CONSTRUCTED ON EXISTING MANHOLE.
- THE FLOORS OF ALL MANHOLES SHALL BE SHAPED WITH FLOW CHANNELS SUCH THAT THE MANHOLES WILL BE SELF CLEANING AND FREE OF AREAS WHERE SOLIDS COULD BE DEPOSITED AS SEWAGE FLOWS THROUGH THE MANHOLE FROM ALL INLET PIPES TO THE OUTLET PIPE. FLOW CHANNELS SHALL BE FORMED TO MATCH THE BOTTOM HALVES OF THE INFLOWING PIPES AND THE OUTFLOWING PIPE AS SHOWN BY THE DRAWINGS. MANHOLE FLOORS SHALL HAVE SLOPES OF 3 INCHES PER FOOT IN THE AREAS OUTSIDE OF THE FLOW CHANNELS SLOPED TOWARD THE FLOW CHANNELS. PIPES LAID THROUGH MANHOLES SHALL HAVE THE TOP HALF REMOVED TO NEAT LINES FOR THE FULL INSIDE DIAMETER OF THE MANHOLE. MANHOLE FLOORS SHALL THEN BE SHAPED AROUND THE BOTTOM HALF OF THE PIPE WHICH FORMS THE FLOW CHANNEL.
- MANHOLE COVER CASTINGS AND MANHOLE FRAME CASTINGS SHALL CONFORM TO THE REQUIREMENTS AS INDICATED IN THE STANDARD SPECIFICATIONS AND AS SHOWN IN THE STANDARD DETAIL DRAWING.
- THE VERTICAL DROP IN STANDARD MANHOLES SHALL NOT EXCEED 2' REGARDLESS OF PIPE SIZE. THE CROWNS OF INFLOWING PIPES SHALL NEVER BE SET LOWER THAN THE CROWN OF THE OUTFLOWING PIPE.
- STANDARD MANHOLES SHALL BE BID AS STANDARD MANHOLES FOR THE TYPE AND DIAMETER INDICATED. OUTSIDE DROP MANHOLES SHALL BE BID AS STANDARD OUTSIDE DROP MANHOLES FOR THE TYPE AND DIAMETER INDICATED. ALL MANHOLE DIAMETERS WILL BE 4' UNLESS INDICATED OTHERWISE.
- PRECAST CONCRETE SPACERS OR BRICK MASONRY COLLAR SHALL BE INSTALLED BETWEEN THE CAST IRON FRAME AND THE CONCENTRIC CONE. THE COLLAR WILL HAVE 8" WALLS AND A VERTICAL HEIGHT OF 6" MINIMUM AND 18" MAXIMUM. A 1" COAT OF MORTAR WILL BE PLASTERED ON THE OUTSIDE OF THE COLLAR. THE USE OF PRE-CAST CONCRETE SPACERS FOR MANHOLE TOP ADJUSTMENT IS ALSO ALLOWED.
- THE FULL DIAMETER OF THE MANHOLE SHALL EXTEND THE ENTIRE DEPTH OF THE MANHOLE TO THE CONE SECTION. NO REDUCTION IN MANHOLE DIAMETER WILL BE ALLOWED.
- REFER TO PLANS FOR SIZE OF OUTSIDE DROP RISER, SADDLES AND CROSS.

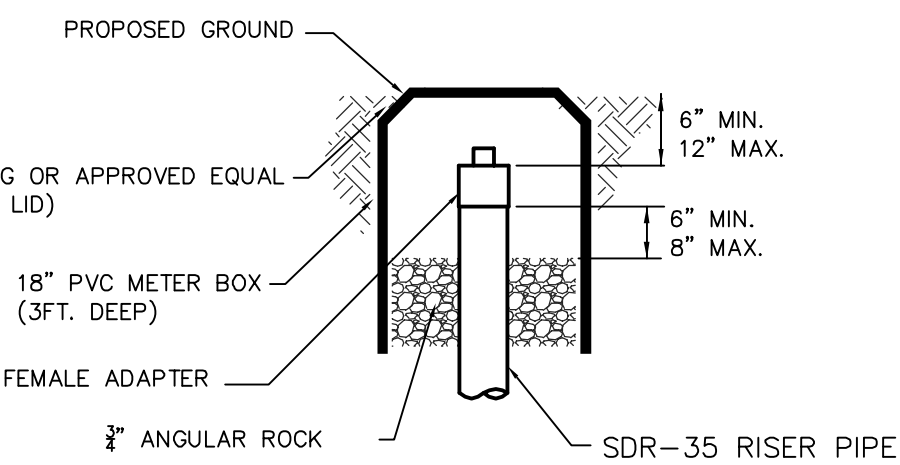


RISER PIPE RESTRAINING ASSEMBLY
Not to Scale

| SANITARY SEWER MANHOLE DIAMETERS | | |
|----------------------------------|---------|-----------|
| DIAMETER | DEPTH | PIPE SIZE |
| 4' | 0'-15' | 8"-18" |
| 5' | 15'-30' | 21"-30" |
| 6' | >30' | 36"-60" |



MH BASE DETAIL
Not to Scale



CLEANOUT RISER BOX DETAIL
Not to Scale

CITY OF WICHITA
PUBLIC WORKS & UTILITIES
ENGINEERING DIVISION

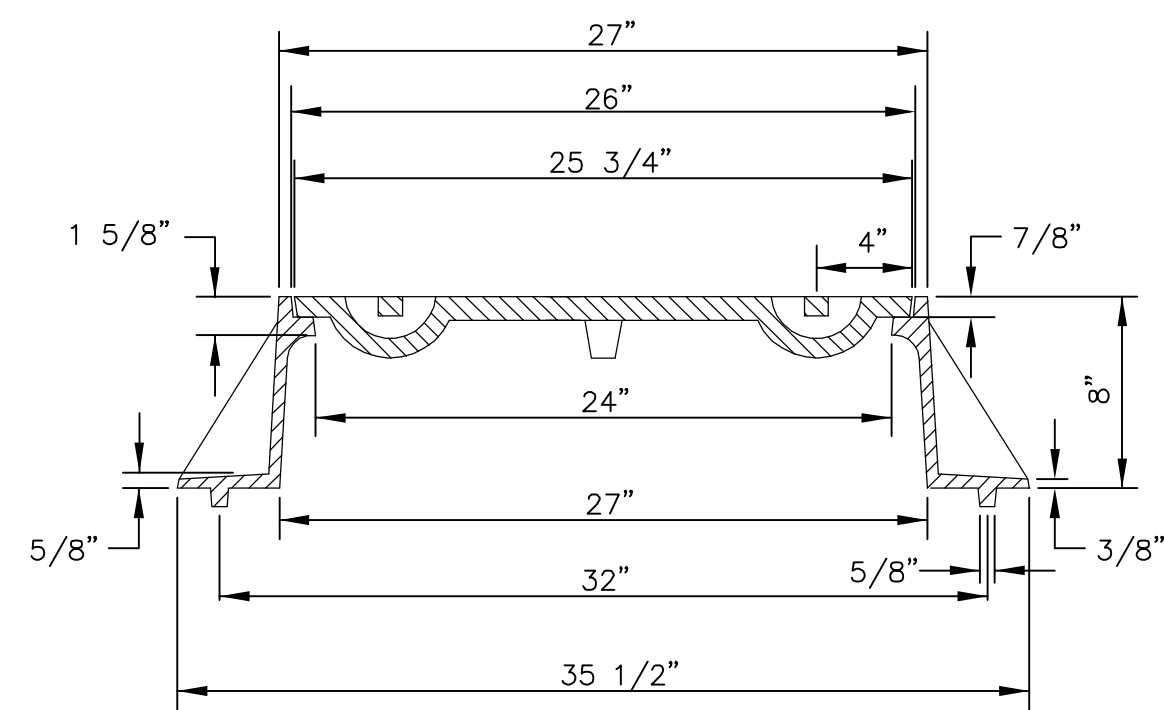
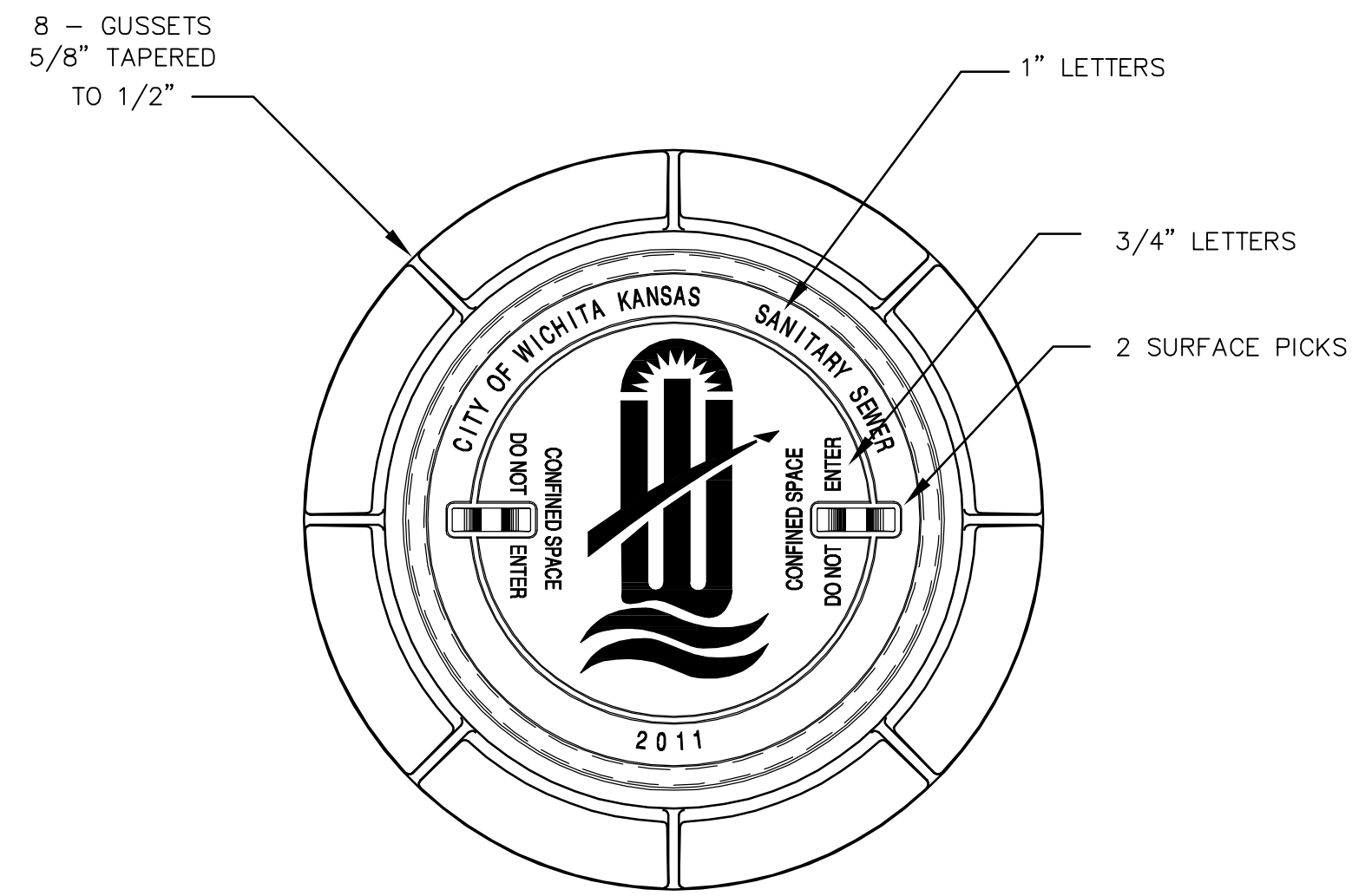
PRECAST SANITARY SEWER MANHOLE
CITY ENGINEER
GARY JANZEN, P.E.

| | | |
|-----------------------------------|-----------------------------|----------------------|
| PROJECT NUMBER 2213 PPS | OCA NUMBER 607861 | DATE 07/14 |
|-----------------------------------|-----------------------------|----------------------|

CITY ENGINEER'S OFFICE
CITY HALL - SEVENTH FLOOR
455 NORTH MAIN STREET
WICHITA, KANSAS 67202-1620
(316) 268-4501

SHEET
3 of 5

REVISED JANUARY 2014

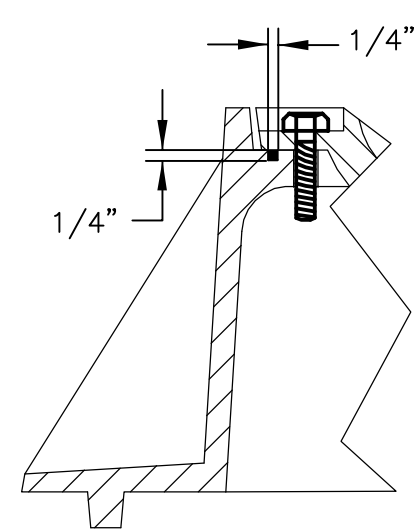
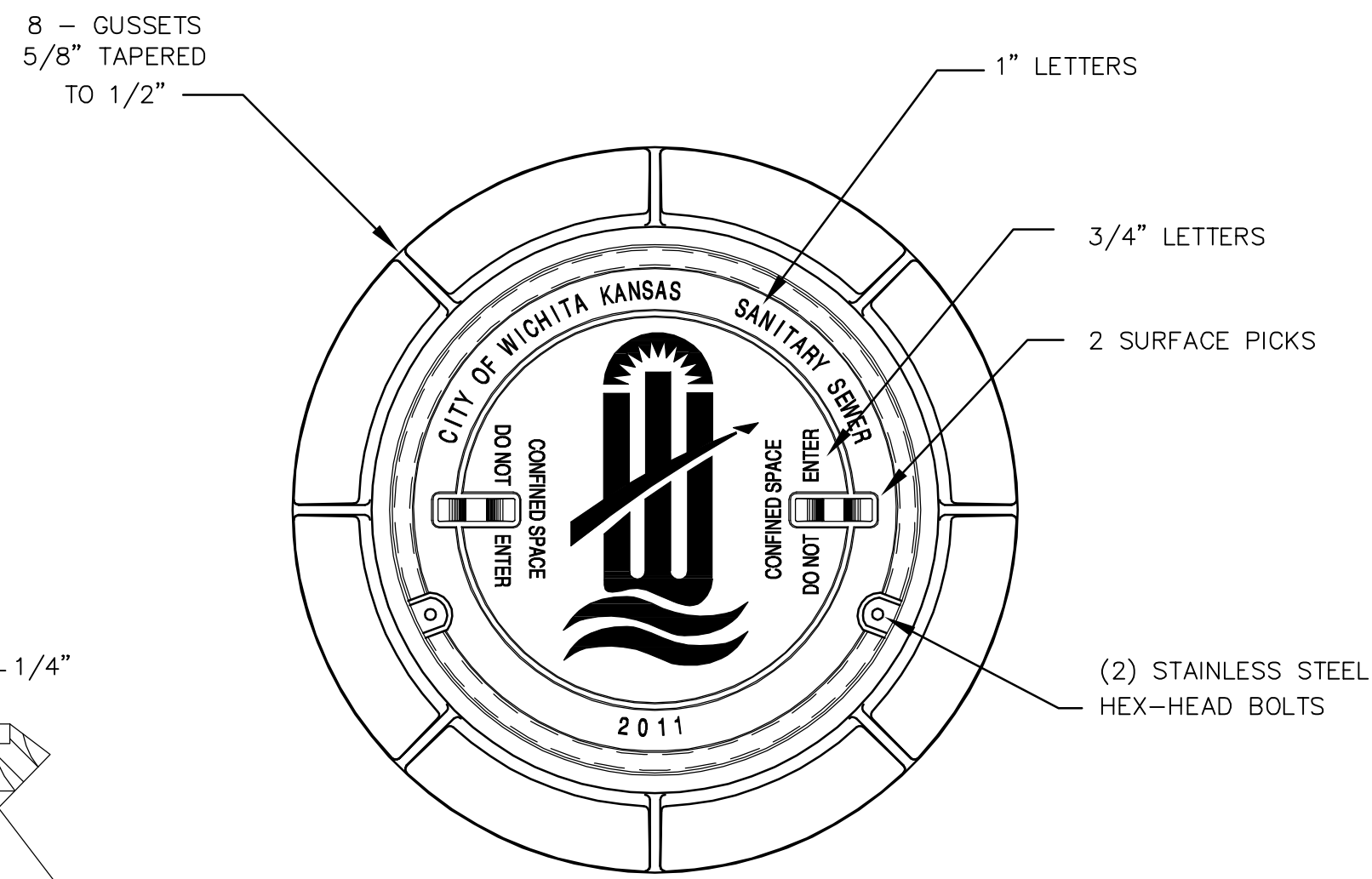


STANDARD MANHOLE FRAME & COVER

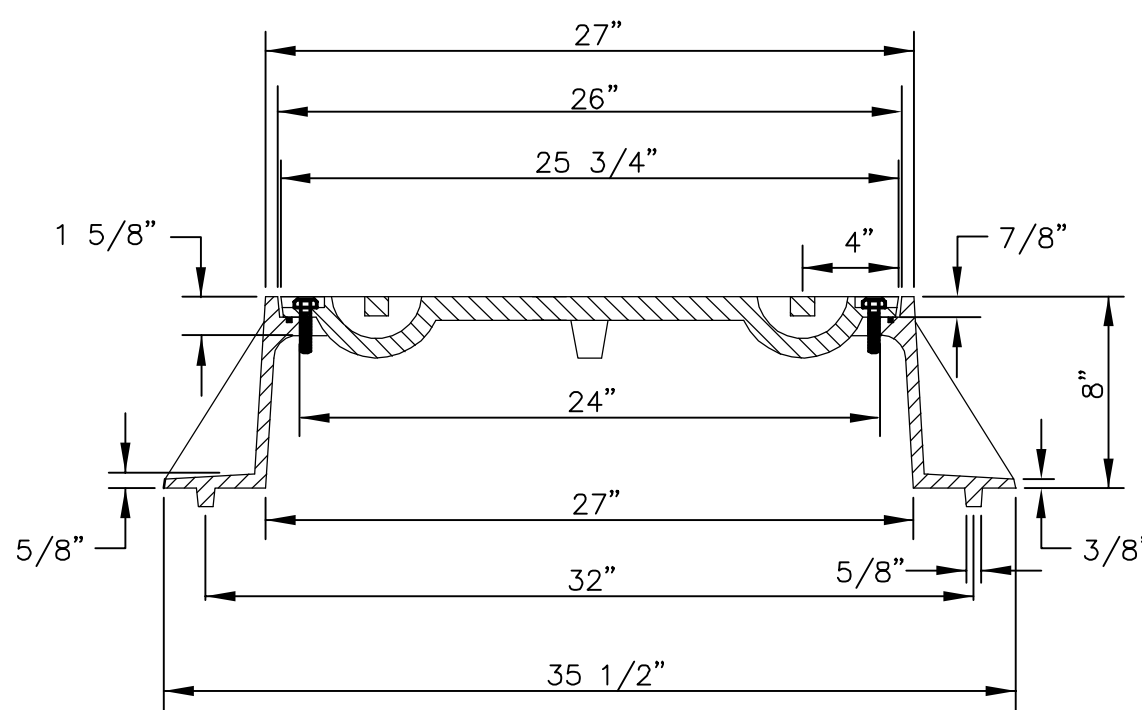
DEETER #1261 OR EJIW #1936-Z1

NOTE:

1. FURNISHED WITH MACHINED HORIZONTAL BEARING SURFACE.



DETAIL OF T-GASKET



BOLT DOWN MANHOLE FRAME & COVER

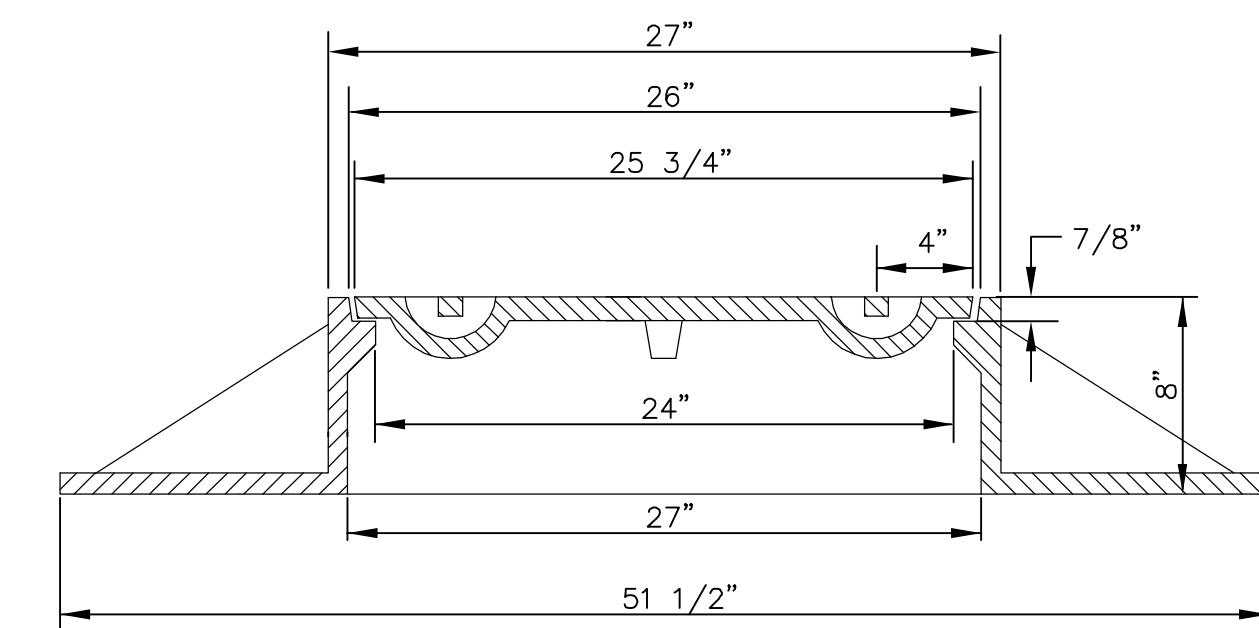
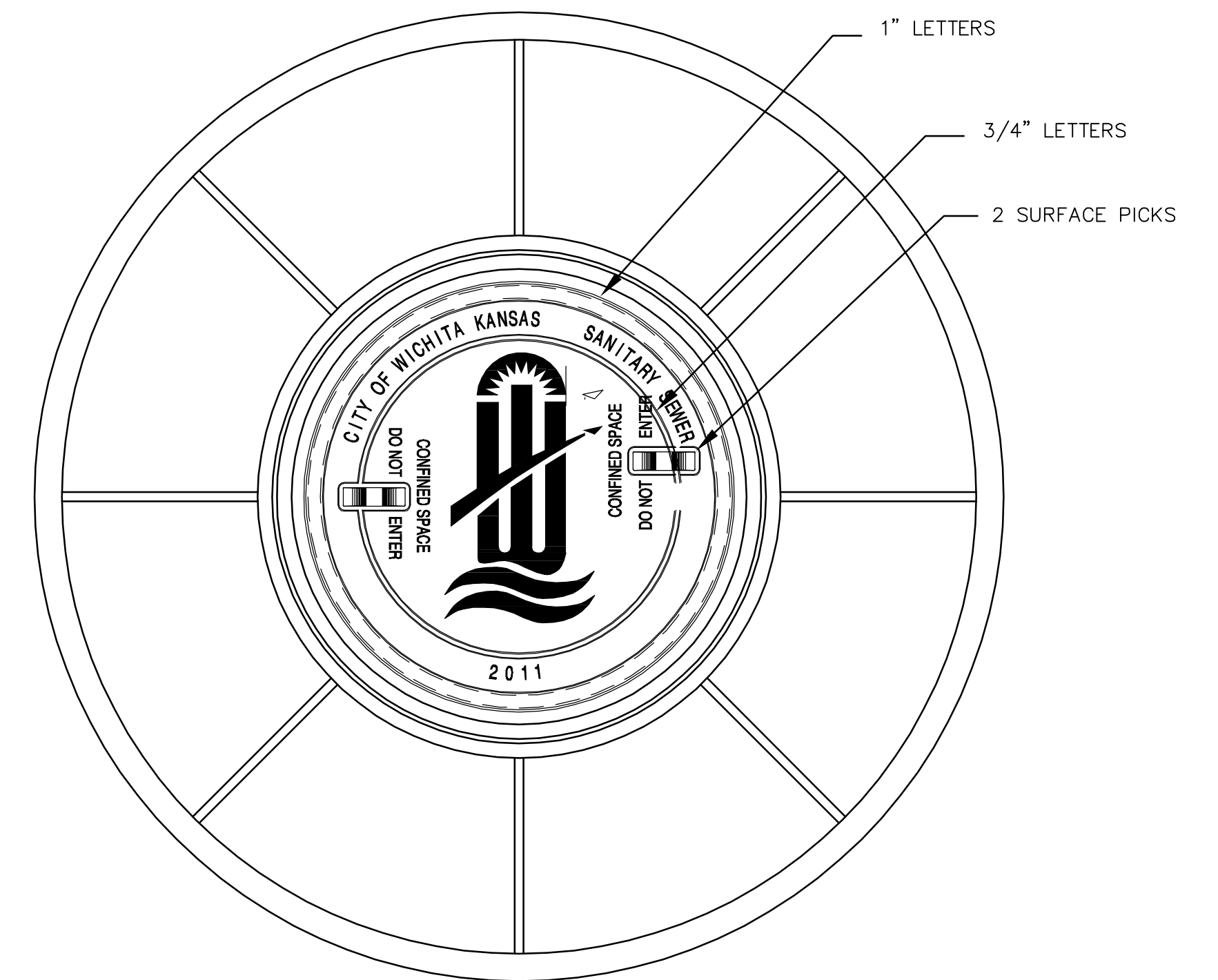
DEETER #1261 OR EJIW #1936-Z1

NOTE:

1. FURNISHED WITH MACHINED HORIZONTAL BEARING SURFACE.
2. FURNISHED WITH A T-GASKET IN THE FRAME.

GENERAL NOTES

1. MANHOLE CASTINGS SHALL BE MANUFACTURED USING GOOD QUALITY GRAY IRON CONFORMING TO CLASS 30 OF A.S.T.M. DESIGNATION A-48. DIMENSIONS SHOWN ON THE DETAILED DRAWINGS SHALL BE CONSIDERED AS MINIMUM REQUIREMENTS AND ANY DEVIATIONS FROM THE DIMENSIONS SHOWN MUST BE SPECIFICALLY APPROVED. THE FINISHED CASTINGS SHALL BE OF UNIFORM QUALITY, FREE FROM BLOWHOLES, POROSITY, HARD SPOTS, SHRINKAGE DISTORTIONS OR OTHER DEFECTS.
2. MANHOLE CASTINGS SHALL BE MANUFACTURED SUCH THAT A COVER MANUFACTURED BY ANY ONE FOUNDRY WILL FIT INTERCHANGEABLY INTO A FRAME MANUFACTURED BY ANOTHER FOUNDRY AND STILL MEET ALLOWABLE CLEARANCES AND NON-ROCKING REQUIREMENTS. THIS WILL REQUIRE MANUFACTURING OF THE MATCHING FACES ON THE COVER AND THE FRAME TO CLOSE TOLERANCES.
3. THE OUTSIDE CIRCUMFERENCE OF THE VERTICAL FACE OF THE COVER AND THE INSIDE CIRCUMFERENCE OF THE VERTICAL FACE IN THE FRAME RECESS SHALL BE MANUFACTURED TO TOLERANCES SUCH THAT THE CLEARANCE BETWEEN THE COVER AND FRAME WILL NOT EXCEED 1/8" AT ANY POINT AROUND THE CIRCUMFERENCE OF THE COVER. THE SEATING SURFACES BETWEEN THE COVER AND FRAME SHALL BE MACHINED SUCH THAT THESE SEATING SURFACES SHALL MAKE FULL CONTACT FOR THEIR FULL CIRCUMFERENCE TO PRECLUDE THE COVER FROM ROCKING IN THE FRAME.
4. THE MANHOLE FRAME AND COVER SHALL BE MARKED WITH LETTERING INDICATING THE NAME OF THE MANUFACTURER AND THE YEAR WHEN THE COVER OR FRAME WAS CAST. THE COVER SHALL BE FURTHER IDENTIFIED WITH REGARDS TO OWNERSHIP USING LETTERS AT LEAST 1 INCH IN HEIGHT. THIS IDENTIFICATION SHALL BE "CITY OF WICHITA SANITARY SEWER". THE TOP SURFACE OF THE COVER SHALL BE MANUFACTURED IN WITH CITY OF WICHITA DESIGN AS INDICATED ON THE DRAWINGS. SMOOTH BLOCKOUTS SHALL BE UTILIZED TO HIGHLIGHT THE LETTERING ON THE COVER SURFACE. THE TOTAL AREA OF SMOOTH SURFACE BLOCKOUT SHALL NOT EXCEED THE AREA AS INDICATED ON THE DRAWING. POSITIONING OF SMOOTH BLOCKOUTS AND LETTERING MAY VARY FROM THAT SHOWN ON THE DETAILED DRAWING.

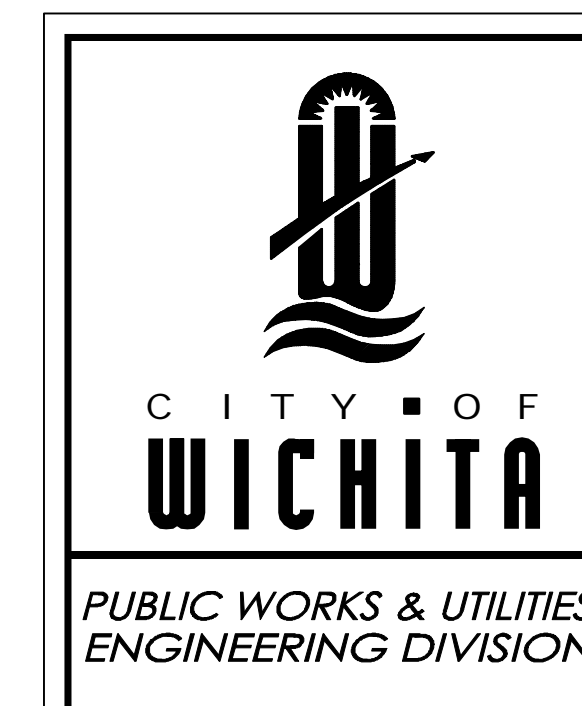


WIDE FLANGED FRAME & COVER

DEETER #1261A

NOTE:

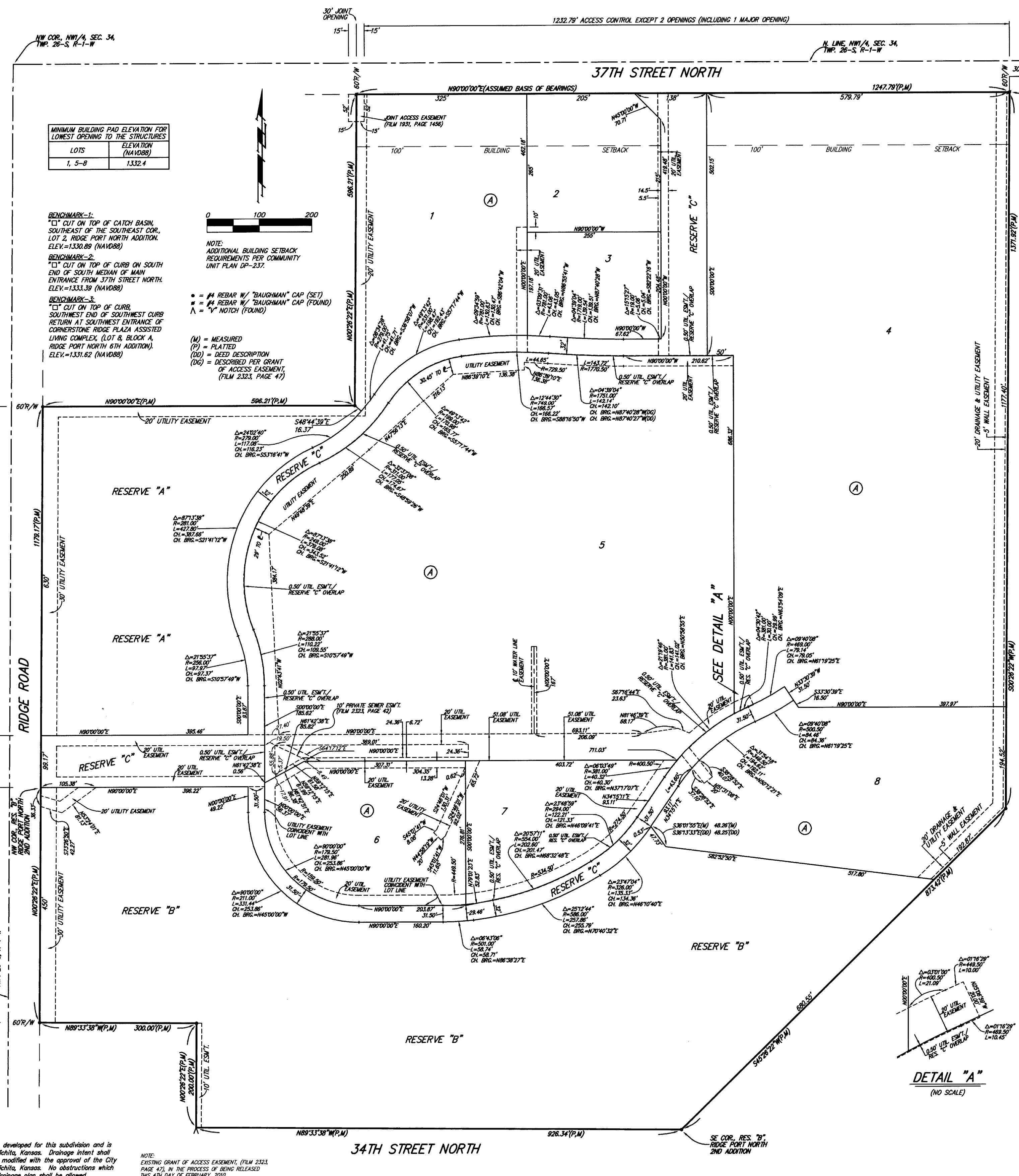
1. FURNISHED WITH MACHINED HORIZONTAL BEARING SURFACE.



| | | |
|--|-----------------------------|------------------------|
| MANHOLE FRAME AND COVER (SANITARY SEWER) | | |
| CITY ENGINEER GARY JANZEN, P.E. | | |
| PROJECT NUMBER 2213 PPS | OCA NUMBER 607861 | DATE 07/14 |
| CITY ENGINEER'S OFFICE CITY HALL - SEVENTH FLOOR 455 NORTH MAIN STREET WICHITA, KANSAS 67202-1620 (316) 268-4501 | | SHEET 4 of 5 |

RIDGE PORT NORTH 6TH ADDITION

WICHITA, SEDGWICK COUNTY, KANSAS



| LOTS | ELEVATION (NAVD88) |
|--------|--------------------|
| 1, 5-8 | 1332.4 |

BENCHMARK-1:
CUT ON TOP OF CATCH BASIN, SOUTHEAST OF THE SOUTHEAST CORN. LOT 2, RIDGE PORT NORTH ADDITION. ELEV.=1330.89 (NAVD88)

BENCHMARK-2:
CUT ON TOP OF CURB ON SOUTH END OF SOUTH MEDIAN OF MAIN ENTRANCE FROM 37TH STREET NORTH. ELEV.=1333.39 (NAVD88)

BENCHMARK-3:
CUT ON TOP OF CURB, SOUTHWEST END OF SOUTHWEST CURB RETURN AT SOUTHWEST ENTRANCE OF CORNERSTONE RIDGE PLAZA ASSISTED LIVING COMPLEX (LOT 8, BLOCK A, RIDGE PORT NORTH 6TH ADDITION). ELEV.=1331.62 (NAVD88)

NOTE:
ADDITIONAL BUILDING SETBACK REQUIREMENTS PER COMMUNITY UNIT PLAN 09-237.

• #4 REBAR W/ "BAUGHMAN" CAP (SET)
• #4 REBAR W/ "BAUGHMAN" CAP (FOUND)
• "V" NOTCH (FOUND)

(M) = MEASURED
(P) = PLATTED
(D) = DEED DESCRIPTION
(DK) = DESCRIBED PER GRANT OF ACCESS EASEMENT (FILM 2323, PAGE 47)

State of Kansas) SS We, Baughman Company, P.A., Surveyors in Sedgwick County) and state do hereby certify that we have surveyed and plotted "RIDGE PORT NORTH 6TH ADDITION", Wichita, Sedgwick County, Kansas and that the accompanying plat is a true and correct exhibit of the property surveyed, described as and being a replat of all of Lot 1, together with all of Reserves "A" and "B", Ridge Port North 2nd Addition, Wichita, Sedgwick County, Kansas.

All being situated in the NW1/4 of Sec. 34, Twp. 26-S, R-1-W of the 6th P.M., Sedgwick County, Kansas.

Existing public easements, access controls, building setback lines, and dedications being vacated by virtue of K.S.A. 12-512(b).

Baughman Company, P.A.

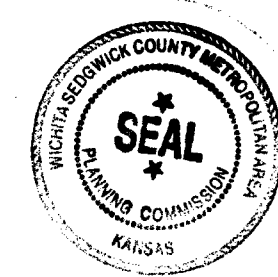
This plat of "RIDGE PORT NORTH 6TH ADDITION", Wichita, Sedgwick County, Kansas has been submitted to and approved by the Wichita-Sedgwick County Metropolitan Area Planning Commission, Wichita, Kansas.

Dated this 27th day of December, 2009.

Wichita-Sedgwick County Metropolitan Area Planning Commission

G. Nelson Van Fleet, Chairman
G. Nelson Van Fleet

John Schlegel, Secretary
John Schlegel



Michael G. Conroy, Surveyor
Michael G. Conroy

Know all men by these presents that we, the undersigned owners, have caused the land in the surveyors certificate to be platted into Lots, a Block, and Reserves, to be known as "RIDGE PORT NORTH 6TH ADDITION", Wichita, Sedgwick County, Kansas. The utility easements are hereby granted as indicated for the construction and maintenance of all public utilities. The drainage and utility easements are hereby granted as indicated for drainage purposes and for the construction and maintenance of all public utilities. The water line easement is hereby granted as indicated for the construction and maintenance of public water line systems and related appurtenances. The well easements are hereby granted as indicated for the construction and maintenance of private screening walls and utility main lines and service lines shall be allowed to cross these easements. Reserves "A" and "B" are hereby reserved for open space, landscaping, drainage purposes, lakes, berms, gazebos, signage, entry monuments, screening walls, sidewalks, and utilities as confined to easements. Reserve "C" is hereby reserved for private drives, access purposes, signage, entry monuments, open space, landscaping, drainage purposes, sidewalks, parking, and utilities as confined to easements. Reserve "C" shall provide access to or from Lots 1 through 8, inclusive, Block A, Reserves "A", "B", and "C" shall be owned and maintained by the lot owners association for the addition. Access controls shall be as depicted on the face of the plat and are hereby granted to the City of Wichita, Kansas. The permitted opening locations shall be as determined by the City Engineer of the City of Wichita, Kansas. The Minimum Building Pad Elevation for the lowest opening to the structures shall be as indicated on the face of the plat.

This plat approved and all dedications shown hereon accepted by the City Council of the City of Wichita, Kansas, this 22nd day of March, 2010.

Carl Brewer, Mayor
Carl Brewer

Karen Sublett, City Clerk
Karen Sublett

Entered on transfer record this 8th day of March, 2010.

Kelly B. Arnold, County Clerk
Kelly B. Arnold



Reviewed in accordance with K.S.A. 58-2005 on this 17th day of March, 2010.



Tricia L. Robello, L.S. #1246
Deputy County Surveyor
Sedgwick County, Kansas

Via Christi Property Services, Inc., a Kansas not-for-profit corporation

R. Allan Allford, President
R. Allan Allford

Cornerstone Assisted Living, Inc., a Kansas not-for-profit corporation

Jerry Carley, President and CEO
Jerry Carley

Catholic Diocese of Wichita, a Kansas not-for-profit corporation

Michael O. Jackels, President
Michael O. Jackels

State of Kansas) SS The foregoing instrument acknowledged before me, this 27th day of December, 2009, by R. Allan Allford, President of Via Christi Property Services, Inc., a Kansas not-for-profit corporation, on behalf of the corporation.

Janis Marean, Notary Public
JANIS MAREAN

State of Kansas) SS This is to certify that this plat has been filed for record in the office of the Register of Deeds, this 27th day of March, 2010, at 10:00 o'clock P.M. and is duly recorded.

Bill Meek, Register of Deeds
Bill Meek

Tonya Buckingham, Deputy
TONYA BUCKINGHAM

Date Recorded: 3/8/2010 12:30:22 PM

State of Kansas) SS The foregoing instrument acknowledged before me, this 8th day of February, 2010, by Jerry Carley, President and CEO of Cornerstone Assisted Living, Inc., a Kansas not-for-profit corporation, on behalf of the corporation.

Katrina M. Buss, Notary Public
KATRINA M. BUSS

State of Kansas) SS The foregoing instrument acknowledged before me, this 27th day of February, 2010, by Michael O. Jackels, President of Catholic Diocese of Wichita, a Kansas not-for-profit corporation, on behalf of the corporation.

Claudia H. Wald, Notary Public
CLAUDIA H. WALD

My App't. Exp. 11-28-10

State of Kansas) SS The foregoing instrument acknowledged before me, this 8th day of February, 2010, by Jerry Carley, President and CEO of Cornerstone Assisted Living, Inc., a Kansas not-for-profit corporation, on behalf of the corporation.

Katrina M. Buss, Notary Public
KATRINA M. BUSS

My App't. Exp. 3/8/2012

My App't. Exp. 11/28/13

Baughman Company, P.A.
315 Ellis St., Wichita, KS 67211 F 316-262-2771 F 316-262-0149

Baughman ENGINEERING | SURVEYING | PLANNING | LANDSCAPE ARCHITECTURE

NOTE:
A drainage plan has been developed for this subdivision and is on file with the City of Wichita, Kansas. Drainage intent shall remain as depicted or as modified with the approval of the City Engineer of the City of Wichita, Kansas. No obstructions which impede the flow of this drainage plan shall be allowed.

NOTE:
EXISTING GRANT OF ACCESS EASEMENT, (FILM 2323, PAGE 43), IN THE PROCESS OF BEING RELEASED THIS 4TH DAY OF FEBRUARY, 2010.